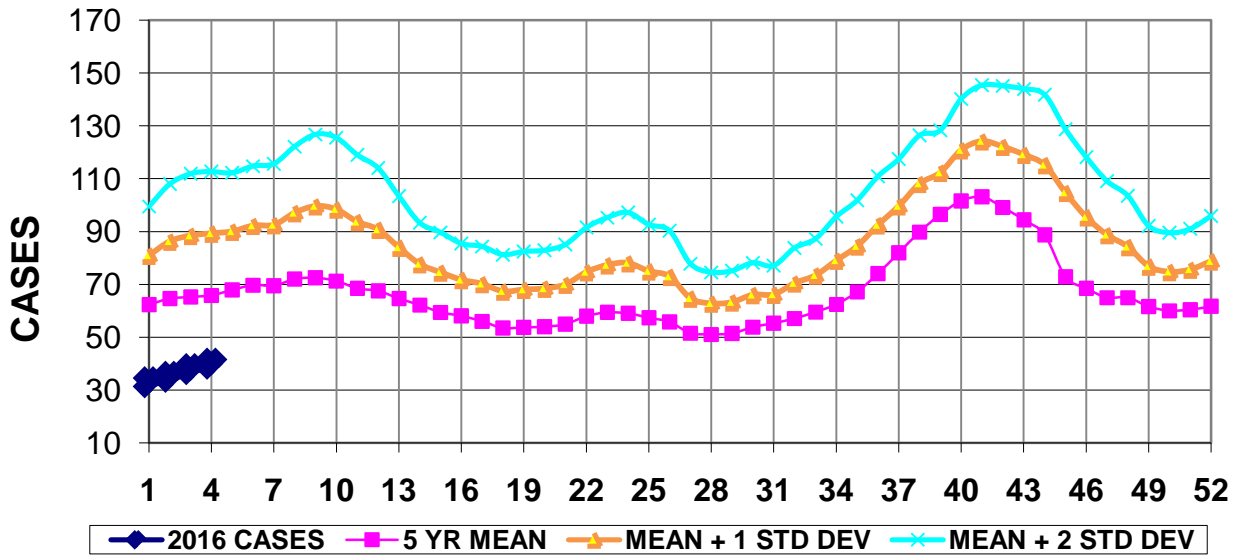


INFECTION CONTROL DEPARTMENT
 GUAM MEMORIAL HOSPITAL AUTHORITY
GUAM EPIDEMIOLOGY NEWSLETTER

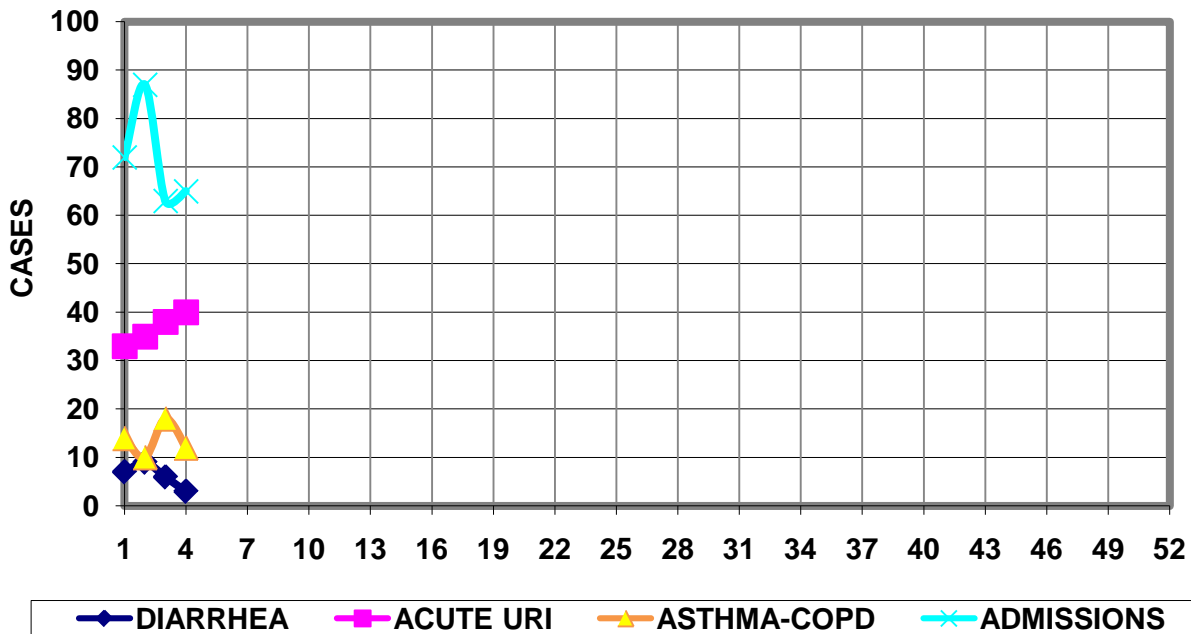
REPORT FOR WEEK ENDING: 1/30/2016 (Reporting week 2016-4)

GUAM REPORTS

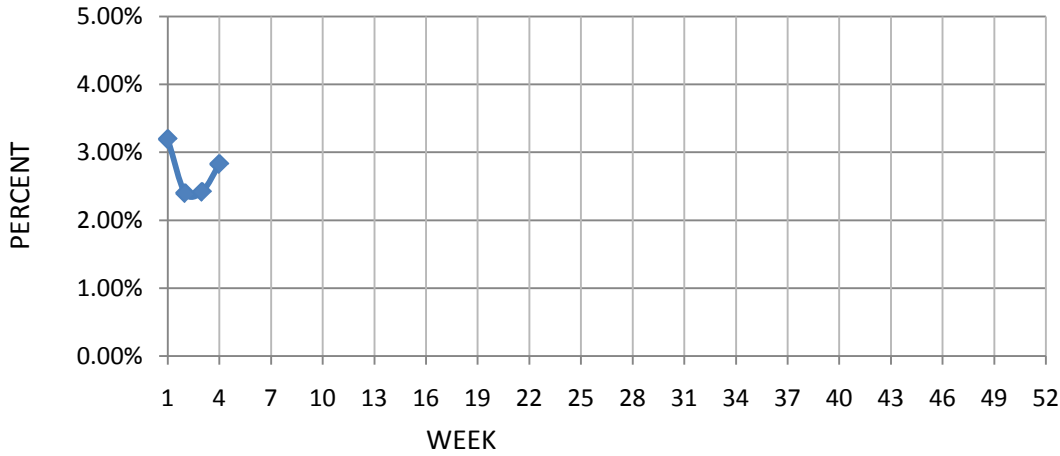
**GUAM ACUTE RESPIRATORY INFECTION SURVEILLANCE 2016;
 GMHA-EMERGENCY DEPARTMENT PATIENTS BY WEEK SEEN**



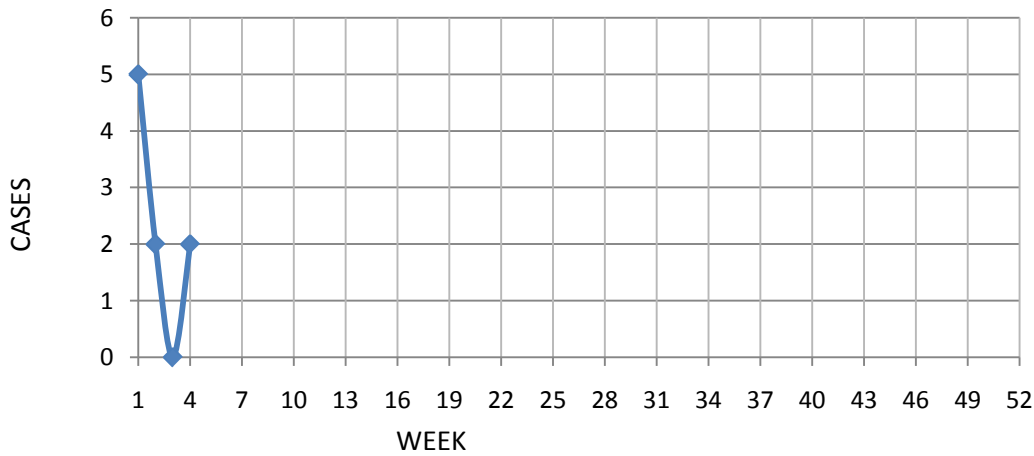
**GUAM SYNDROMIC DISEASE SURVEILLANCE
 GMHA-ED PATIENT DIAGNOSES BY WEEK, 2016**



PERCENT OF TOTAL PATIENTS SEEN IN THE GMHA-ER WITH A DIAGNOSIS OF FLU/ILI (3-WEEK SMOOTHED)



NUMBER OF CASES OF INFLUENZA AND ILI REPORTED BY SENTINEL PHYSICIANS BY WEEK REPORTED, 2016



GUAM SENTINEL PHYSICIAN INFLUENZA SURVEILLANCE

REPORTS OF INFLUENZA OR INFLUENZA-LIKE ILLNESSES
RECEIVED FOR THE WEEK ENDING 1/30/16

Two cases reported by sentinel physicians

Bureau of Communicable Disease Control

Guam Department of Public Health & Social Services

H1N1 INFLUENZA SURVEILLANCE, WEEK 4

NO CASES OF H1N1 REPORTED FOR 2016 WEEK 4

Cumulative 2016: 0 civilian & 0 military cases

INFECTION CONTROL DEPARTMENT GUAM
MEMORIAL HOSPITAL AUTHORITY

HOSPITALIZATIONS FOR INFLUENZA A BY AGE AND MORBIDITY REPORTING WEEK, 2016

AGE	1	2	3	4	5	6	7	8	9	10	TOTAL
0-4											
5-18											
19-24											
25-49											
50-64											
65+											
TOTAL	0	0	0	0							0

Bureau of Communicable Disease Control
Guam Department of Public Health & Social Services
ISLAND-WIDE COMMUNICABLE DISEASE REPORT

REPORTS RECEIVED DURING THE WEEK ENDING 1/30/2016

<i>Acinetobacter baumannii</i> MDR	1
<i>Chlamydia trachomatis</i>	37
<i>Clostridium difficile</i>	1
Conjunctivitis	9
<i>E. coli</i> MDR, ESBL+	3
<i>Gardnerella vaginalis</i>	1
Gonorrhea	8
HPV	7
Hepatitis B	1
<i>Klebsiella pneumoniae</i> MDR, ESBL+	2
MRSA	22
RSV	1
Scabies	7
Streptococcal sore throat	7
Streptococcal disease other than sore throat	2
Tuberculosis	1
VRE	2

INFECTION CONTROL DEPARTMENT
 GUAM MEMORIAL HOSPITAL AUTHORITY
**GMHA-EMERGENCY DEPARTMENT CLINICAL DIAGNOSES OF INFLUENZA OR
 FLU-SYNDROME BY WEEK AND PATIENT'S VILLAGE OF RESIDENCE, 2015**
 (Villages listed geographically from northern-most to southern-most)

VILLAGE	WEEK										TOTAL	2016RATE
	1	2	3	4	5	6	7	8	9	10		
Yigo	0	1	0	2							3	14.30
Dededo	1	4	3	3							11	23.97
Tamuning	0	0	0	1							1	4.97
Barrigada	0	2	0	0							2	22.07
Mangilao	0	1	1	1							3	19.34
Mongmong-T-M	1	0	1	1							3	43.04
Hagatña	0	0	0	0							0	0
Agaña Heights	0	0	0	1							1	25.71
Sinajana	1	0	0	0							1	37.78
Chalan Pago-Ordot	0	0	0	0							0	0
Asan-Maina	0	0	0	0							0	0
Piti	0	0	0	0							0	0
Santa Rita	1	0	0	0							1	16.01
Agat	2	0	0	0							2	39.83
Yona	0	0	3	1							4	60.44
Talofof	0	0	0	0							0	0
Inarajan	1	0	0	0							1	43.08
Merizo	0	0	0	0							0	0
Umatac	0	0	0	0							0	0
Tourist	0	1	1	1							3	0
Unknown	0	0	0	0							0	0
TOTAL	7	9	9	11							36	22.12

NOTE: Rate = cases per 100,000 population for the year to date.

GMHA-ER INFLUENZA/ILI ACTIVITY LEVEL - REGIONAL (8 villages affected)

(ACTIVITY LEVELS: No activity, Sporadic, Local, Regional, Widespread)

GMHA-ER INFLUENZA/ILI ACTIVITY BY AGE – WEEK 4

GENDER	Total	< 1	1-4	5-9	10-14	15-19	20-24	25-29	30-39	40-49	50-64	65+	UNK
MALE	5	1	2	2	0	0	0	0	0	0	0	0	0
FEMALE	6	1	4	0	0	0	0	0	0	0	0	1	0
TOTAL	11	2	6	2	0	0	0	0	0	0	0	1	0

GUAM ANIMAL DISEASE (ZONOSSES) REPORTS

Anaplasmosis – 1 canine, Babesiosis – 2 canine, Ehrlichiosis – 1 canine