



SPC
Secretariat
of the Pacific
Community

Daily Situational Report

Number:12

Enhanced Syndromic Surveillance System
Government of Samoa, Ministry of Health
National Disease Surveillance & International
Health Regulations Division, Apia, Samoa
Telephone: (685) 68157/68152/68156
Website: <http://www.health.gov.ws>



Date of report: 17th September for cases presenting on: 16th September

Summary

Key findings

- 44 syndrome cases reported from 4 sites data was collected from
- 31 Influenza-like-illness cases (10.3% of encounters)
- 10 Dengue-like-illness cases (3.3 % of encounters)
- 4 Diarrhoea cases (1.3% of encounters)
- 1 Acute Fever and Rash

Conclusion and recommendations

- **Dengue-like-illness is ongoing** in the local population.

Coverage: 4 points of care are included in the enhanced syndromic surveillance system. For the date indicated above, 4 points of care submitted reports. All 4 sites reported syndrome cases.

Overview analysis:

Point of care	Number of cases observed for the date above											
	AFR	Acute fever and neurological symptoms	Acute flaccid paralysis	Dengue-like illness	Diarrhoea	Fever and jaundice	Food-borne disease outbreak	ILI	Neonatal tetanus	Prolonged Fever	Total Syndromes [#]	Total Encounters [*]
Dr Esmay	0	0	0	1	0	0	0	5	0	0	5	20
Dr Tanya	0	0	0	3	3	0	0	8	0	0	13	38
TTMH GOPD	1	0	0	4	1	0	0	13	0	0	19	176
TTMH Paediatrics	0	0	0	2	0	0	0	5	0	0	7	68
TOTAL	1	0	0	10	4	0	0	31	0	0	44	302
Daily Country Threshold	2	1	1	1	3	1	2		1	10		

If a cell is coloured red, the value is equal to or has exceeded the threshold.

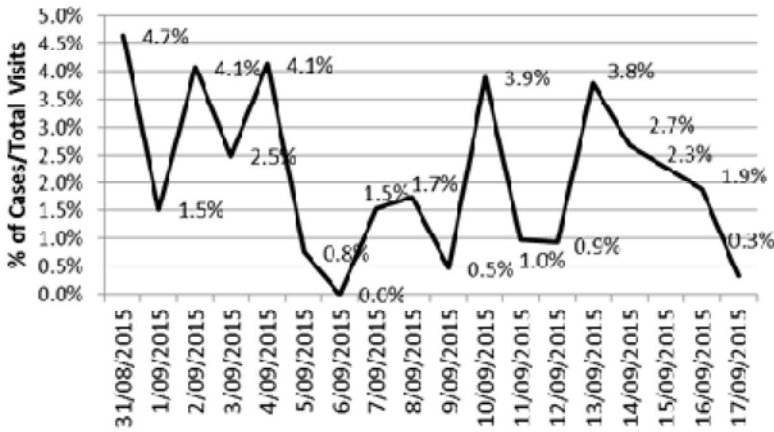
*Encounter cases represent all acute care cases visiting a hospital/clinic regardless of whether they have one or more of the 10 syndromes e.g., a sprained ankle would be included in the 'encounter case' count

[#]Syndrome cases represent all acute care cases visiting a hospital/clinic who have one or more of the 10 syndromes e.g., a sprained ankle would NOT be included in the 'syndrome case' count

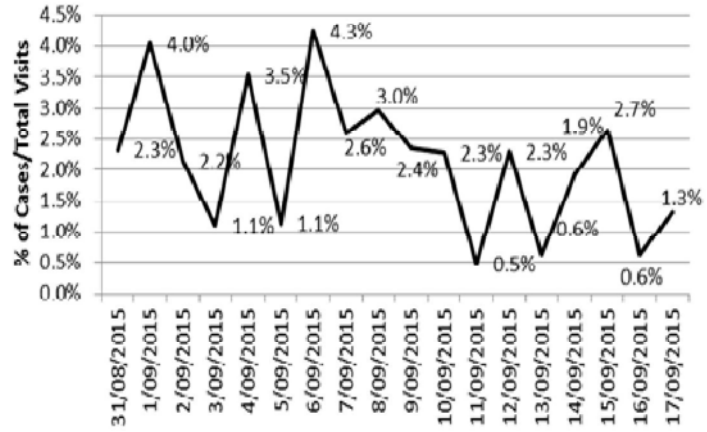
Note, the archive of daily reports can be found at: http://www.pphsn.net/Surveillance/Mass_gathering.htm

Epicurve of daily % of syndromes to total visits, by syndrome (31/08/2015 to 17/09/2015) All Clinics

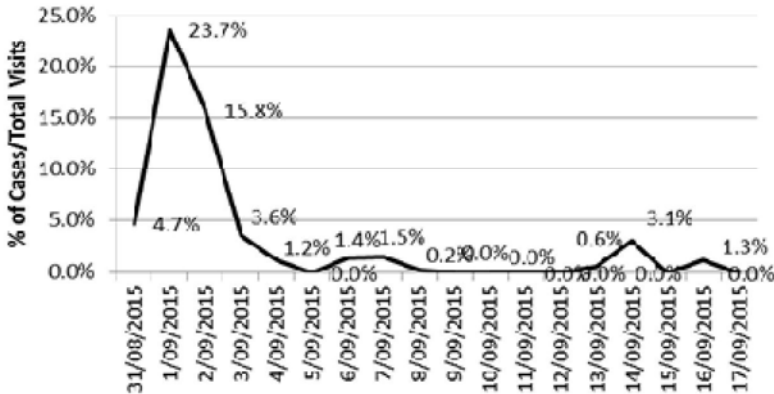
Acute Fever & Rash



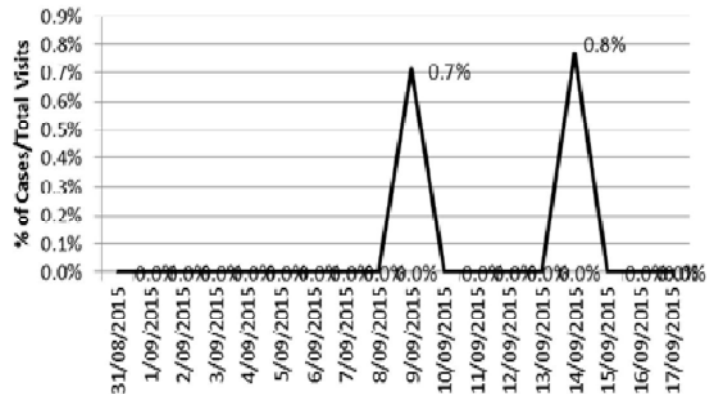
Diarrhoea



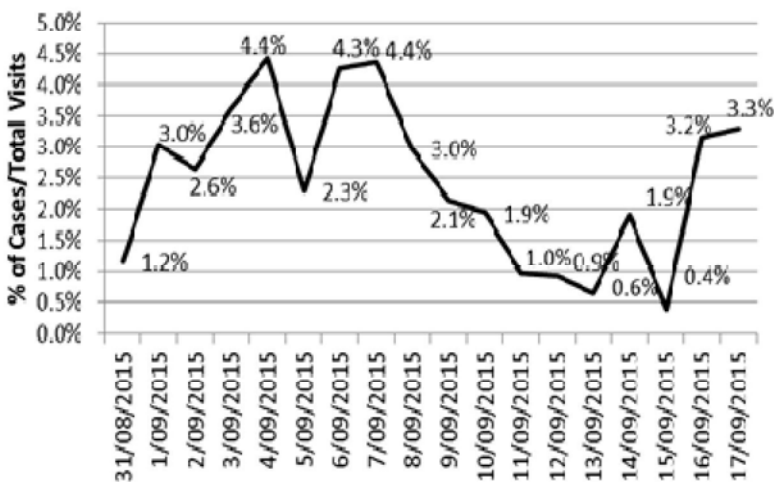
Prolonged Fever



Food-borne disease outbreak



Dengue-like illness



Influenza-like illness

