

Pacific Syndromic Surveillance -- weekly report

Year: 2011

Week: 47

ending on 27 November 2011

Country / Area	Last update received	Sites reporting	Acute fever and rash <small>Sudden onset of fever with acute nonblistering rash</small>	Diarrhoea <small>3 or more loose or watery stools in 24 hrs</small>	Influenza-like illness <small>Sudden onset of fever, plus: cough and/or sore</small>	Prolonged fever <small>Any fever lasting 3 days or longer</small>
American Samoa	29 Nov 2011	3	0	<u>26</u>	54	1
Cook Islands	29 Nov 2011	12	0	7	0	0
Federated States of Micronesia	30 Nov 2011	4	1	16	25	2
Fiji	30 Nov 2011	7	13	173	596	24
French Polynesia	30 Nov 2011	15		45	21	1
Guam	29 Nov 2011	1		1	1	
Kiribati	30 Nov 2011	2	1	54	105	17
Marshall Islands	1 Dec 2011	2	<u>16</u>	16	<u>56</u>	<u>95</u>
Nauru	1 Dec 2011	1	0	13	0	0
New Caledonia	30 Nov 2011	8		2	0	27
New Zealand	30 Nov 2011	21			34	
Niue	29 Nov 2011	1	<u>1</u>	<u>6</u>	16	1
Northern Mariana Islands	30 Nov 2011	2	0	6	25	1
Palau	29 Nov 2011	1	0	<u>25</u>	<u>34</u>	2
Papua New Guinea	30 Nov 2011	1	0	0	0	0
Pitcairn Islands	1 Dec 2011	0	0	0	0	
Samoa	30 Nov 2011	2	1	13	87	0
Solomon Islands	30 Nov 2011	4	<u>6</u>	27	44	13
Tokelau	29 Nov 2011	1	0	6	10	0
Tonga	30 Nov 2011	1	0	20	30	0
Tuvalu	1 Dec 2011	1	0	0	7	0
Vanuatu						
Wallis & Futuna	27 Nov 2011	1	0	6	8	0

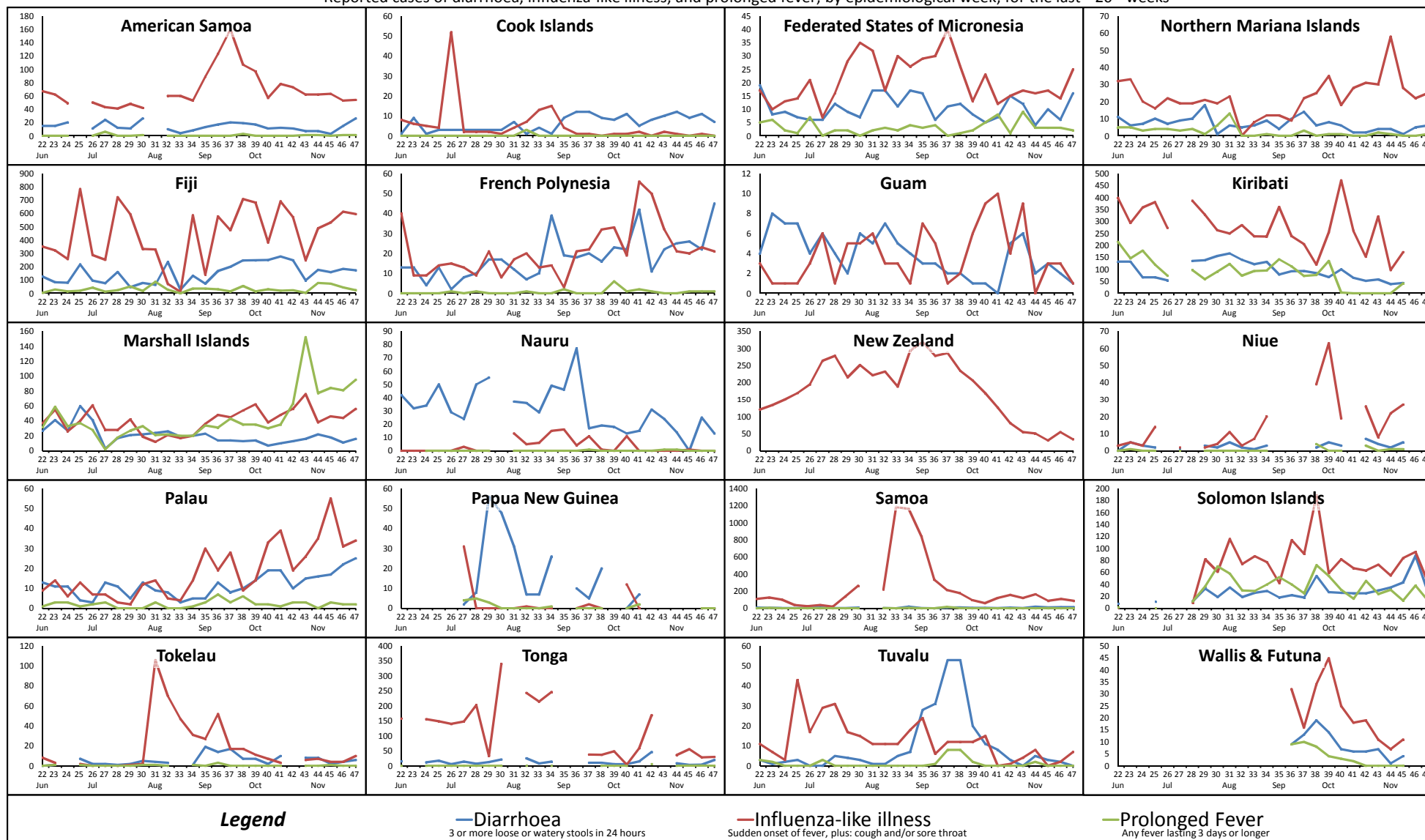
Countries are asked to email their weekly reports to surveillance.sp@wpro.who.int

A red underlined entry indicates that the number of cases is above the threshold of 90% of historical values.

Pacific Syndromic Surveillance System

2011 week 47 ending 27 November 2011

Reported cases of diarrhoea, influenza-like illness, and prolonged fever; by epidemiological week; for the last 26 weeks



Note: Numbers of reported cases are not comparable between countries. The purpose of the charts is to show trends over time within each country/area.