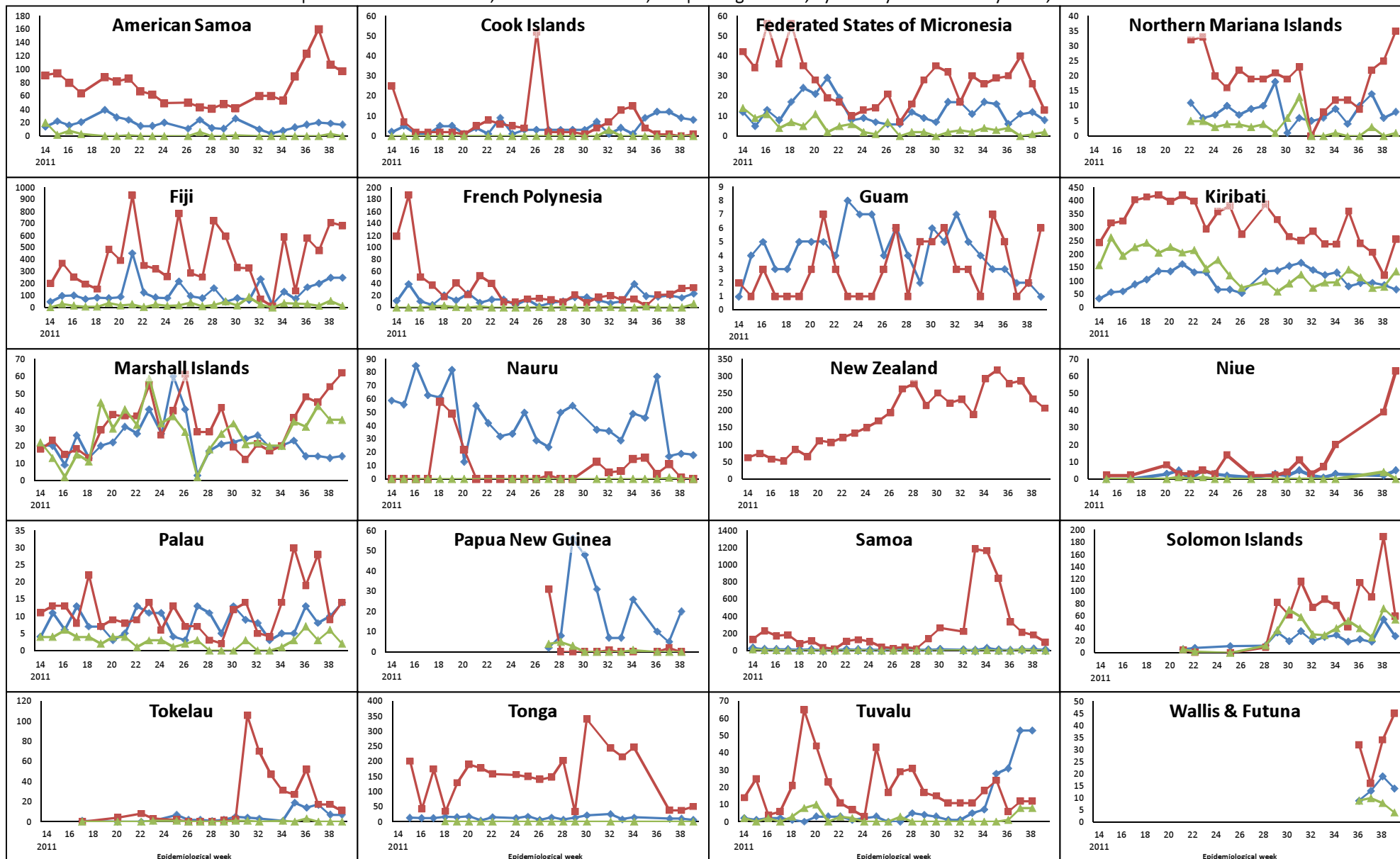


Pacific Syndromic Surveillance System

2011 week 39 ending 2 October 2011

Trends of reported cases of diarrhoea, influenza-like illness, and prolonged fever; by country or area and by week; for the last 26 weeks



Legend

◆ Diarrhoea

3 or more loose or watery stools in 24 hours

■ Influenza-like illness

Sudden onset of fever, plus: cough and/or sore throat

▲ Prolonged Fever

Any fever lasting 3 days or longer

Note: Numbers of reported cases are not comparable between countries. The purpose of the charts is to show trends over time within each country/area.