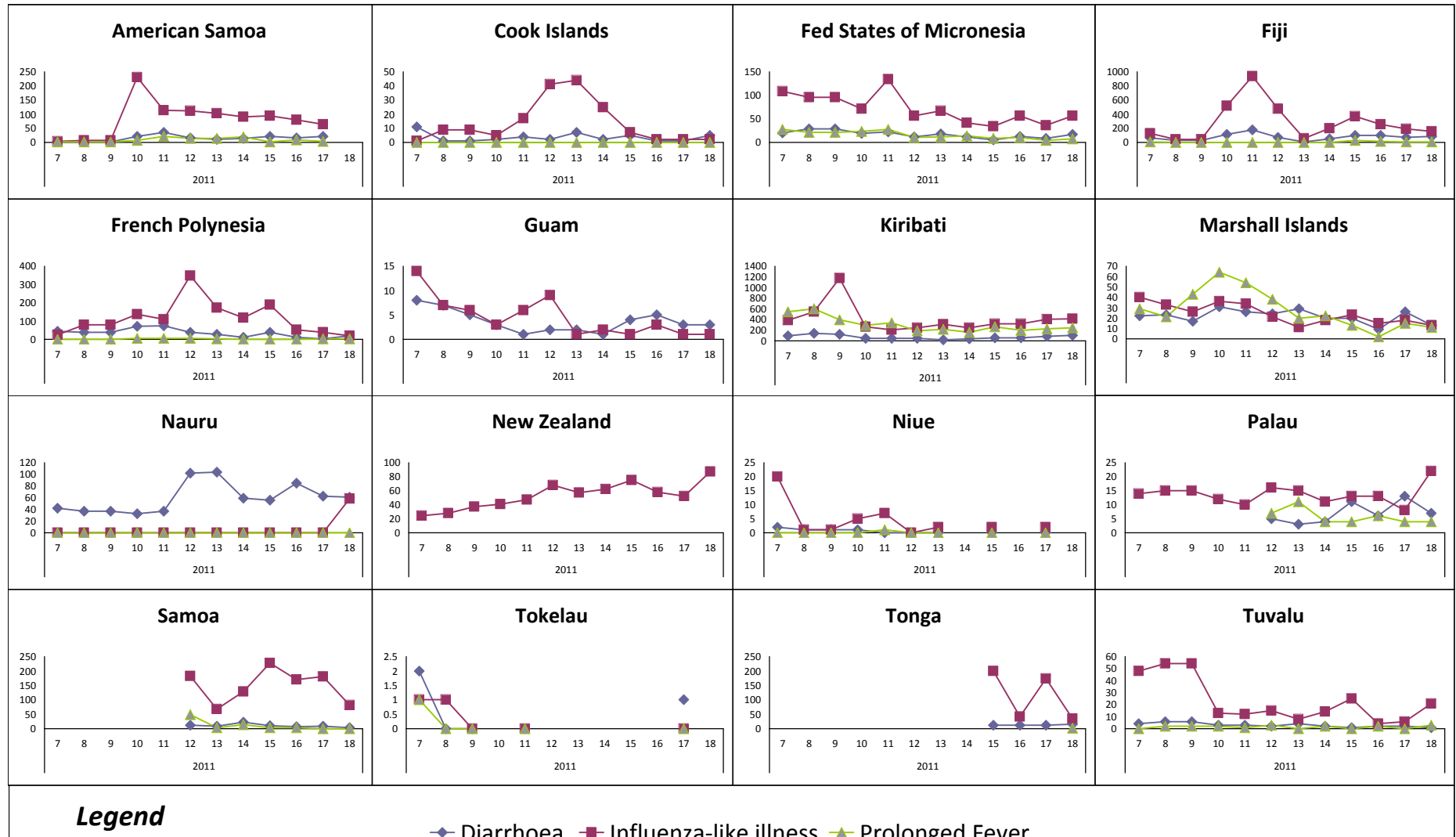


Pacific Syndromic Surveillance System

Week 18 ending 8 May 2011

Weekly trends of reported cases of diarrhoea, influenza-like illness, and prolonged fever; by country or area and by week; for the last 12 weeks



Note: Numbers of reported cases are not comparable between countries because of differences in the number of reporting sites and the size of the population covered. The purpose of the charts is to show trends over time.