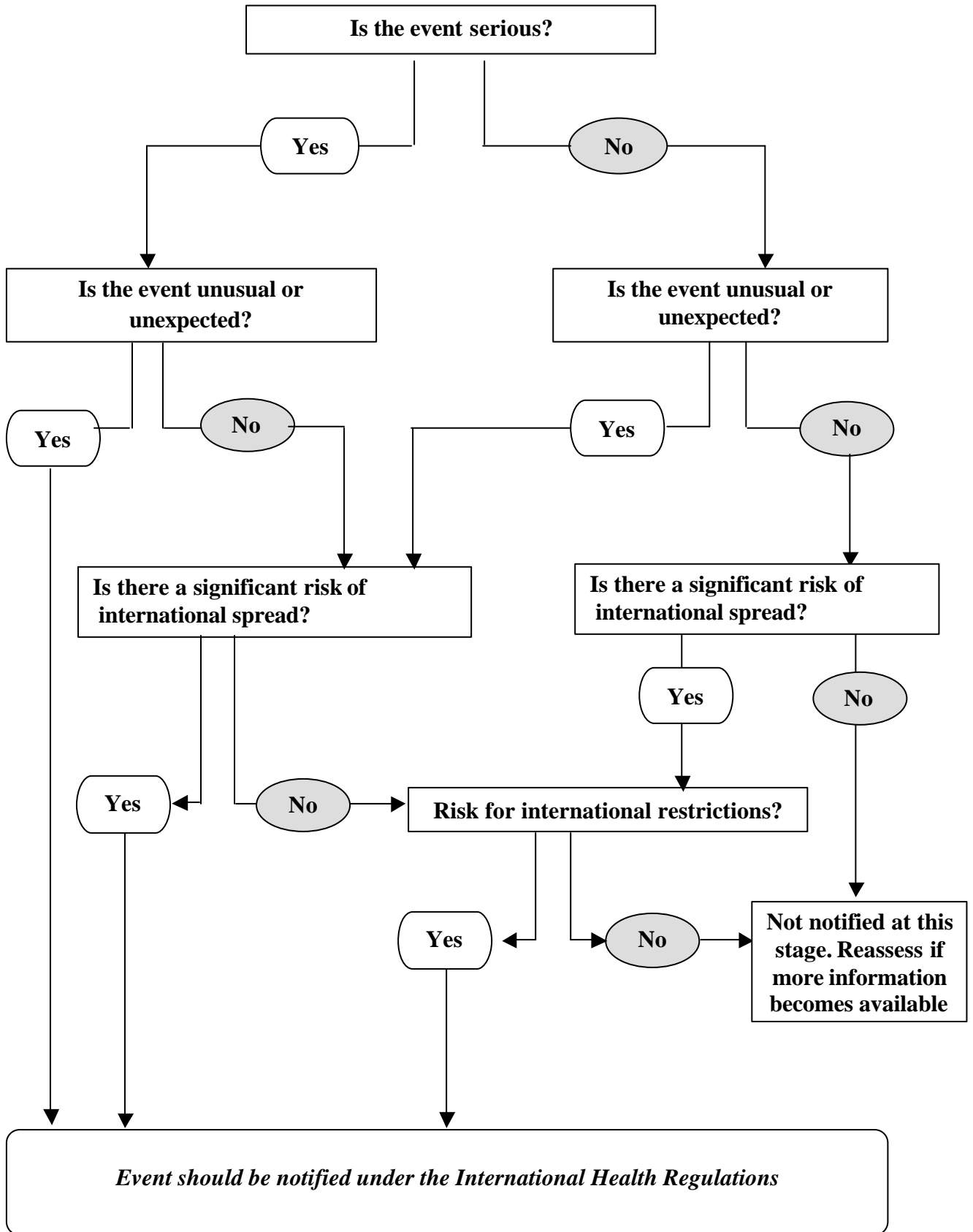


PROPOSED DRAFT DECISION INSTRUMENT FOR ASSESSMENT OF PUBLIC HEALTH EMERGENCIES



<b>Indicators for ‘Public Health Impact’</b>		<b>Yes</b>	<b>No</b>
<b>Is the event serious? – Public Health Impact</b>	<b>1.</b> Is the number of cases and/or number of deaths unusually large or unexpected for the given place and time?		
	<b>2.</b> Has the event the potential for a high impact? <i>Please, before answering, consider whether</i> <ul style="list-style-type: none"> <li>○ <i>The population at risk is especially vulnerable, (refugees, low level of immunization, undernourished, etc)</i></li> <li>○ <i>Cases reported amongst health staff</i></li> <li>○ <i>Concomitant factors that may hinder or delay the response (natural catastrophes, armed conflicts, unfavourable weather conditions, multiple foci in the country)</i></li> <li>○ <i>Event in an area with high population density</i></li> <li>○ <i>Disease highly contagious (infectiousness of the agent, transmission routes, possibility of preventing spread with vaccine, drugs or other means)</i></li> <li>○ <i>The event represents significant public health risk even if no human cases have yet been identified</i></li> </ul>		
	<b>3.</b> Is external assistance needed to detect, investigate, and control the current event, or prevent new cases? <i>Please, before answering, consider whether there are</i> <ul style="list-style-type: none"> <li>○ <i>Inadequate human, financial, material or technical resources</i></li> <li>○ <i>Insufficient laboratory capacity to investigate the event (equipment, personnel, financial resources)</i></li> <li>○ <i>Surveillance system in place inadequate to detect new cases</i></li> <li>○ <i>If applicable, insufficient drugs and/or vaccine and/or protective equipment to cover estimated needs</i></li> </ul>		
	<b>IS THE EVENT SERIOUS ?</b> <b>If you answer ‘Yes’ to <u>any</u> of 1, 2 or 3 above then the answer is ‘Yes’.</b>		

<b>Indicators for ‘unusual or unexpected’</b>		<b>Yes</b>	<b>No</b>
<b>Is the event unusual or unexpected?</b>	<b>4.</b> Is the cause of the event unknown? ( <i>Source or vehicle or route of transmission or pathogen</i> )		
	<b>5.</b> If the cause of the event is known, are there any unusual characteristics? <i>Please, before answering, consider whether</i> <ul style="list-style-type: none"> <li>○ <i>Evolution of cases more severe than expected (including case-fatality rates), or with unusual symptoms</i></li> <li>○ <i>Indication of treatment failure (antibiotic resistance, new strains, vaccine failure)</i></li> <li>○ <i>Occurrence of the disease unusual for the area or season</i></li> <li>○ <i>Event caused by a disease/agent that had already been eliminated or eradicated from the country or not previously reported</i></li> </ul>		
	<b>6.</b> Is the event known or suspected to be the result of an intentional or accidental release of chemical, radiological or biological agent?		
	<b>IS THE EVENT UNUSUAL OR UNEXPECTED?</b> <b>If you answer ‘Yes’ to <u>any</u> of 4, 5 or 6 above then the answer is ‘Yes’.</b>		

<b>Indicators for International spread</b>		<b>Yes</b>	<b>No</b>
<b>Is there a significant risk for International spread?</b>	7. Have similar cases been detected in other country/ies where such cases were unexpected?		
	8. Is there any factor that should alert us to the potential for cross border movement of the agent, vehicle or host?  <i>Please, before answering, consider whether</i> <ul style="list-style-type: none"> <li>○ <i>Event caused by a pathogen with high potential to cause epidemic (infectiousness, healthy carrier, long incubation period, route of transmission, etc.)</i></li> <li>○ <i>The source is suspected or known to be a food product or any other goods that have been imported/exported</i></li> <li>○ <i>Index case, (or other linked cases) with history of international travel within the previous month (or time equivalent to the incubation period if the pathogen is known) or history of participation in an international gathering (pilgrim, sport event, conferences, etc),</i></li> <li>○ <i>Event in an area with international tourism/gathering</i></li> <li>○ <i>Event in a border area with intense traffic of persons/goods</i></li> <li>○ <i>Event in a border area with limited capacity for sanitary control (For this question consider the agent, the vehicle and the host)</i></li> </ul>		
	<b>IS THERE A SIGNIFICANT RISK OF INTERNATIONAL SPREAD?</b> <b>If you answer 'yes' to either 7 or 8 above then the answer is 'yes'.</b>		

<b>Indicators for International restrictions</b>		<b>Yes</b>	<b>No</b>
<b>International travel or trade restrictions ?</b>	9. Have similar events in the past resulted in international restriction on trade and or travel against the affected country?		
	10. Is the source suspected or known to be a food product or any other goods that have been exported/imported to/from other countries?		
	11. Has the event occurred in an area with international tourism?		
	12. Has the event attracted a high degree of international media attention?		
	<b>IS THERE A SIGNIFICANT RISK FOR INTERNATIONAL TRADE OR TRAVEL RESTRICTIONS?</b> <b>If you answer 'Yes' to any of 9, 10, 11 or 12 above then the answer is 'Yes'.</b>		