

Date of report: **08/06/2014 (Wednesday)** for cases presenting on: **08/05/2014 (Tuesday)**

**Summary**

**Key findings**

- 9 (90%) sites reported for Tuesday 5<sup>th</sup> August. This represents 90% of all active sentinel surveillance sites since the end of the Games (10 sites)
- Of the 9 reporting sentinel sites, 3 (30%) reported syndrome cases.
- 24 (10%) of the total 248 encounters were reported as syndrome cases.
- 3 (37.5%) of the 8 syndromes were reported.
- 2 (25%) of the 8 syndromes reached their threshold:
  - 2 cases Watery Diarrhea, one female aged 10 and the other male aged 47. All residents of Pohnpei State.
  - 21 cases ILI, median age 4y, range 1 month to 60y, 10 female and 11 male. All residents of Pohnpei State.
- No additional unusual occurrence reported from the sentinel sites.

**Conclusion and recommendations**

- Watery Diarrhea and ILI syndromes have reached their daily threshold. As games have finished response is on a case by case basis.
- While lower than yesterday (9 cases) watery diarrhea cases are still occurring and should be closely monitored over successive days. The 2 cases today come from the same POC (Pohnpei CHC).

**Current outbreaks or public health incidents of importance to the games that are occurring in the region and globally**

- There are currently measles outbreaks in Kosrae and Pohnpei States, FSM. Please refer to PacNet posting on 25 July 2014 for an update of the outbreak in Pohnpei. A rapid mass vaccination programme was implemented that covered 96% of the population under 49 years
- Additionally it is confirmed at least one Measles case in Chuuk State. Introduction from Pohnpei by a person visiting relatives – now returned. Investigation into the both the Pohnpei and Chuuk cases commencing
- Guam - a laboratory confirmed case of measles has been detected in a 10-month-old child, who has been epidemiologically linked to visitors from Pohnpei, FSM. The case has no travel history.
- Nauru - dengue serotype-3 has been confirmed (RT-PCR) in 11 out of 26 samples sent to Institut Louis Malarde, French Polynesia. The dengue negative samples tested negative for zika virus and chikungunya. There were no new cases reported in Epi week 29.
- American Samoa – an outbreak of Chikungunya has been confirmed – so far more than 350 probable cases.

**Coverage:** 11 points of care (POC) are included in the enhanced syndromic surveillance system. **\*However please note:** One games-specific POC has closed following the end of the games. For the date indicated above, 9 POC (surveillance sentinel sites) submitted reports. One site did not complete syndromic data collection forms.

**Overview analysis**

Number of cases observed for the date above										
Point of care	Number Encounter cases*	Number Syndrome cases#	Acute fever and rash	Watery diarrhea	Non-watery diarrhea	Influenza-like illness	Prolonged fever	Fever and jaundice	Heat related illness	Food-borne disease syndrome
Berysin CHC	3	0	0	0	0	0	0	0	0	0
COM Dispensary	8	0	0	0	0	0	0	0	0	0
Genesis Hospital	70	3	0	0	1	2	0	0	0	0
Lukop Dispensary	5	0	0	0	0	0	0	0	0	0
Medpharm HC	12	0	0	0	0	0	0	0	0	0
PICS High School	Not operating	Not operating	Not operating	Not operating	Not operating	Not operating	Not operating	Not operating	Not operating	Not operating
Pohnlangas Dispensary	38	0	0	0	0	0	0	0	0	0
Pohnpei CHC	86	21	0	2	0	19	0	0	0	0
Pohnpei State Hospital	Did not report	Did not report	Did not report	Did not report	Did not report	Did not report	Did not report	Did not report	Did not report	Did not report
Sokehs Dispensary	2	0	0	0	0	0	0	0	0	0
Wone Dispensary	24	0	0	0	0	0	0	0	0	0
<b>TOTAL</b>	<b>248</b>	<b>24</b>	<b>0</b>	<b>2</b>	<b>1</b>	<b>21</b>	<b>0</b>	<b>0</b>	<b>0</b>	<b>0</b>
<b>DAILY STATE THRESHOLD</b>	<b>N/a</b>	<b>N/a</b>	<b>1</b>	<b>1</b>	<b>3</b>	<b>4</b>	<b>1</b>	<b>1</b>	<b>2</b>	<b>2</b>
<b>Legend/key:</b>	Red shading indicates an increase compared to the previous day's report		Green shading indicates a decrease compared to the previous day's report		Grey shading indicates POC closed on report or data collection day		A cell shaded in white indicates no change compared to the previous day's report			
<b>Interpretation:</b>	Reports were collected from 9 sites for Tuesday 5 <sup>th</sup> . 3 (30%) of the post games 10 sentinel sites reported syndromes (originally 11 – one has now closed) Watery Diarrhea and ILI have reached their daily state-wide thresholds									

\*Encounter cases represent all acute care cases visiting a clinic regardless of whether they have one or more of the eight syndromes e.g., a sprained ankle would be included in the 'encounter case' count  
 #Syndrome cases represent all acute care cases visiting a clinic who have one or more of the eight syndromes e.g., a sprained ankle would NOT be included in the 'syndrome case' count

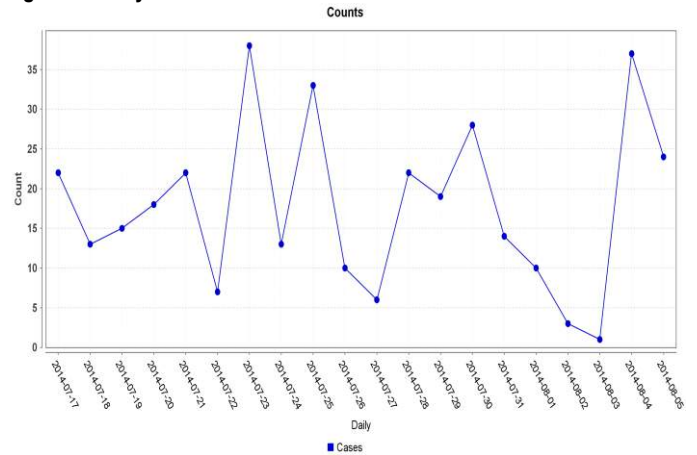
EpiCurves of the number of cases by visit date for Tuesday August 5<sup>th</sup>

Figure 1: All encounter cases

[EpiCurve not available]

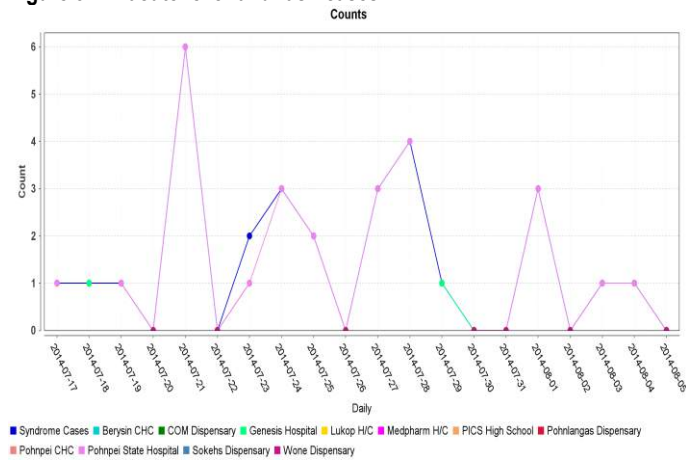
**Interpretation:** 9 of 10 sites reporting. A decrease from 457 to 248 encounter cases in previous day.

Figure 2: All syndrome cases



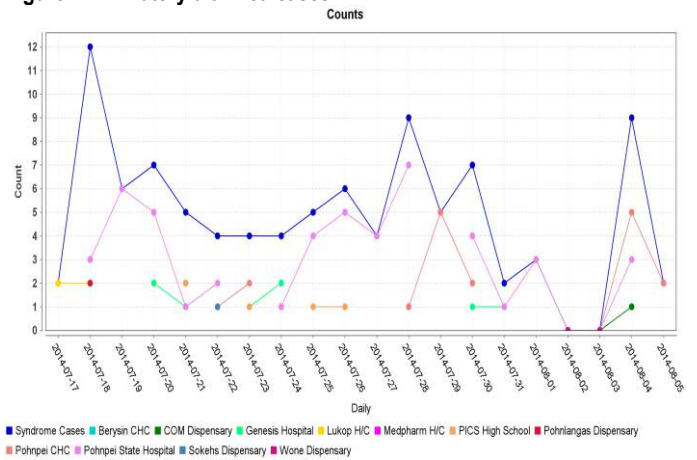
**Interpretation:** 9 of 10 sites reporting. A decrease from 40 to 24 syndrome cases. Of which 21 at Pohnpei CHC.

Figure 3: All acute fever and rash cases



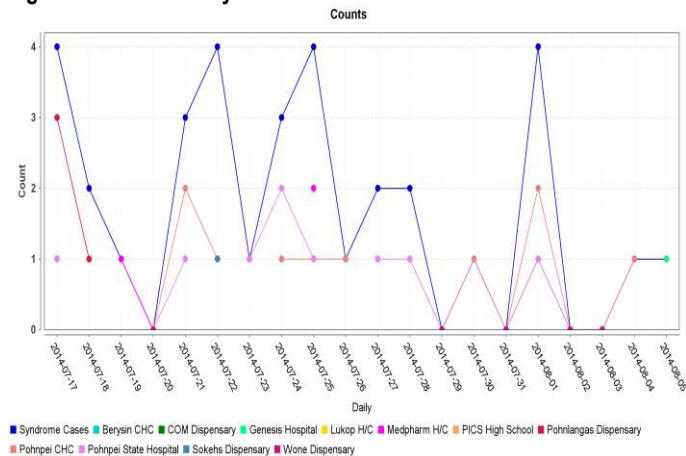
**Interpretation:** A decrease from 1 case to zero cases.

Figure 4: All watery diarrhea cases



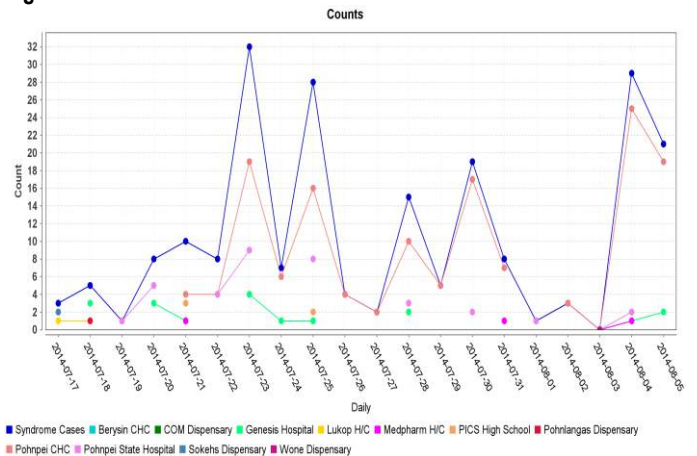
**Interpretation:** A decrease from 9 to 2 cases.

Figure 5: All non-watery diarrhea cases



**Interpretation:** An increase from zero to 1 case in the past 2 days. No increase from previous day.

Figure 6: All influenza-like illness cases



**Interpretation:** A decrease from 29 to 24 cases (of which 21 at Pohnpei CHC). Case counts remain high

<p><b>Figure 7: All prolonged fever cases</b></p> <p><b>Interpretation:</b> No increase from previous day, still zero cases.</p>	<p><b>Figure 8: All fever and jaundice cases</b></p> <p>[Only one case (25 July) since commencing Games]</p> <p><b>Interpretation:</b></p>
<p><b>Figure 9: All heat-related illness cases</b></p> <p>[Only two cases (July 23 and July 28) since commencing Games]</p> <p><b>Interpretation:</b></p>	<p><b>Figure 10: All food-borne disease outbreak cases</b></p> <p>[Zero cases since commencing Games]</p> <p><b>Interpretation:</b></p>

**Detailed analysis for ongoing investigations** - for any syndrome where the set state daily threshold is reached (or was reached in previous days) and, following confirmation of cases, it was decided to undertake an investigation

<b>Syndrome</b>	Acute fever and rash
<b>Point of care (number of cases since July 22)</b>	Pohnpei State Hospital (26 cases) and Pohnlangas Dispensary (1 case), Genesis Hospital (2 case)
<b>Dates of investigation</b>	July 23 – no tests ordered since end of games
<b>Description of investigation undertaken</b>	All cases of acute fever and rash reported from the Pohnpei State Hospital and Genesis Hospital on July 29 are still being further investigated by the public health team assigned to investigate measles. Throat swabs and serums are to be collected for further testing for measles. Specimens for measles testing will be sent to the Hawaii Public Health Laboratory for confirmation. Specimens from cases with possible vaccine reaction will be sent to CDC, Atlanta for further testing. Further testing for dengue fever, chikungunya and zika virus has been advised and specimen will be sent to Institut Louis Malardie, French Polynesia.
<b>Findings of investigation:</b>	
<ul style="list-style-type: none"> <li>Number of cases (since July 17)</li> </ul>	29 (no cases on August 5 <sup>th</sup> )
<ul style="list-style-type: none"> <li>Diagnostic methods, number of samples collected, number of samples tested, laboratory involved</li> </ul>	Throat swabs and serum are being collected from cases for measles testing.
<ul style="list-style-type: none"> <li>Prevailing epidemiological pattern: endemic or epidemic, recent epidemiological history</li> </ul>	There are currently measles outbreaks in Kosrae and Pohnpei States, FSM. Please refer to PacNet posting on 25 July 2014 for an update of the outbreak in Pohnpei state. There is a confirmed measles outbreak in the Solomon Islands. There are also outbreaks of dengue, zika, and chikungunya in the region.
<ul style="list-style-type: none"> <li>Time/Place/Person/clinical features</li> </ul>	
<b>Measures taken or considered:</b>	
<ul style="list-style-type: none"> <li>Public health measures (e.g. immunisation strategy, patient and contact management, vector control, water and food safety)</li> </ul>	Please refer to PacNet posting on 25 July 2014 for an update of the Pohnpei situation. MMR vaccination campaign for outer islands will commence on 6 August 2014.

<b>Syndrome</b>	Watery diarrhea
<b>Point of care (number of cases since July 17)</b>	Pohnpei State Hospital (49 cases), Genesis Hospital (10 cases), Pohnpei CHC (21 cases), PICS high school (5 cases), Lukop dispensary (4 cases), COM dispensary (1 case), Pohnlangas Dispensary (3 case), Berysin CHC (1case), Sokehs dispensary (1 case)
<b>Dates of investigation</b>	July 18 – no test ordered since end of games
<b>Description of investigation undertaken</b>	All watery diarrhea cases reported from Pohnpei State Hospital, Pohnpei CHC and

	Genesis Hospital are being further investigated by the public health response team. All stool specimens received at the Pohnpei State Hospital laboratory are being tested to rule out possible enteropathogens such as <i>Vibrio cholerae</i> , <i>Salmonella typhimurium</i> , and <i>Shigella dysenteriae</i> . Also, tests for <i>Giardia lamblia</i> and <i>Entamoeba histolytica</i> are performed. Furthermore, rapid testing for rotavirus, adenovirus, and norovirus is ongoing and results will be reported as they become available.
<b>Findings of investigation:</b>	
• Number of cases (since July 17)	96 (2 cases on August 5 <sup>th</sup> )
• Diagnostic methods, number of samples collected, number of samples tested, laboratory involved	Stool samples taken on 28/7/14 showed <i>E.histolytica</i> cyst and trophozoites on microscopy. Stool samples taken on 29/7/14 showed <i>A.lumbricoides</i> ova, <i>E.histolytica</i> cyst and trophozoite. All stool samples tested since July 18 have reported negative for rotavirus, adenovirus and norovirus.
• Time/Place/Person/clinical features	7 cases of watery diarrhea (median age: 7 y; range 2y–50 y). Five (71.4%) cases are females. All are residents of Pohnpei State.
<b>Measures taken or considered:</b>	
• Public health measures (e.g. immunisation strategy, patient and contact management, vector control, water and food safety)	A public health advisory on diarrhea was created and translated into the local language for dissemination through radio. In addition, awareness on good hygiene techniques, including hand washing, is ongoing through posters and flyers. The ICS is working closely with EPA for further environmental assessment and remedial action in response to findings of the public health investigation team.

---

<b>Syndrome</b>	Influenza like illness
<b>Point of care (number of cases since July 17)</b>	Pohnpei CHC (141 cases), Pohnpei State Hospital (35 cases), Genesis Hospital (18 cases), Pohnlangas dispensary (1 cases), Sokehs dispensary (2 cases), PICS High School (5 cases), Lukop dispensary (2 case), Medpharm HC (3 case), Berysin CHC (2 cases)
<b>Dates of investigation</b>	July 24 – no test ordered since end of games
<b>Description of investigation undertaken</b>	A line list of new cases of ILI is being collected from case investigation and will be presented in future reports. Further specimen collection is put on hold until pending results of specimens taken so far become available.
<b>Findings of investigation:</b>	
• Number of cases (since July 17)	209 (21 cases on August 5 <sup>th</sup> )
• Diagnostic methods, number of samples collected, number of samples tested, laboratory involved	All specimens collected have been shipped to the reference laboratory at the Hawaii State Laboratory on Wednesday, July 30. The rapid diagnostic test for influenza will be made available at the Pohnpei CHC laboratory.
• Time/Place/Person/Clinical Features	20 cases of ILI (median age: 6.5y; range 1y–51y). Eleven (55.0%) cases are males. All are residents of Pohnpei State.
<b>Measures taken or considered:</b>	
• Public health measures (e.g. immunisation strategy, patient and contact management, vector control, water and food safety)	Awareness on good hygiene techniques, including hand washing and cough etiquette, is ongoing through posters and flyers.

---

<b>Syndrome</b>	Prolonged Fever
<b>Point of care (number of cases since July 17)</b>	Pohnpei CHC (6 cases), Pohnpei State Hospital (6 cases), PICS High School (2 cases)
<b>Dates of investigation</b>	July 24 – no tests ordered since end of games
<b>Description of investigation undertaken</b>	Two cases of prolonged fever reported from the Pohnpei State Hospital had watery diarrhea syndrome as well and are being further investigated by the public health investigation team. A case report form to investigate dengue fever (and other arboviral infections) has been created for investigation of prolonged fever cases.
<b>Findings of investigation:</b>	
• Number of cases (since July 17)	14 (no cases on August 5 <sup>th</sup> )
• Diagnostic methods, number of samples collected, number of samples tested, laboratory involved	2 prolonged fever cases reported from Pohnpei CHC were treated for pneumonia-like illness.
• Time/Place/Person/Clinical features	2 cases of prolonged fever aged 7y and 14y. All cases are females (100.0%). All are residents of Pohnpei State.



<b>Measures taken or considered:</b>	
<ul style="list-style-type: none"> <li>Public health measures (e.g. immunisation strategy, patient and contact management, vector control, water and food safety)</li> </ul>	A public health advisory on dengue fever and leptospirosis was created and made available through posters and flyers. Travel advisory and prevention messages for dengue fever and leptospirosis are displayed on a monitor at the port of entry at the Pohnpei International Airport.

-----

<b>Syndrome</b>	Non-watery diarrhea
<b>Point of care (number of cases since July 17)</b>	Pohnpei CHC (12 cases), Pohnpei State Hospital (9 cases), Lukop Dispensary (1 case), Pohnlangas dispensary (5 cases), Medpharm (4 cases), COM dispensary (2 cases), and Sokehs Dispensary (1 cases)
<b>Dates of investigation</b>	July 24 – no tests ordered since end of games
<b>Description of investigation undertaken</b>	Case investigation form for shigella and salmonella with food recall history are used to investigate non-watery diarrhea cases.
<b>Findings of investigation:</b>	
<ul style="list-style-type: none"> <li>Number of cases (since July 17)</li> </ul>	34 (1 case on August 5 <sup>th</sup> )
<ul style="list-style-type: none"> <li>Diagnostic methods, number of samples collected, number of samples tested, laboratory involved</li> </ul>	The case reported on July 30 did not reach the threshold for further investigation.
<b>Measures taken or considered:</b>	
<ul style="list-style-type: none"> <li>Public health measures (e.g. immunisation strategy, patient and contact management, vector control, water and food safety)</li> </ul>	A public health advisory on diarrhea was created and translated into the local language for dissemination through radio. In addition, awareness on good hygiene techniques, including hand washing, is ongoing through posters and flyers.

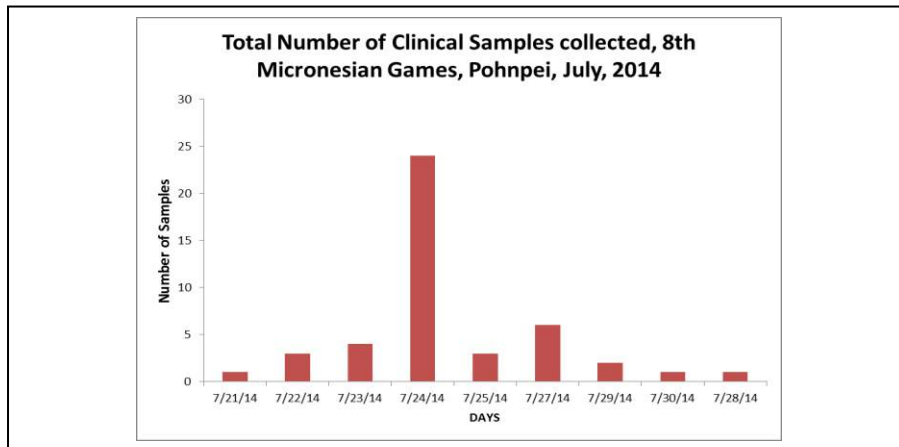
-----

<b>Syndrome</b>	Fever and jaundice
<b>Point of care (numbers of cases since July 17)</b>	Pohnpei State Hospital (1 case)
<b>Date of investigation</b>	July 25 - no tests ordered since end of games
<b>Description of investigation undertaken</b>	Case investigation form adapted from the Pacific Outbreak Manual has been used for investigation of the 2 cases of acute fever and jaundice. Investigation by the public health response team has commenced today, July 30 and report will become available tomorrow, July 31.
<b>Findings of investigation</b>	
<ul style="list-style-type: none"> <li>Number of cases (since July 17)</li> <li>Diagnostic methods, number of samples collected, number of samples tested, laboratory involved</li> </ul>	1 (no case on August 5 <sup>th</sup> ) Rapid testing was undertaken and tested negative for both cases. Dry blood spot (DBS) is being sent to Institut Louis Malarde, French Polynesia for confirmatory testing for leptospirosis. A convalescent sample will also be taken for further testing.
<b>Measures taken or considered</b>	
<ul style="list-style-type: none"> <li>Public health measures (e.g. Immunization strategy, patient and contact management, vector control, water and food safety)</li> </ul>	A public health advisory on dengue fever and leptospirosis was created and made available through posters and flyers. Prevention messages and risk communication for arboviral infections and vector-borne diseases such as leptospirosis will be intensified.

Note, the archive of daily reports can be found at: [http://www.spc.int/phs/PPHSN/Surveillance/Mass\\_gathering.htm](http://www.spc.int/phs/PPHSN/Surveillance/Mass_gathering.htm)

## Appendix 1 – Charts illustrating Laboratory Activity to 30<sup>th</sup> July 2014

The games ran from 9<sup>th</sup> to 29<sup>th</sup> July



Peak sample collection occurred on 24<sup>th</sup> July 5 days before the end of the games, a second much smaller peak of sample collection occurred on 27<sup>th</sup> July two days before the end of the games.

