

Table 1: Fiji National Notifiable Diseases system 2011 (NNDSS)

Syndrome	Month of onset						
	Jan.	Feb.	March	April	May	June	Cum. total 2010
Diarrhoea ¹	699	435	819				1953
Diarrhea with blood ²	10	17	20				47
Influenza-like illness ³	619	207	610				1436
Acute respiratory Infection ⁴	1828	1137	3219				6184
Acute Fever & Rash ⁵	0	0	1				1
Acute flaccid paralysis ⁶	0	0	0				0

Notes:

- 1 Source: Fiji National Notifiable Diseases Surveillance System (NNDSS); reported as "acute gastroenteritis", "enteritis", "gastroenteritis", "infective diarrhoea", "mild gastroenteritis", or "infective enteritis".
- 2 Source: NNDSS; reported as "dysentery amoebic & bacillary"
- 3 Source: NNDSS; reported as "influenza", or "influenza-like illness".
- 4 Source: NNDSS; reported as " pneumonia + ARI", "acute respiratory infection", "acute respiratory illness", "upper respiratory tract infection", ".
- 5 Source: Hospital Based Active Surveillance System (HBAS)
- indicates that no information was available at time of printing

Fiji NNDSS highlights

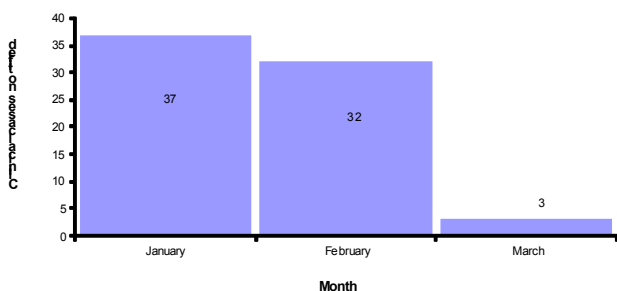
Acute respiratory illnesses : At least 3 health centers of all reporting facilities reported high cases of ARI for the month of March; Valelevu, Nausori and Navua . Compared to the previous two months and with notifications still incoming the numbers are remarkably high. **Diarrhea**: Nausori medical area reports high Diarrheal cases for March. **Influenza like illness** : Three health facilities report active ILI activity for the month March: Koro, Korovou and the military army hospital. In addition Nausori and Rotuma experienced clusters of ILI with subsequent lab confirmed Influenza B and H1N1 pandemic strain .

Pacific Syndromic Surveillance

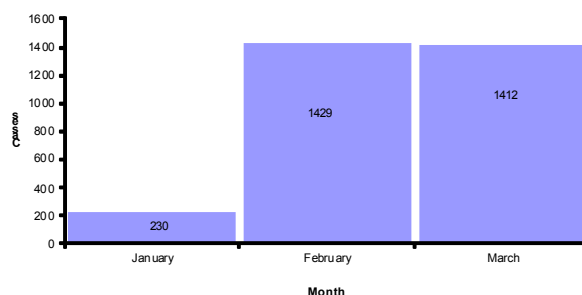
In Fiji syndromic surveillance is carried out via a mobile health platform. The graphs below depict the cases reported via this system. All cases are clinically diagnosed.

Notification summary 2011	Jan	Feb	March
Number of sentinel sites	12	12	12
Number of sites reporting	3	5	2

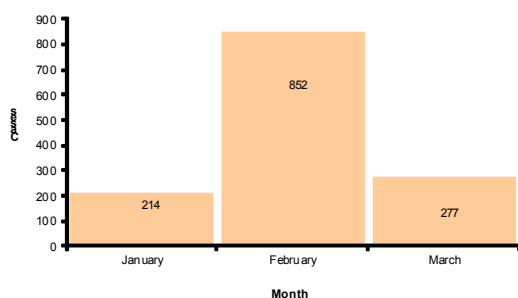
Fg1: Acute fever and rash Jan-March 2011



Fg.2 Influenza like illnesses Jan- March 2011



Fg.3:Diarrhea Jan-March 2011



Fg.4: Prolonged fever Jan-March 2011

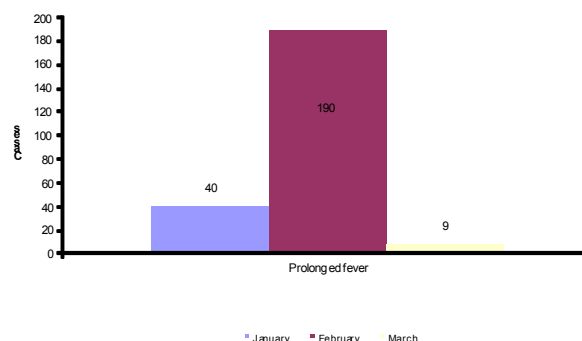


Table 3: Laboratory confirmed new cases from Fiji Centre Communicable Disease Control (FCCDC) and divisional laboratories

Table 3: Jan - March 2011						
Selected diseases	Tests requested			2011		
	Jan.	Feb.	March	Cumulative total tests requested	Current month positive	Cumulative positive cases
Measles ¹	1	9	0	10	0	0
Rubella ¹	1	9	0	10		0
Dengue Fever ¹	3	7	28	38	8	17
Influenza ¹	1	0	42	43	18	18
Leptospirosis ¹	3	14	16	33	-	-
HIV/AIDS ¹	12	23	24	59	-	-
Typhoid fever ²	-	-	-	-		130
Cholera ²	0	0	0	0	0	0

Legend :
 - : Not available
 Data Source :
 1. 1 : FCCDC Laboratory (Mataika House)
 2. 2: Divisional Laboratories CWMH, Labasa & Lautoka
 3. HIV : Case count as at 3rd qtr NACA seating 2010

A total of 110 test requests were received at the centre for the month of March. 70% of these were processed. Leptospirosis tests are pending as the laboratory awaits reagent supplies. HIV figures for the year have not been approved for release at time of publication.

18 Influenza cases were confirmed via rt-pcr. Table 4 below outlines a summary as at 31st March.

Dengue fever:

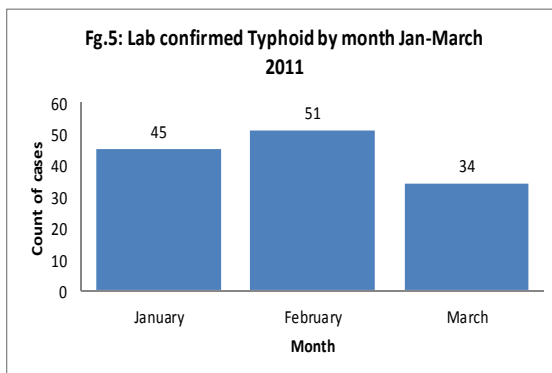
A total of 9 Dengue cases were confirmed at the centre for the month of March. All were primary infections and confirmed at the following medical facilities: Vunidawa, Naqali, Valelevu, Labasa and CWMH. The remaining 8 cases from Jan-Feb are secondary infections. Age range of cases 7-39 years with 7 cases of unknown age. All health staff are reminded to maintain vigilance and urged to consider potential dengue in **persons presenting with an acute febrile illness of 2 – 7 days duration with 2 or more of the following: headache, retro-orbital, pain, myalgia, arthralgia, rash, haemorrhagic manifestation.** Please refer to the Fiji CD Manual for guidelines to treatment and management of Dengue. In addition to obtaining samples for testing vector monitoring at specific areas of infection is advised.

Table 4: Lab confirmed Influenza characteristics at sentinel sites Jan -March 2011

Division	
Central	14
Eastern	4
Total	18
Sentinel site	
Nausorii	14
Rotuma	4
Total	18
Age group affected	
0-9	1
10-19	14
20-29	1
30-39	2
Total	18
Circulating Influenza type	
Pandemic A H1N1	4
Seasonal Flu B	14
Total	18



Typhoid surveillance
 As at 31st of March a total of 130 Typhoid cases were confirmed in the three health divisions. Figures are lower than that compared to the previous three years. The current trend is declining. Similarly in the Northern division two medical areas: Nabouwalu and Savusavu which documented significant numbers early in the year cases are decreasing. CWMH registered the most number of cases for the month of March. Age most affected: 20-29 (n= 41), 10-19 (n= 25).



Division	
Central	47
Northern	52
Western	31
Total	130
Gender	
Female	59
Male	71
Total	130

Acknowledgement goes to all reporting health officers, main divisional laboratories, and WHO Suva Office for contin-



ued support to this publication. Further clarifications, contribution and or inquires for the bulletin may be forwarded to the centre or by contacting Aggie on telephone 3320066

