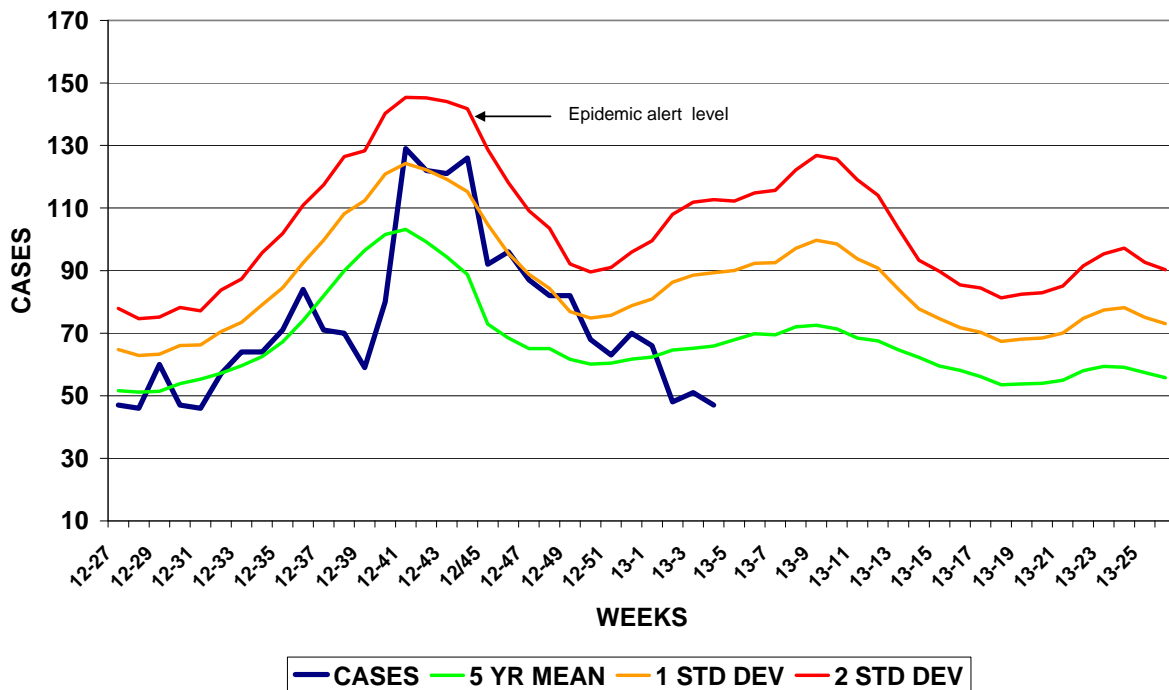


# GUAM EPIDEMIOLOGY NEWSLETTER

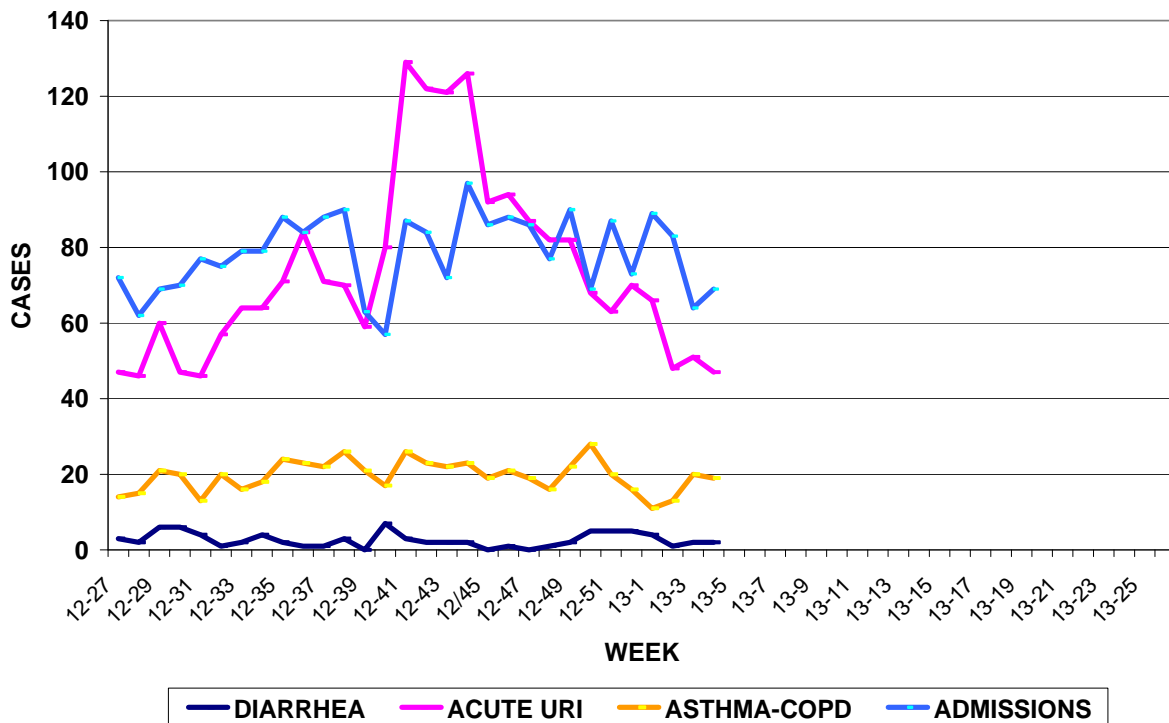
REPORT FOR WEEK ENDING: 1/26/2013 (Reporting week 2013-4)

## GUAM REPORTS

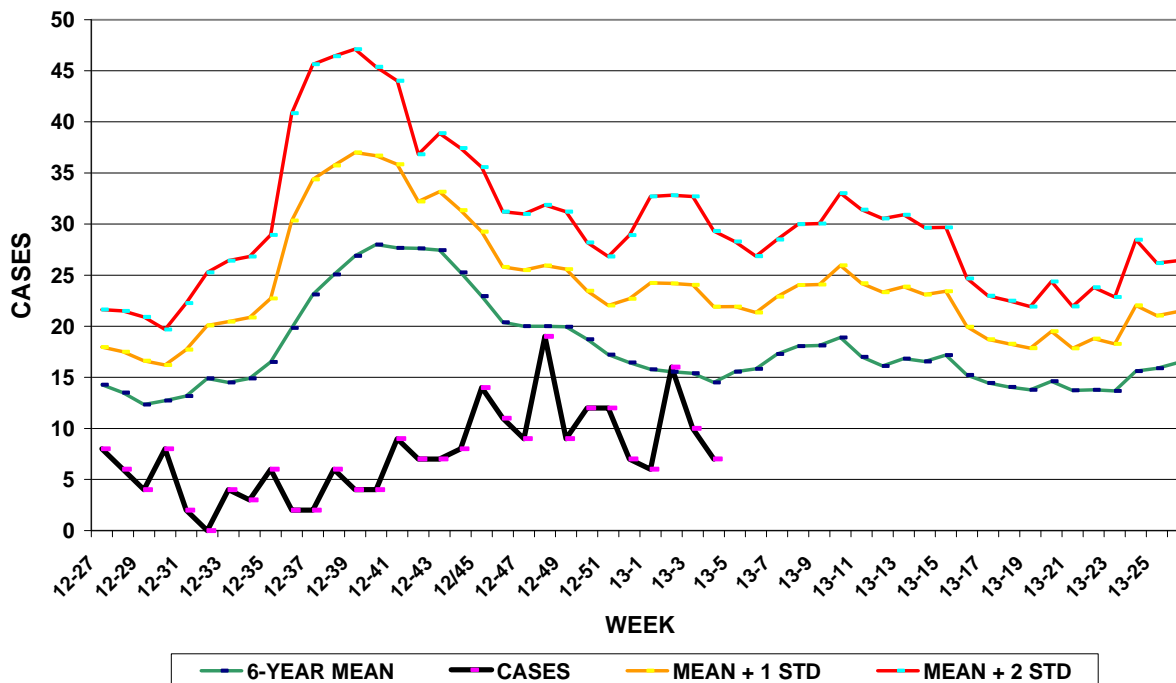
**GUAM ACUTE RESPIRATORY INFECTION SURVEILLANCE 2012-13;  
 GMHA-EMERGENCY DEPARTMENT PATIENTS BY WEEK SEEN**



**GUAM SYNDROMIC DISEASE SURVEILLANCE  
 GMHA-ED PATIENT DIAGNOSES BY WEEK, 2012-2013**



MEDICAL RECORDS AND INFECTION CONTROL DEPARTMENTS  
 GUAM MEMORIAL HOSPITAL AUTHORITY  
**HOSPITAL INPATIENT DISCHARGES WITH A DIAGNOSIS OF PNEUMONIA  
 BY WEEK DISCHARGED, 2012-2013**



**GUAM SENTINEL PHYSICIAN INFLUENZA SURVEILLANCE  
 REPORTS OF INFLUENZA OR INFLUENZA-LIKE ILLNESSES  
 RECEIVED FOR THE WEEK ENDING 1/26/2013**

Sporadic – Two cases reported by sentinel physicians

(ACTIVITY LEVELS: No activity, Sporadic, Local, Regional, Widespread)

Foreign Quarantine & Enteric Diseases Section  
 Bureau of Communicable Disease Control

Guam Department of Public Health & Social Services

**H1N1 INFLUENZA SURVEILLANCE, WEEK 4, 2013**

**NO CASES OF H1N1 REPORTED FOR WEEK 4**

**Cumulative 2013: 0 civilian & 0 military cases**

INFECTION CONTROL DEPARTMENT  
 GUAM MEMORIAL HOSPITAL AUTHORITY

**HOSPITALIZATIONS FOR INFLUENZA A or B BY AGE  
 AND MORBIDITY REPORTING WEEK, 2013**

	WEEK										
AGE	1	2	3	4	5	6	7	8	9	10	TOTAL
0-4											
5-18											
19-24											
25-49											
50-64											
65+											
TOTAL	0	0	0	0							

INFECTION CONTROL DEPARTMENT  
 GUAM MEMORIAL HOSPITAL AUTHORITY  
**GMHA-EMERGENCY DEPARTMENT CLINICAL DIAGNOSES OF INFLUENZA OR  
 FLU-SYNDROME BY WEEK AND PATIENT'S VILLAGE OF RESIDENCE, 2013**  
 (Villages listed geographically from northern-most to southern-most)

VILLAGE	WEEK										TOTAL	2013 RATE
	1	2	3	4	5	6	7	8	9	10		
Yigo	0	1	1	1							3	14.38
Dededo	2	2	1	0							5	10.98
Tamuning	0	0	1	0							1	4.95
Barrigada	1	0	1	0							2	22.37
Mangilao	1	1	2	0							4	25.39
M-T-M	0	0	0	0								0.00
Hagatna	1	0	0	0							1	76.86
Agaña Hts	0	0	0	0								0.00
Sinajana	0	0	0	0								0.00
Chalan Pago-Ordot	0	0	0	0								0.00
Asan-Maina	0	0	0	0								0.00
Piti	0	0	0	0								0.00
Santa Rita	0	0	0	1							1	17.67
Agat	0	0	0	0								0.00
Yona	0	1	1	0							2	30.87
Talofof	0	0	0	0								0.00
Inarajan	0	0	0	0								0.00
Merizo	0	0	0	0								0.00
Umatac	0	0	0	0								0.00
Tourist	1	0	0	0							1	
Unknown	0	0	0	0								
<b>TOTAL</b>	<b>6</b>	<b>5</b>	<b>7</b>	<b>2</b>							<b>20</b>	<b>11.20</b>

NOTE: Rate = cases per 100,000 population for the specified period.

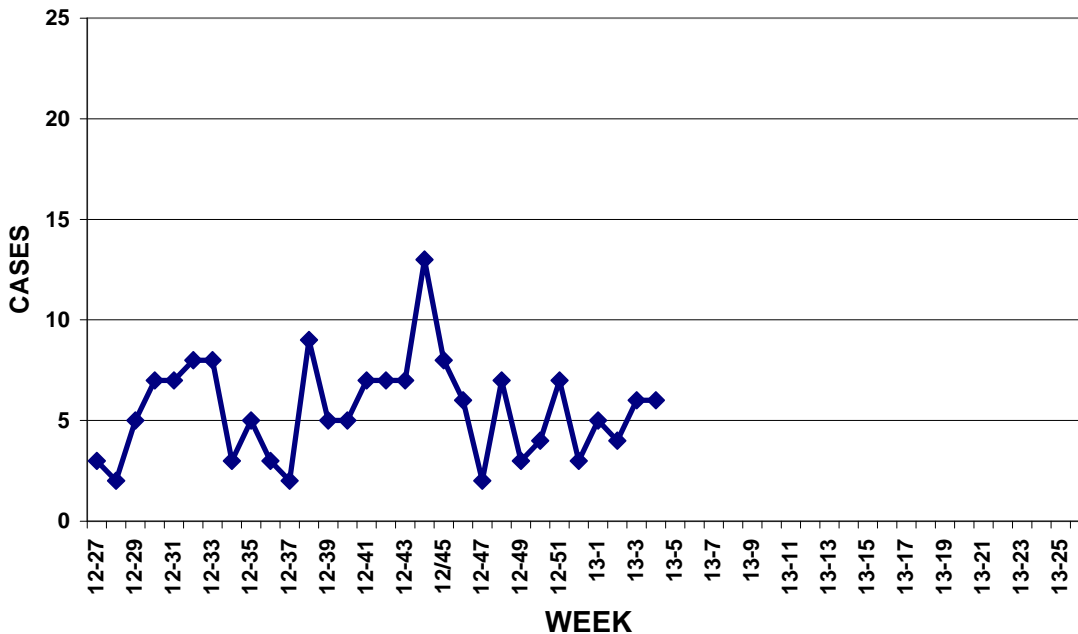
**GUAM ANIMAL DISEASE (ZONOSSES) REPORTS**  
 REPORTS RECEIVED FOR THE WEEK ENDING 1/26/2013

No reports received

Bureau of Communicable Disease Control  
**Guam Department of Public Health & Social Services**  
**ISLAND-WIDE COMMUNICABLE DISEASE REPORT**  
 REPORTS RECEIVED FOR THE WEEK ENDING 1/26/2012

<i>Chlamydia trachomatis</i>	16
Conjunctivitis	4
Gonorrhea	1
Hepatitis C	3
HPV	1
HSV 2	1
MRSA	15
Scarlet fever	1
Streptococcal sore throat	5
Streptococcal infection, other	1
Tuberculosis	2
<i>Trichomonas vaginalis</i>	1

PREVENTIVE MEDICINE DEPARTMENT  
 U.S. NAVAL HOSPITAL GUAM  
**PNEUMONIA CASES SEEN IN GUAM MILITARY TREATMENT  
 FACILITIES BY WEEK REPORTED, 2012-2013**



## EPINEWS

Influenza-like-illness is declining in parts of the country and increasing in others while remaining elevated nationally overall. In addition, hospitalizations and deaths have risen steeply in recent weeks, particularly impacting people 65 and older. CDC routinely recommends vaccination as long as influenza viruses are circulating. CDC also recommends that *high risk* persons, including seniors, seek care as soon as possible for flu symptoms as antiviral treatment can avert serious flu outcomes. *Source:* <http://www.cdc.gov/Flu/index.htm> Accessed 1/30/13