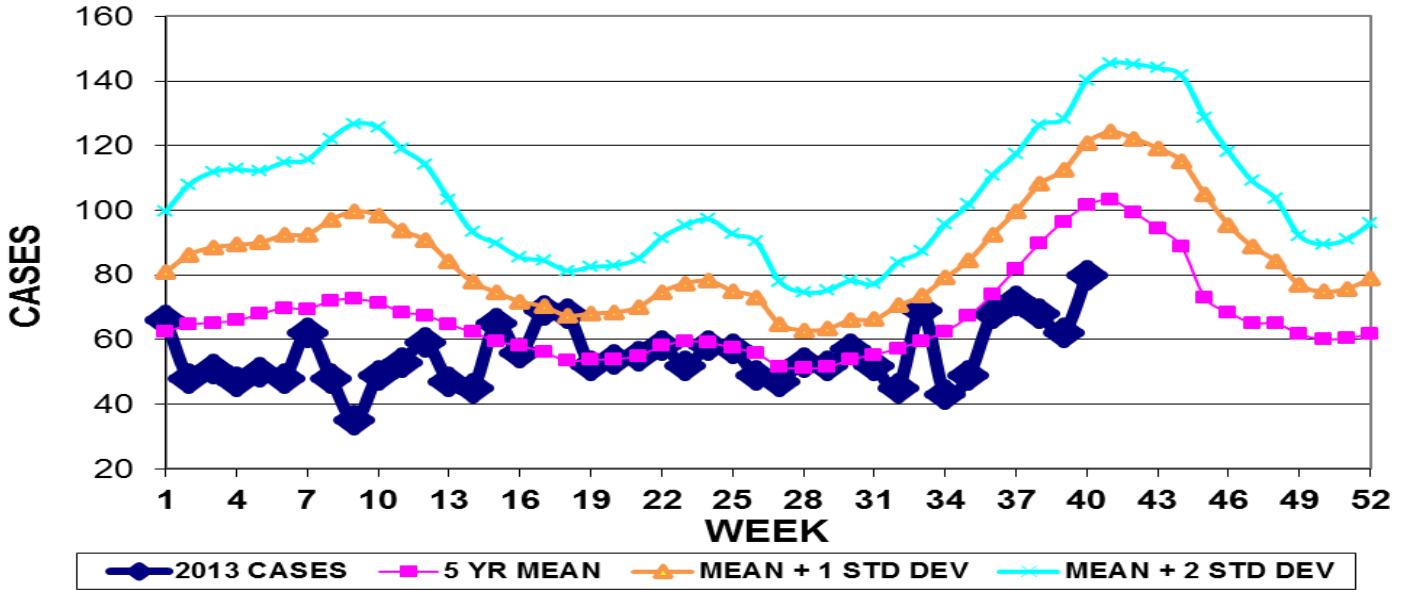


# GUAM EPIDEMIOLOGY NEWSLETTER

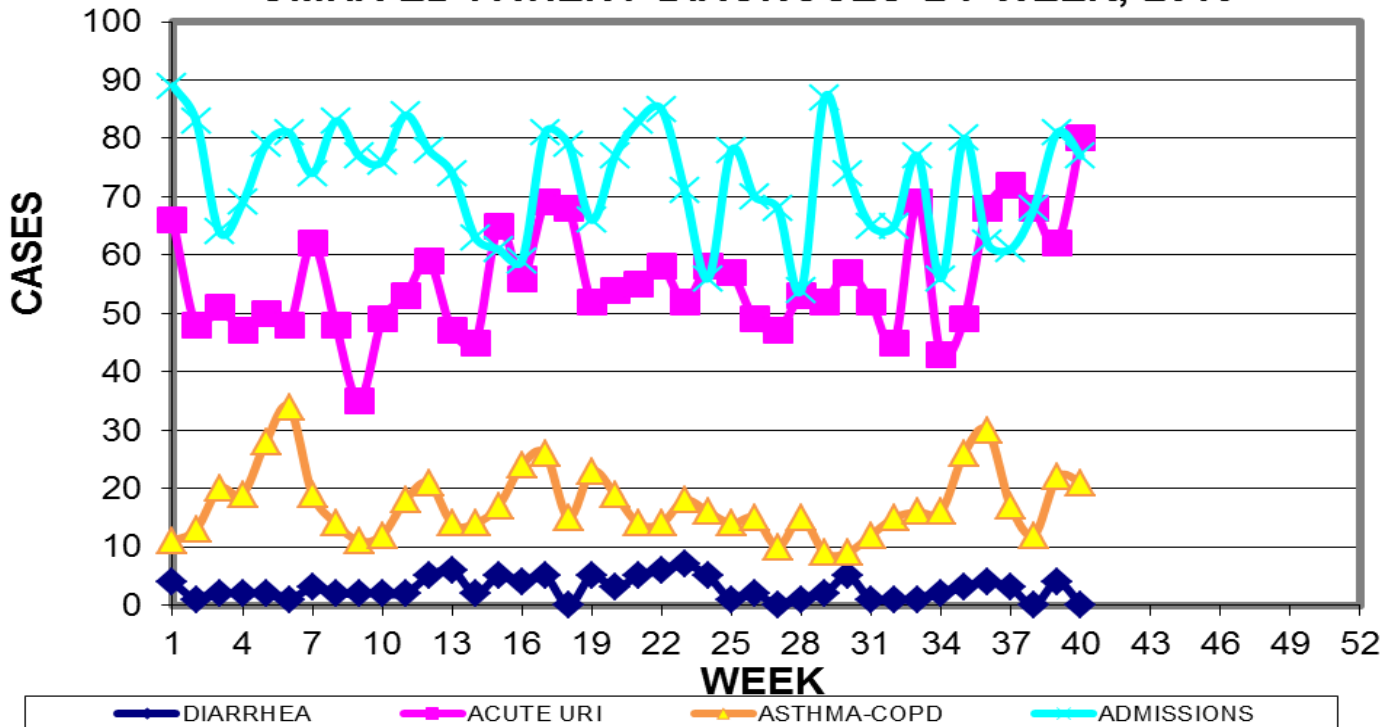
REPORT FOR WEEK ENDING: 10/5/2013 (Reporting week 2013-40)

## GUAM REPORTS

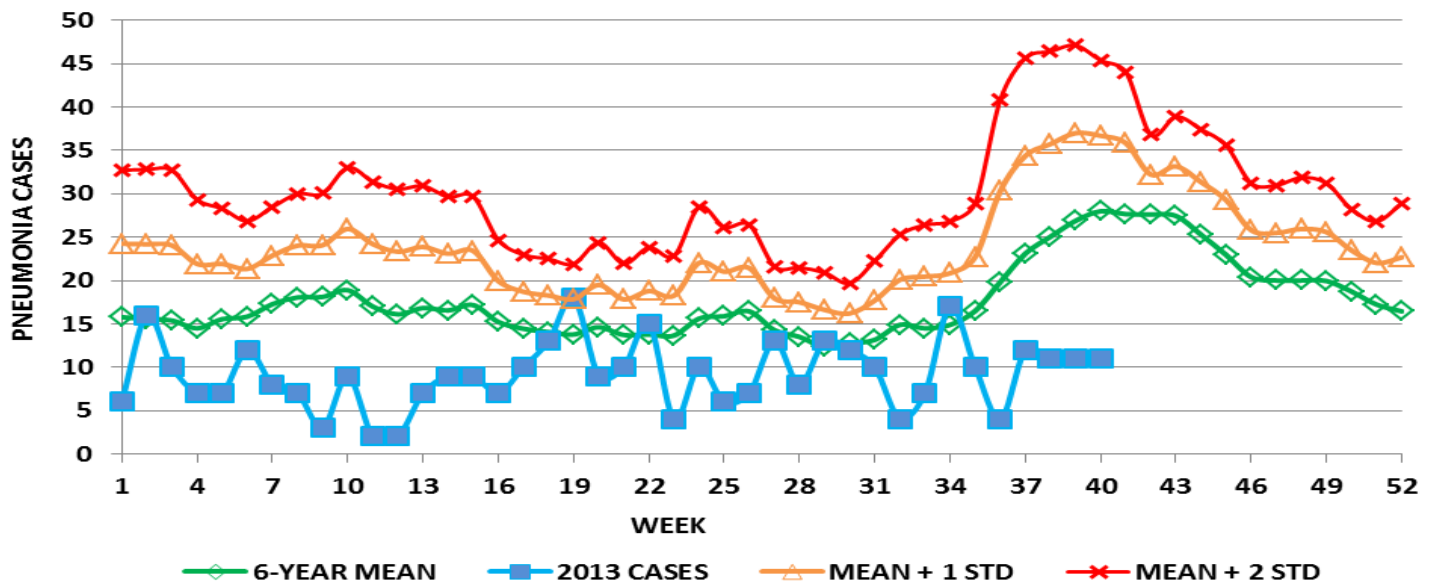
### GUAM ACUTE RESPIRATORY INFECTION SURVEILLANCE 2013; GMHA-EMERGENCY DEPARTMENT PATIENTS BY WEEK SEEN



### GUAM SYNDROMIC DISEASE SURVEILLANCE GMHA-ED PATIENT DIAGNOSES BY WEEK, 2013



**MEDICAL RECORDS AND INFECTION CONTROL DEPARTMENTS  
GUAM MEMORIAL HOSPITAL AUTHORITY  
HOSPITAL INPATIENT DISCHARGES WITH A DIAGNOSIS OF PNEUMONIA  
BY WEEK DISCHARGED, 2013**



**GUAM SENTINEL PHYSICIAN INFLUENZA SURVEILLANCE  
REPORTS OF INFLUENZA OR INFLUENZA-LIKE ILLNESSES  
RECEIVED FOR THE WEEK ENDING 10/5/13**

Sporadic – No cases reported by sentinel physicians

(ACTIVITY LEVELS: No activity, Sporadic, Local, Regional, Widespread)

Foreign Quarantine & Enteric Diseases Section  
Bureau of Communicable Disease Control

Guam Department of Public Health & Social Services

**H1N1 INFLUENZA SURVEILLANCE, WEEK 40, 2013**

NO CASES OF H1N1 REPORTED FOR WEEK 40

**Cumulative 2013: 0 civilian & 0 military cases**

INFECTION CONTROL DEPARTMENT  
GUAM MEMORIAL HOSPITAL AUTHORITY

**HOSPITALIZATIONS FOR INFLUENZA A BY AGE  
AND MORBIDITY REPORTING WEEK**

| AGE   | 31 | 32 | 33 | 34 | 35 | 36 | 37 | 38 | 39 | 40 | TOTAL |
|-------|----|----|----|----|----|----|----|----|----|----|-------|
| 0-4   |    |    |    |    |    |    |    |    |    |    | 2     |
| 5-18  |    |    |    |    |    |    |    |    |    |    |       |
| 19-24 |    |    |    |    |    |    |    |    |    |    |       |
| 25-49 |    |    |    |    |    |    |    |    |    |    |       |
| 50-64 |    |    |    |    |    |    |    |    |    |    |       |
| 65+   |    |    |    |    |    |    |    |    |    |    |       |
| TOTAL | 0  | 0  | 0  | 0  | 0  | 0  | 0  | 0  | 0  | 0  | 2     |

INFECTION CONTROL DEPARTMENT  
 GUAM MEMORIAL HOSPITAL AUTHORITY  
**GMHA-EMERGENCY DEPARTMENT CLINICAL DIAGNOSES OF INFLUENZA OR FLU-  
 SYNDROME BY WEEK AND PATIENT'S VILLAGE OF RESIDENCE, 2013**  
 (Villages listed geographically from northern-most to southern-most)

| VILLAGE               | WEEK     |          |          |          |          |           |          |           |          |           | TOTAL      | 2013 RATE     |
|-----------------------|----------|----------|----------|----------|----------|-----------|----------|-----------|----------|-----------|------------|---------------|
|                       | 31       | 32       | 33       | 34       | 35       | 36        | 37       | 38        | 39       | 40        |            |               |
| Yigo                  | 1        | 1        | 2        | 0        | 0        | 2         | 0        | 3         | 1        | 0         | 26         | 124.65        |
| Dededo                | 1        | 0        | 0        | 0        | 1        | 7         | 1        | 4         | 2        | 4         | 69         | 151.54        |
| Tamuning              | 1        | 0        | 0        | 0        | 2        | 1         | 2        | 2         | 0        | 2         | 22         | 108.98        |
| Barrigada             | 0        | 0        | 0        | 0        | 0        | 1         | 2        | 6         | 1        | 1         | 17         | 190.11        |
| Mangilao              | 0        | 0        | 0        | 0        | 1        | 0         | 0        | 1         | 2        | 0         | 19         | 120.60        |
| M-T-M                 | 0        | 1        | 0        | 0        | 1        | 1         | 0        | 1         | 0        | 2         | 21         | 294.99        |
| Hagatna               | 0        | 0        | 0        | 0        | 0        | 0         | 0        | 0         | 0        | 0         | 3          | 289.58        |
| Agaña Hts             | 0        | 0        | 0        | 0        | 0        | 0         | 0        | 1         | 0        | 0         | 4          | 106.16        |
| Sinajana              | 0        | 0        | 0        | 0        | 1        | 0         | 0        | 1         | 0        | 0         | 5          | 198.89        |
| Chalan Pago-<br>Ordot | 0        | 0        | 2        | 0        | 0        | 0         | 0        | 1         | 1        | 2         | 12         | 169.20        |
| Asan-Maina            | 0        | 0        | 0        | 0        | 0        | 0         | 0        | 0         | 0        | 0         | 0          | 0.00          |
| Piti                  | 0        | 0        | 0        | 0        | 0        | 0         | 0        | 1         | 0        | 0         | 3          | 215.83        |
| Santa Rita            | 0        | 0        | 0        | 0        | 0        | 0         | 0        | 0         | 1        | 0         | 4          | 70.68         |
| Agat                  | 0        | 0        | 0        | 0        | 0        | 0         | 0        | 1         | 0        | 0         | 9          | 191.69        |
| Yona                  | 1        | 1        | 0        | 0        | 1        | 2         | 0        | 0         | 0        | 1         | 13         | 200.65        |
| Talofof               | 0        | 0        | 1        | 0        | 0        | 0         | 0        | 2         | 0        | 0         | 6          | 199.93        |
| Inarajan              | 0        | 0        | 0        | 0        | 0        | 0         | 0        | 0         | 0        | 0         | 0          | 0.00          |
| Merizo                | 0        | 0        | 0        | 0        | 0        | 0         | 0        | 0         | 0        | 0         | 0          | 0.00          |
| Umatac                | 0        | 0        | 0        | 0        | 0        | 0         | 0        | 0         | 0        | 0         | 0          | 133.16        |
| Tourist               | 0        | 0        | 0        | 0        | 0        | 0         | 0        | 0         | 0        | 0         | 1          |               |
| Unknown               | 0        | 0        | 0        | 0        | 0        | 0         | 0        | 0         | 0        | 0         | 0          |               |
| <b>TOTAL</b>          | <b>4</b> | <b>4</b> | <b>5</b> | <b>0</b> | <b>7</b> | <b>14</b> | <b>5</b> | <b>24</b> | <b>8</b> | <b>12</b> | <b>235</b> | <b>146.21</b> |

NOTE: Rate = cases per 100,000 population for the specified period.

**GUAM ANIMAL DISEASE (ZONOSSES) REPORTS**  
 REPORTS RECEIVED FOR THE WEEK ENDING 10/5/2013

Anaplasmosis - 5 canine, Ehrlichiosis – 1 canine

Bureau of Communicable Disease Control  
**Guam Department of Public Health & Social Services**  
**ISLAND-WIDE COMMUNICABLE DISEASE REPORT**

REPORTS RECEIVED FOR THE WEEK ENDING 10/5/2013

|   |    |
|---|----|
| <i>Chlamydia trachomatis</i>            | 54 |
| Conjunctivitis                          | 19 |
| <i>Enterobacter cloacae</i> MDR         | 1  |
| <i>E. coli</i> MDR, ESBL+               | 1  |
| Gonorrhea                               | 2  |
| Hand, foot, and mouth disease           | 3  |
| Hepatitis B                             | 2  |
| Hepatitis C                             | 1  |
| HPV                                     | 6  |
| HSV 2                                   | 1  |
| Influenza A                             | 1  |
| <i>Klebsiella pneumoniae</i> MDR, ESBL+ | 2  |
| MRSA                                    | 10 |
| Respiratory syncytial virus             | 5  |
| <i>Salmonella</i> sp.                   | 1  |
| Streptococcal sore throat               | 1  |
| Streptococcal disease, other            | 4  |
| Tuberculosis, pulmonary                 | 3  |
| VRE                                     | 2  |

PREVENTIVE MEDICINE DEPARTMENT  
 U.S. NAVAL HOSPITAL GUAM  
**PNEUMONIA CASES SEEN IN GUAM MILITARY  
 TREATMENT FACILITIES BY WEEK REPORTED, 2013**

