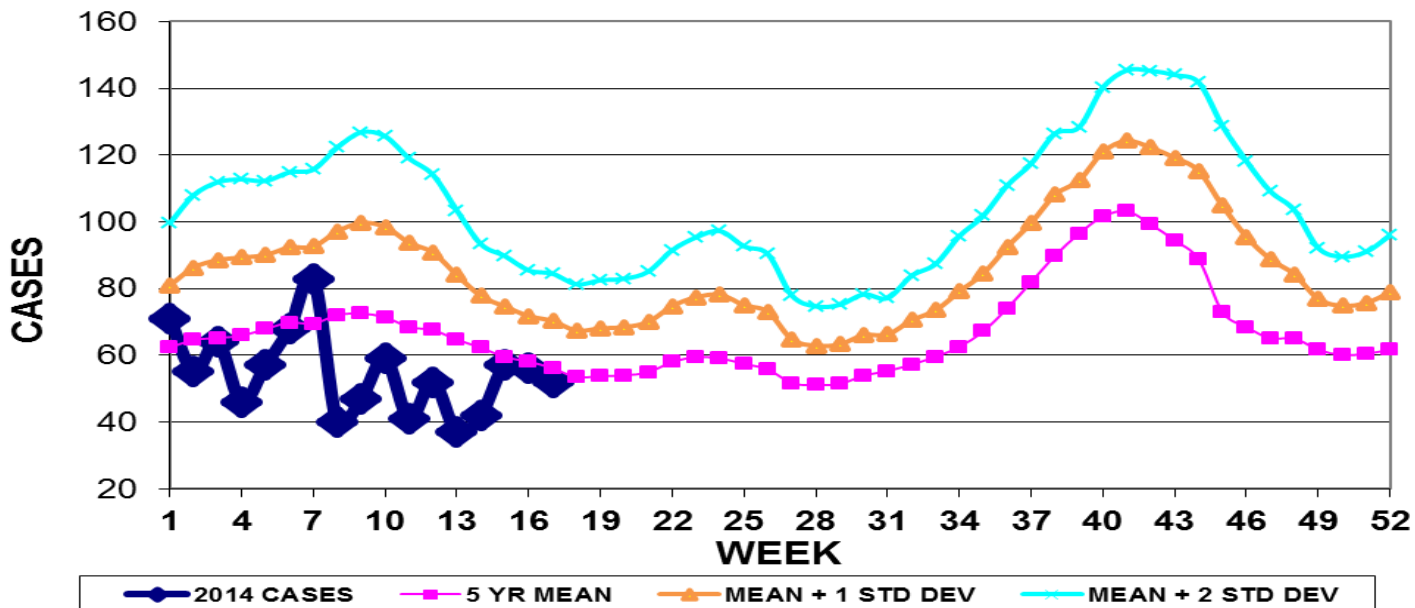


INFECTION CONTROL DEPARTMENT
 GUAM MEMORIAL HOSPITAL AUTHORITY
GUAM EPIDEMIOLOGY NEWSLETTER

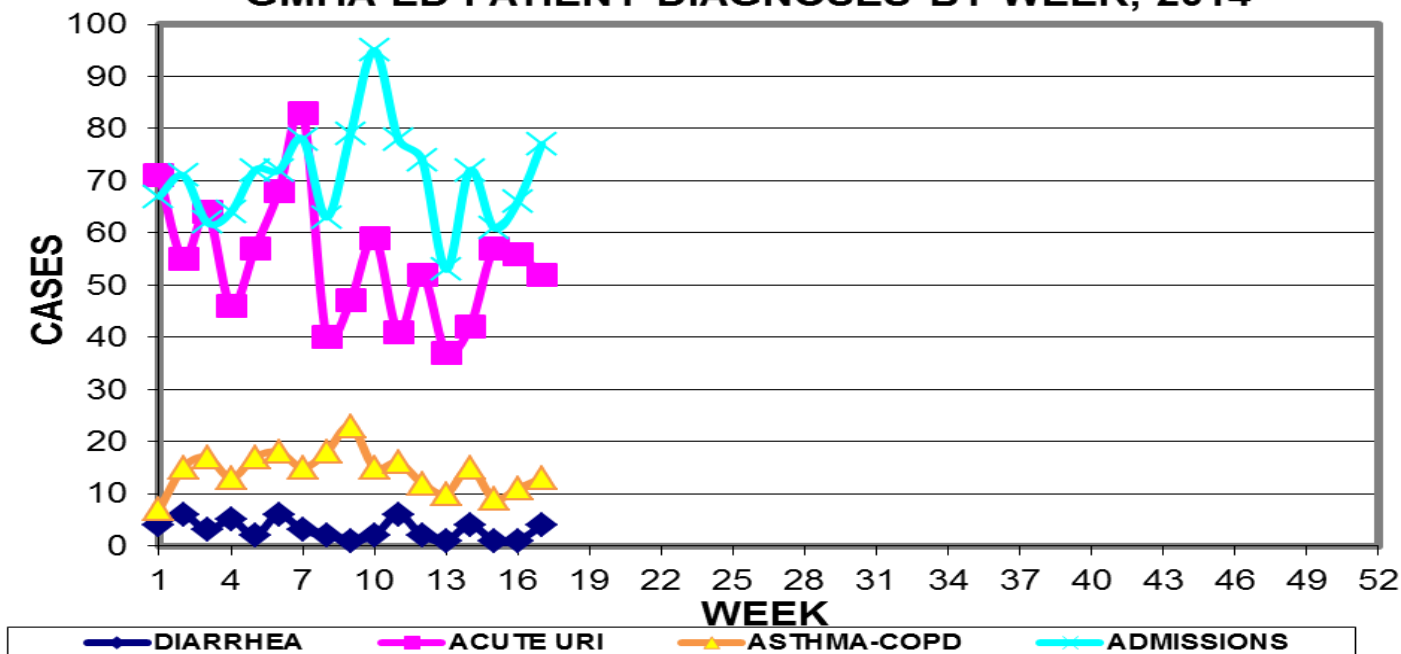
REPORT FOR WEEK ENDING: 4/26/2014 (Reporting week 2014-17)

GUAM REPORTS

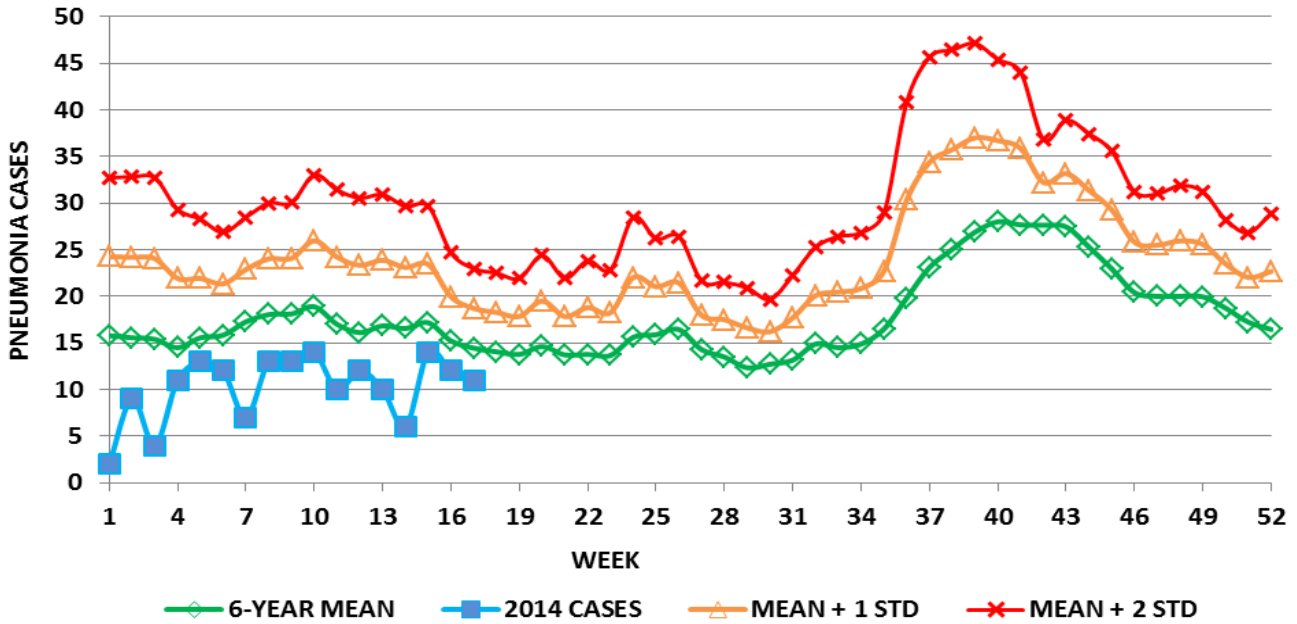
**GUAM ACUTE RESPIRATORY INFECTION SURVEILLANCE 2014;
 GMHA-EMERGENCY DEPARTMENT PATIENTS BY WEEK SEEN**



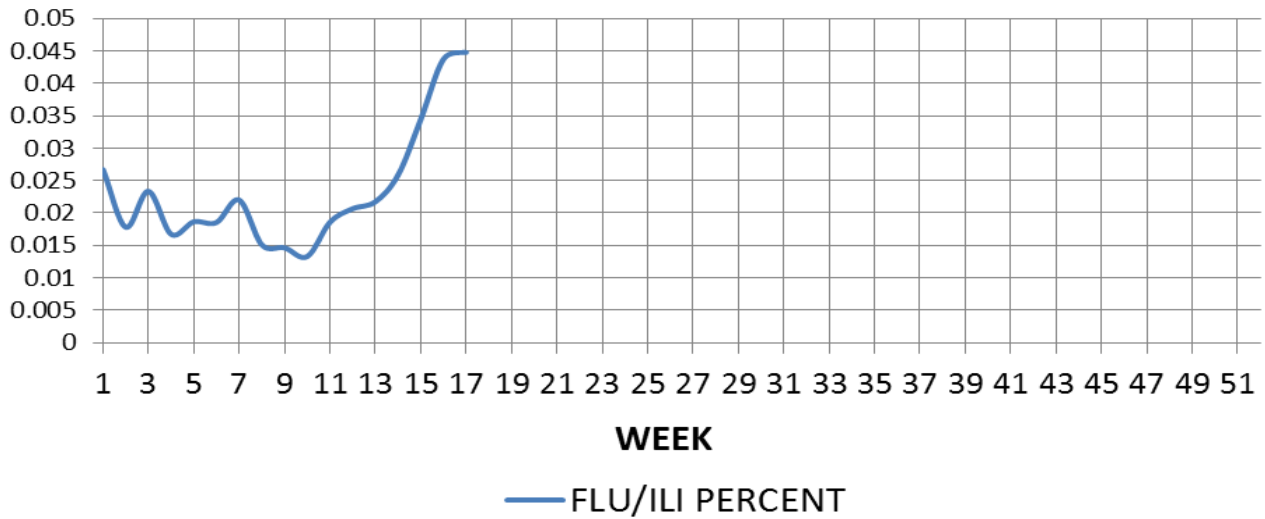
**GUAM SYNDROMIC DISEASE SURVEILLANCE
 GMHA-ED PATIENT DIAGNOSES BY WEEK, 2014**



**MEDICAL RECORDS AND INFECTION CONTROL DEPARTMENTS
GUAM MEMORIAL HOSPITAL AUTHORITY
HOSPITAL INPATIENT DISCHARGES WITH A DIAGNOSIS OF PNEUMONIA
BY WEEK DISCHARGED, 2014**



**PROPORTION OF TOTAL GMHA EMERGENCY DEPARTMENT
PATIENTS WITH FLU/ILI SYMPTOMS - 2014 (3 WEEK MEAN)**



GUAM SENTINEL PHYSICIAN INFLUENZA SURVEILLANCE

REPORTS OF INFLUENZA OR INFLUENZA-LIKE ILLNESSES

RECEIVED FOR THE WEEK ENDING 4/26/14

Two cases reported by sentinel physicians

Bureau of Communicable Disease Control

Guam Department of Public Health & Social Services

H1N1 INFLUENZA SURVEILLANCE, WEEK 17, 2014

NO CASES OF H1N1 REPORTED FOR WEEK 17

Cumulative 2014: 0 civilian & 0 military cases

INFECTION CONTROL DEPARTMENT

GUAM MEMORIAL HOSPITAL AUTHORITY

HOSPITALIZATIONS FOR INFLUENZA A BY AGE

AND MORBIDITY REPORTING WEEK

AGE	8	9	10	11	12	13	14	15	16	17	TOTAL
0-4					1						1
5-18											
19-24											
25-49											
50-64											1
65+											
TOTAL	0	0	0	0	1	0	0	0	0	0	2

Bureau of Communicable Disease Control

Guam Department of Public Health & Social Services

ISLAND-WIDE COMMUNICABLE DISEASE REPORT

REPORTS RECEIVED FOR THE WEEK ENDING 4/26/2014

Chickenpox	1
<i>Chlamydia trachomatis</i>	11
<i>Citrobacter koseri</i>	1
<i>Clostridium difficile</i>	1
Conjunctivitis	7
<i>E. coli</i> MDR	5
Gonorrhea	2
Hansen's disease	4
Hepatitis B	2
<i>Klebsiella pneumoniae</i> MDR, ESBL+	4
MRSA	15
Salmonellosis	1
Scabies	8
Streptococcal sore throat	4
Tuberculosis	6

INFECTION CONTROL DEPARTMENT
 GUAM MEMORIAL HOSPITAL AUTHORITY
**GMHA-EMERGENCY DEPARTMENT CLINICAL DIAGNOSES OF INFLUENZA OR FLU-
 SYNDROME BY WEEK AND PATIENT'S VILLAGE OF RESIDENCE, 2013**
 (Villages listed geographically from northern-most to southern-most)

VILLAGE	WEEK										TOTAL	2014 RATE
	8	9	10	11	12	13	14	15	16	17		
Yigo	0	2	0	0	3	1	3	2	2	1	21	101.20
Dededo	0	0	4	2	4	1	4	5	9	6	60	132.14
Tamuning	1	2	0	2	3	0	4	5	5	1	31	155.87
Barrigada	0	1	2	1	1	4	0	0	1	0	16	178.43
Mangilao	0	1	2	2	0	0	0	3	1	2	16	104.25
M-T-M	0	1	0	0	0	2	0	0	2	2	11	159.54
Hagatna	0	0	0	0	0	1	0	0	1	0	3	282.49
Agaña Hts	0	0	0	0	0	0	0	0	0	0	1	25.99
Sinajana	0	0	1	0	0	0	0	1	0	1	6	229.10
Chalan Pago-Ordot	0	0	1	0	0	1	1	1	1	0	8	116.08
Asan-Maina	0	0	0	0	0	0	0	0	0	0	0	0
Piti	0	0	0	0	0	0	0	0	0	0	2	136.15
Santa Rita	0	1	0	0	0	0	0	1	0	0	2	32.54
Agat	0	0	0	0	0	0	0	0	0	1	2	40.26
Yona	0	0	1	0	0	1	0	2	0	0	7	106.92
Talofofo	0	0	0	0	0	0	0	0	1	0	6	194.74
Inarajan	0	0	0	0	0	0	0	1	0	0	3	130.66
Merizo	0	0	0	0	0	0	1	0	0	1	3	160.51
Umatac	0	0	0	0	0	0	0	0	1	0	2	253.16
Tourist	0	0	1	2	0	0	0	0	0	6	6	
Unknown	0	0	0	0	0	0	0	2	0	0	2	
TOTAL	1	8	12	9	11	11	15	23	24	17	210	130.43

NOTE: Rate = cases per 100,000 population for the specified period.

INFLUENZA/ILI ACTIVITY LEVEL - Regional

(ACTIVITY LEVELS: No activity, Sporadic, Local, Regional, Widespread)

GUAM ANIMAL DISEASE (ZONOSSES) REPORTS
 REPORTS RECEIVED FOR THE WEEK ENDING 4/26//2014

Babesiosis – 2 canine