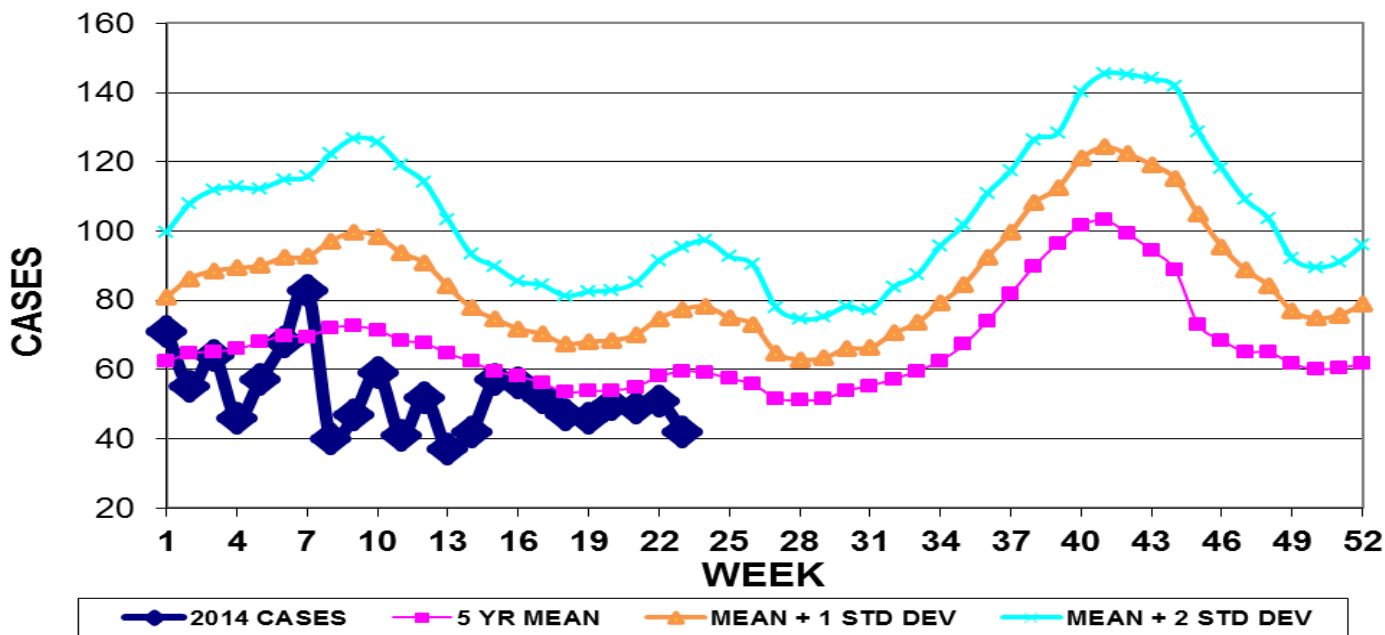


INFECTION CONTROL DEPARTMENT
 GUAM MEMORIAL HOSPITAL AUTHORITY
GUAM EPIDEMIOLOGY NEWSLETTER

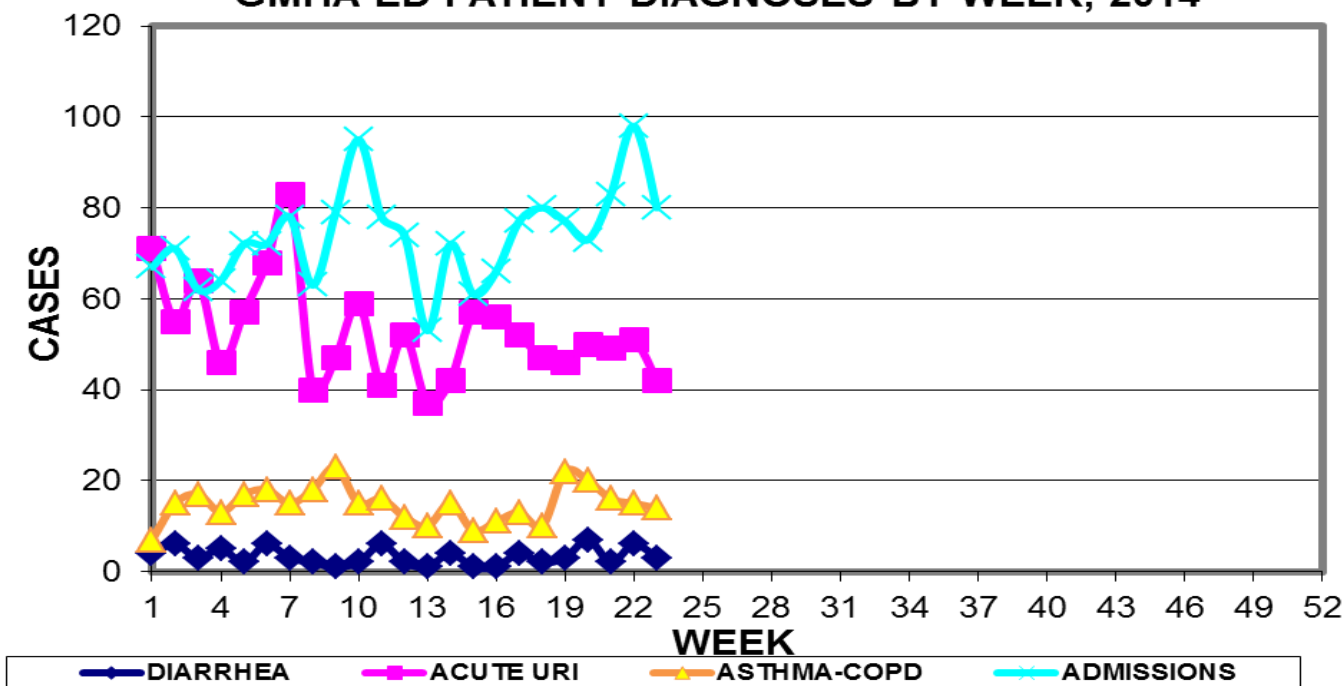
REPORT FOR WEEK ENDING: 6/7/2014 (Reporting week 2014-23)

GUAM REPORTS

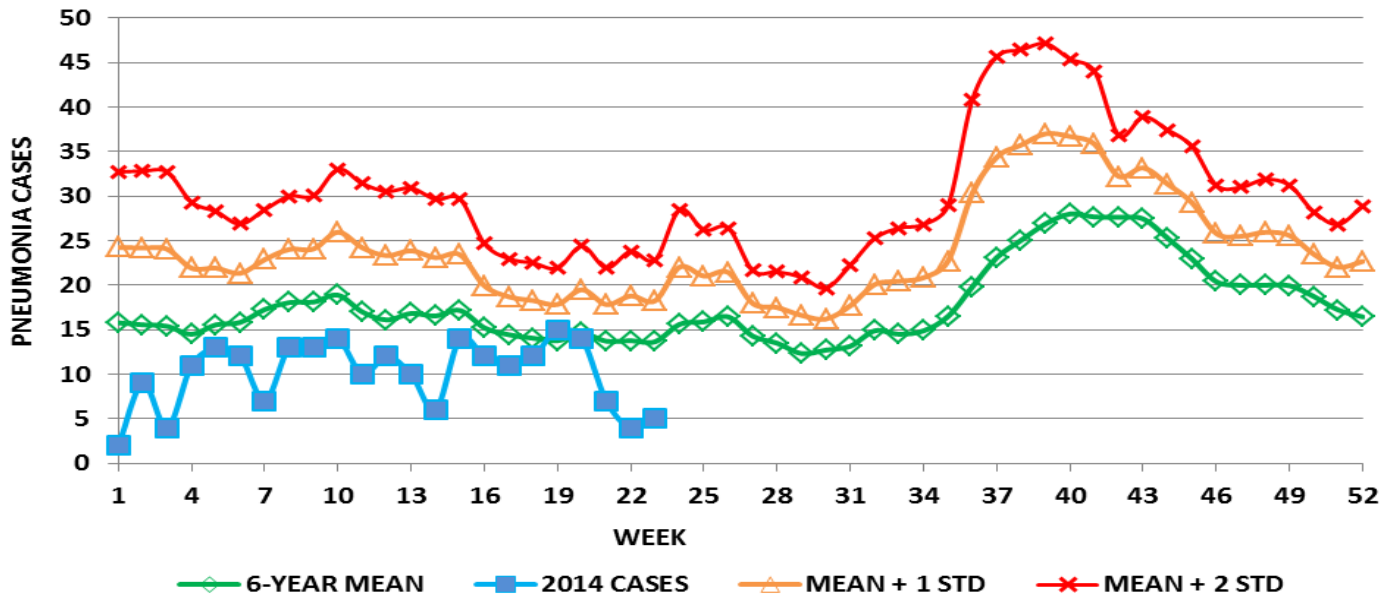
**GUAM ACUTE RESPIRATORY INFECTION SURVEILLANCE 2014;
 GMHA-EMERGENCY DEPARTMENT PATIENTS BY WEEK SEEN**



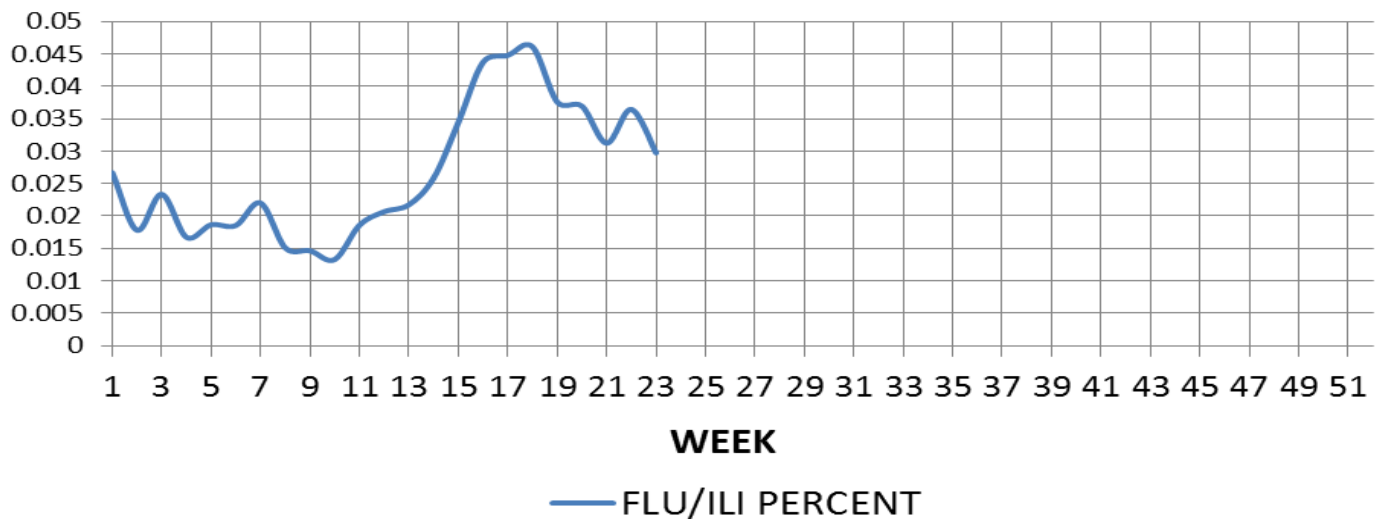
**GUAM SYNDROMIC DISEASE SURVEILLANCE
 GMHA-ED PATIENT DIAGNOSES BY WEEK, 2014**



**MEDICAL RECORDS AND INFECTION CONTROL DEPARTMENTS
GUAM MEMORIAL HOSPITAL AUTHORITY
HOSPITAL INPATIENT DISCHARGES WITH A DIAGNOSIS OF PNEUMONIA
BY WEEK DISCHARGED, 2014**



**PROPORTION OF TOTAL GMHA EMERGENCY DEPARTMENT
PATIENTS WITH FLU/ILI SYMPTOMS - 2014 (3 WEEK MEAN)**



GUAM SENTINEL PHYSICIAN INFLUENZA SURVEILLANCE

REPORTS OF INFLUENZA OR INFLUENZA-LIKE ILLNESSES
RECEIVED FOR THE WEEK ENDING 6/7/14

Two cases reported by sentinel physicians

Bureau of Communicable Disease Control
Guam Department of Public Health & Social Services
H1N1 INFLUENZA SURVEILLANCE, WEEK 23, 2014
NO CASES OF H1N1 REPORTED FOR WEEK 23
Cumulative 2014: 0 civilian & 0 military cases

INFECTION CONTROL DEPARTMENT
 GUAM MEMORIAL HOSPITAL AUTHORITY
HOSPITALIZATIONS FOR INFLUENZA A BY AGE
AND MORBIDITY REPORTING WEEK

AGE	14	15	16	17	18	19	20	21	22	23	TOTAL
0-4											1
5-18											
19-24											
25-49											
50-64											1
65+											
TOTAL	0	0	0	0	0	0	0	0	0	0	2

Bureau of Communicable Disease Control
Guam Department of Public Health & Social Services
ISLAND-WIDE COMMUNICABLE DISEASE REPORT
 REPORTS RECEIVED FOR THE WEEK ENDING 6/7//2014

Chickenpox	1
<i>Chlamydia trachomatis</i>	27
<i>Clostridium difficile</i>	2
Conjunctivitis	29
Gonorrhea	2
Hepatitis A*	2
Hepatitis B*	2
Hepatitis C*	4
HPV	3
HSV 2	2
<i>Klebsiella pneumoniae</i> MDR	1
MRSA	12
RSV	1
<i>Salmonella</i>	1
Scabies	15
Streptococcal sore throat	16
Streptococcal disease, other	1
Syphilis	1
Tuberculosis	2

* Note: Reported Hepatitis A, B, and C cases include those not previously recorded in a Hepatitis Registry and may not represent recent infections.

INFECTION CONTROL DEPARTMENT
 GUAM MEMORIAL HOSPITAL AUTHORITY
**GMHA-EMERGENCY DEPARTMENT CLINICAL DIAGNOSES OF INFLUENZA OR FLU-
 SYNDROME BY WEEK AND PATIENT'S VILLAGE OF RESIDENCE, 2014**
 (Villages listed geographically from northern-most to southern-most)

VILLAGE	WEEK										TOTAL	2014 RATE
	14	15	16	17	18	19	20	21	22	23		
Yigo	3	2	2	1	3	0	1	0	1	2	28	134.93
Dededo	4	5	9	6	6	5	3	5	3	4	86	189.40
Tamuning	4	5	5	1	0	2	3	2	3	3	44	221.24
Barrigada	0	0	1	0	2	1	0	1	2	1	23	256.50
Mangilao	0	3	1	2	4	1	4	3	0	2	30	195.47
M-T-M	0	0	2	2	1	0	1	0	3	2	17	246.56
Hagatna	0	0	1	0	2	0	2	0	0	1	8	753.30
Agaña Hts	0	0	0	0	0	1	0	0	0	0	2	51.99
Sinajana	0	1	0	1	0	0	1	0	0	0	7	267.28
Chalan Pago-Ordot	1	1	1	0	1	0	0	1	0	0	10	145.10
Asan-Maina	0	0	0	0	0	0	0	1	2	0	3	138.95
Piti	0	0	0	0	0	0	0	0	0	0	2	136.15
Santa Rita	0	1	0	0	0	0	1	1	0	0	4	65.07
Agat	0	0	0	1	1	0	2	0	1	1	7	140.90
Yona	0	2	0	0	0	1	0	1	0	1	12	183.29
Talofof	0	0	1	0	1	2	0	0	0	0	9	292.11
Inarajan	0	1	0	0	1	0	0	1	0	0	5	217.77
Merizo	1	0	0	1	0	0	0	0	3	0	6	321.03
Umatac	0	0	1	0	0	1	0	0	0	0	3	379.75
Tourist	0	0	0	6	0	0	0	0	0	0	6	
Unknown	0	2	0	0	1	0	0	0	0	0	3	
TOTAL	15	23	24	17	24	14	18	16	18	17	317	196.89

NOTE: Rate = cases per 100,000 population for the specified period.

INFLUENZA/ILI ACTIVITY LEVEL - Widespread (More than half of villages affected)
 (ACTIVITY LEVELS: No activity, Sporadic, Local, Regional, Widespread)

GUAM ANIMAL DISEASE (ZONOSSES) REPORTS
 REPORTS RECEIVED FOR THE WEEK ENDING 5/31//2014

Anaplasmosis – 1 canine, Ehrlichiosis – 1 canine