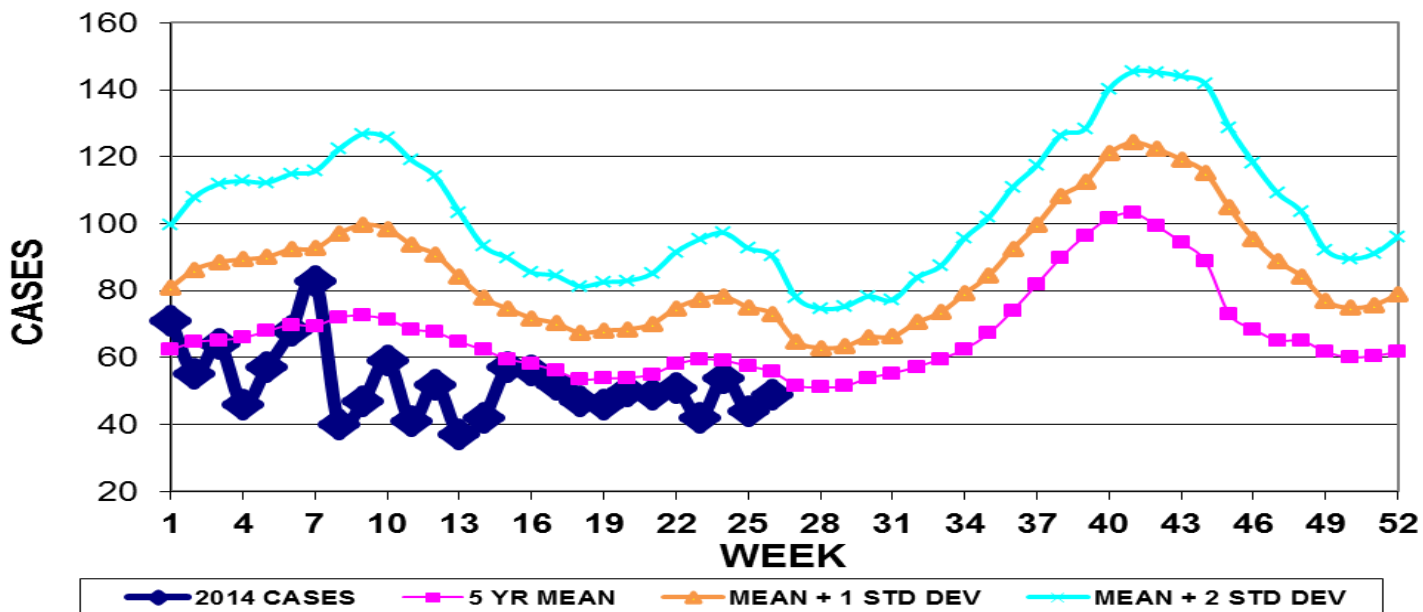


INFECTION CONTROL DEPARTMENT
 GUAM MEMORIAL HOSPITAL AUTHORITY
GUAM EPIDEMIOLOGY NEWSLETTER

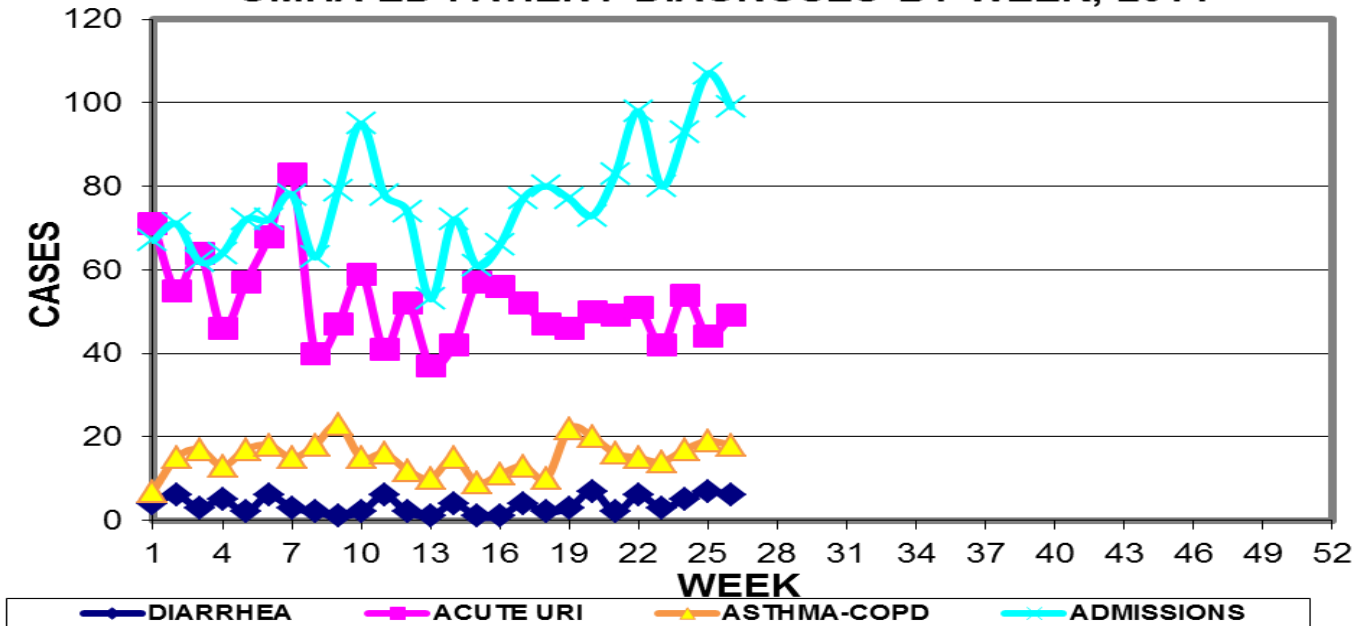
REPORT FOR WEEK ENDING: 6/28/2014 (Reporting week 2014-26)

GUAM REPORTS

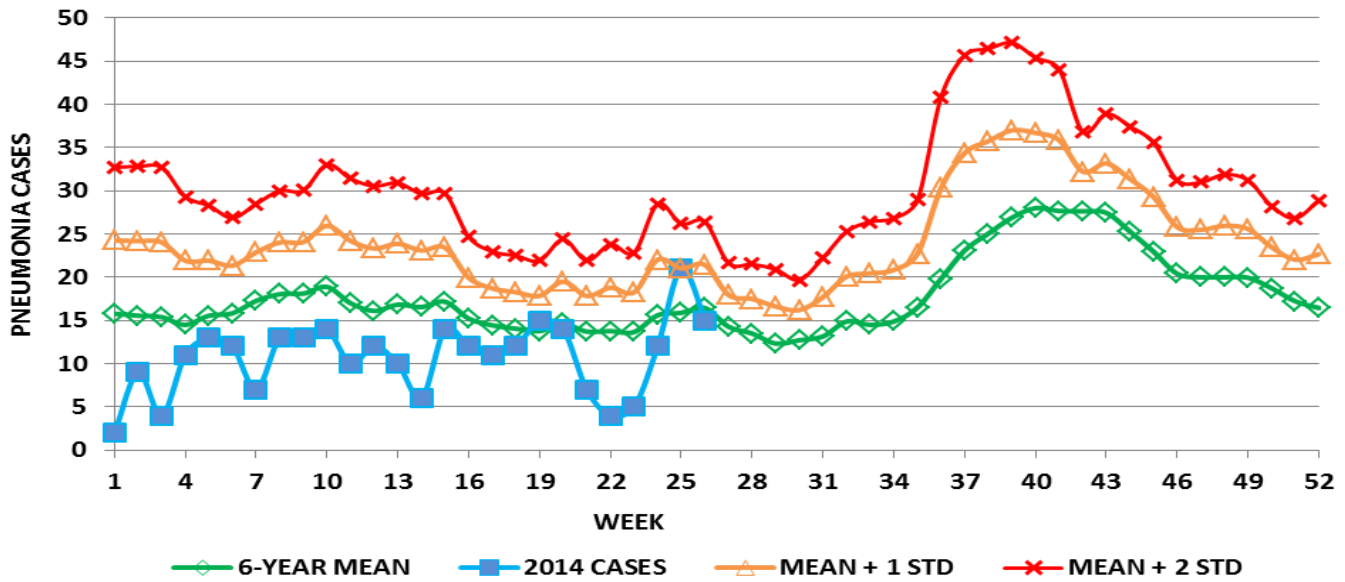
**GUAM ACUTE RESPIRATORY INFECTION SURVEILLANCE 2014;
 GMHA-EMERGENCY DEPARTMENT PATIENTS BY WEEK SEEN**



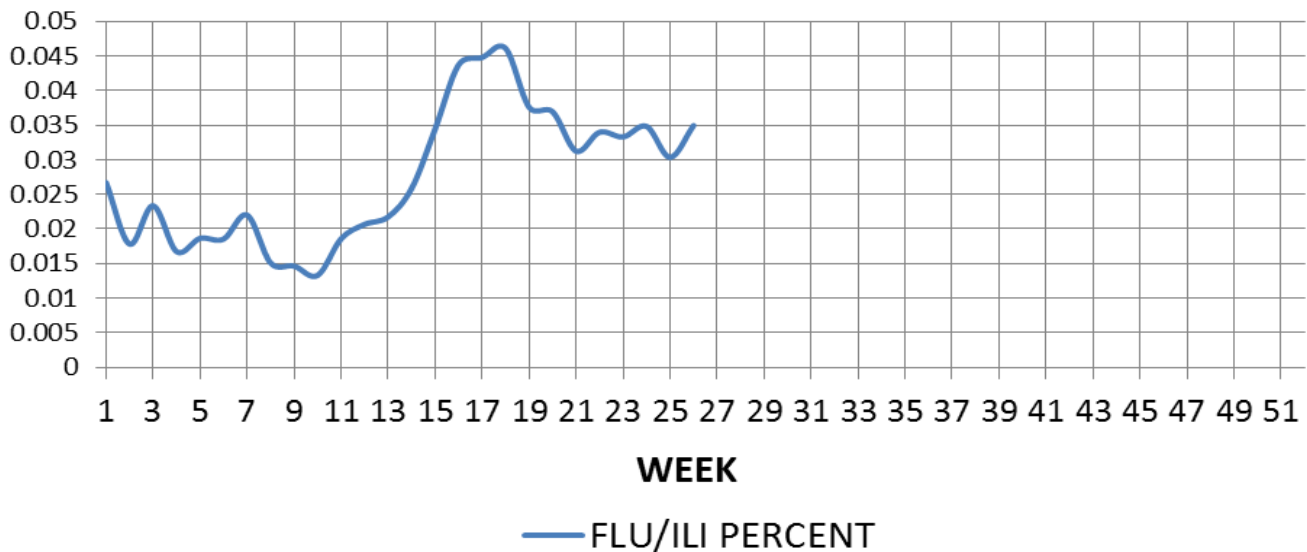
**GUAM SYNDROMIC DISEASE SURVEILLANCE
 GMHA-ED PATIENT DIAGNOSES BY WEEK, 2014**



**MEDICAL RECORDS AND INFECTION CONTROL DEPARTMENTS
GUAM MEMORIAL HOSPITAL AUTHORITY
HOSPITAL INPATIENT DISCHARGES WITH A DIAGNOSIS OF PNEUMONIA
BY WEEK DISCHARGED, 2014**



**PROPORTION OF TOTAL GMHA EMERGENCY DEPARTMENT
PATIENTS WITH FLU/ILI SYMPTOMS - 2014 (3 WEEK MEAN)**



GUAM SENTINEL PHYSICIAN INFLUENZA SURVEILLANCE

REPORTS OF INFLUENZA OR INFLUENZA-LIKE ILLNESSES

RECEIVED FOR THE WEEK ENDING 6/28/14

One case reported by sentinel physicians

Bureau of Communicable Disease Control

Guam Department of Public Health & Social Services

H1N1 INFLUENZA SURVEILLANCE, WEEK 26, 2014

NO CASES OF H1N1 REPORTED FOR WEEK 26

Cumulative 2014: 0 civilian & 0 military cases

INFECTION CONTROL DEPARTMENT

GUAM MEMORIAL HOSPITAL AUTHORITY

HOSPITALIZATIONS FOR INFLUENZA A BY AGE

AND MORBIDITY REPORTING WEEK

AGE	17	18	19	20	21	22	23	24	25	26	TOTAL
0-4											1
5-18											
19-24											
25-49											
50-64											1
65+											
TOTAL	0	0	0	0	0	0	0	0	0	0	2

Bureau of Communicable Disease Control

Guam Department of Public Health & Social Services

ISLAND-WIDE COMMUNICABLE DISEASE REPORT

REPORTS RECEIVED FOR THE WEEK ENDING 6/28//2014

Chickenpox	1
<i>Chlamydia trachomatis</i>	13
<i>Clostridium difficile</i>	1
Conjunctivitis	8
<i>E. coli</i> MDR	1
Gonorrhea	1
Hepatitis C	1
MRSA	15
RSV	1
Streptococcal sore throat	8
Syphilis	2
Tuberculosis	2
VRE	1

NOTE: Public Health currently has one operational FAX machine for submission of morbidity reports: 473-2104. If faxed to any other number, reports may not be received.

INFECTION CONTROL DEPARTMENT
 GUAM MEMORIAL HOSPITAL AUTHORITY
**GMHA-EMERGENCY DEPARTMENT CLINICAL DIAGNOSES OF INFLUENZA OR FLU-
 SYNDROME BY WEEK AND PATIENT'S VILLAGE OF RESIDENCE, 2014**
 (Villages listed geographically from northern-most to southern-most)

VILLAGE	WEEK										TOTAL	2014 RATE
	17	18	19	20	21	22	23	24	25	26		
Yigo	1	3	0	1	0	1	2	0	3	2	33	159.03
Dededo	6	6	5	3	5	3	4	6	4	5	101	222.44
Tamuning	1	0	2	3	2	3	3	2	0	5	51	256.44
Barrigada	0	2	1	0	1	2	1	1	2	4	30	334.56
Mangilao	2	4	1	4	3	0	2	3	0	3	36	234.56
M-T-M	2	1	0	1	0	3	2	2	0	0	19	275.56
Hagatna	0	2	0	2	0	0	1	0	0	0	8	753.30
Agaña Hts	0	0	1	0	0	0	0	1	1	0	4	103.98
Sinajana	1	0	0	1	0	0	0	0	0	1	8	305.46
Chalan Pago-Ordot	0	1	0	0	1	0	0	1	1	0	12	174.11
Asan-Maina	0	0	0	0	1	2	0	0	0	0	3	138.95
Piti	0	0	0	0	0	0	0	0	0	0	2	136.15
Santa Rita	0	0	0	1	1	0	0	0	1	0	5	81.34
Agat	1	1	0	2	0	1	1	1	0	2	10	201.29
Yona	0	0	1	0	1	0	1	2	1	0	15	229.11
Talofofo	0	1	2	0	0	0	0	0	0	1	10	324.57
Inarajan	0	1	0	0	1	0	0	0	0	0	5	217.77
Merizo	1	0	0	0	0	3	0	1	0	0	7	374.53
Umatac	0	0	1	0	0	0	0	0	0	0	3	379.75
Tourist	6	0	0	0	0	0	0	2	0	0	8	
Unknown	0	1	0	0	0	0	0	0	0	0	3	
TOTAL	17	24	14	18	16	18	17	22	13	23	375	232.92

NOTE: Rate = cases per 100,000 population for the specified period.

INFLUENZA/ILI ACTIVITY LEVEL - Regional (Less than half of villages affected)
 (ACTIVITY LEVELS: No activity, Sporadic, Local, Regional, Widespread)

GUAM ANIMAL DISEASE (ZONOSSES) REPORTS
 REPORTS RECEIVED FOR THE WEEK ENDING 6/28//2014

No reports