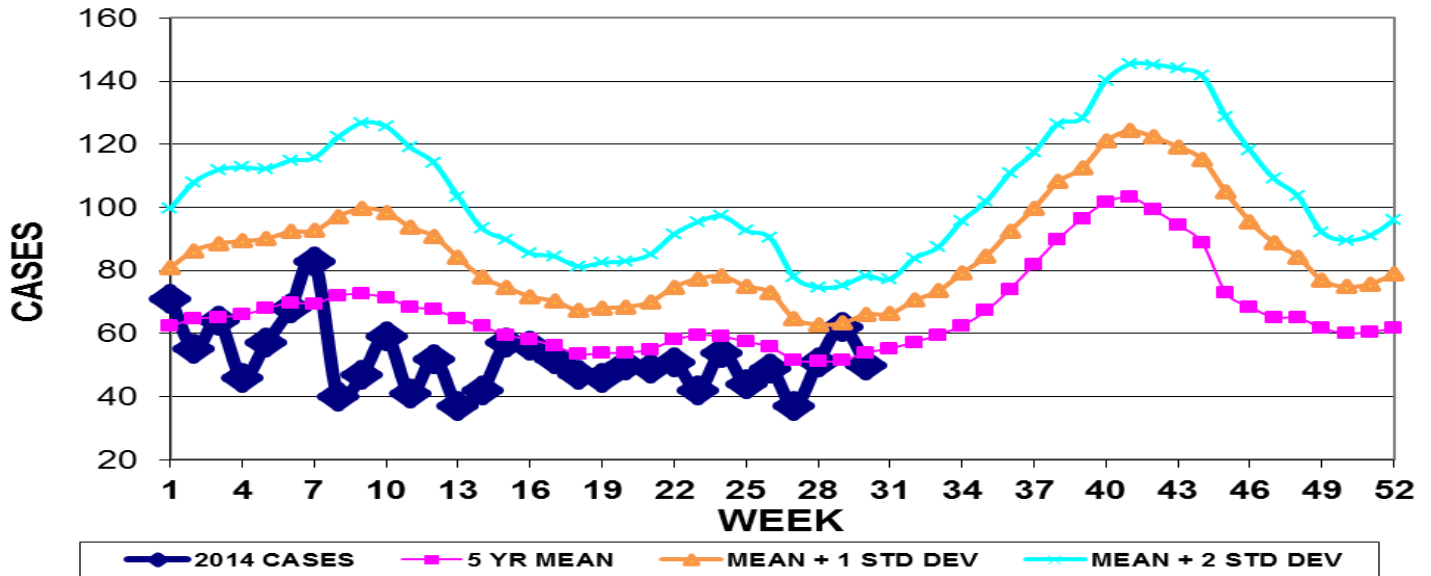


INFECTION CONTROL DEPARTMENT
 GUAM MEMORIAL HOSPITAL AUTHORITY
GUAM EPIDEMIOLOGY NEWSLETTER

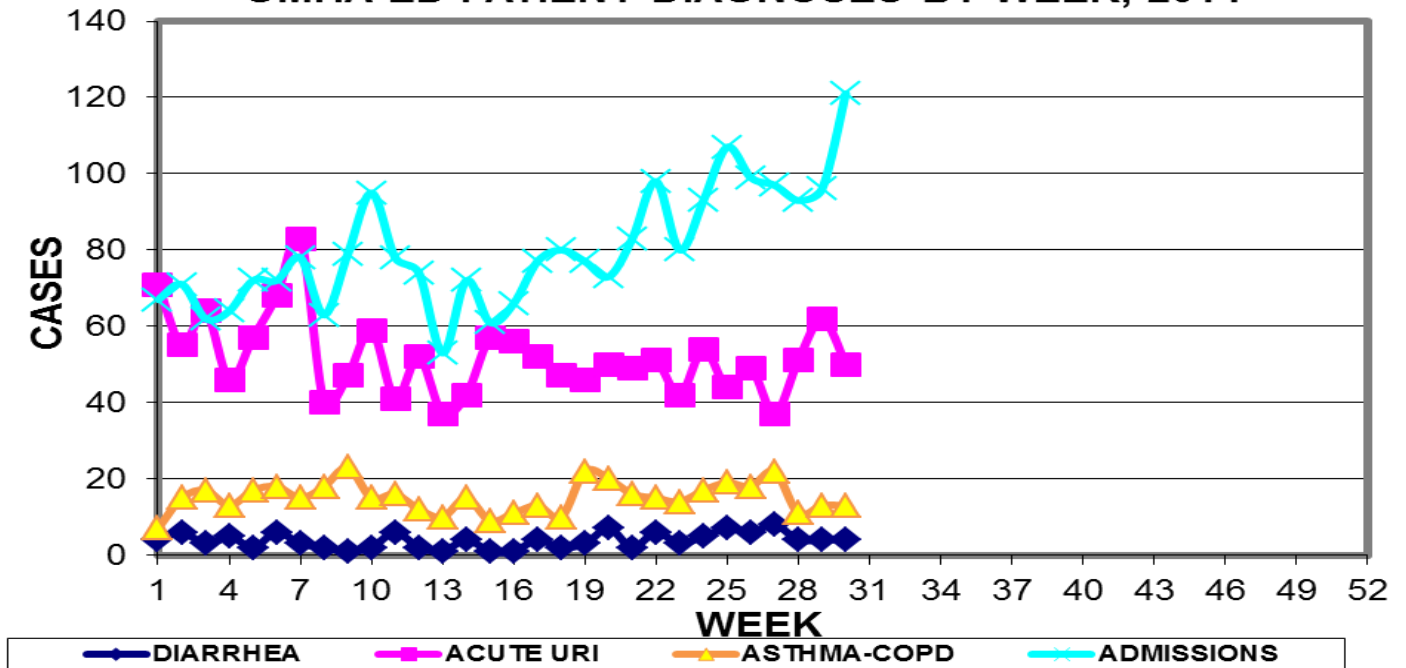
REPORT FOR WEEK ENDING: 7/26/2014 (Reporting week 2014-30)

GUAM REPORTS

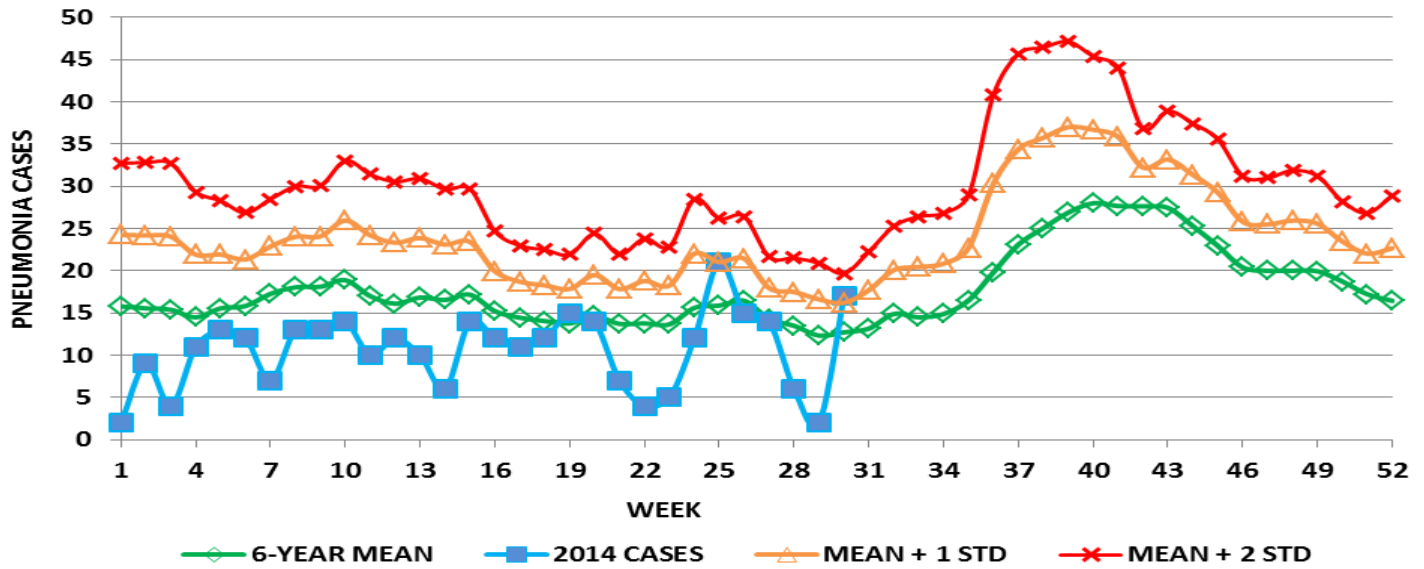
**GUAM ACUTE RESPIRATORY INFECTION SURVEILLANCE 2014;
 GMHA-EMERGENCY DEPARTMENT PATIENTS BY WEEK SEEN**



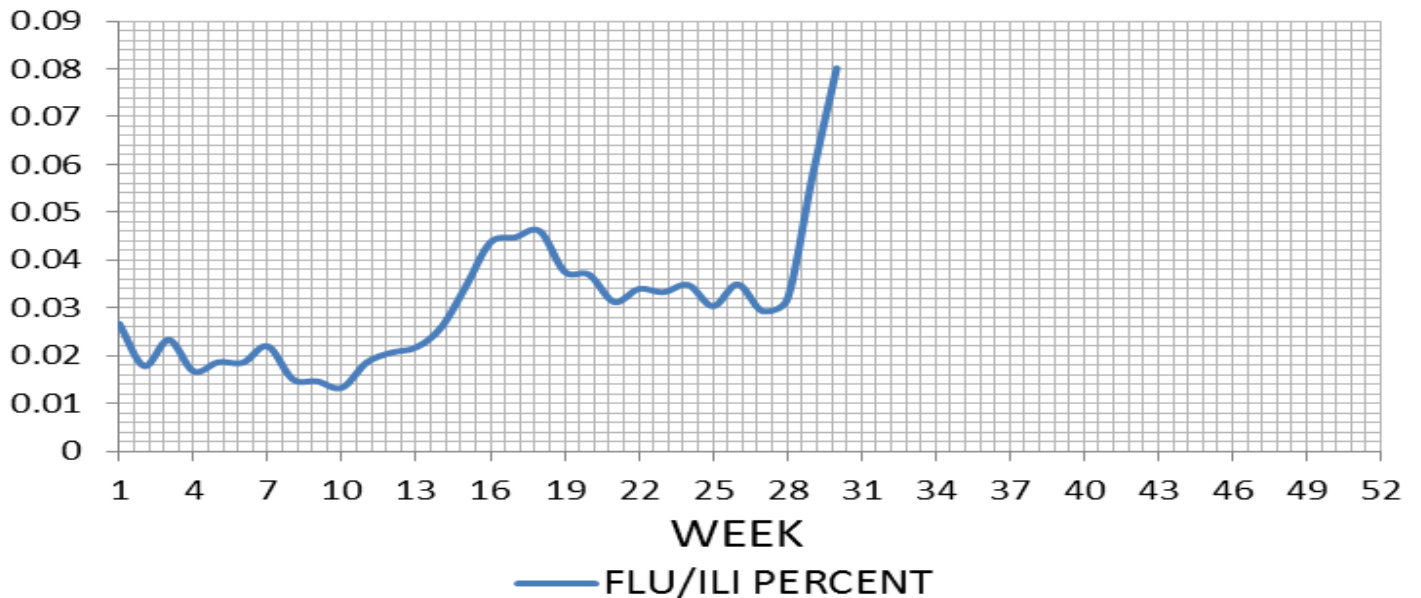
**GUAM SYNDROMIC DISEASE SURVEILLANCE
 GMHA-ED PATIENT DIAGNOSES BY WEEK, 2014**



**MEDICAL RECORDS AND INFECTION CONTROL DEPARTMENTS
GUAM MEMORIAL HOSPITAL AUTHORITY
HOSPITAL INPATIENT DISCHARGES WITH A DIAGNOSIS OF PNEUMONIA
BY WEEK DISCHARGED, 2014**



**PERCENT OF TOTAL PATIENTS DIAGNOSED WITH
FLU/ILI BY WEEK, GMHA-ED, 2014**



GUAM SENTINEL PHYSICIAN INFLUENZA SURVEILLANCE

REPORTS OF INFLUENZA OR INFLUENZA-LIKE ILLNESSES

RECEIVED FOR THE WEEK ENDING 7/26/14

Five cases reported by sentinel physicians

Bureau of Communicable Disease Control

Guam Department of Public Health & Social Services

H1N1 INFLUENZA SURVEILLANCE, WEEK 30, 2014

NO CASES OF H1N1 REPORTED FOR WEEK 30

Cumulative 2014: 0 civilian & 0 military cases

INFECTION CONTROL DEPARTMENT

GUAM MEMORIAL HOSPITAL AUTHORITY

HOSPITALIZATIONS FOR INFLUENZA A BY AGE

AND MORBIDITY REPORTING WEEK

AGE	21	22	23	24	25	26	27	28	29	30	TOTAL
0-4											1
5-18											
19-24											
25-49											
50-64											1
65+											
TOTAL	0	0	0	0	0	0	0	0	0	0	2

Bureau of Communicable Disease Control

Guam Department of Public Health & Social Services

ISLAND-WIDE COMMUNICABLE DISEASE REPORT

REPORTS RECEIVED FOR THE WEEK ENDING 7/19/2014

<i>Campylobacter jejuni</i>	1
Chickenpox	1
<i>Chlamydia trachomatis</i>	30
Conjunctivitis	12

<p>WEEK 30 UPDATE DELAYED DUE TO TROPICAL STORM HALONG</p>

<i>Salmonella</i>	1
Scabies	11
Streptococcal sore throat	4
Streptococcal disease, other	2
Syphilis, Congenital	1
Syphilis, Latent	1
Tetanus	1
VRE	1

NOTE: Public Health currently has one operational FAX machine for submission of morbidity reports: 473-2104. If faxed to any other number, reports may not be received.

INFECTION CONTROL DEPARTMENT
 GUAM MEMORIAL HOSPITAL AUTHORITY
**GMHA-EMERGENCY DEPARTMENT CLINICAL DIAGNOSES OF INFLUENZA OR FLU-
 SYNDROME BY WEEK AND PATIENT'S VILLAGE OF RESIDENCE, 2014**
 (Villages listed geographically from northern-most to southern-most)

VILLAGE	WEEK										TOTAL	2014 RATE
	21	22	23	24	25	26	27	28	29	30		
Yigo	0	1	2	0	3	2	2	2	1	1	39	187.94
Dededo	5	3	4	6	4	5	3	4	5	3	116	255.47
Tamuning	2	3	3	2	0	5	1	3	3	2	60	301.69
Barrigada	1	2	1	1	2	4	1	0	1	1	33	368.02
Mangilao	3	0	2	3	0	3	1	4	9	1	50	325.78
M-T-M	0	3	2	2	0	0	0	1	2	1	23	333.58
Hagatna	0	0	1	0	0	0	1	0	1	0	10	941.62
Agaña Hts	0	0	0	1	1	0	0	0	0	0	4	103.98
Sinajana	0	0	0	0	0	1	0	0	0	0	8	305.46
Chalan Pago-Ordot	1	0	0	1	1	0	1	1	2	0	16	232.15
Asan-Maina	1	2	0	0	0	0	0	0	0	0	3	138.95
Piti	0	0	0	0	0	0	0	0	0	0	2	136.15
Santa Rita	1	0	0	0	1	0	0	0	0	0	5	81.34
Agat	0	1	1	1	0	2	0	0	0	1	11	221.42
Yona	1	0	1	2	1	0	1	1	2	1	20	305.48
Talofof	0	0	0	0	0	1	0	0	1	0	11	357.03
Inarajan	1	0	0	0	0	0	1	0	1	0	7	304.88
Merizo	0	3	0	1	0	0	0	0	0	1	8	428.04
Umatac	0	0	0	0	0	0	0	0	0	0	3	379.75
Tourist	0	0	0	2	0	0	0	0	0	0	8	
Unknown	0	0	0	0	0	0	0	0	0	0	3	
TOTAL	16	18	17	22	13	23	12	16	28	12	443	275.15

NOTE: Rate = cases per 100,000 population for the specified period.

INFLUENZA/ILI ACTIVITY LEVEL - Widespread (More than half of villages affected)
 (ACTIVITY LEVELS: No activity, Sporadic, Local, Regional, Widespread)

GUAM ANIMAL DISEASE (ZONOSSES) REPORTS
 REPORTS RECEIVED FOR THE WEEK ENDING 7/26/2014

Ehrlichiosis - 1 canine