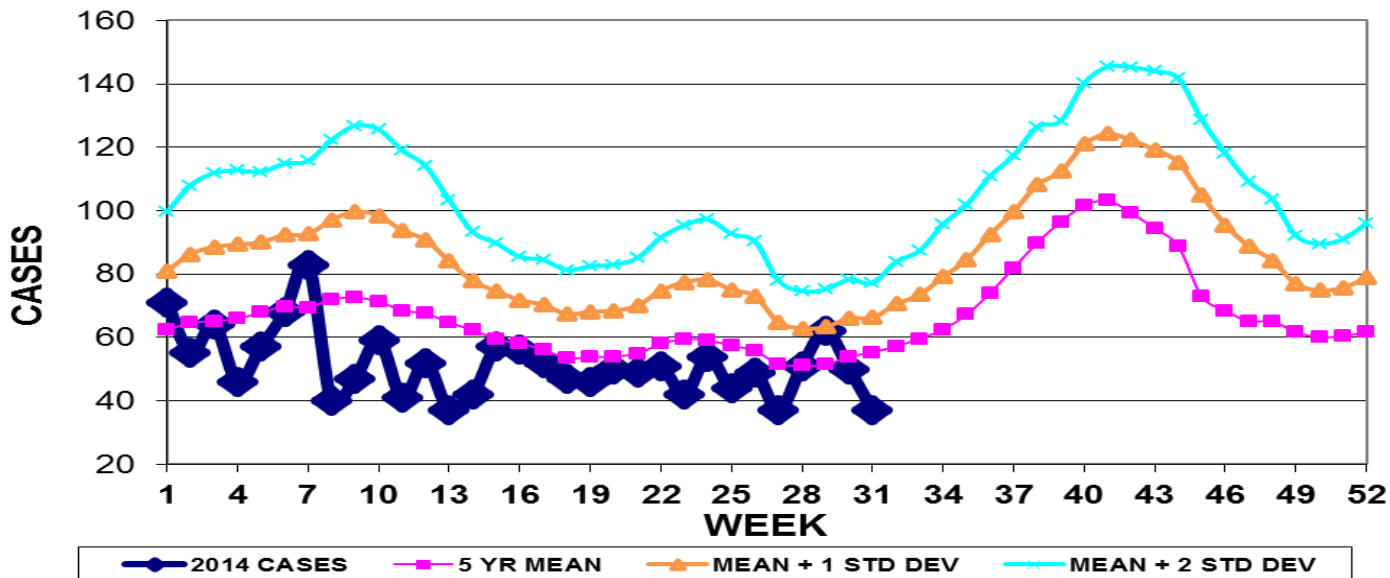


INFECTION CONTROL DEPARTMENT  
 GUAM MEMORIAL HOSPITAL AUTHORITY  
**GUAM EPIDEMIOLOGY NEWSLETTER**

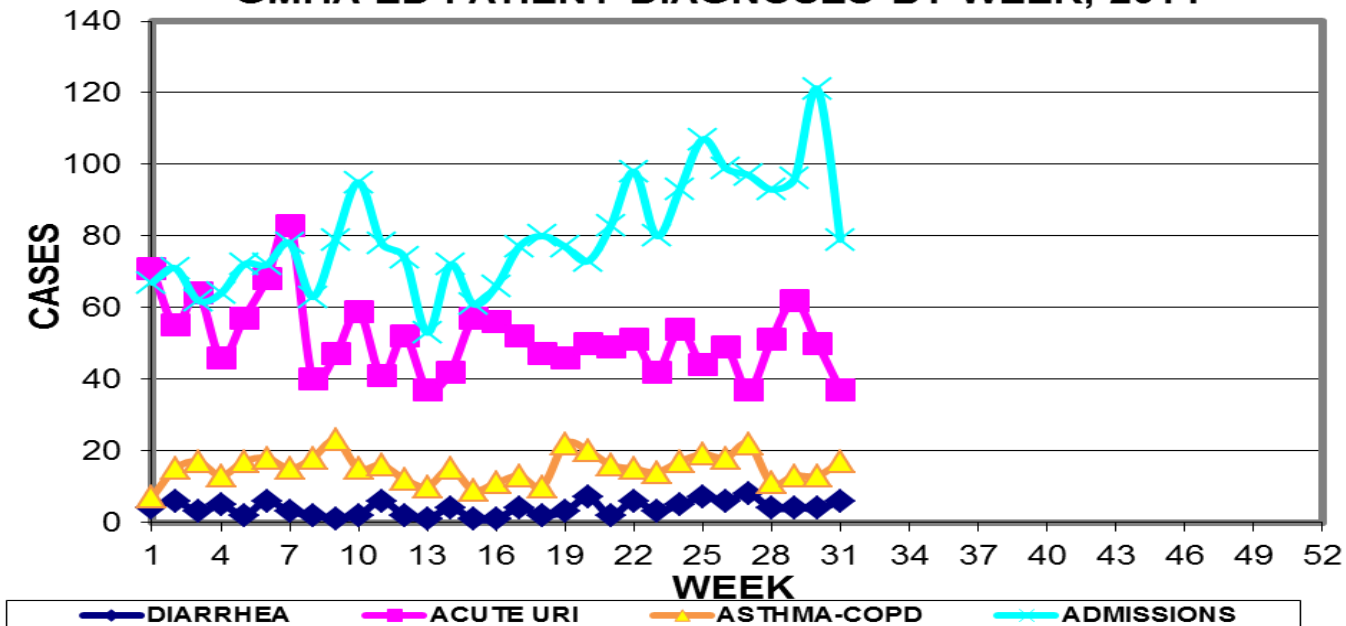
REPORT FOR WEEK ENDING: 8/2/2014 (Reporting week 2014-31)

**GUAM REPORTS**

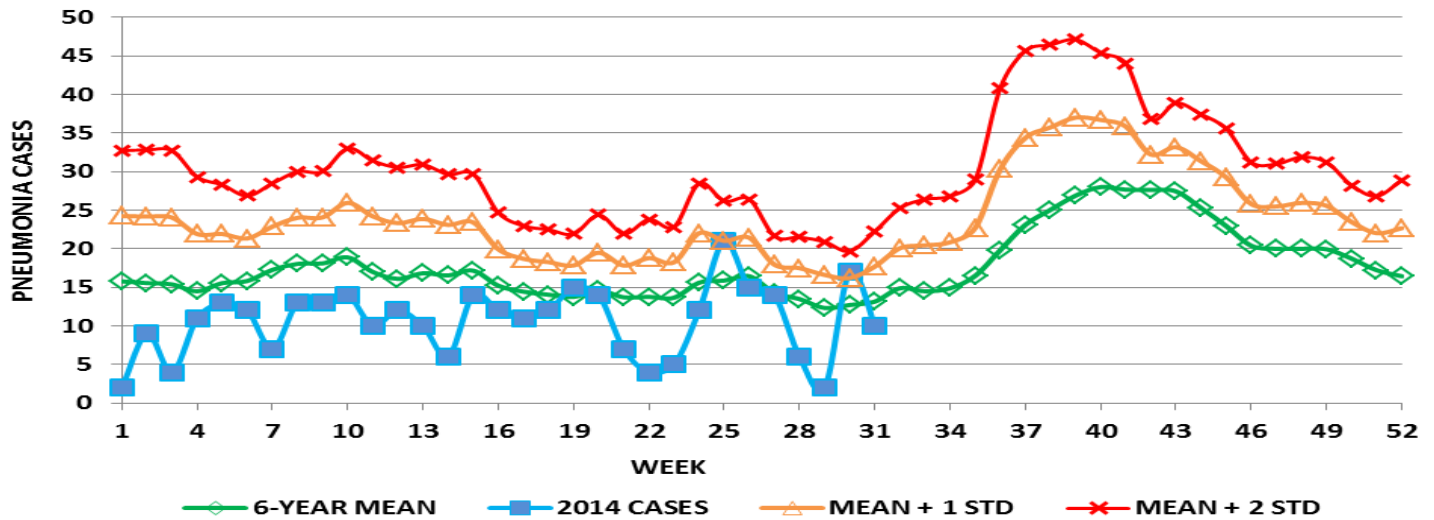
**GUAM ACUTE RESPIRATORY INFECTION SURVEILLANCE 2014;  
 GMHA-EMERGENCY DEPARTMENT PATIENTS BY WEEK SEEN**



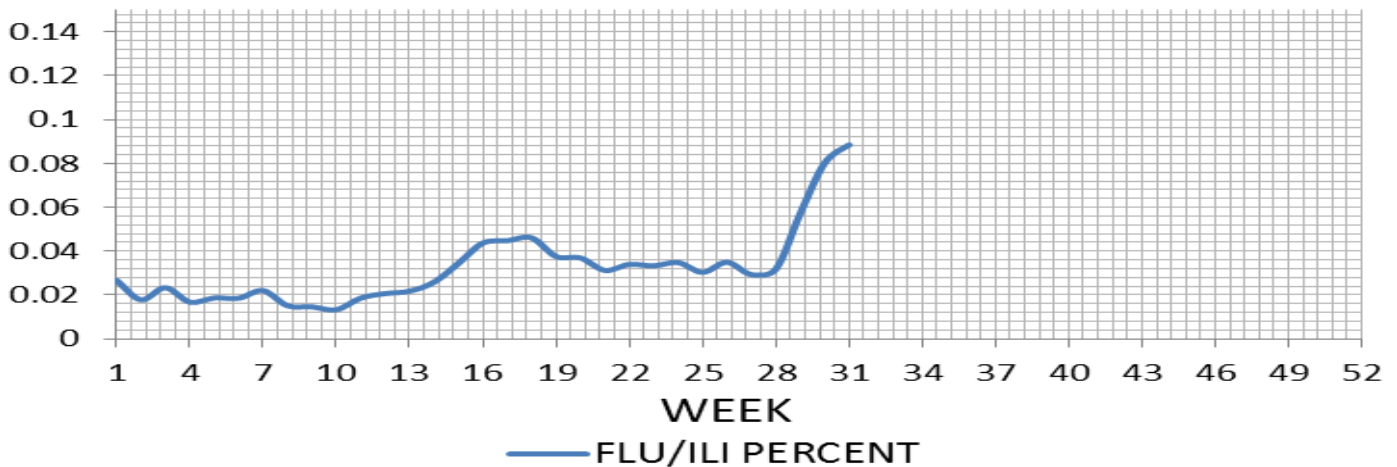
**GUAM SYNDROMIC DISEASE SURVEILLANCE  
 GMHA-ED PATIENT DIAGNOSES BY WEEK, 2014**



**MEDICAL RECORDS AND INFECTION CONTROL DEPARTMENTS  
GUAM MEMORIAL HOSPITAL AUTHORITY  
HOSPITAL INPATIENT DISCHARGES WITH A DIAGNOSIS OF PNEUMONIA  
BY WEEK DISCHARGED, 2014**



**PERCENT OF TOTAL PATIENTS DIAGNOSED WITH  
FLU/ILI BY WEEK, GMHA-ED, 2014  
(3-week smoothed)**



**GUAM SENTINEL PHYSICIAN INFLUENZA SURVEILLANCE**  
 REPORTS OF INFLUENZA OR INFLUENZA-LIKE ILLNESSES  
 RECEIVED FOR THE WEEK ENDING 8/2/14  
 Ten cases reported by sentinel physicians

Bureau of Communicable Disease Control  
**Guam Department of Public Health & Social Services**  
**H1N1 INFLUENZA SURVEILLANCE, WEEK 31, 2014**  
**NO CASES OF H1N1 REPORTED FOR WEEK 31**  
**Cumulative 2014: 0 civilian & 0 military cases**

INFECTION CONTROL DEPARTMENT  
 GUAM MEMORIAL HOSPITAL AUTHORITY  
**HOSPITALIZATIONS FOR INFLUENZA A BY AGE**  
**AND MORBIDITY REPORTING WEEK**

AGE	22	23	24	25	26	27	28	29	30	31	TOTAL
0-4											1
5-18											
19-24											
25-49											
50-64											1
65+											
TOTAL	0	0	0	0	0	0	0	0	0	0	2

Bureau of Communicable Disease Control  
**Guam Department of Public Health & Social Services**  
**ISLAND-WIDE COMMUNICABLE DISEASE REPORT**  
 REPORTS RECEIVED FOR THE WEEK ENDING 7/26/2014

<i>Chlamydia trachomatis</i>	11
Conjunctivitis	2
E. coli MDR, ESBL+	2
<i>Klebsiella pneumoniae</i> MDR, ESBL+	3
MRSA	7
Mumps	2
<i>Salmonella</i>	1
Scabies	15
Streptococcal sore throat	7
Streptococcal disease, other	2

REPORTS RECEIVED FOR THE WEEK ENDING 8/2/2014

Chickenpox	1
<i>Chlamydia trachomatis</i>	9
Conjunctivitis	1
Hepatitis C	1
MRSA	1
Scabies	7

□

**NOTE: Public Health currently has one operational FAX machine for submission of morbidity reports: 473-2104. If faxed to any other number, reports may not be received.**

INFECTION CONTROL DEPARTMENT  
 GUAM MEMORIAL HOSPITAL AUTHORITY  
**GMHA-EMERGENCY DEPARTMENT CLINICAL DIAGNOSES OF INFLUENZA OR FLU-  
 SYNDROME BY WEEK AND PATIENT'S VILLAGE OF RESIDENCE, 2014**  
 (Villages listed geographically from northern-most to southern-most)

VILLAGE	WEEK										TOTAL	2014 RATE
	22	23	24	25	26	27	28	29	30	31		
Yigo	1	2	0	3	2	2	2	1	1	0	39	187.94
Dededo	3	4	6	4	5	3	4	5	3	4	120	264.28
Tamuning	3	3	2	0	5	1	3	3	2	2	62	311.75
Barrigada	2	1	1	2	4	1	0	1	1	1	34	379.14
Mangilao	0	2	3	0	3	1	4	9	1	2	53	345.32
M-T-M	3	2	2	0	0	0	1	2	1	2	25	362.58
Hagatna	0	1	0	0	0	1	0	1	0	0	10	941.62
Agaña Hts	0	0	1	1	0	0	0	0	0	0	4	103.98
Sinajana	0	0	0	0	1	0	0	0	0	0	8	305.46
Chalan Pago-Ordot	0	0	1	1	0	1	1	2	0	0	16	232.15
Asan-Maina	2	0	0	0	0	0	0	0	0	0	3	138.95
Piti	0	0	0	0	0	0	0	0	0	0	2	136.15
Santa Rita	0	0	0	1	0	0	0	0	0	0	5	81.34
Agat	1	1	1	0	2	0	0	0	1	0	11	221.42
Yona	0	1	2	1	0	1	1	2	1	2	22	336.03
Talofofo	0	0	0	0	1	0	0	1	0	0	11	357.03
Inarajan	0	0	0	0	0	1	0	1	0	0	7	304.88
Merizo	3	0	1	0	0	0	0	0	1	0	8	428.04
Umatac	0	0	0	0	0	0	0	0	0	0	3	379.75
Tourist	0	0	2	0	0	0	0	0	0	0	8	
Unknown	0	0	0	0	0	0	0	0	0	0	3	
<b>TOTAL</b>	<b>18</b>	<b>17</b>	<b>22</b>	<b>13</b>	<b>23</b>	<b>12</b>	<b>16</b>	<b>28</b>	<b>12</b>	<b>13</b>	<b>456</b>	<b>283.23</b>

NOTE: Rate = cases per 100,000 population for the specified period.

INFLUENZA/ILI ACTIVITY LEVEL - Regional (Less than half of villages affected)  
 (ACTIVITY LEVELS: No activity, Sporadic, Local, Regional, Widespread)

**GUAM ANIMAL DISEASE (ZOOSES) REPORTS**  
 REPORTS RECEIVED FOR THE WEEK ENDING 8/2/2014

Ehrlichiosis - 1 canine