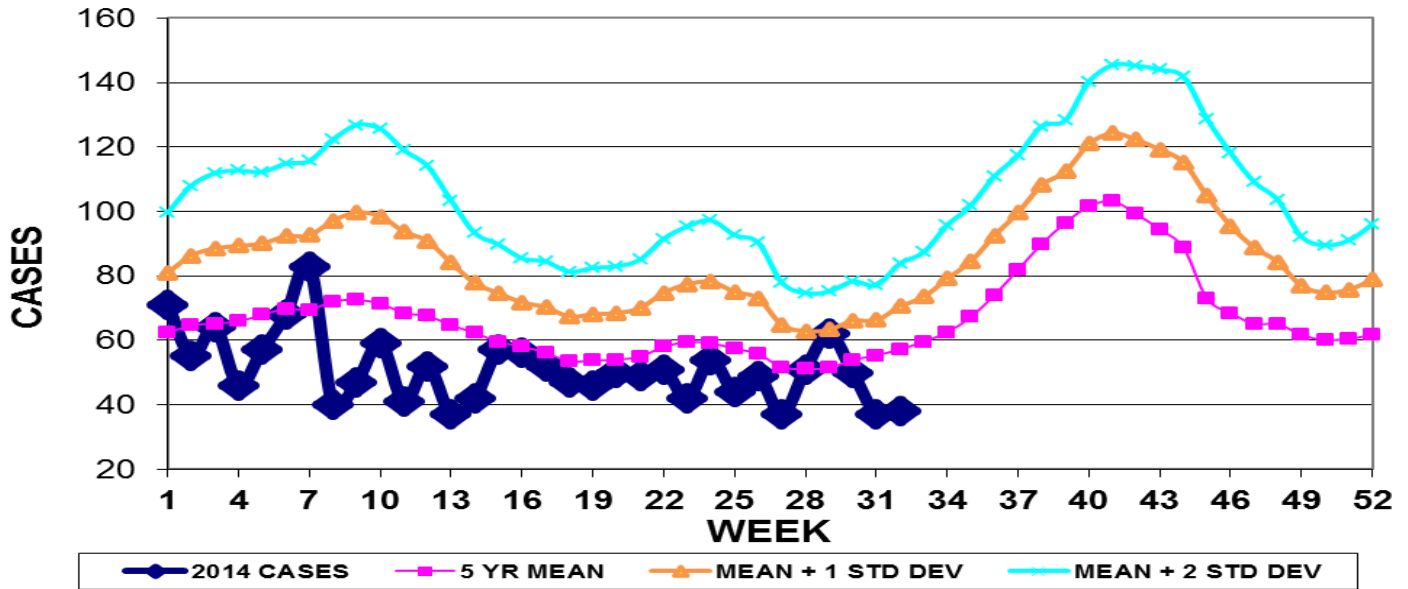


INFECTION CONTROL DEPARTMENT  
 GUAM MEMORIAL HOSPITAL AUTHORITY  
**GUAM EPIDEMIOLOGY NEWSLETTER**

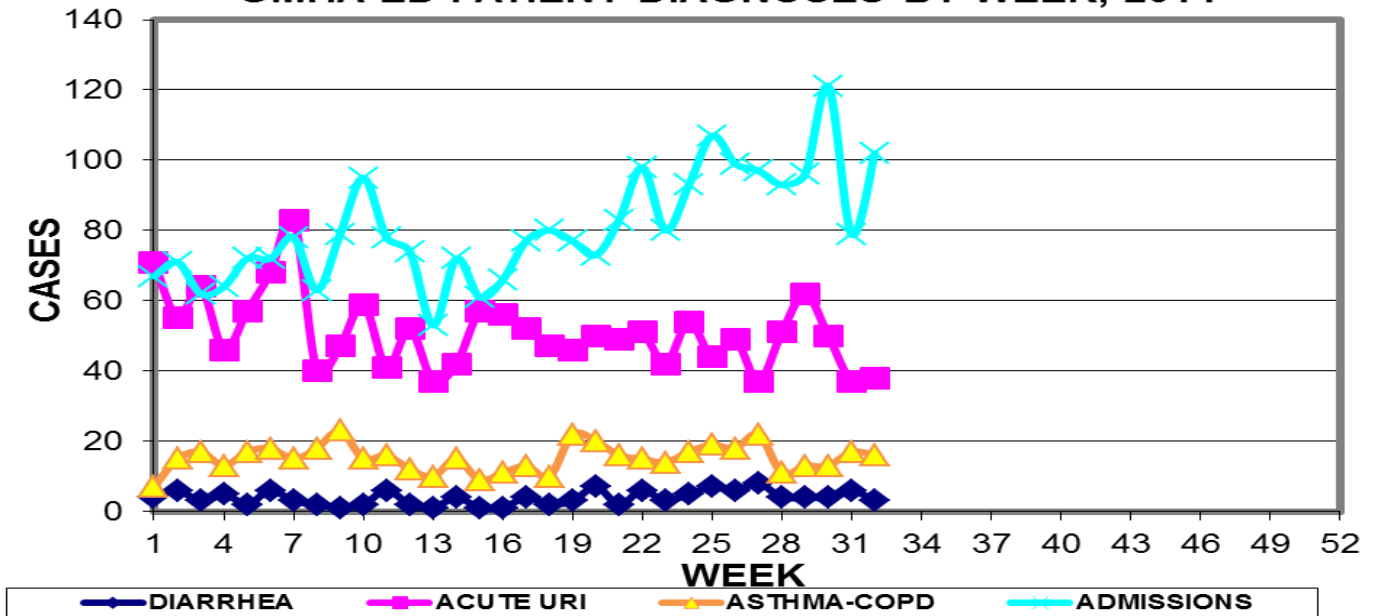
REPORT FOR WEEK ENDING: 8/9/2014 (Reporting week 2014-32)

**GUAM REPORTS**

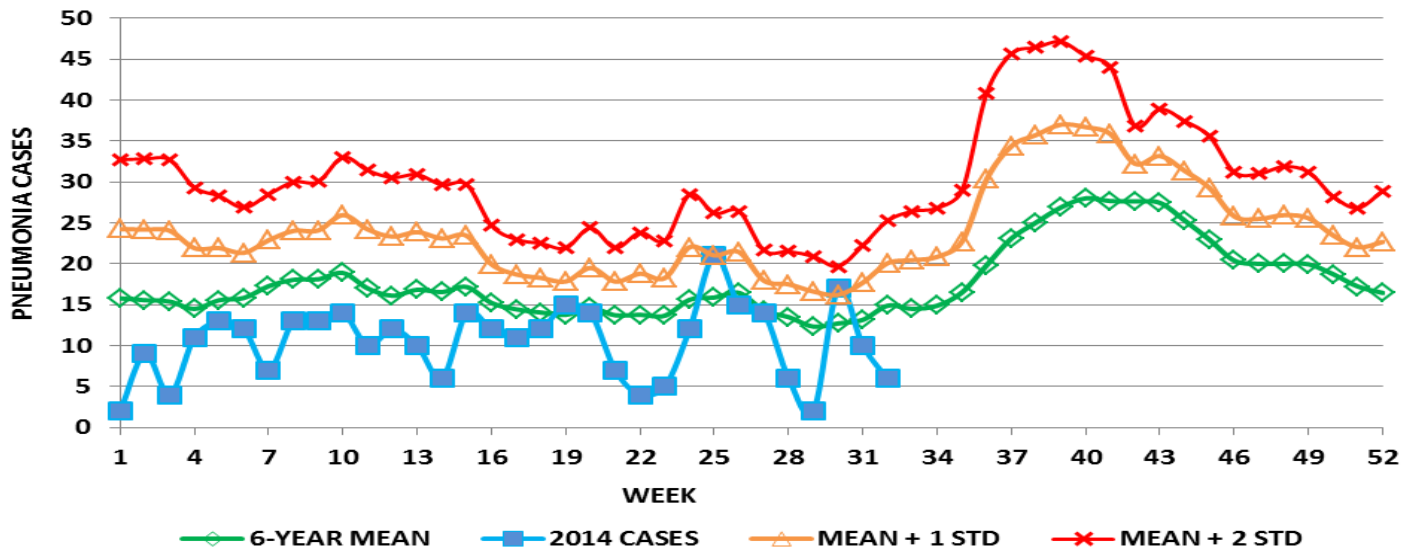
**GUAM ACUTE RESPIRATORY INFECTION SURVEILLANCE 2014;  
 GMHA-EMERGENCY DEPARTMENT PATIENTS BY WEEK SEEN**



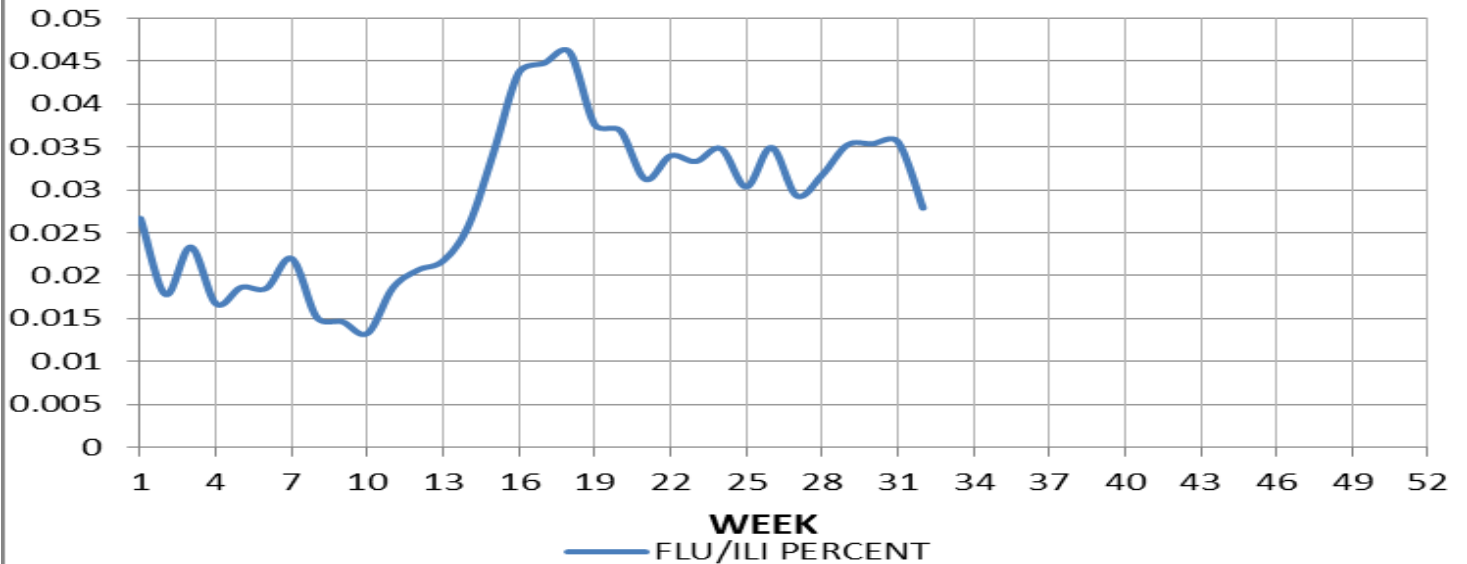
**GUAM SYNDROMIC DISEASE SURVEILLANCE  
 GMHA-ED PATIENT DIAGNOSES BY WEEK, 2014**



**MEDICAL RECORDS AND INFECTION CONTROL DEPARTMENTS  
 GUAM MEMORIAL HOSPITAL AUTHORITY  
 HOSPITAL INPATIENT DISCHARGES WITH A DIAGNOSIS OF PNEUMONIA  
 BY WEEK DISCHARGED, 2014**



**FLU/ILI AS A PERCENT OF TOTAL  
 PATIENTS SEEN, GMHA-ED, 2014  
 (3-WEEK SMOOTHED)**



**GUAM SENTINEL PHYSICIAN INFLUENZA SURVEILLANCE**  
 REPORTS OF INFLUENZA OR INFLUENZA-LIKE ILLNESSES  
 RECEIVED FOR THE WEEK ENDING 8/9/14  
 Eight cases reported by sentinel physicians

Bureau of Communicable Disease Control  
 Guam Department of Public Health & Social Services  
**H1N1 INFLUENZA SURVEILLANCE, WEEK 32, 2014**  
 NO CASES OF H1N1 REPORTED FOR WEEK 32  
**Cumulative 2014: 0 civilian & 0 military cases**

INFECTION CONTROL DEPARTMENT  
 GUAM MEMORIAL HOSPITAL AUTHORITY  
**HOSPITALIZATIONS FOR INFLUENZA A BY AGE**  
**AND MORBIDITY REPORTING WEEK**

<b>AGE</b>	<b>23</b>	<b>24</b>	<b>25</b>	<b>26</b>	<b>27</b>	<b>28</b>	<b>29</b>	<b>30</b>	<b>31</b>	<b>32</b>	<b>TOTAL</b>
0-4											1
5-18											
19-24											
25-49											
50-64											1
65+											
<b>TOTAL</b>	<b>0</b>	<b>0</b>	<b>0</b>	<b>0</b>	<b>0</b>	<b>0</b>	<b>0</b>	<b>0</b>	<b>0</b>	<b>0</b>	<b>2</b>

Bureau of Communicable Disease Control  
 Guam Department of Public Health & Social Services  
**ISLAND-WIDE COMMUNICABLE DISEASE REPORT**

REPORTS RECEIVED FOR THE WEEK ENDING 8/9/2014

<i>Acinetobacter baumani</i>	1
<i>Chlamydia trachomatis</i>	12
<i>Clostridium difficile</i>	1
Conjunctivitis	14
<i>E. coli</i> MDR	4
Hand, foot, & mouth disease	1
Hepatitis B	1
<i>Klebsiella pneumoniae</i>	3
MRSA	12
RSV	1
Scabies	1
Streptococcal disease (other than SST)	2
Syphilis, congenital	1

□

**NOTE: Public Health currently has one operational FAX machine for submission of morbidity reports: 473-2104. If faxed to any other number, reports may not be received.**

INFECTION CONTROL DEPARTMENT  
 GUAM MEMORIAL HOSPITAL AUTHORITY  
**GMHA-EMERGENCY DEPARTMENT CLINICAL DIAGNOSES OF INFLUENZA OR FLU-  
 SYNDROME BY WEEK AND PATIENT'S VILLAGE OF RESIDENCE, 2014**  
 (Villages listed geographically from northern-most to southern-most)

VILLAGE	WEEK										TOTAL	2014 RATE
	23	24	25	26	27	28	29	30	31	32		
Yigo	2	0	3	2	2	2	1	1	0	3	42	202.40
Dededo	4	6	4	5	3	4	5	3	4	7	127	279.70
Tamuning	3	2	0	5	1	3	3	2	2	0	62	311.75
Barrigada	1	1	2	4	1	0	1	1	1	0	34	379.14
Mangilao	2	3	0	3	1	4	9	1	2	3	56	364.87
M-T-M	2	2	0	0	0	1	2	1	2	1	26	377.08
Hagatna	1	0	0	0	1	0	1	0	0	0	10	941.62
Agaña Hts	0	1	1	0	0	0	0	0	0	0	4	103.98
Sinajana	0	0	0	1	0	0	0	0	0	0	8	305.46
Chalan Pago-Ordot	0	1	1	0	1	1	2	0	0	0	16	232.15
Asan-Maina	0	0	0	0	0	0	0	0	0	0	3	138.95
Piti	0	0	0	0	0	0	0	0	0	0	2	136.15
Santa Rita	0	0	1	0	0	0	0	0	0	0	5	81.34
Agat	1	1	0	2	0	0	0	1	0	0	11	221.42
Yona	1	2	1	0	1	1	2	1	2	1	23	351.31
Talofof	0	0	0	1	0	0	1	0	0	1	12	389.48
Inarajan	0	0	0	0	1	0	1	0	0	0	7	304.88
Merizo	0	1	0	0	0	0	0	1	0	0	8	428.04
Umatac	0	0	0	0	0	0	0	0	0	0	3	379.75
Tourist	0	2	0	0	0	0	0	0	0	0	8	
Unknown	0	0	0	0	0	0	0	0	0	0	3	
<b>TOTAL</b>	<b>17</b>	<b>22</b>	<b>13</b>	<b>23</b>	<b>12</b>	<b>16</b>	<b>28</b>	<b>12</b>	<b>13</b>	<b>16</b>	<b>472</b>	<b>293.17</b>

NOTE: Rate = cases per 100,000 population for the specified period.

INFLUENZA/ILI ACTIVITY LEVEL - Regional (Less than half of villages affected)  
 (ACTIVITY LEVELS: No activity, Sporadic, Local, Regional, Widespread)

**GUAM ANIMAL DISEASE (ZONOSSES) REPORTS**  
 REPORTS RECEIVED FOR THE WEEK ENDING 8/9/2014

Babesiosis - 1 canine

# WHO Statement on the Meeting of the International Health Regulations Emergency Committee Regarding the 2014 Ebola Outbreak in West Africa

WHO Statement 8 August 2014

## RECOMMENDATIONS FOR ALL COUNTRIES

- There should be no general ban on international travel or trade; restrictions outlined in these recommendations regarding the travel of EVD cases and contacts should be implemented.
- States should provide travelers to Ebola affected and at-risk areas with relevant information on risks, measures to minimize those risks, and advice for managing a potential exposure.
- States should be prepared to detect, investigate, and manage Ebola cases; this should include assured access to a qualified diagnostic laboratory for EVD and, where appropriate, the capacity to manage travelers originating from known Ebola-infected areas who arrive at international airports or major land crossing points with unexplained febrile illness.
- The general public should be provided with accurate and relevant information on the Ebola outbreak and measures to reduce the risk of exposure.
- States should be prepared to facilitate the evacuation and repatriation of nationals (e.g. health workers) who have been exposed to Ebola.

The Committee emphasized the importance of continued support by WHO and other national and international partners towards the effective implementation and monitoring of these recommendations.

**NOTE:** Details regarding Ebola infection control and diagnosis are available at:

<http://www.cdc.gov/vhf/ebola/hcp/infection-prevention-and-control-recommendations.html>

<http://www.cdc.gov/vhf/ebola/hcp/interim-guidance-specimen-collection-submission-patients-suspected-infection-ebola.html>

<http://thehealthcareblog.com/blog/2014/08/08/the-ebola-outbreak-the-cdc-directors-guidance-for-health-care-workers/>