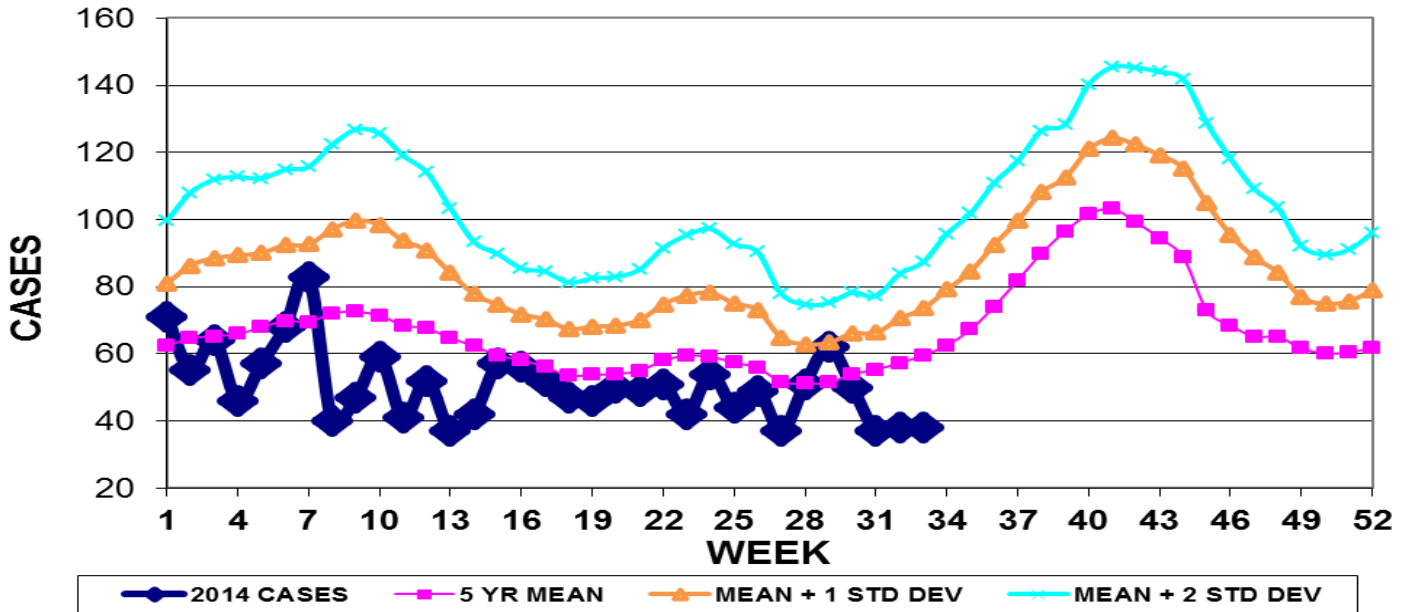


INFECTION CONTROL DEPARTMENT
 GUAM MEMORIAL HOSPITAL AUTHORITY
GUAM EPIDEMIOLOGY NEWSLETTER

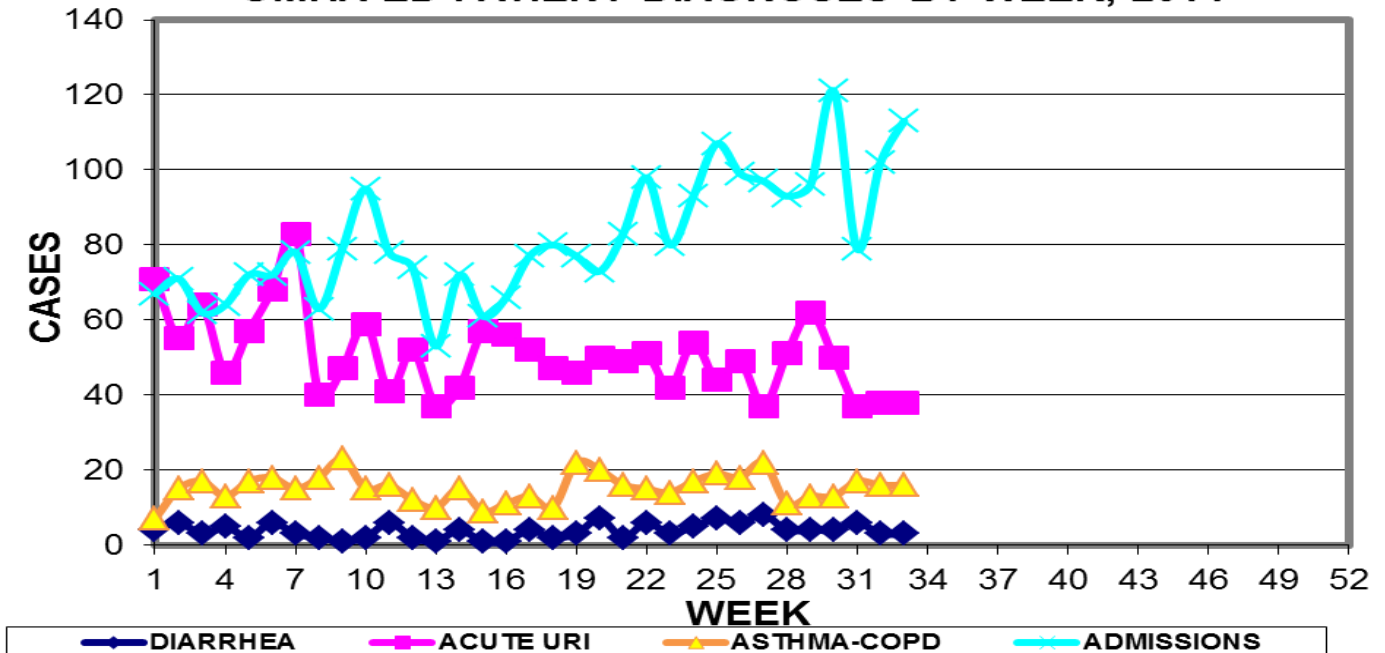
REPORT FOR WEEK ENDING: 8/16/2014 (Reporting week 2014-33)

GUAM REPORTS

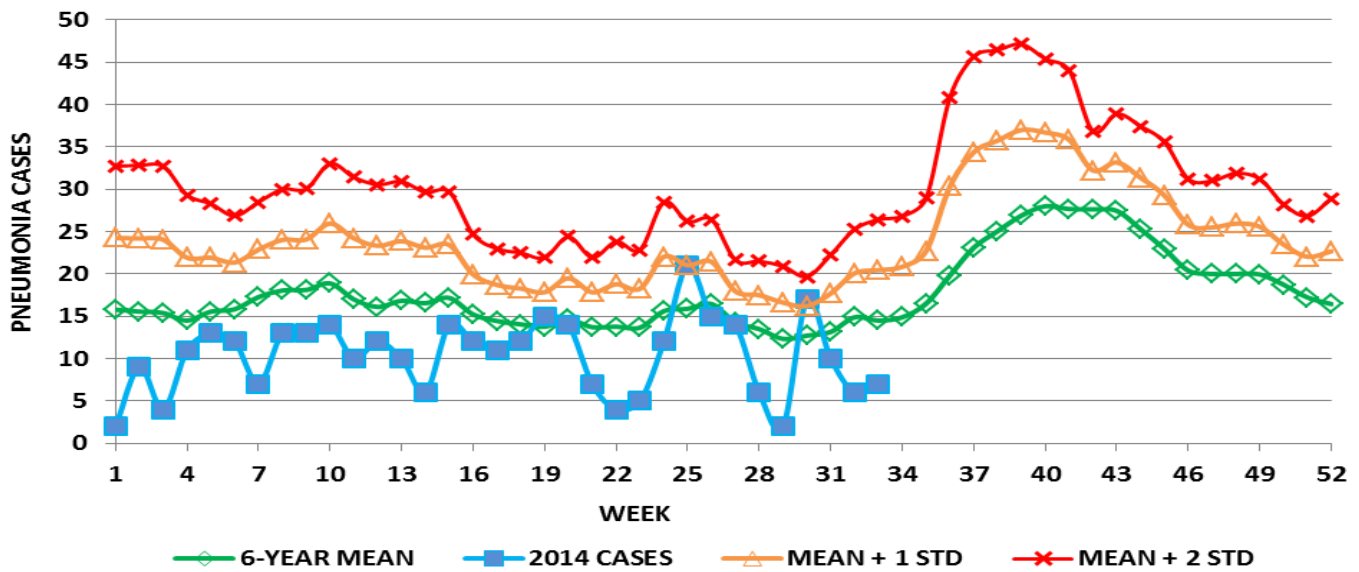
**GUAM ACUTE RESPIRATORY INFECTION SURVEILLANCE 2014;
 GMHA-EMERGENCY DEPARTMENT PATIENTS BY WEEK SEEN**



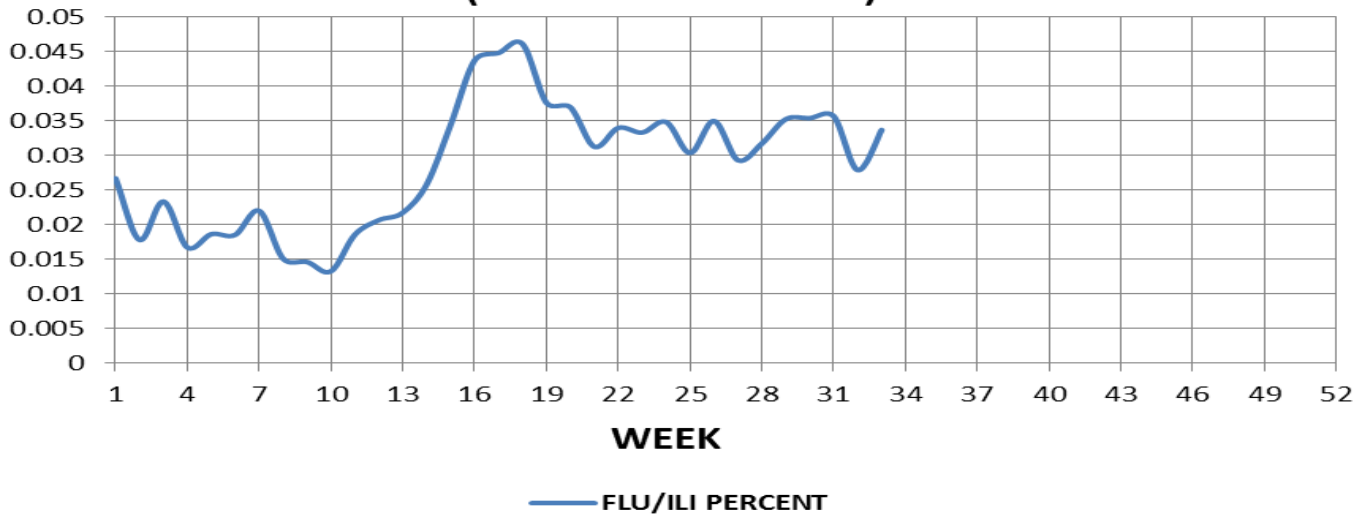
**GUAM SYNDROMIC DISEASE SURVEILLANCE
 GMHA-ED PATIENT DIAGNOSES BY WEEK, 2014**



**MEDICAL RECORDS AND INFECTION CONTROL DEPARTMENTS
GUAM MEMORIAL HOSPITAL AUTHORITY
HOSPITAL INPATIENT DISCHARGES WITH A DIAGNOSIS OF PNEUMONIA
BY WEEK DISCHARGED, 2014**



**FLU/ILI AS A PERCENT OF TOTAL PATIENTS
SEEN, GMHA-ED, 2014
(3-WEEK SMOOTHED)**



GUAM SENTINEL PHYSICIAN INFLUENZA SURVEILLANCE
 REPORTS OF INFLUENZA OR INFLUENZA-LIKE ILLNESSES
 RECEIVED FOR THE WEEK ENDING 8/16/14
 Eight cases reported by sentinel physicians

Bureau of Communicable Disease Control
Guam Department of Public Health & Social Services
H1N1 INFLUENZA SURVEILLANCE, WEEK 33, 2014
NO CASES OF H1N1 REPORTED FOR WEEK 33
Cumulative 2014: 0 civilian & 0 military cases

INFECTION CONTROL DEPARTMENT
 GUAM MEMORIAL HOSPITAL AUTHORITY
HOSPITALIZATIONS FOR INFLUENZA A BY AGE
AND MORBIDITY REPORTING WEEK

AGE	24	25	26	27	28	29	30	31	32	33	TOTAL
0-4											1
5-18											
19-24											
25-49											
50-64											1
65+											
TOTAL	0	0	0	0	0	0	0	0	0	0	2

Bureau of Communicable Disease Control
Guam Department of Public Health & Social Services
ISLAND-WIDE COMMUNICABLE DISEASE REPORT

REPORTS RECEIVED FOR THE WEEK ENDING 8/16/2014

<i>Acinetobacter lwoffii</i>	1
<i>Aeromonas hydrophila</i>	1
Chickenpox	1
<i>Chlamydia trachomatis</i>	20
Conjunctivitis	4
<i>E. coli</i> MDR, ESBL+	4
Gonorrhea	4
Hepatitis A	2
Hepatitis B	2
HPV	1
HSV 2	1
Influenza	2
<i>Klebsiella pneumoniae</i> MDR	3
Meningitis, viral	1
MRSA	12
<i>Pseudomonas aruginosa</i>	1
RSV	2
Salmonella	2
Scabies	21
Stevens Johnson Syndrome	1
Streptococcal sore throat	14
Streptococcal disease (other than SST)	2
TB, pulmonary	2

□

INFECTION CONTROL DEPARTMENT
 GUAM MEMORIAL HOSPITAL AUTHORITY
**GMHA-EMERGENCY DEPARTMENT CLINICAL DIAGNOSES OF INFLUENZA OR FLU-
 SYNDROME BY WEEK AND PATIENT'S VILLAGE OF RESIDENCE, 2014**
 (Villages listed geographically from northern-most to southern-most)

VILLAGE	WEEK										TOTAL	2014 RATE
	24	25	26	27	28	29	30	31	32	33		
Yigo	0	3	2	2	2	1	1	0	3	4	46	202.40
Dededo	6	4	5	3	4	5	3	4	7	8	135	297.32
Tamuning	2	0	5	1	3	3	2	2	0	3	65	326.83
Barrigada	1	2	4	1	0	1	1	1	0	1	35	390.32
Mangilao	3	0	3	1	4	9	1	2	3	1	57	371.38
M-T-M	2	0	0	0	1	2	1	2	1	2	28	406.09
Hagatna	0	0	0	1	0	1	0	0	0	0	10	941.62
Agaña Hts	1	1	0	0	0	0	0	0	0	0	4	103.98
Sinajana	0	0	1	0	0	0	0	0	0	0	8	305.46
Chalan Pago-Ordot	1	1	0	1	1	2	0	0	0	0	16	232.15
Asan-Maina	0	0	0	0	0	0	0	0	0	0	3	138.95
Piti	0	0	0	0	0	0	0	0	0	0	2	136.15
Santa Rita	0	1	0	0	0	0	0	0	0	0	5	81.34
Agat	1	0	2	0	0	0	1	0	0	1	12	241.55
Yona	2	1	0	1	1	2	1	2	1	0	23	351.31
Talofof	0	0	1	0	0	1	0	0	1	0	12	389.48
Inarajan	0	0	0	1	0	1	0	0	0	0	7	304.88
Merizo	1	0	0	0	0	0	1	0	0	0	8	428.04
Umatac	0	0	0	0	0	0	0	0	0	0	3	379.75
Tourist	2	0	0	0	0	0	0	0	0	0	8	
Unknown	0	0	0	0	0	0	0	0	0	0	3	
TOTAL	22	13	23	12	16	28	12	13	16	20	492	305.59

NOTE: Rate = cases per 100,000 population for the specified period.

INFLUENZA/ILI ACTIVITY LEVEL - Regional (Less than half of villages affected)
 (ACTIVITY LEVELS: No activity, Sporadic, Local, Regional, Widespread)

GUAM ANIMAL DISEASE (ZONOSSES) REPORTS
 REPORTS RECEIVED FOR THE WEEK ENDING 8/16/2014

Anaplasmosis - 3 canine, Ehrlichiosis – 2 canine