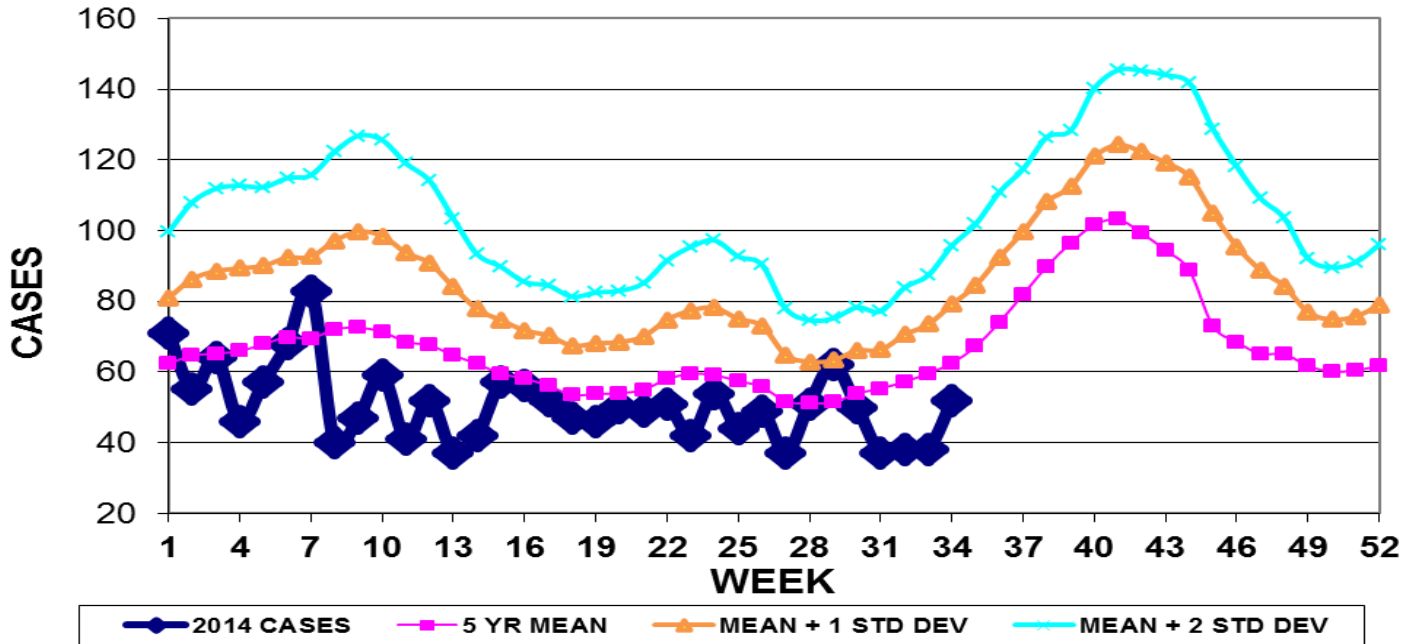


INFECTION CONTROL DEPARTMENT
 GUAM MEMORIAL HOSPITAL AUTHORITY
GUAM EPIDEMIOLOGY NEWSLETTER

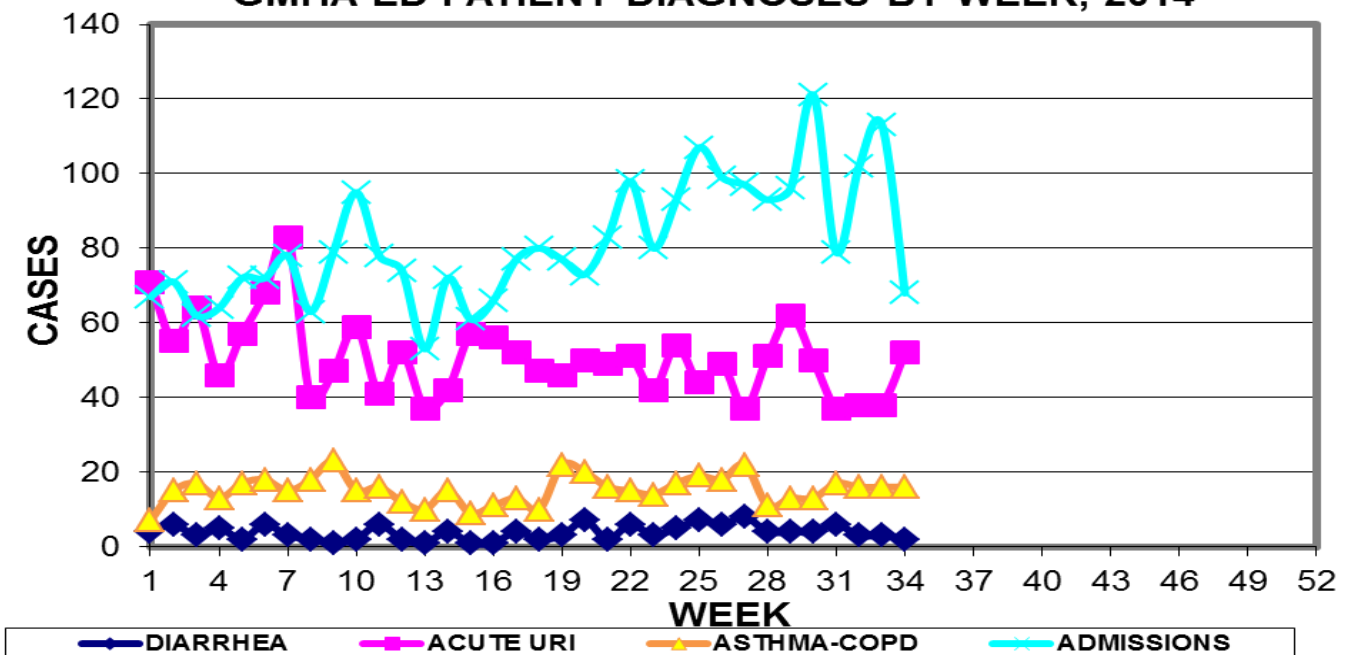
REPORT FOR WEEK ENDING: 8/23/2014 (Reporting week 2014-34)

GUAM REPORTS

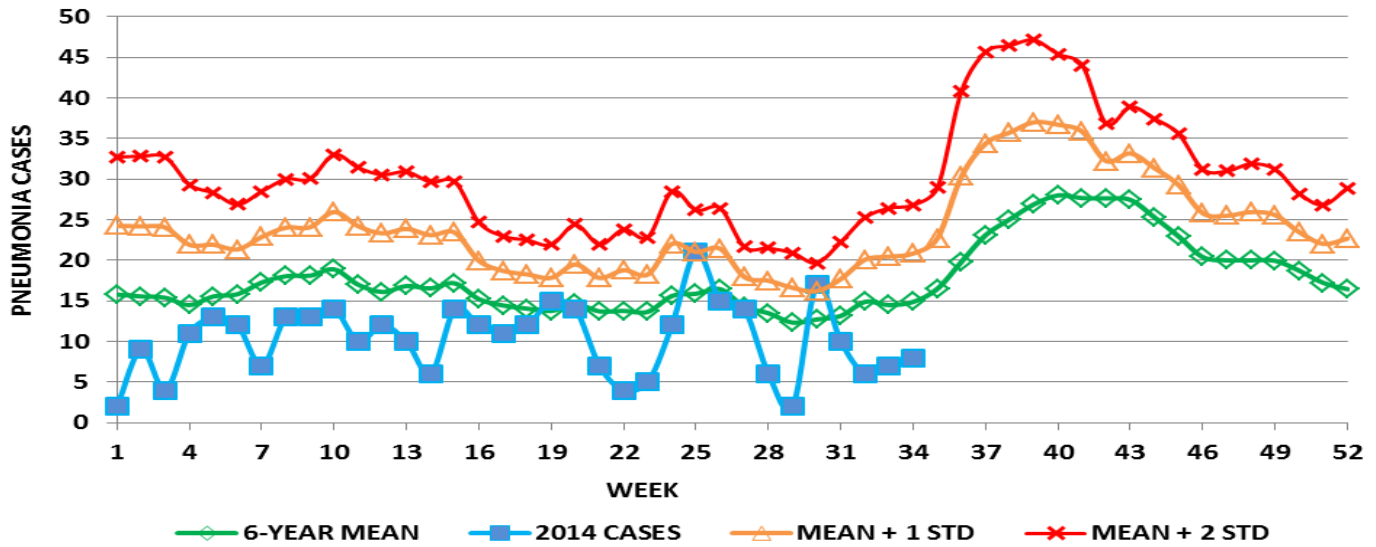
**GUAM ACUTE RESPIRATORY INFECTION SURVEILLANCE 2014;
 GMHA-EMERGENCY DEPARTMENT PATIENTS BY WEEK SEEN**



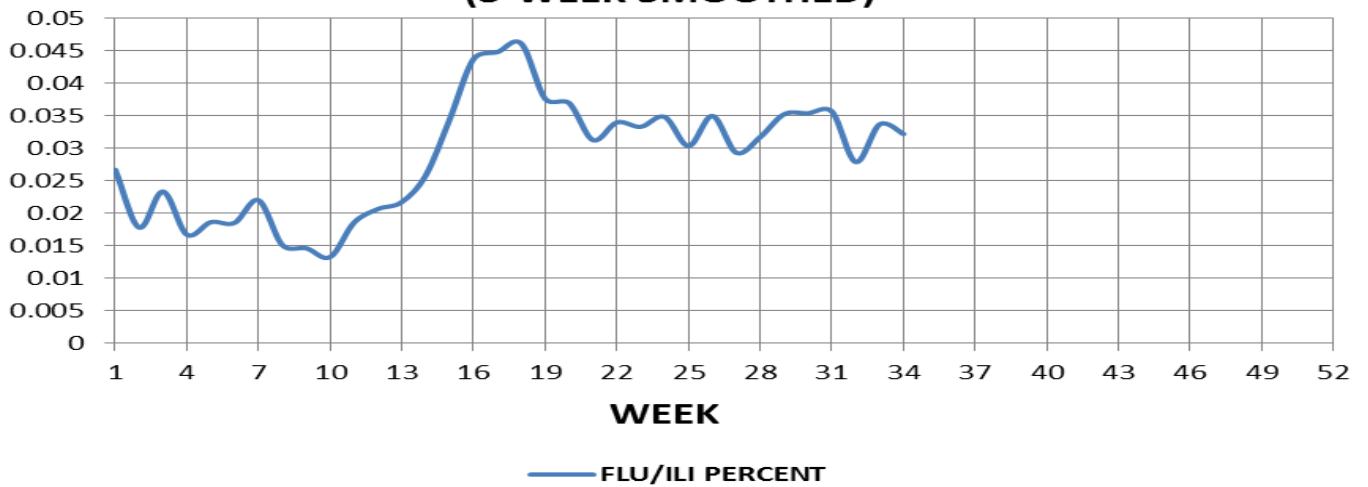
**GUAM SYNDROMIC DISEASE SURVEILLANCE
 GMHA-ED PATIENT DIAGNOSES BY WEEK, 2014**



**MEDICAL RECORDS AND INFECTION CONTROL DEPARTMENTS
GUAM MEMORIAL HOSPITAL AUTHORITY
HOSPITAL INPATIENT DISCHARGES WITH A DIAGNOSIS OF PNEUMONIA
BY WEEK DISCHARGED, 2014**



**FLU/ILI AS A PERCENT OF TOTAL PATIENTS
SEEN, GMHA-ED, 2014
(3-WEEK SMOOTHED)**



GUAM SENTINEL PHYSICIAN INFLUENZA SURVEILLANCE
 REPORTS OF INFLUENZA OR INFLUENZA-LIKE ILLNESSES
 RECEIVED FOR THE WEEK ENDING 8/23/14
 Five cases reported by sentinel physicians

Bureau of Communicable Disease Control
 Guam Department of Public Health & Social Services
H1N1 INFLUENZA SURVEILLANCE, WEEK 34, 2014
 NO CASES OF H1N1 REPORTED FOR WEEK 34
Cumulative 2014: 0 civilian & 0 military cases

INFECTION CONTROL DEPARTMENT
 GUAM MEMORIAL HOSPITAL AUTHORITY
HOSPITALIZATIONS FOR INFLUENZA A BY AGE
AND MORBIDITY REPORTING WEEK

AGE	25	26	27	28	29	30	31	32	33	34	TOTAL
0-4											1
5-18											
19-24											
25-49											
50-64											1
65+											
TOTAL	0	0	0	0	0	0	0	0	0	0	2

Bureau of Communicable Disease Control
 Guam Department of Public Health & Social Services
ISLAND-WIDE COMMUNICABLE DISEASE REPORT

REPORTS RECEIVED FOR THE WEEK ENDING 8/23/2014

<i>Chlamydia trachomatis</i>	20
<i>Clostridium difficile</i>	2
Conjunctivitis	4
<i>E. coli</i> MDR, ESBL+	9
Gonorrhea	2
Hepatitis B	1
Hepatitis C	5
Hand, foot, and mouth Disease	1
<i>Morganella morganii</i> MDR	1
MRSA	8
Scabies	7
Streptococcal sore throat	2
Streptococcal disease (other than SST)	4
VRE	2

□

INFECTION CONTROL DEPARTMENT
 GUAM MEMORIAL HOSPITAL AUTHORITY
**GMHA-EMERGENCY DEPARTMENT CLINICAL DIAGNOSES OF INFLUENZA OR FLU-
 SYNDROME BY WEEK AND PATIENT'S VILLAGE OF RESIDENCE, 2014**
 (Villages listed geographically from northern-most to southern-most)

VILLAGE	WEEK										TOTAL	2014 RATE
	25	26	27	28	29	30	31	32	33	34		
Yigo	3	2	2	2	1	1	0	3	4	2	48	231.31
Dededo	4	5	3	4	5	3	4	7	8	3	138	303.92
Tamuning	0	5	1	3	3	2	2	0	3	2	67	336.89
Barrigada	2	4	1	0	1	1	1	0	1	0	35	390.32
Mangilao	0	3	1	4	9	1	2	3	1	1	58	377.90
Mongmong-T-M	0	0	0	1	2	1	2	1	2	0	28	406.09
Hagatna	0	0	1	0	1	0	0	0	0	0	10	941.62
Agaña Heights	1	0	0	0	0	0	0	0	0	0	4	103.98
Sinajana	0	1	0	0	0	0	0	0	0	1	9	343.64
Chalan Pago-Ordot	1	0	1	1	2	0	0	0	0	1	17	246.66
Asan-Maina	0	0	0	0	0	0	0	0	0	0	3	138.95
Piti	0	0	0	0	0	0	0	0	0	0	2	136.15
Santa Rita	1	0	0	0	0	0	0	0	0	0	5	81.34
Agat	0	2	0	0	0	1	0	0	1	0	12	241.55
Yona	1	0	1	1	2	1	2	1	0	3	26	397.13
Talofofo	0	1	0	0	1	0	0	1	0	1	13	421.94
Inarajan	0	0	1	0	1	0	0	0	0	1	8	348.43
Merizo	0	0	0	0	0	1	0	0	0	0	8	428.04
Umatac	0	0	0	0	0	0	0	0	0	0	3	379.75
Tourist	0	0	0	0	0	0	0	0	0	0	8	
Unknown	0	0	0	0	0	0	0	0	0	0	3	
TOTAL	13	23	12	16	28	12	13	16	20	15	507	314.90

NOTE: Rate = cases per 100,000 population for the specified period.

INFLUENZA/ILI ACTIVITY LEVEL - Regional (Less than half of villages affected)
 (ACTIVITY LEVELS: No activity, Sporadic, Local, Regional, Widespread)

GUAM ANIMAL DISEASE (ZONOSSES) REPORTS
 REPORTS RECEIVED FOR THE WEEK ENDING 8/23/2014

None