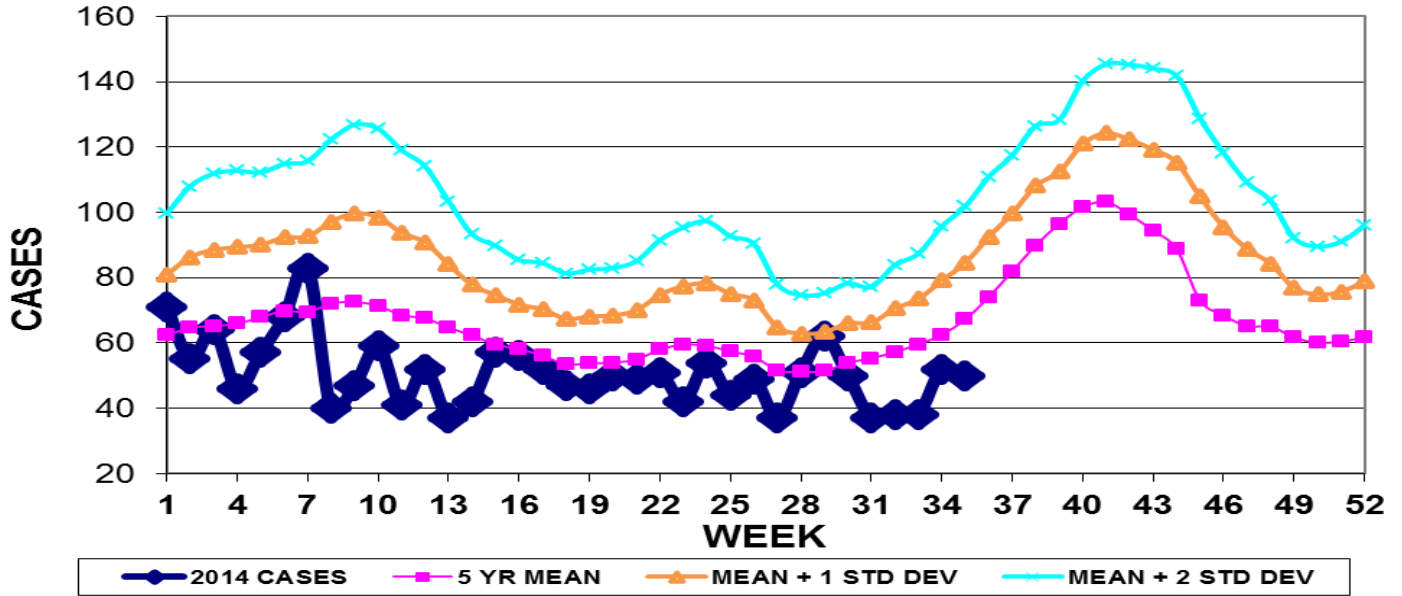


INFECTION CONTROL DEPARTMENT  
 GUAM MEMORIAL HOSPITAL AUTHORITY  
**GUAM EPIDEMIOLOGY NEWSLETTER**

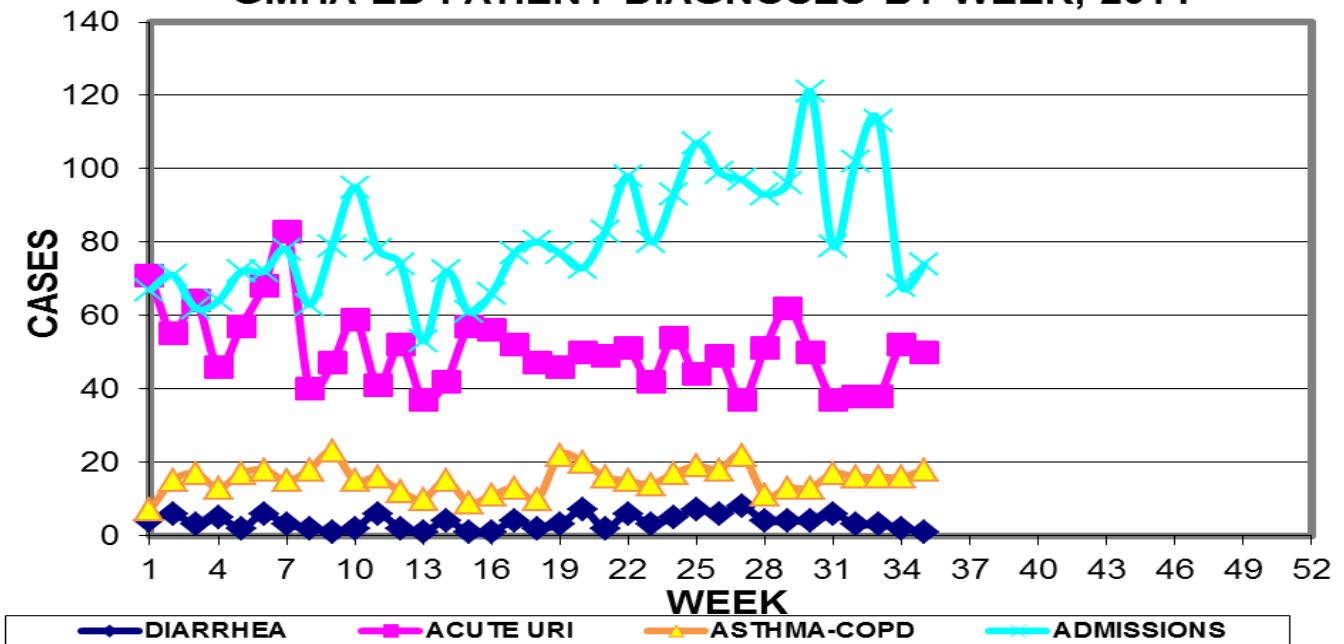
REPORT FOR WEEK ENDING: 8/30/2014 (Reporting week 2014-35)

**GUAM REPORTS**

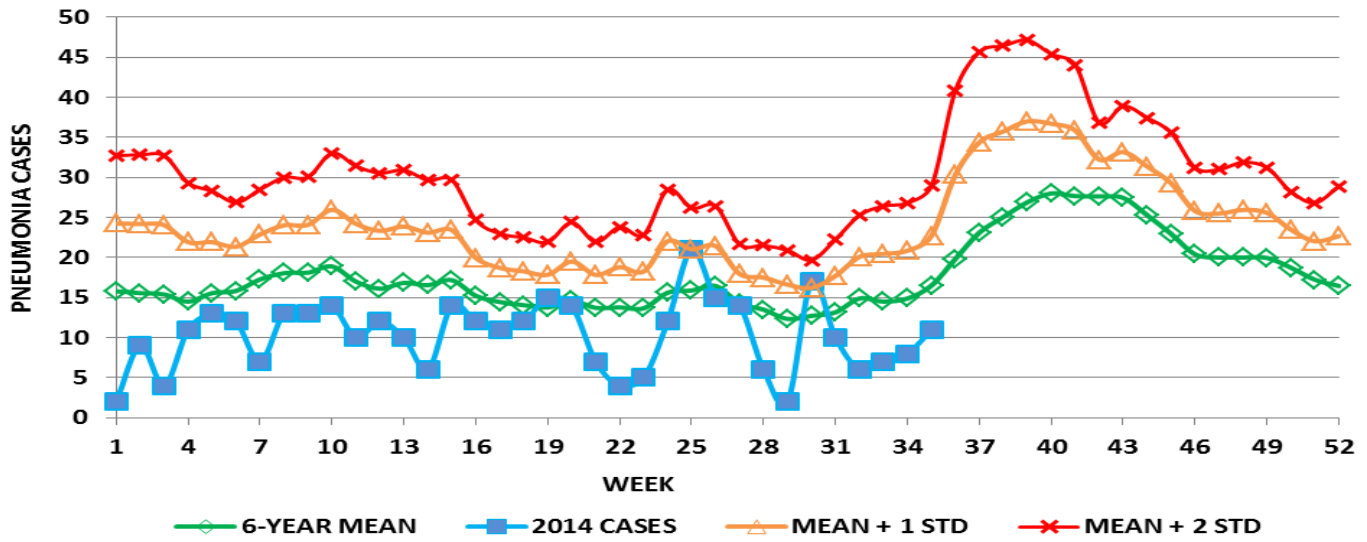
**GUAM ACUTE RESPIRATORY INFECTION SURVEILLANCE 2014;  
 GMHA-EMERGENCY DEPARTMENT PATIENTS BY WEEK SEEN**



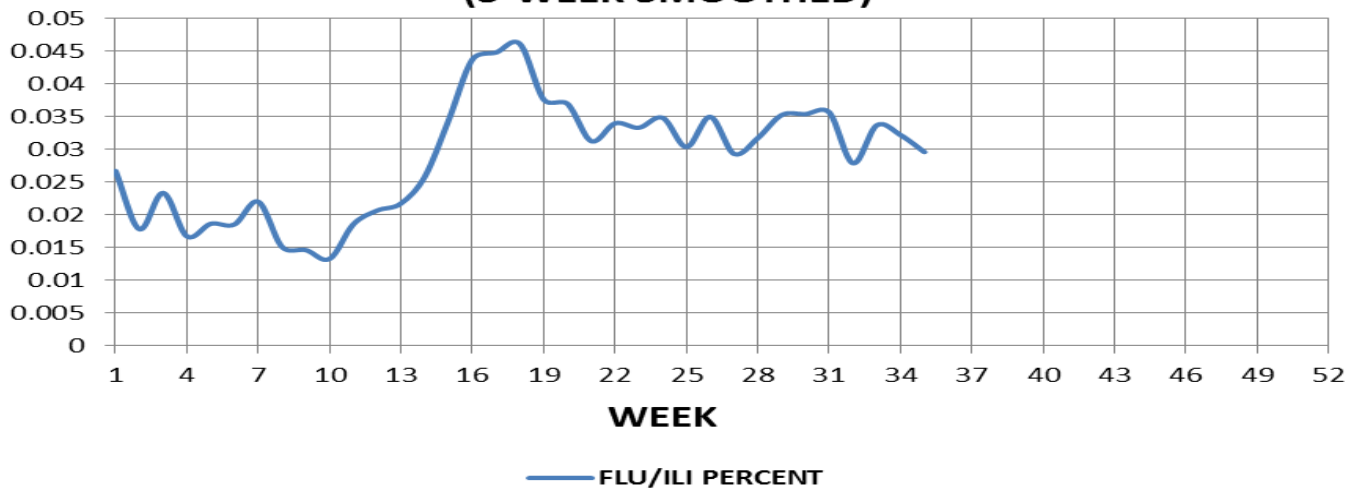
**GUAM SYNDROMIC DISEASE SURVEILLANCE  
 GMHA-ED PATIENT DIAGNOSES BY WEEK, 2014**



**MEDICAL RECORDS AND INFECTION CONTROL DEPARTMENTS  
GUAM MEMORIAL HOSPITAL AUTHORITY  
HOSPITAL INPATIENT DISCHARGES WITH A DIAGNOSIS OF PNEUMONIA  
BY WEEK DISCHARGED, 2014**



**FLU/ILI AS A PERCENT OF TOTAL PATIENTS  
SEEN, GMHA-ED, 2014  
(3-WEEK SMOOTHED)**



**GUAM SENTINEL PHYSICIAN INFLUENZA SURVEILLANCE**

REPORTS OF INFLUENZA OR INFLUENZA-LIKE ILLNESSES

RECEIVED FOR THE WEEK ENDING 8/30/14

Five cases reported by sentinel physicians

Bureau of Communicable Disease Control

Guam Department of Public Health & Social Services

**H1N1 INFLUENZA SURVEILLANCE, WEEK 35, 2014**

NO CASES OF H1N1 REPORTED FOR WEEK 35

**Cumulative 2014: 0 civilian & 0 military cases**

INFECTION CONTROL DEPARTMENT

GUAM MEMORIAL HOSPITAL AUTHORITY

**HOSPITALIZATIONS FOR INFLUENZA A BY AGE**

**AND MORBIDITY REPORTING WEEK**

<b>AGE</b>	<b>26</b>	<b>27</b>	<b>28</b>	<b>29</b>	<b>30</b>	<b>31</b>	<b>32</b>	<b>33</b>	<b>34</b>	<b>35</b>	<b>TOTAL</b>
0-4											1
5-18											
19-24											
25-49											
50-64											1
65+											
<b>TOTAL</b>	<b>0</b>	<b>0</b>	<b>0</b>	<b>0</b>	<b>0</b>	<b>0</b>	<b>0</b>	<b>0</b>	<b>0</b>	<b>0</b>	<b>2</b>

Bureau of Communicable Disease Control

**Guam Department of Public Health & Social Services**

**ISLAND-WIDE COMMUNICABLE DISEASE REPORT**

REPORTS RECEIVED FOR THE WEEK ENDING 8/30/2014

Chickenpox	1
<i>Chlamydia trachomatis</i>	15
Conjunctivitis	10
<i>E. coli</i> MDR, ESBL+	3
Gonorrhea	1
Hepatitis B	2
Hepatitis C	2
Hand, foot, and mouth Disease	1
Influenza A	2
Influenza B	1
<i>Klebsiella pneumoniae</i> MDR, ESBL+	1
MRSA	7
RSV	1
Scabies	8
Streptococcal sore throat	13
Streptococcal disease (other than SST)	5
Syphilis	1

□

INFECTION CONTROL DEPARTMENT  
 GUAM MEMORIAL HOSPITAL AUTHORITY  
**GMHA-EMERGENCY DEPARTMENT CLINICAL DIAGNOSES OF INFLUENZA OR FLU-  
 SYNDROME BY WEEK AND PATIENT'S VILLAGE OF RESIDENCE, 2014**  
 (Villages listed geographically from northern-most to southern-most)

VILLAGE	WEEK										TOTAL	2014 RATE
	26	27	28	29	30	31	32	33	34	35		
Yigo	2	2	2	1	1	0	3	4	2	0	48	231.31
Dededo	5	3	4	5	3	4	7	8	3	3	141	310.53
Tamuning	5	1	3	3	2	2	0	3	2	1	68	341.91
Barrigada	4	1	0	1	1	1	0	1	0	1	36	401.47
Mangilao	3	1	4	9	1	2	3	1	1	2	58	377.90
Mongmong-T-M	0	0	1	2	1	2	1	2	0	0	28	406.09
Hagatña	0	1	0	1	0	0	0	0	0	1	11	1035.78
Agaña Heights	0	0	0	0	0	0	0	0	0	0	4	103.98
Sinajana	1	0	0	0	0	0	0	0	1	2	11	420.21
Chalan Pago-Ordot	0	1	1	2	0	0	0	0	1	0	17	246.66
Asan-Maina	0	0	0	0	0	0	0	0	0	0	3	138.95
Piti	0	0	0	0	0	0	0	0	0	0	2	136.15
Santa Rita	0	0	0	0	0	0	0	0	0	0	5	81.34
Agat	2	0	0	0	1	0	0	1	0	0	12	241.55
Yona	0	1	1	2	1	2	1	0	3	2	28	427.68
Talofof	1	0	0	1	0	0	1	0	1	0	13	421.94
Inarajan	0	1	0	1	0	0	0	0	1	0	8	348.43
Merizo	0	0	0	0	1	0	0	0	0	0	8	428.04
Umatac	0	0	0	0	0	0	0	0	0	0	3	379.75
Tourist	0	0	0	0	0	0	0	0	0	0	8	
Unknown	0	0	0	0	0	0	0	0	0	0	3	
<b>TOTAL</b>	<b>23</b>	<b>12</b>	<b>16</b>	<b>28</b>	<b>12</b>	<b>13</b>	<b>16</b>	<b>20</b>	<b>15</b>	<b>12</b>	<b>519</b>	<b>322.36</b>

NOTE: Rate = cases per 100,000 population for the specified period.

INFLUENZA/ILI ACTIVITY LEVEL - Regional (Less than half of villages affected)  
 (ACTIVITY LEVELS: No activity, Sporadic, Local, Regional, Widespread)

**GUAM ANIMAL DISEASE (ZONOSSES) REPORTS**  
 REPORTS RECEIVED FOR THE WEEK ENDING 8/30/2014

Ehrlichiosis – 2 canine