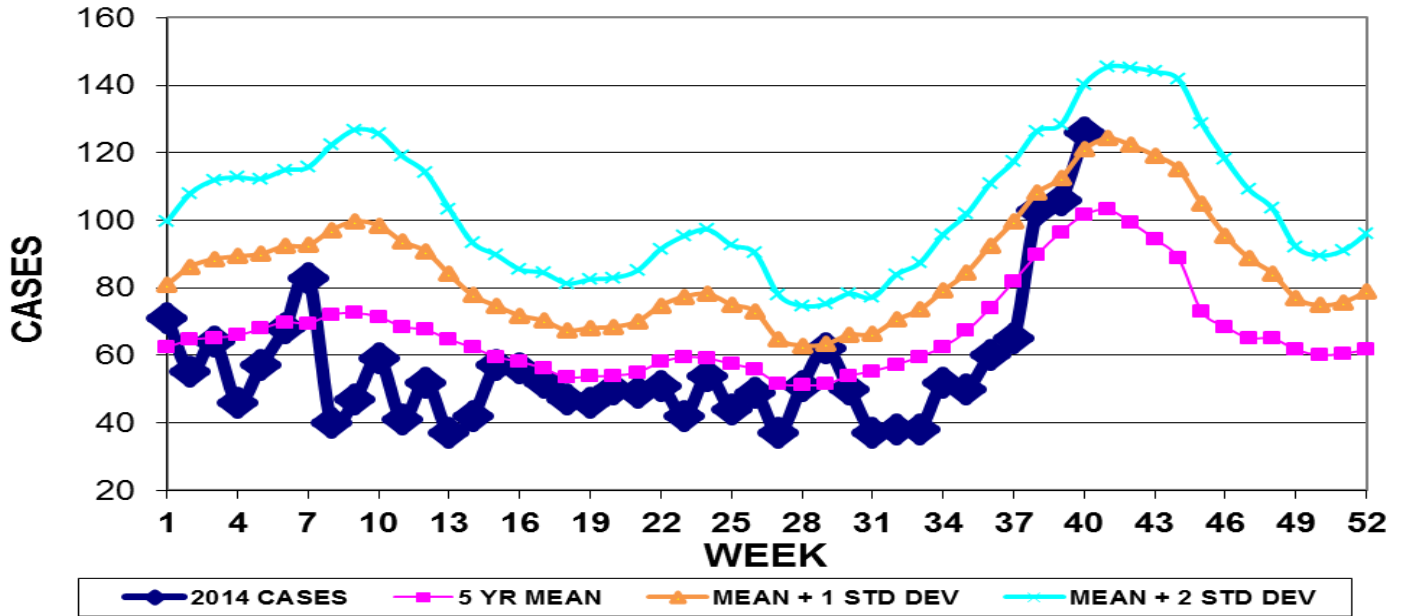


INFECTION CONTROL DEPARTMENT  
 GUAM MEMORIAL HOSPITAL AUTHORITY  
**GUAM EPIDEMIOLOGY NEWSLETTER**

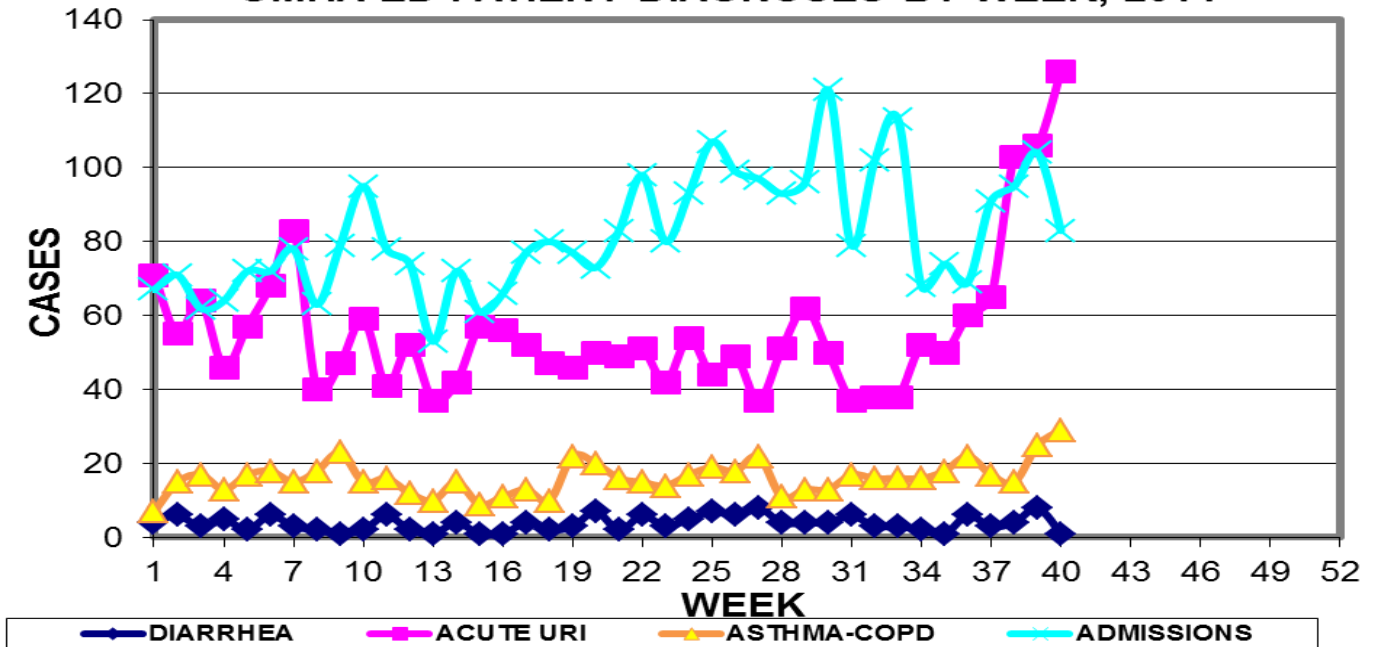
REPORT FOR WEEK ENDING: 10/4/2014 (Reporting week 2014-40)

**GUAM REPORTS**

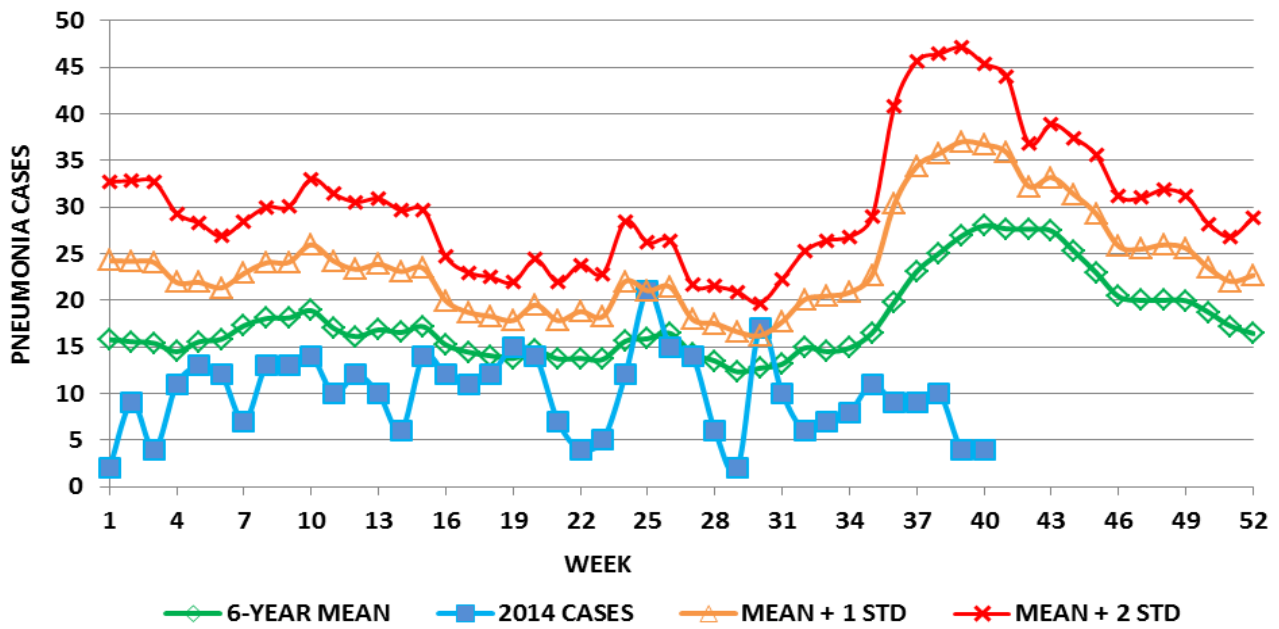
**GUAM ACUTE RESPIRATORY INFECTION SURVEILLANCE 2014;  
 GMHA-EMERGENCY DEPARTMENT PATIENTS BY WEEK SEEN**



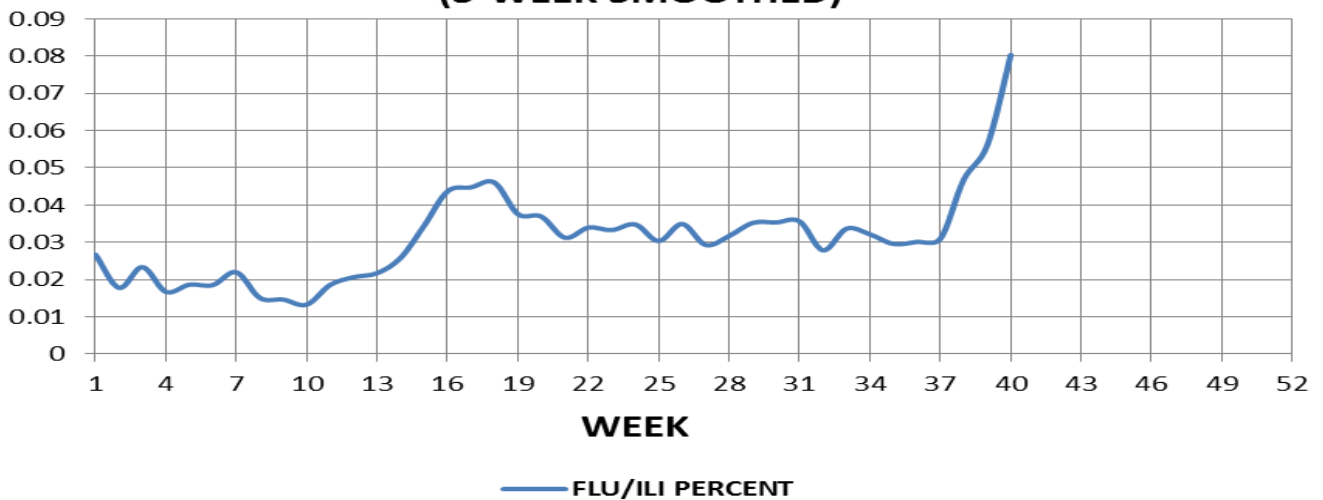
**GUAM SYNDROMIC DISEASE SURVEILLANCE  
 GMHA-ED PATIENT DIAGNOSES BY WEEK, 2014**



**MEDICAL RECORDS AND INFECTION CONTROL DEPARTMENTS  
GUAM MEMORIAL HOSPITAL AUTHORITY  
HOSPITAL INPATIENT DISCHARGES WITH A DIAGNOSIS OF PNEUMONIA  
BY WEEK DISCHARGED, 2014**



**FLU/ILI AS A PERCENT OF TOTAL PATIENTS  
SEEN, GMHA-ED, 2014  
(3-WEEK SMOOTHED)**



**GUAM SENTINEL PHYSICIAN INFLUENZA SURVEILLANCE**  
 REPORTS OF INFLUENZA OR INFLUENZA-LIKE ILLNESSES  
 RECEIVED FOR THE WEEK ENDING 10/4/14  
**Twenty-three cases reported by sentinel physicians**

Bureau of Communicable Disease Control  
 Guam Department of Public Health & Social Services  
**H1N1 INFLUENZA SURVEILLANCE, WEEK 40, 2014**  
**NO CASES OF H1N1 REPORTED FOR WEEK 40**  
**Cumulative 2014: 0 civilian & 0 military cases**

INFECTION CONTROL DEPARTMENT  
 GUAM MEMORIAL HOSPITAL AUTHORITY  
**HOSPITALIZATIONS FOR INFLUENZA A BY AGE**  
**AND MORBIDITY REPORTING WEEK**

| <b>AGE</b>   | <b>31</b> | <b>32</b> | <b>33</b> | <b>34</b> | <b>35</b> | <b>36</b> | <b>37</b> | <b>38</b> | <b>39</b> | <b>40</b> | <b>TOTAL</b> |
|--------------|-----------|-----------|-----------|-----------|-----------|-----------|-----------|-----------|-----------|-----------|--------------|
| 0-4          |           |           |           |           |           |           |           |           |           | 1         | 2            |
| 5-18         |           |           |           |           |           |           |           |           |           |           |              |
| 19-24        |           |           |           |           |           |           |           |           |           |           |              |
| 25-49        |           |           |           |           |           |           |           |           |           |           |              |
| 50-64        |           |           |           |           |           |           |           |           | 1         | 1         | 3            |
| 65+          |           |           |           |           |           |           |           |           |           | 2         | 2            |
| <b>TOTAL</b> | <b>0</b>  | <b>0</b>  | <b>0</b>  | <b>0</b>  | <b>0</b>  | <b>0</b>  | <b>0</b>  | <b>0</b>  | <b>1</b>  | <b>4</b>  | <b>7</b>     |

NOTE: One case of Influenza B hospitalized during week 38

Bureau of Communicable Disease Control  
 Guam Department of Public Health & Social Services  
**ISLAND-WIDE COMMUNICABLE DISEASE REPORT**

REPORTS RECEIVED FOR THE WEEK ENDING 10/4/2014

|                                    |    |
|------------------------------------|----|
| <i>Chlamydia trachomatis</i>       | 19 |
| Conjunctivitis                     | 2  |
| Gonorrhea                          | 5  |
| Hepatitis B                        | 1  |
| Influenza A                        | 6  |
| Influenza B                        | 3  |
| Influenza, clinical diagnosis only | 6  |
| MRSA                               | 4  |
| RSV                                | 3  |
| Salmonellosis                      | 1  |
| Scabies                            | 3  |
| Shigellosis                        | 1  |
| Streptococcal sore throat          | 3  |
| Streptococcal disease, other       | 4  |
| Syphilis, primary                  | 2  |
| VRE                                | 2  |

□

INFECTION CONTROL DEPARTMENT  
 GUAM MEMORIAL HOSPITAL AUTHORITY  
**GMHA-EMERGENCY DEPARTMENT CLINICAL DIAGNOSES OF INFLUENZA OR  
 FLU-SYNDROME BY WEEK AND PATIENT'S VILLAGE OF RESIDENCE, 2014**  
 (Villages listed geographically from northern-most to southern-most)

| VILLAGE           | WEEK      |           |           |           |           |           |           |           |           |           | TOTAL      | 2014<br>RATE  |
|-------------------|-----------|-----------|-----------|-----------|-----------|-----------|-----------|-----------|-----------|-----------|------------|---------------|
|                   | 31        | 32        | 33        | 34        | 35        | 36        | 37        | 38        | 39        | 40        |            |               |
| Yigo              | 0         | 3         | 4         | 2         | 0         | 4         | 1         | 6         | 5         | 4         | 68         | 327.70        |
| Dededo            | 4         | 7         | 8         | 3         | 3         | 6         | 5         | 9         | 15        | 14        | 190        | 418.45        |
| Tamuning          | 2         | 0         | 3         | 2         | 1         | 3         | 3         | 4         | 1         | 7         | 86         | 432.42        |
| Barrigada         | 1         | 0         | 1         | 0         | 1         | 0         | 0         | 4         | 4         | 6         | 50         | 557.60        |
| Mangilao          | 2         | 3         | 1         | 1         | 2         | 0         | 5         | 3         | 3         | 8         | 79         | 514.73        |
| Mongmong-T-M      | 2         | 1         | 2         | 0         | 0         | 0         | 1         | 3         | 4         | 5         | 41         | 594.63        |
| Hagatña           | 0         | 0         | 0         | 0         | 1         | 1         | 0         | 0         | 1         | 0         | 13         | 1224.11       |
| Agaña Heights     | 0         | 0         | 0         | 0         | 0         | 0         | 1         | 0         | 1         | 0         | 6          | 155.97        |
| Sinajana          | 0         | 0         | 0         | 1         | 2         | 1         | 0         | 2         | 0         | 0         | 14         | 534.56        |
| Chalan Pago-Ordot | 0         | 0         | 0         | 1         | 0         | 0         | 0         | 0         | 2         | 2         | 21         | 304.70        |
| Asan-Maina        | 0         | 0         | 0         | 0         | 0         | 0         | 0         | 1         | 0         | 2         | 6          | 277.91        |
| Piti              | 0         | 0         | 0         | 0         | 0         | 0         | 0         | 0         | 1         | 0         | 3          | 204.22        |
| Santa Rita        | 0         | 0         | 0         | 0         | 0         | 0         | 0         | 1         | 0         | 2         | 8          | 130.14        |
| Agat              | 0         | 0         | 1         | 0         | 0         | 0         | 0         | 1         | 1         | 2         | 16         | 322.06        |
| Yona              | 2         | 1         | 0         | 3         | 2         | 2         | 0         | 3         | 3         | 3         | 39         | 595.69        |
| Talofofo          | 0         | 1         | 0         | 1         | 0         | 2         | 0         | 0         | 1         | 3         | 19         | 616.68        |
| Inarajan          | 0         | 0         | 0         | 1         | 0         | 1         | 0         | 1         | 2         | 3         | 15         | 653.31        |
| Merizo            | 0         | 0         | 0         | 0         | 0         | 0         | 0         | 0         | 1         | 0         | 9          | 481.54        |
| Umatac            | 0         | 0         | 0         | 0         | 0         | 0         | 0         | 1         | 0         | 1         | 5          | 632.91        |
| Tourist           | 0         | 0         | 0         | 0         | 0         | 0         | 0         | 0         | 0         | 1         | 8          |               |
| Unknown           | 0         | 0         | 0         | 0         | 0         | 0         | 0         | 0         | 0         | 0         | 3          |               |
| <b>TOTAL</b>      | <b>13</b> | <b>16</b> | <b>20</b> | <b>15</b> | <b>12</b> | <b>20</b> | <b>16</b> | <b>39</b> | <b>45</b> | <b>63</b> | <b>639</b> | <b>396.89</b> |

NOTE: Rate = cases per 100,000 population for the specified period.

INFLUENZA/ILI ACTIVITY LEVEL - Widespread (More than half of villages affected)  
 (ACTIVITY LEVELS: No activity, Sporadic, Local, Regional, Widespread)

**GUAM ANIMAL DISEASE (ZONOSSES) REPORTS**  
 REPORTS RECEIVED FOR THE WEEK ENDING 10/4/2014

Anaplasmosis – 1 canine, Babesiosis – 2 canine, Ehrlichiosis – 1 canine

## **INFLUENZA ON GUAM – 2014**

While cases of influenza on the U.S. mainland typically peak during the winter months, on Guam there are frequently two peak periods of flu activity – one in the Fall soon after school starts and a second peak coinciding with the Winter flu season in the U.S. mainland. It appears that this pattern may be repeated on Guam for the 2014-2015 flu season. Although laboratory identification of circulating flu virus serotypes are still pending, reports of acute respiratory illnesses at the Guam Memorial Hospital Emergency Department have more than doubled during the month of September.

The CDC has published the 2014-2015 recommendations for the prevention and control of influenza < <http://www.cdc.gov/flu/about/season/index.htm> >. CDC recommends an annual flu vaccine for everyone 6 months of age and older. While flu activity is currently low across the United States, it usually begins to increase in October and most commonly peaks between January and March.

Influenza vaccine production begins as early as 6 to 9 months before the beginning of vaccine distribution. Even with this early start, it isn't possible to complete the entire production and distribution process prior to flu season, in part because of the limited number of influenza vaccine manufacturing plants in the United States and the large number of doses that are produced each year. Instead, influenza vaccine distribution takes place in a phased fashion over a number of months. Distribution usually begins in late summer and is complete near the end of November or early in December (Guam has not yet received its allocation of flu vaccine but supplies should begin arriving within a week or so. An announcement will be made when the vaccine has been distributed to local physicians).

While there may be more than one vaccine option for many people to choose from, including high-dose vaccine, intradermal vaccine and the regular flu shot. For healthy children 2 years through 8 years of age (“healthy” in this instance refers to children who do not have an underlying medical condition that predisposes them to influenza complications) nasal spray vaccine is recommended. The most important thing is for all people 6 months and older to get a flu vaccination of some type every year. If you have questions about which vaccine is best for you, talk to your doctor or other health care professional

Everyone 6 months of age and older should get a flu vaccine every season. This recommendation has been in place since 2010 when CDC's Advisory Committee on Immunization Practices (ACIP) voted for “universal” flu vaccination in the United States to expand protection against the flu to more people.

Vaccination to prevent influenza is particularly important for people who are at high risk of serious complications from influenza infection. This includes persons with asthma, diabetes, heart disease or stroke, those 65 years of age or over, pregnant women, those with HIV or AIDS, cancer patients, and children less than 5 years of age.