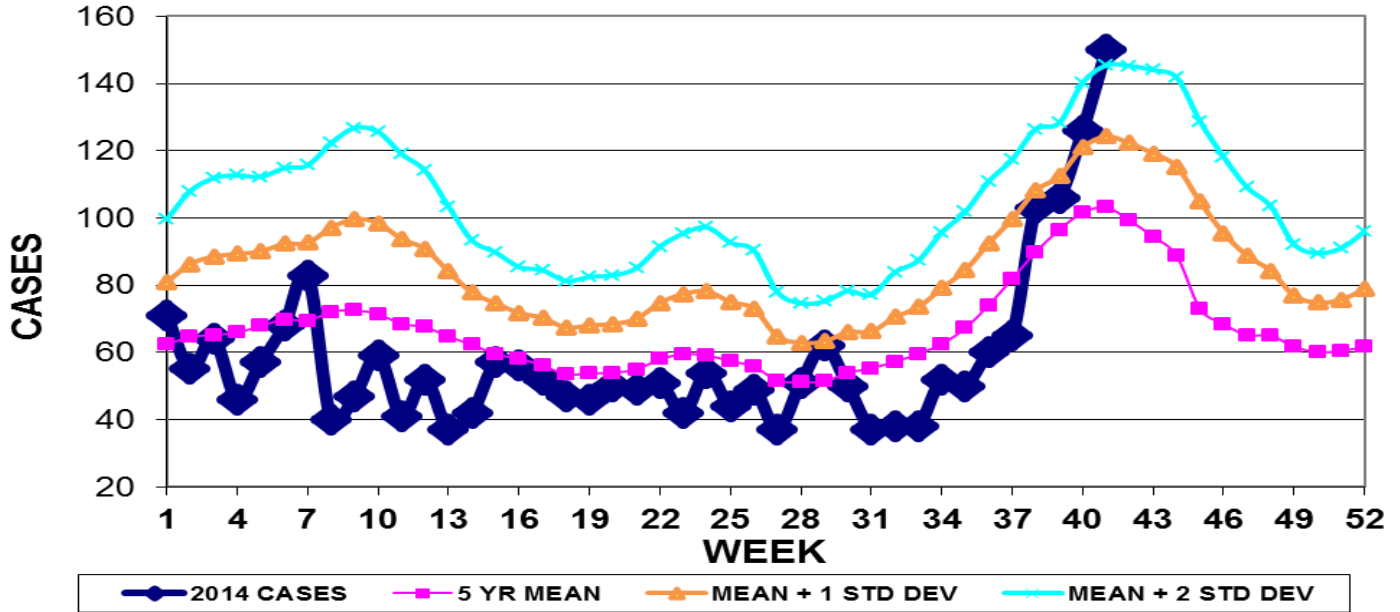


INFECTION CONTROL DEPARTMENT  
 GUAM MEMORIAL HOSPITAL AUTHORITY  
**GUAM EPIDEMIOLOGY NEWSLETTER**

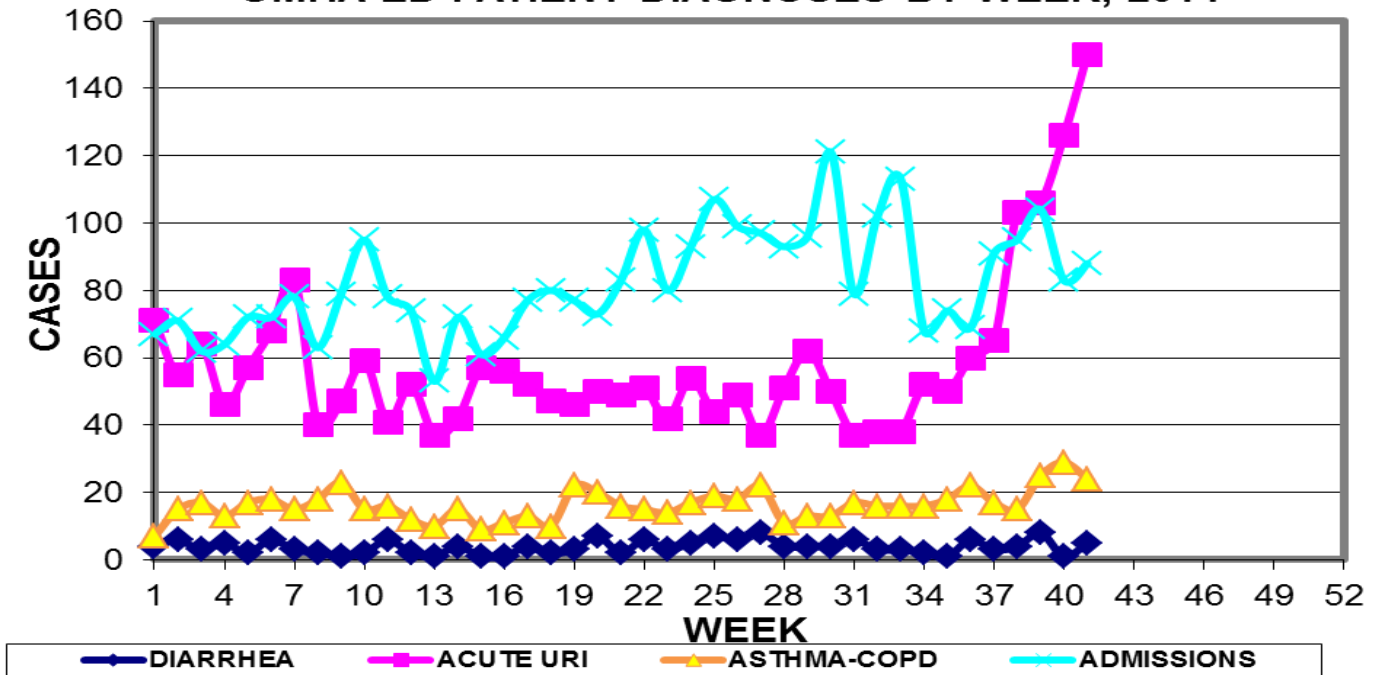
REPORT FOR WEEK ENDING: 10/11/2014 (Reporting week 2014-41)

**GUAM REPORTS**

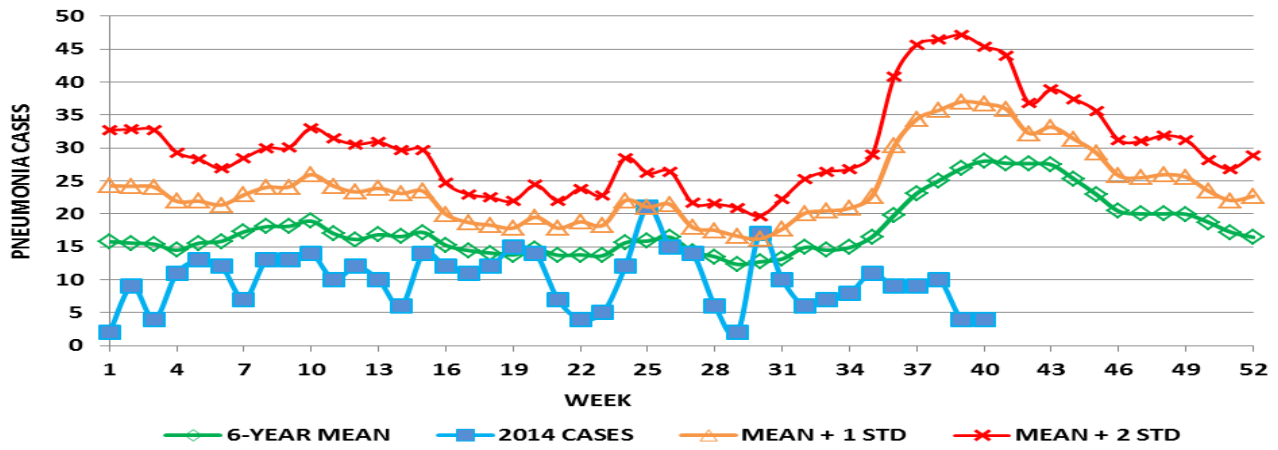
**GUAM ACUTE RESPIRATORY INFECTION SURVEILLANCE 2014;  
 GMHA-EMERGENCY DEPARTMENT PATIENTS BY WEEK SEEN**



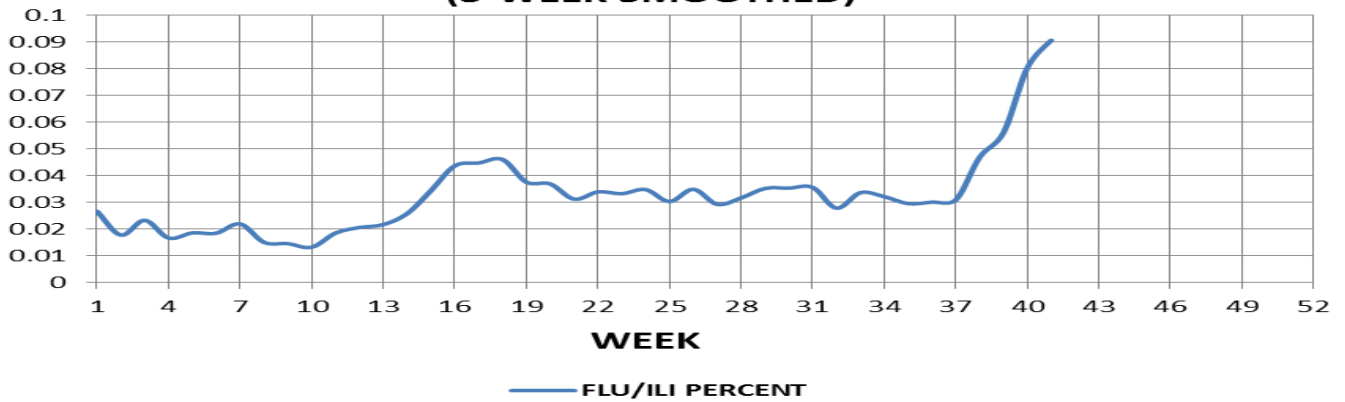
**GUAM SYNDROMIC DISEASE SURVEILLANCE  
 GMHA-ED PATIENT DIAGNOSES BY WEEK, 2014**



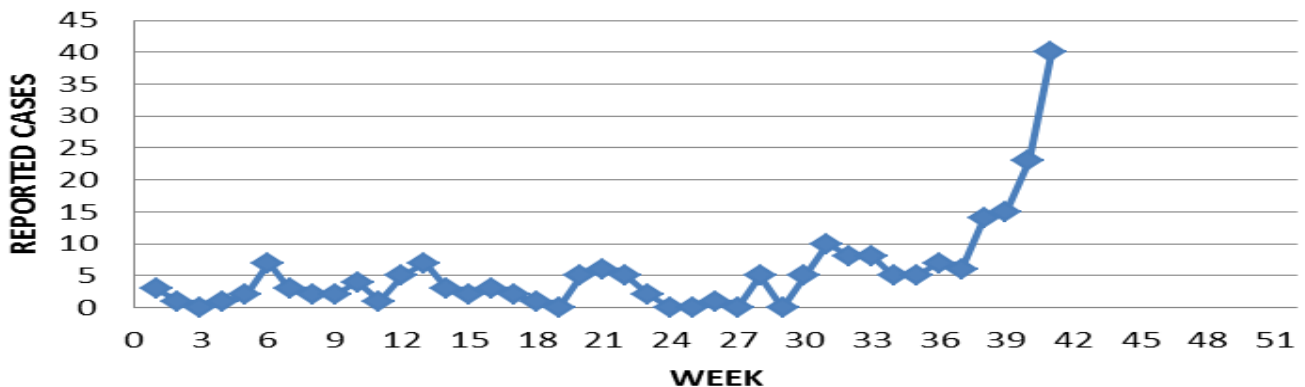
**MEDICAL RECORDS AND INFECTION CONTROL DEPARTMENTS  
GUAM MEMORIAL HOSPITAL AUTHORITY  
HOSPITAL INPATIENT DISCHARGES WITH A DIAGNOSIS OF PNEUMONIA  
BY WEEK DISCHARGED, 2014**



**FLU/ILI AS A PERCENT OF TOTAL PATIENTS  
SEEN, GMHA-ED, 2014  
(3-WEEK SMOOTHED)**



**NUMBER OF CASES OF INFLUENZA AND ILI  
REPORTED BY SENTINEL PHYSICIANS**



Bureau of Communicable Disease Control  
**Guam Department of Public Health & Social Services**  
**H1N1 INFLUENZA SURVEILLANCE, WEEK 41, 2014**  
**NO CASES OF H1N1 REPORTED FOR WEEK 41**  
**Cumulative 2014: 0 civilian & 0 military cases**

INFECTION CONTROL DEPARTMENT  
 GUAM MEMORIAL HOSPITAL AUTHORITY  
**HOSPITALIZATIONS FOR INFLUENZA A BY AGE**  
**AND MORBIDITY REPORTING WEEK**

<b>AGE</b>	<b>32</b>	<b>33</b>	<b>34</b>	<b>35</b>	<b>36</b>	<b>37</b>	<b>38</b>	<b>39</b>	<b>40</b>	<b>41</b>	<b>TOTAL</b>
0-4									1		2
5-18											
19-24											
25-49											
50-64								1	1		3
65+									2		2
<b>TOTAL</b>	<b>0</b>	<b>0</b>	<b>0</b>	<b>0</b>	<b>0</b>	<b>0</b>	<b>0</b>	<b>1</b>	<b>4</b>	<b>0</b>	<b>7</b>

Bureau of Communicable Disease Control  
**Guam Department of Public Health & Social Services**  
**ISLAND-WIDE COMMUNICABLE DISEASE REPORT**

REPORTS RECEIVED FOR THE WEEK ENDING 10/11/2014

<i>Campylobacter</i>	1
<i>Chlamydia trachomatis</i>	19
Conjunctivitis	1
Gonorrhea	1
Hepatitis B	1
Hepatitis C	3
Influenza A	4
Influenza B	3
<i>Klebsiella pneumoniae</i> MDR	2
MRSA	5
RSV	7
Salmonellosis	1
Scabies	4
Streptococcal sore throat	7
Streptococcal disease, other	1
Syphilis, newborn	1
TB, pulmonary	1
VRE	1

□

INFECTION CONTROL DEPARTMENT  
 GUAM MEMORIAL HOSPITAL AUTHORITY  
**GMHA-EMERGENCY DEPARTMENT CLINICAL DIAGNOSES OF INFLUENZA OR  
 FLU-SYNDROME BY WEEK AND PATIENT'S VILLAGE OF RESIDENCE, 2014**  
 (Villages listed geographically from northern-most to southern-most)

VILLAGE	WEEK										TOTAL	2014 RATE
	32	33	34	35	36	37	38	39	40	41		
Yigo	3	4	2	0	4	1	6	5	4	8	76	366.25
Dededo	7	8	3	3	6	5	9	15	14	20	210	462.49
Tamuning	0	3	2	1	3	3	4	1	7	9	95	477.67
Barrigada	0	1	0	1	0	0	4	4	6	1	51	568.75
Mangilao	3	1	1	2	0	5	3	3	8	5	84	547.30
Mongmong-T-M	1	2	0	0	0	1	3	4	5	4	45	652.65
Hagatña	0	0	0	1	1	0	0	1	0	0	13	1224.11
Agaña Heights	0	0	0	0	0	1	0	1	0	1	7	181.96
Sinajana	0	0	1	2	1	0	2	0	0	2	16	610.92
Chalan Pago-Ordot	0	0	1	0	0	0	0	2	2	3	24	348.23
Asan-Maina	0	0	0	0	0	0	1	0	2	0	6	277.91
Piti	0	0	0	0	0	0	0	1	0	0	3	204.22
Santa Rita	0	0	0	0	0	0	1	0	2	0	8	130.14
Agat	0	1	0	0	0	0	1	1	2	3	19	382.45
Yona	1	0	3	2	2	0	3	3	3	7	46	702.61
Talofofo	1	0	1	0	2	0	0	1	3	4	23	746.51
Inarajan	0	0	1	0	1	0	1	2	3	0	15	653.31
Merizo	0	0	0	0	0	0	0	1	0	1	10	535.05
Umatac	0	0	0	0	0	0	1	0	1	0	5	632.91
Tourist	0	0	0	0	0	0	0	0	1	0	8	
Unknown	0	0	0	0	0	0	0	0	0	0	3	
<b>TOTAL</b>	16	20	15	12	20	16	39	45	63	68	770	478.26

NOTE: Rate = cases per 100,000 population for the specified period.

INFLUENZA/ILI ACTIVITY LEVEL - Widespread (More than half of villages affected)  
 (ACTIVITY LEVELS: No activity, Sporadic, Local, Regional, Widespread)

**GUAM ANIMAL DISEASE (ZONOSSES) REPORTS**  
 REPORTS RECEIVED FOR THE WEEK ENDING 10/11/2014

None received