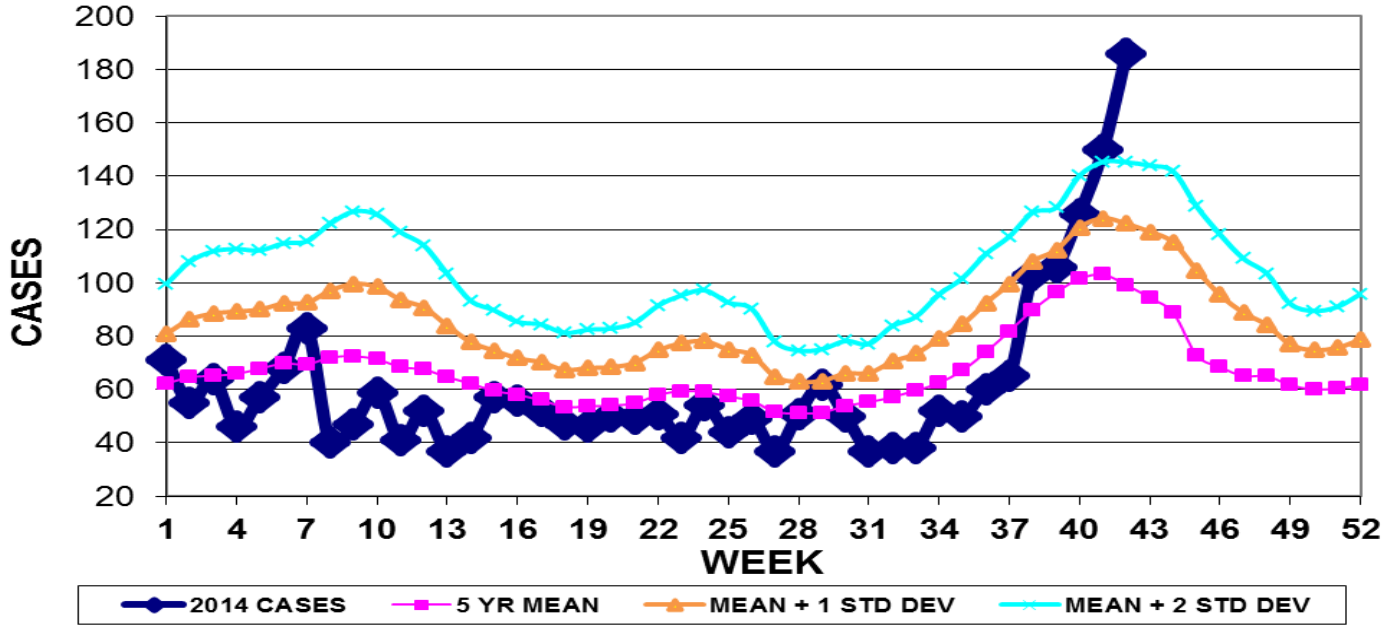


INFECTION CONTROL DEPARTMENT
 GUAM MEMORIAL HOSPITAL AUTHORITY
GUAM EPIDEMIOLOGY NEWSLETTER

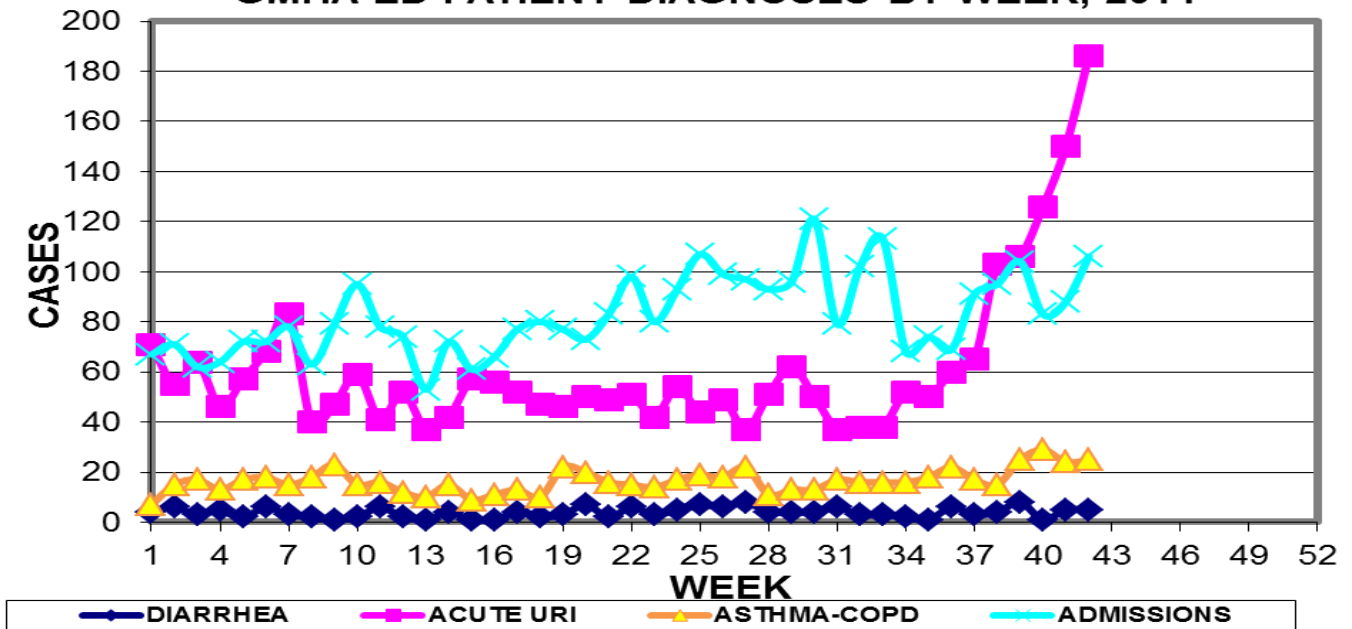
REPORT FOR WEEK ENDING: 10/18/2014 (Reporting week 2014-42)

GUAM REPORTS

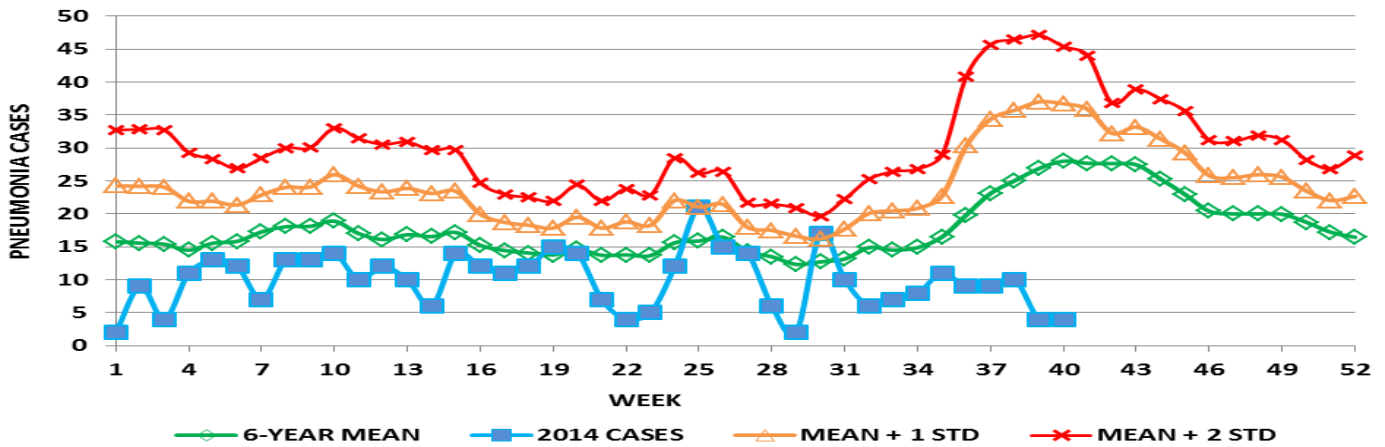
**GUAM ACUTE RESPIRATORY INFECTION SURVEILLANCE 2014;
 GMHA-EMERGENCY DEPARTMENT PATIENTS BY WEEK SEEN**



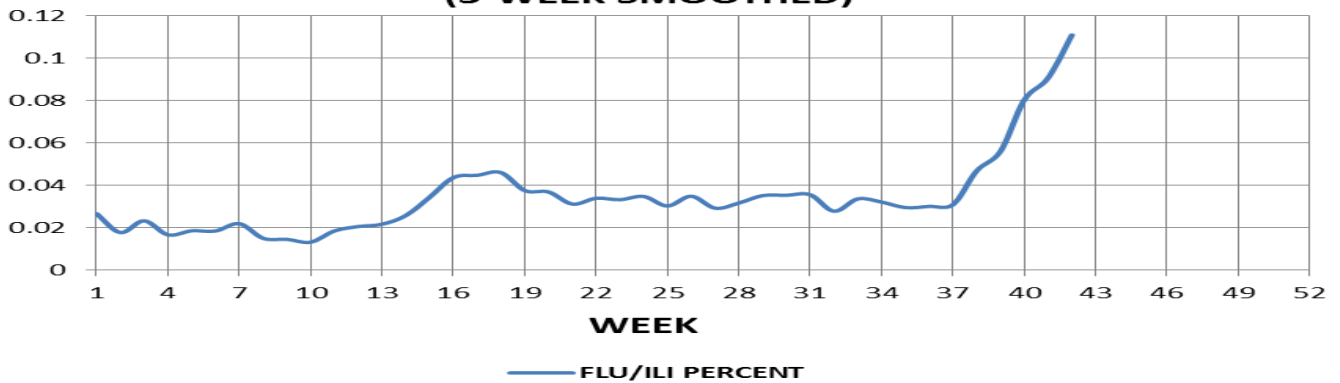
**GUAM SYNDROMIC DISEASE SURVEILLANCE
 GMHA-ED PATIENT DIAGNOSES BY WEEK, 2014**



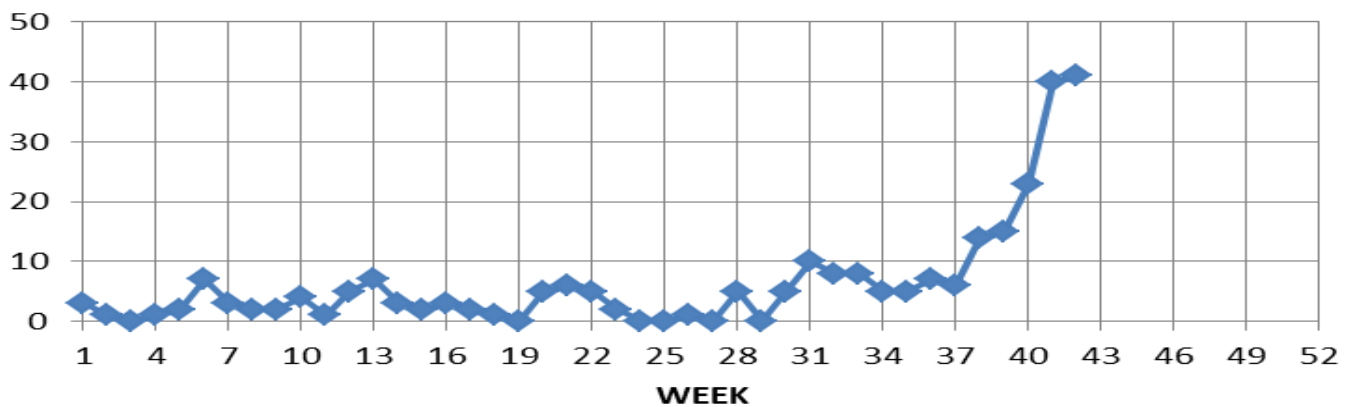
**MEDICAL RECORDS AND INFECTION CONTROL DEPARTMENTS
GUAM MEMORIAL HOSPITAL AUTHORITY
HOSPITAL INPATIENT DISCHARGES WITH A DIAGNOSIS OF PNEUMONIA
BY WEEK DISCHARGED, 2014**



**FLU/ILI AS A PERCENT OF TOTAL PATIENTS
SEEN, GMHA-ED, 2014
(3-WEEK SMOOTHED)**



**NUMBER OF CASES OF INFLUENZA AND ILI REPORTED BY
SENTINEL PHYSICIANS BY WEEK REPORTED, 2014**



Bureau of Communicable Disease Control
Guam Department of Public Health & Social Services
H1N1 INFLUENZA SURVEILLANCE, WEEK 42, 2014
NO CASES OF H1N1 REPORTED FOR WEEK 42
Cumulative 2014: 0 civilian & 0 military cases

INFECTION CONTROL DEPARTMENT
 GUAM MEMORIAL HOSPITAL AUTHORITY
HOSPITALIZATIONS FOR INFLUENZA A BY AGE
AND MORBIDITY REPORTING WEEK

AGE	33	34	35	36	37	38	39	40	41	42	TOTAL
0-4								1			2
5-18											
19-24											
25-49											
50-64							1	1			3
65+								2			2
TOTAL	0	0	0	0	0	0	1	4	0	0	7

Bureau of Communicable Disease Control
Guam Department of Public Health & Social Services
ISLAND-WIDE COMMUNICABLE DISEASE REPORT

REPORTS RECEIVED FOR THE WEEK ENDING 10/18/2014

<i>Chlamydia trachomatis</i>	4
Gonorrhea	1
Hepatitis C	2
Influenza A	5
Influenza B	7
MRSA	3
Scabies	14
Streptococcal sore throat	4
Varicella	1

□

INFECTION CONTROL DEPARTMENT
 GUAM MEMORIAL HOSPITAL AUTHORITY
**GMHA-EMERGENCY DEPARTMENT CLINICAL DIAGNOSES OF INFLUENZA OR
 FLU-SYNDROME BY WEEK AND PATIENT'S VILLAGE OF RESIDENCE, 2014**
 (Villages listed geographically from northern-most to southern-most)

VILLAGE	WEEK										TOTAL	2014 RATE
	33	34	35	36	37	38	39	40	41	42		
Yigo	4	2	0	4	1	6	5	4	8	12	88	424.08
Dededo	8	3	3	6	5	9	15	14	20	24	234	505.35
Tamuning	3	2	1	3	3	4	1	7	9	6	101	507.84
Barrigada	1	0	1	0	0	4	4	6	1	4	55	613.36
Mangilao	1	1	2	0	5	3	3	8	5	6	90	586.40
Mongmong-T-M	2	0	0	0	1	3	4	5	4	4	49	710.66
Hagatña	0	0	1	1	0	0	1	0	0	2	15	1412.43
Agaña Heights	0	0	0	0	1	0	1	0	1	0	7	181.96
Sinajana	0	1	2	1	0	2	0	0	2	1	17	649.10
Chalan Pago-Ordot	0	1	0	0	0	0	2	2	3	8	32	464.31
Asan-Maina	0	0	0	0	0	1	0	2	0	6	12	555.81
Piti	0	0	0	0	0	0	1	0	0	0	3	204.22
Santa Rita	0	0	0	0	0	1	0	2	0	2	10	162.68
Agat	1	0	0	0	0	1	1	2	3	4	23	462.96
Yona	0	3	2	2	0	3	3	3	7	3	49	748.43
Talofofo	0	1	0	2	0	0	1	3	4	2	25	811.42
Inarajan	0	1	0	1	0	1	2	3	0	0	15	653.31
Merizo	0	0	0	0	0	0	1	0	1	2	12	642.05
Umatac	0	0	0	0	0	1	0	1	0	1	6	759.49
Tourist	0	0	0	0	0	0	0	1	0	2	10	
Unknown	0	0	0	0	0	0	0	0	0		3	
TOTAL	20	15	12	20	16	39	45	63	68	89	859	553.54

NOTE: Rate = cases per 100,000 population for the specified period.

INFLUENZA/ILI ACTIVITY LEVEL - Widespread (More than half of villages affected)
 (ACTIVITY LEVELS: No activity, Sporadic, Local, Regional, Widespread)

GUAM ANIMAL DISEASE (ZONOSSES) REPORTS
 REPORTS RECEIVED FOR THE WEEK ENDING 10/18/2014

Anaplasmosis – 1 canine, Babesiosis – 1 canine