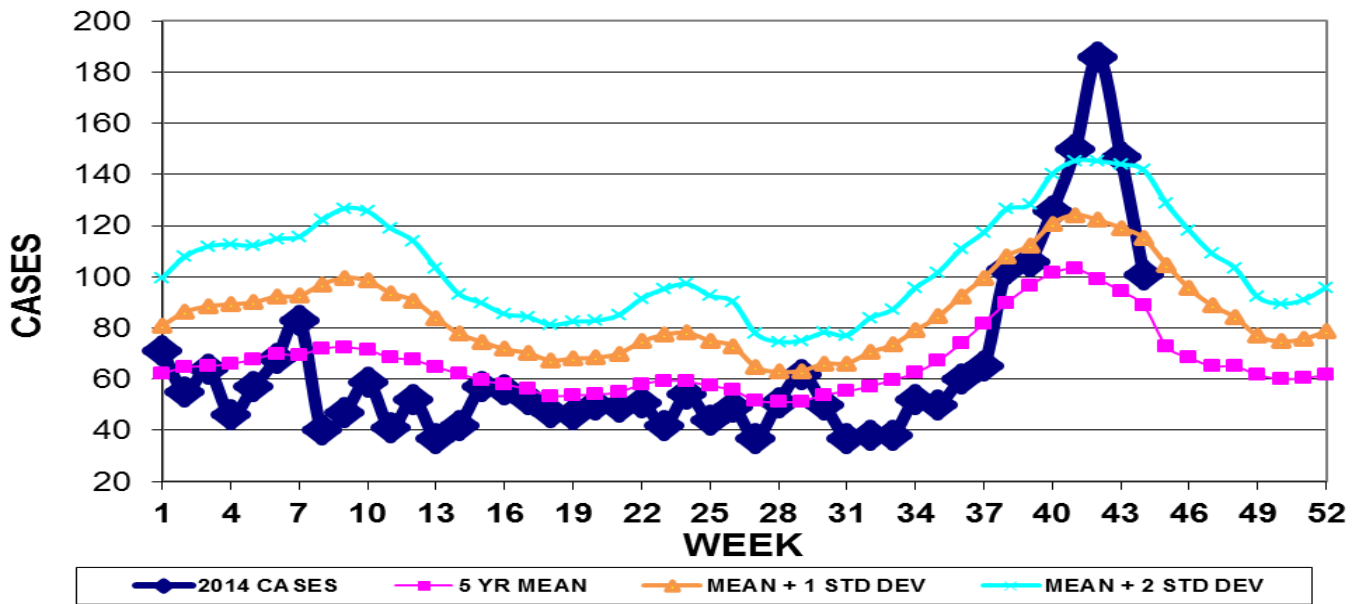


INFECTION CONTROL DEPARTMENT
 GUAM MEMORIAL HOSPITAL AUTHORITY
GUAM EPIDEMIOLOGY NEWSLETTER

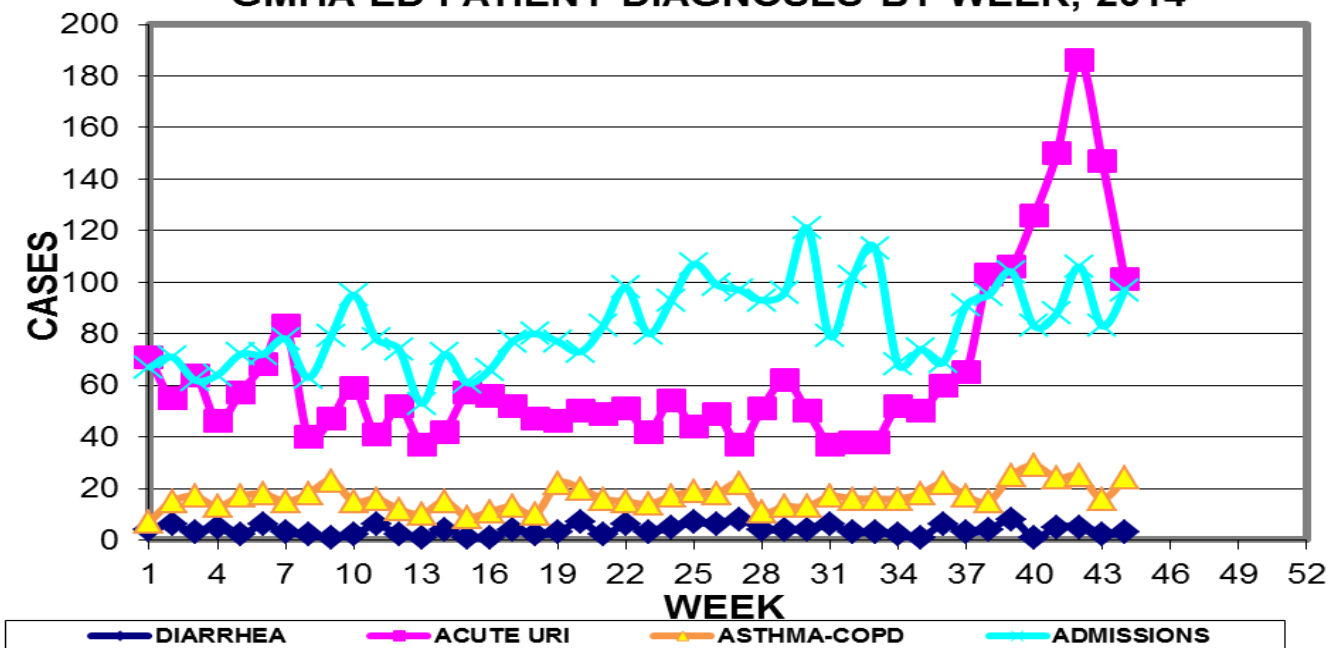
REPORT FOR WEEK ENDING: 11/1/2014 (Reporting week 2014-44)

GUAM REPORTS

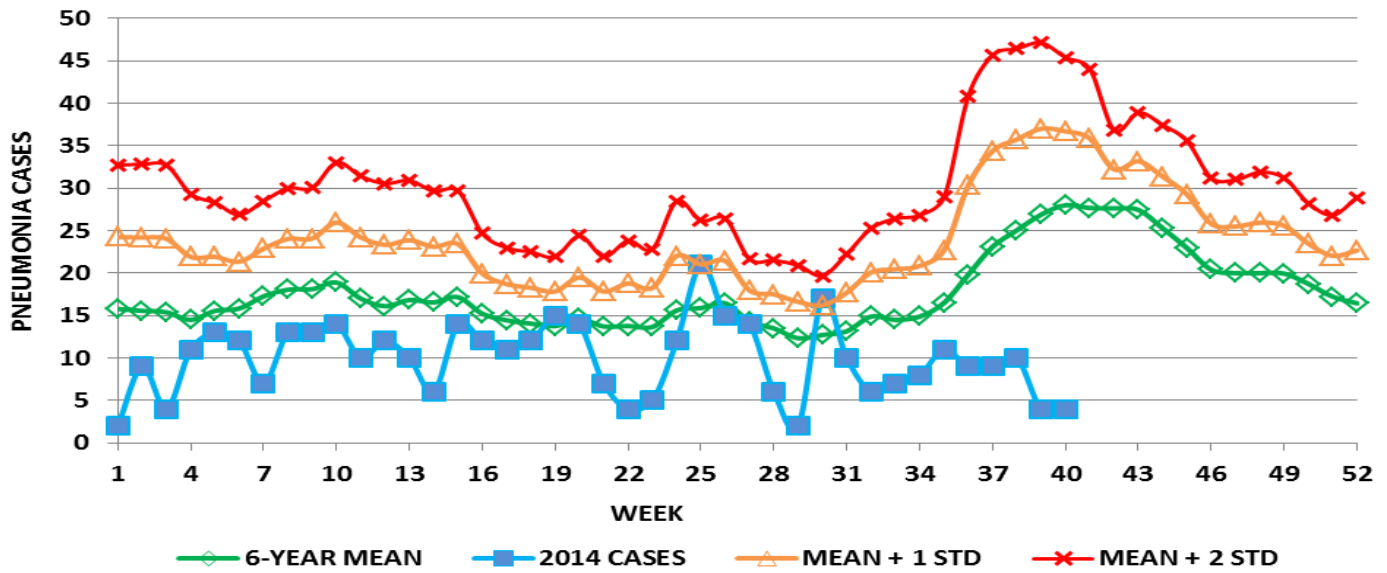
**GUAM ACUTE RESPIRATORY INFECTION SURVEILLANCE 2014;
 GMHA-EMERGENCY DEPARTMENT PATIENTS BY WEEK SEEN**



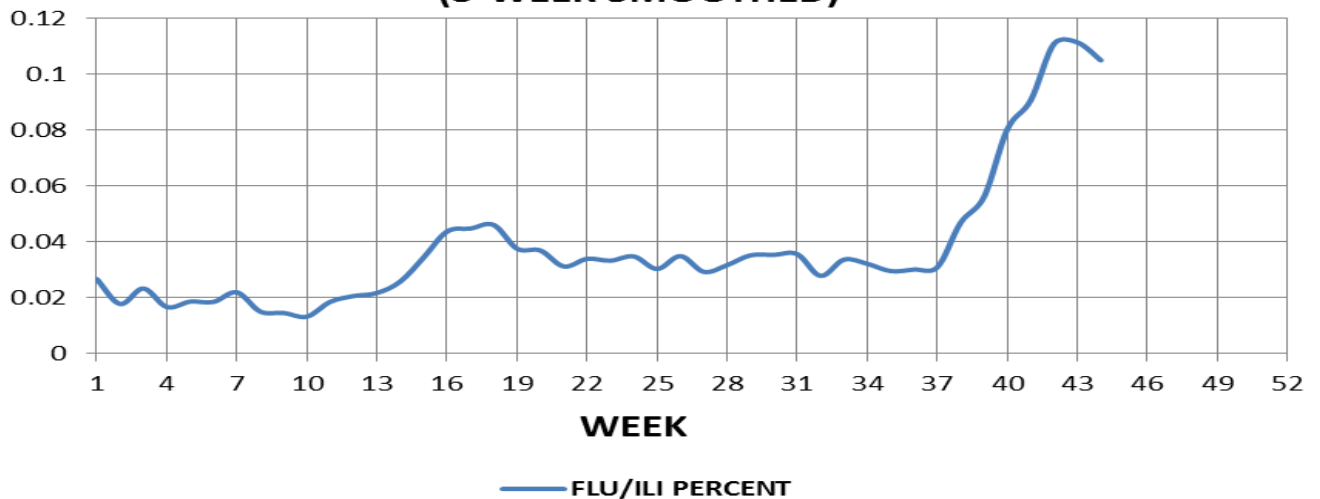
**GUAM SYNDROMIC DISEASE SURVEILLANCE
 GMHA-ED PATIENT DIAGNOSES BY WEEK, 2014**



**MEDICAL RECORDS AND INFECTION CONTROL DEPARTMENTS
 GUAM MEMORIAL HOSPITAL AUTHORITY
 HOSPITAL INPATIENT DISCHARGES WITH A DIAGNOSIS OF PNEUMONIA
 BY WEEK DISCHARGED, 2014**



**FLU/ILI AS A PERCENT OF TOTAL PATIENTS
 SEEN, GMHA-ED, 2014
 (3-WEEK SMOOTHED)**



Bureau of Communicable Disease Control
Guam Department of Public Health & Social Services
H1N1 INFLUENZA SURVEILLANCE, WEEK 44, 2014
NO CASES OF H1N1 REPORTED FOR WEEK 44
Cumulative 2014: 0 civilian & 0 military cases

INFECTION CONTROL DEPARTMENT
 GUAM MEMORIAL HOSPITAL AUTHORITY
HOSPITALIZATIONS FOR INFLUENZA A BY AGE
AND MORBIDITY REPORTING WEEK

| AGE | 35 | 36 | 37 | 38 | 39 | 40 | 41 | 42 | 43 | 44 | TOTAL |
|--------------|-----------|-----------|-----------|-----------|-----------|-----------|-----------|-----------|-----------|-----------|--------------|
| 0-4 | | | | | | 1 | | | | | 2 |
| 5-18 | | | | | | | | | | | |
| 19-24 | | | | | | | | | | | |
| 25-49 | | | | | | | | | | | |
| 50-64 | | | | | 1 | 1 | | | | | 3 |
| 65+ | | | | | | 2 | | | | | 2 |
| TOTAL | 0 | 0 | 0 | 0 | 1 | 4 | 0 | 0 | 0 | 0 | 7 |

Bureau of Communicable Disease Control
Guam Department of Public Health & Social Services
ISLAND-WIDE COMMUNICABLE DISEASE REPORT

REPORTS RECEIVED FOR THE WEEK ENDING 11/1/2014

| | |
|------------------------------|----|
| <i>Chlamydia trachomatis</i> | 10 |
| Conjunctivitis | 8 |
| Gonorrhea | 1 |
| Hepatitis A | 1 |
| Hepatitis B | 1 |
| HIV | 1 |
| Influenza | 3 |
| Influenza, not typed | 1 |
| MRSA | 6 |
| RSV | 2 |
| Scabies | 10 |
| TB, pulmonary | 1 |

□

INFECTION CONTROL DEPARTMENT
 GUAM MEMORIAL HOSPITAL AUTHORITY
**GMHA-EMERGENCY DEPARTMENT CLINICAL DIAGNOSES OF INFLUENZA OR
 FLU-SYNDROME BY WEEK AND PATIENT'S VILLAGE OF RESIDENCE, 2014**
 (Villages listed geographically from northern-most to southern-most)

| VILLAGE | WEEK | | | | | | | | | | TOTAL | 2014 RATE |
|-------------------|-----------|-----------|-----------|-----------|-----------|-----------|-----------|-----------|-----------|-----------|------------|---------------|
| | 35 | 36 | 37 | 38 | 39 | 40 | 41 | 42 | 43 | 44 | | |
| Yigo | 0 | 4 | 1 | 6 | 5 | 4 | 8 | 12 | 10 | 4 | 102 | 491.54 |
| Dededo | 3 | 6 | 5 | 9 | 15 | 14 | 20 | 24 | 22 | 16 | 272 | 599.04 |
| Tamuning | 1 | 3 | 3 | 4 | 1 | 7 | 9 | 6 | 4 | 6 | 111 | 558.13 |
| Barrigada | 1 | 0 | 0 | 4 | 4 | 6 | 1 | 4 | 7 | 3 | 65 | 724.88 |
| Mangilao | 2 | 0 | 5 | 3 | 3 | 8 | 5 | 6 | 7 | 8 | 105 | 684.13 |
| Mongmong-T-M | 0 | 0 | 1 | 3 | 4 | 5 | 4 | 4 | 1 | 7 | 57 | 826.69 |
| Hagatña | 1 | 1 | 0 | 0 | 1 | 0 | 0 | 2 | 0 | 0 | 15 | 1412.43 |
| Agaña Heights | 0 | 0 | 1 | 0 | 1 | 0 | 1 | 0 | 1 | 0 | 8 | 207.95 |
| Sinajana | 2 | 1 | 0 | 2 | 0 | 0 | 2 | 1 | 2 | 1 | 20 | 763.65 |
| Chalan Pago-Ordot | 0 | 0 | 0 | 0 | 2 | 2 | 3 | 8 | 5 | 0 | 37 | 536.85 |
| Asan-Maina | 0 | 0 | 0 | 1 | 0 | 2 | 0 | 6 | 0 | 1 | 13 | 602.13 |
| Piti | 0 | 0 | 0 | 0 | 1 | 0 | 0 | 0 | 1 | 0 | 4 | 272.29 |
| Santa Rita | 0 | 0 | 0 | 1 | 0 | 2 | 0 | 2 | 2 | 0 | 12 | 195.22 |
| Agat | 0 | 0 | 0 | 1 | 1 | 2 | 3 | 4 | 1 | 0 | 24 | 483.09 |
| Yona | 2 | 2 | 0 | 3 | 3 | 3 | 7 | 3 | 5 | 3 | 57 | 870.63 |
| Talofofo | 0 | 2 | 0 | 0 | 1 | 3 | 4 | 2 | 2 | 1 | 28 | 908.80 |
| Inarajan | 0 | 1 | 0 | 1 | 2 | 3 | 0 | 0 | 1 | 0 | 16 | 696.86 |
| Merizo | 0 | 0 | 0 | 0 | 1 | 0 | 1 | 2 | 0 | 0 | 12 | 642.05 |
| Umatac | 0 | 0 | 0 | 1 | 0 | 1 | 0 | 1 | 1 | 0 | 7 | 886.08 |
| Tourist | 0 | 0 | 0 | 0 | 0 | 1 | 0 | 2 | 1 | 0 | 11 | |
| Unknown | 0 | 0 | 0 | 0 | 0 | 0 | 0 | | | 0 | 3 | |
| TOTAL | 12 | 20 | 16 | 39 | 45 | 63 | 68 | 89 | 73 | 50 | 982 | 609.93 |

NOTE: Rate = cases per 100,000 population for the specified period.

INFLUENZA/ILI ACTIVITY LEVEL - Widespread (More than half of villages affected)
 (ACTIVITY LEVELS: No activity, Sporadic, Local, Regional, Widespread)

GUAM ANIMAL DISEASE (ZONOSSES) REPORTS
 REPORTS RECEIVED FOR THE WEEK ENDING 11/1/2014

None