

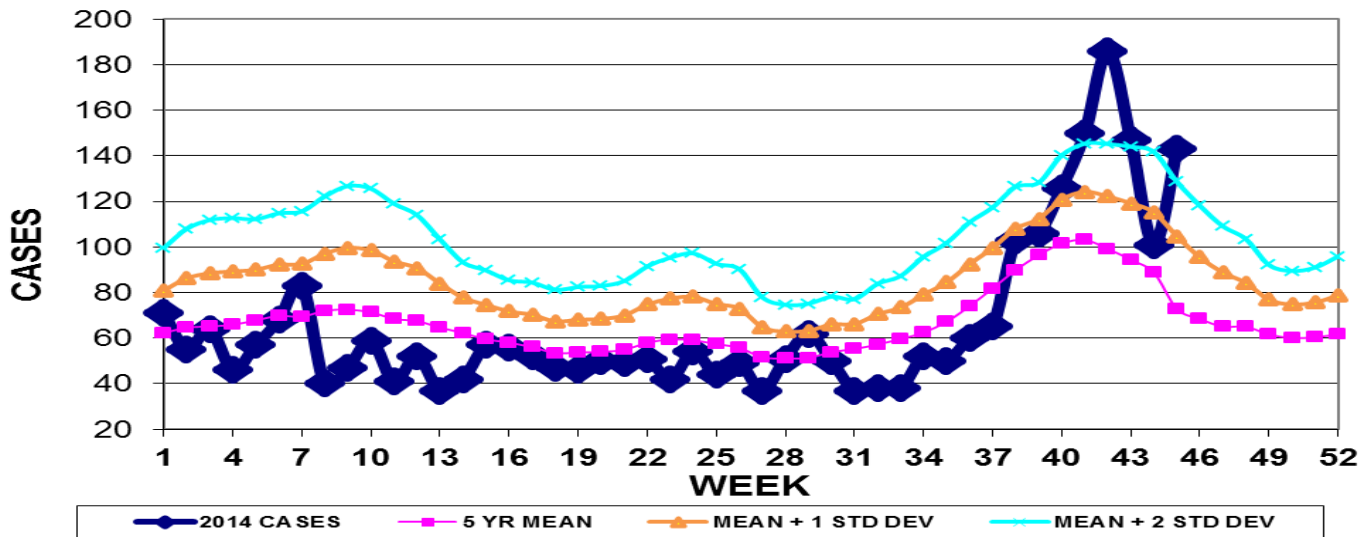
INFECTION CONTROL DEPARTMENT  
 GUAM MEMORIAL HOSPITAL AUTHORITY  
**GUAM EPIDEMIOLOGY NEWSLETTER**

REPORT FOR WEEK ENDING: 11/22/2014 (Reporting week 2014-47)

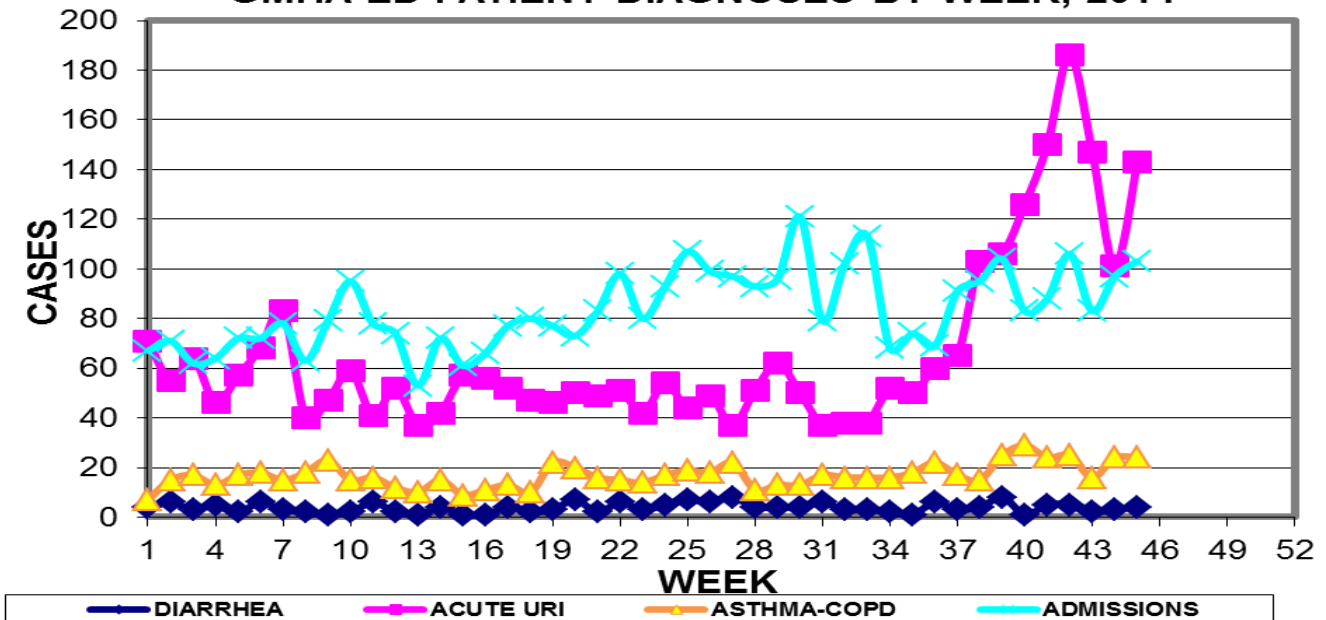
**NOTE: WEEK 47 HOSPITAL EMERGENCY DEPARTMENT DATA  
 UNAVAILABLE AT THIS TIME DUE TO COMPUTER PROBLEMS**

**GUAM REPORTS**

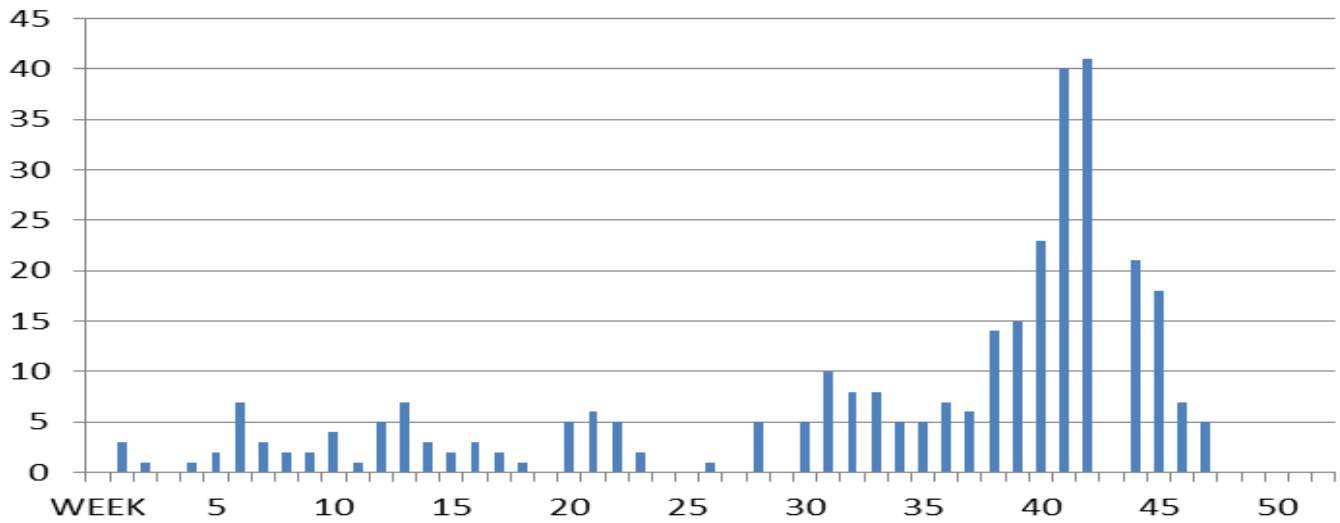
**GUAM ACUTE RESPIRATORY INFECTION SURVEILLANCE 2014;  
 GMHA-EMERGENCY DEPARTMENT PATIENTS BY WEEK SEEN**



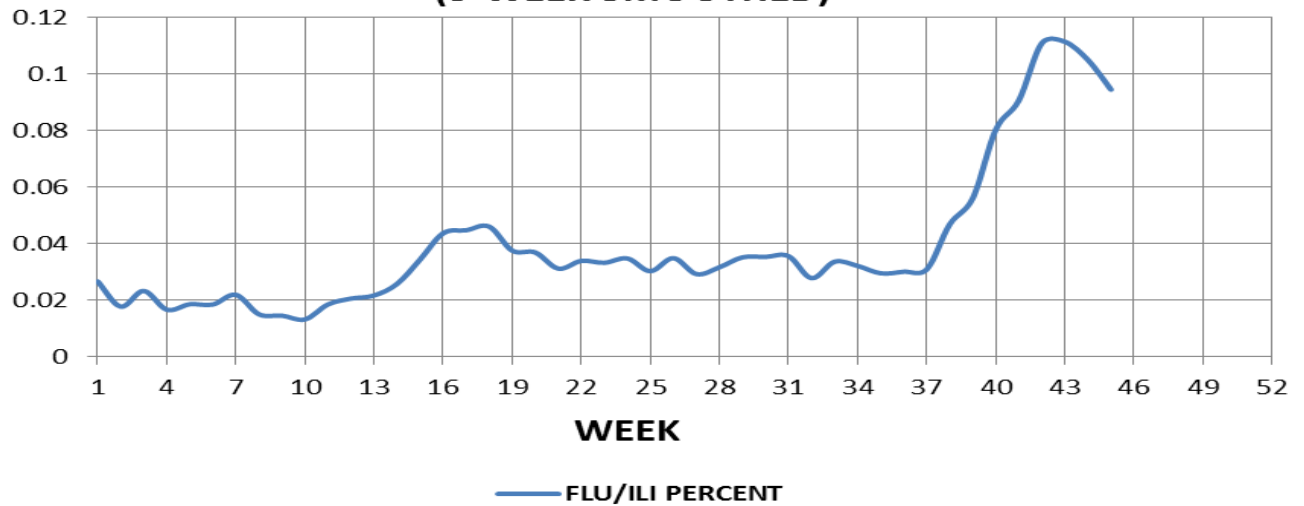
**GUAM SYNDROMIC DISEASE SURVEILLANCE  
 GMHA-ED PATIENT DIAGNOSES BY WEEK, 2014**



**NUMBER OF CASES OF INFLUENZA AND ILI REPORTED BY SENTINEL PHYSICIANS BY WEEK REPORTED, 2014**



**FLU/ILI AS A PERCENT OF TOTAL PATIENTS SEEN, GMHA-ED, 2014  
(3-WEEK SMOOTHED)**



Bureau of Communicable Disease Control  
 Guam Department of Public Health & Social Services  
**H1N1 INFLUENZA SURVEILLANCE, WEEK 47, 2014**  
 NO CASES OF H1N1 REPORTED FOR WEEK 47  
**Cumulative 2014: 0 civilian & 0 military cases**

INFECTION CONTROL DEPARTMENT  
 GUAM MEMORIAL HOSPITAL AUTHORITY  
**HOSPITALIZATIONS FOR INFLUENZA A BY AGE**  
**AND MORBIDITY REPORTING WEEK**

AGE	38	39	40	41	42	43	44	45	46	47	TOTAL
0-4			1								2
5-18											
19-24											
25-49											
50-64		1	1								3
65+			2								2
TOTAL	0	1	4	0	0	0	0	0	0	0	7

Bureau of Communicable Disease Control  
 Guam Department of Public Health & Social Services  
**ISLAND-WIDE COMMUNICABLE DISEASE REPORT**  
 REPORTS RECEIVED FOR THE WEEK ENDING 11/22/2014

(Includes all provider reports as well as  
 GMHA ED patients and hospital admissions)

<i>Achromobacter</i> species MDR	1
<i>Chlamydia trachomatis</i>	28
<i>Clostridium difficile</i>	1
Conjunctivitis	11
<i>E. coli</i> MDR	2
<i>E. coli</i> ESBL+	2
Gonorrhea	1
Hepatitis A	1
Hepatitis B	1
Hepatitis C	3
Hepatitis, type unspecified	1
HFMD	4
Leptospirosis	2
MRSA	2
RSV	10
Scabies	8
Streptococcal sore throat	2
Streptococcal disease, other	2
Varicella	1
VRE	1

□

INFECTION CONTROL DEPARTMENT  
 GUAM MEMORIAL HOSPITAL AUTHORITY  
**GMHA-EMERGENCY DEPARTMENT CLINICAL DIAGNOSES OF INFLUENZA OR  
 FLU-SYNDROME BY WEEK AND PATIENT'S VILLAGE OF RESIDENCE, 2014**  
 (Villages listed geographically from northern-most to southern-most)

VILLAGE	WEEK										TOTAL	2014 RATE
	38	39	40	41	42	43	44	45	46	47		
Yigo	6	5	4	8	12	10	4	9			111	534.91
Dededo	9	15	14	20	24	22	16	21			293	645.29
Tamuning	4	1	7	9	6	4	6	5			116	583.27
Barrigada	4	4	6	1	4	7	3	4			69	769.49
Mangilao	3	3	8	5	6	7	8	4			109	710.19
Mongmong-T-M	3	4	5	4	4	1	7	2			59	855.69
Hagatña	0	1	0	0	2	0	0	0			15	1412.43
Agaña Heights	0	1	0	1	0	1	0	1			9	233.95
Sinajana	2	0	0	2	1	2	1	4			24	916.38
Chalan Pago-Ordot	0	2	2	3	8	5	0	2			39	565.89
Asan-Maina	1	0	2	0	6	0	1	0			13	602.13
Piti	0	1	0	0	0	1	0	0			4	272.29
Santa Rita	1	0	2	0	2	2	0	0			12	195.22
Agat	1	1	2	3	4	1	0	2			26	523.25
Yona	3	3	3	7	3	5	3	3			60	916.45
Talofof	0	1	3	4	2	2	1	0			28	908.80
Inarajan	1	2	3	0	0	1	0	2			18	783.97
Merizo	0	1	0	1	2	0	0	0			12	642.05
Umatac	1	0	1	0	1	1	0	2			9	1139.24
Tourist	0	0	1	0	2	1	0	0			11	
Unknown	0	0	0	0			0	0			3	
<b>TOTAL</b>	<b>39</b>	<b>45</b>	<b>63</b>	<b>68</b>	<b>89</b>	<b>73</b>	<b>50</b>	<b>61</b>			<b>1043</b>	<b>647.82</b>

NOTE: Rate = cases per 100,000 population for the specified period.

INFLUENZA/ILI ACTIVITY LEVEL (Week 45) - Widespread (More than half of villages affected)  
 (ACTIVITY LEVELS: No activity, Sporadic, Local, Regional, Widespread)

**GUAM ANIMAL DISEASE (ZONOSSES) REPORTS**  
 REPORTS RECEIVED FOR THE WEEK ENDING 11/22/2014

Anaplasmosis – 2 canine, Ehrlichiosis – 1 canine