

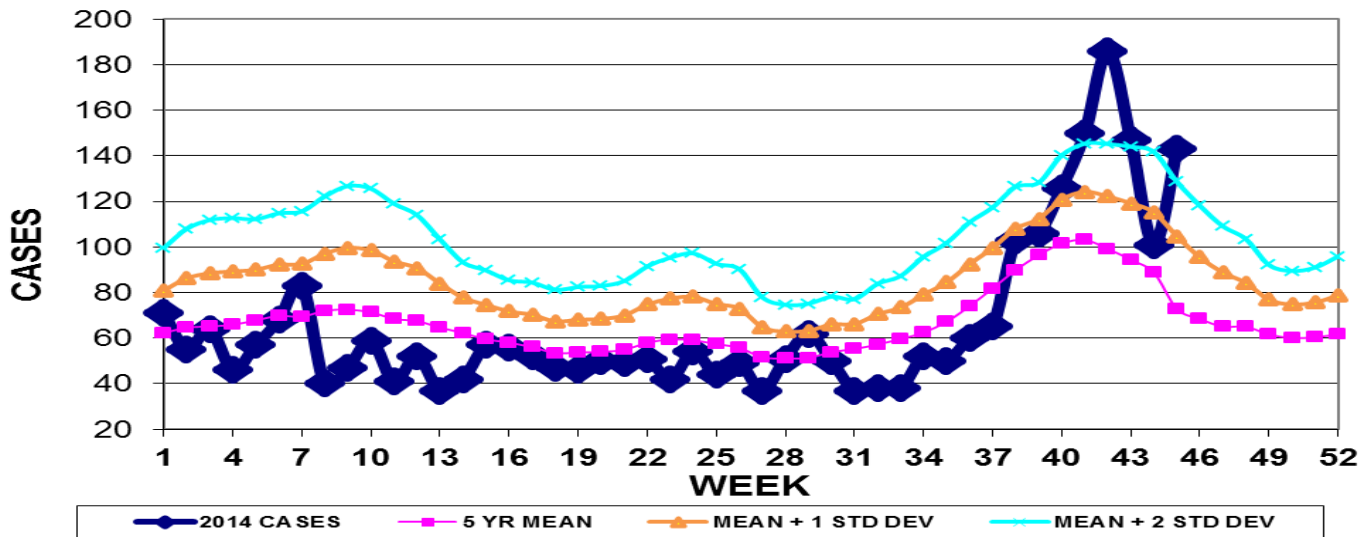
INFECTION CONTROL DEPARTMENT
 GUAM MEMORIAL HOSPITAL AUTHORITY
GUAM EPIDEMIOLOGY NEWSLETTER

REPORT FOR WEEK ENDING: 11/29/2014 (Reporting week 2014-48)

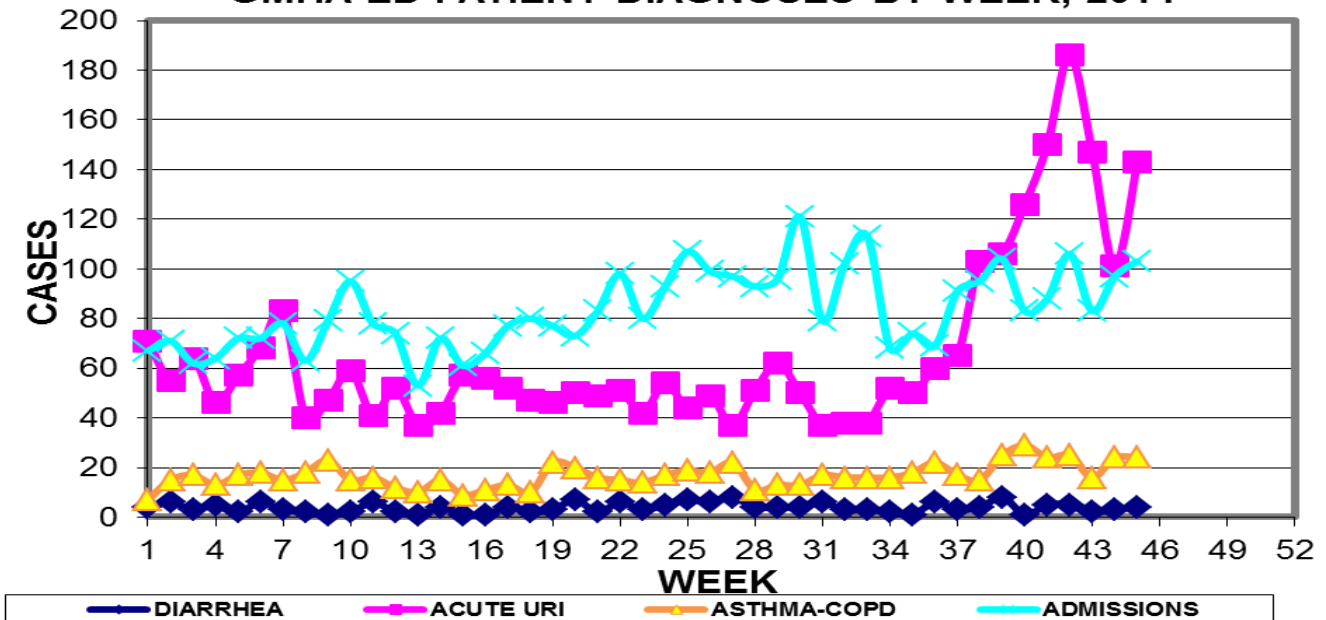
**NOTE: WEEK 48 HOSPITAL EMERGENCY DEPARTMENT DATA
 UNAVAILABLE AT THIS TIME DUE TO COMPUTER PROBLEMS**

GUAM REPORTS

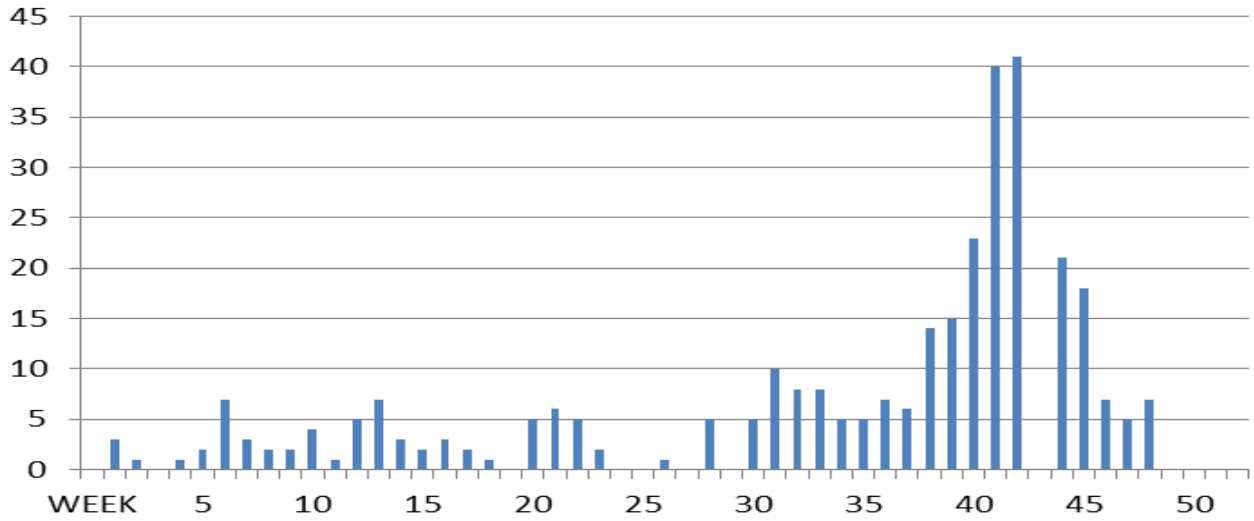
**GUAM ACUTE RESPIRATORY INFECTION SURVEILLANCE 2014;
 GMHA-EMERGENCY DEPARTMENT PATIENTS BY WEEK SEEN**



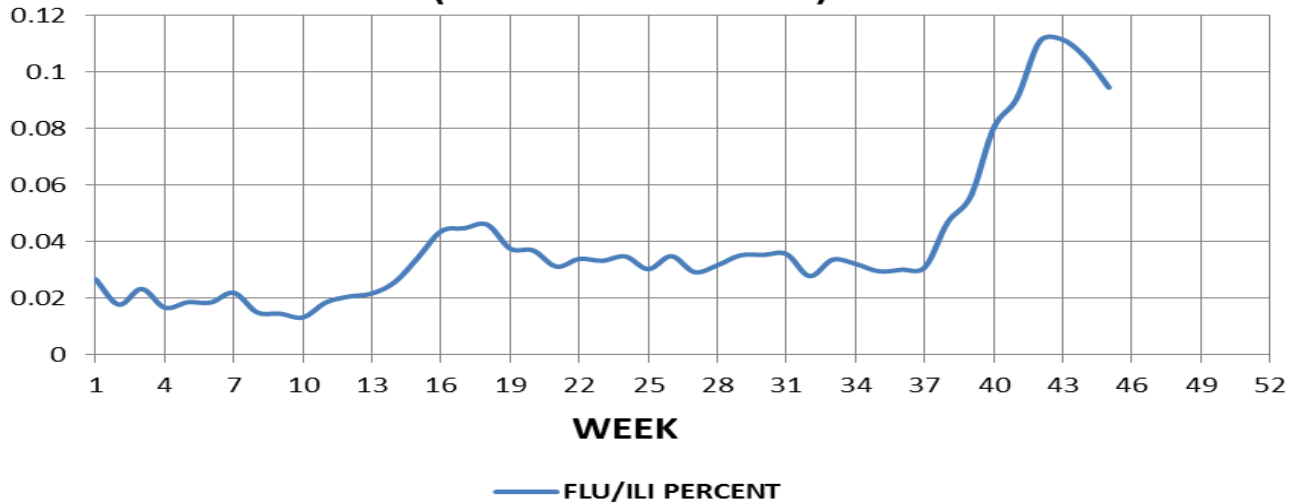
**GUAM SYNDROMIC DISEASE SURVEILLANCE
 GMHA-ED PATIENT DIAGNOSES BY WEEK, 2014**



NUMBER OF CASES OF INFLUENZA AND ILI REPORTED BY SENTINEL PHYSICIANS BY WEEK REPORTED, 2014



**FLU/ILI AS A PERCENT OF TOTAL PATIENTS SEEN, GMHA-ED, 2014
(3-WEEK SMOOTHED)**



Bureau of Communicable Disease Control
 Guam Department of Public Health & Social Services
H1N1 INFLUENZA SURVEILLANCE, WEEK 48, 2014
 NO CASES OF H1N1 REPORTED FOR WEEK 48
Cumulative 2014: 0 civilian & 0 military cases

INFECTION CONTROL DEPARTMENT
 GUAM MEMORIAL HOSPITAL AUTHORITY
HOSPITALIZATIONS FOR INFLUENZA A BY AGE
AND MORBIDITY REPORTING WEEK

AGE	39	40	41	42	43	44	45	46	47	48	TOTAL
0-4		1									2
5-18											
19-24											
25-49											
50-64	1	1									3
65+		2									2
TOTAL	1	4	0	0	0	0	0	0	0	0	7

Bureau of Communicable Disease Control
 Guam Department of Public Health & Social Services
ISLAND-WIDE COMMUNICABLE DISEASE REPORT
 REPORTS RECEIVED FOR THE WEEK ENDING 11/29/2014

(Includes private provider reports as well as
 GMHA ED patients and hospital admissions)

<i>Chlamydia trachomatis</i>	15
<i>Clostridium difficile</i>	1
<i>E. coli</i> MDR	1
<i>E. coli</i> ESBL+	1
Gonorrhea	2
Hepatitis B	3
Hepatitis C	4
MRSA	7
RSV	5
Scabies	10
<i>Shigella sonnei</i>	1
Streptococcal sore throat	1
Streptococcal disease, other	1
Varicella	1
VRE	1

□

INFECTION CONTROL DEPARTMENT
 GUAM MEMORIAL HOSPITAL AUTHORITY
**GMHA-EMERGENCY DEPARTMENT CLINICAL DIAGNOSES OF INFLUENZA OR
 FLU-SYNDROME BY WEEK AND PATIENT'S VILLAGE OF RESIDENCE, 2014**
 (Villages listed geographically from northern-most to southern-most)

VILLAGE	WEEK										TOTAL	2014 RATE
	39	40	41	42	43	44	45	46	47	48		
Yigo	5	4	8	12	10	4	9				111	534.91
Dededo	15	14	20	24	22	16	21				293	645.29
Tamuning	1	7	9	6	4	6	5				116	583.27
Barrigada	4	6	1	4	7	3	4				69	769.49
Mangilao	3	8	5	6	7	8	4				109	710.19
Mongmong-T-M	4	5	4	4	1	7	2				59	855.69
Hagatña	1	0	0	2	0	0	0				15	1412.43
Agaña Heights	1	0	1	0	1	0	1				9	233.95
Sinajana	0	0	2	1	2	1	4				24	916.38
Chalan Pago-Ordot	2	2	3	8	5	0	2				39	565.89
Asan-Maina	0	2	0	6	0	1	0				13	602.13
Piti	1	0	0	0	1	0	0				4	272.29
Santa Rita	0	2	0	2	2	0	0				12	195.22
Agat	1	2	3	4	1	0	2				26	523.25
Yona	3	3	7	3	5	3	3				60	916.45
Talofofo	1	3	4	2	2	1	0				28	908.80
Inarajan	2	3	0	0	1	0	2				18	783.97
Merizo	1	0	1	2	0	0	0				12	642.05
Umatac	0	1	0	1	1	0	2				9	1139.24
Tourist	0	1	0	2	1	0	0				11	
Unknown	0	0	0			0	0				3	
TOTAL	45	63	68	89	73	50	61				1043	647.82

NOTE: Rate = cases per 100,000 population for the specified period.

INFLUENZA/ILI ACTIVITY LEVEL (Week 45) - Widespread (More than half of villages affected)
 (ACTIVITY LEVELS: No activity, Sporadic, Local, Regional, Widespread)

GUAM ANIMAL DISEASE (ZONOSSES) REPORTS
 REPORTS RECEIVED FOR THE WEEK ENDING 11/29/2014

Babesiosis – 1 canine, Ehrlichiosis – 1 canine