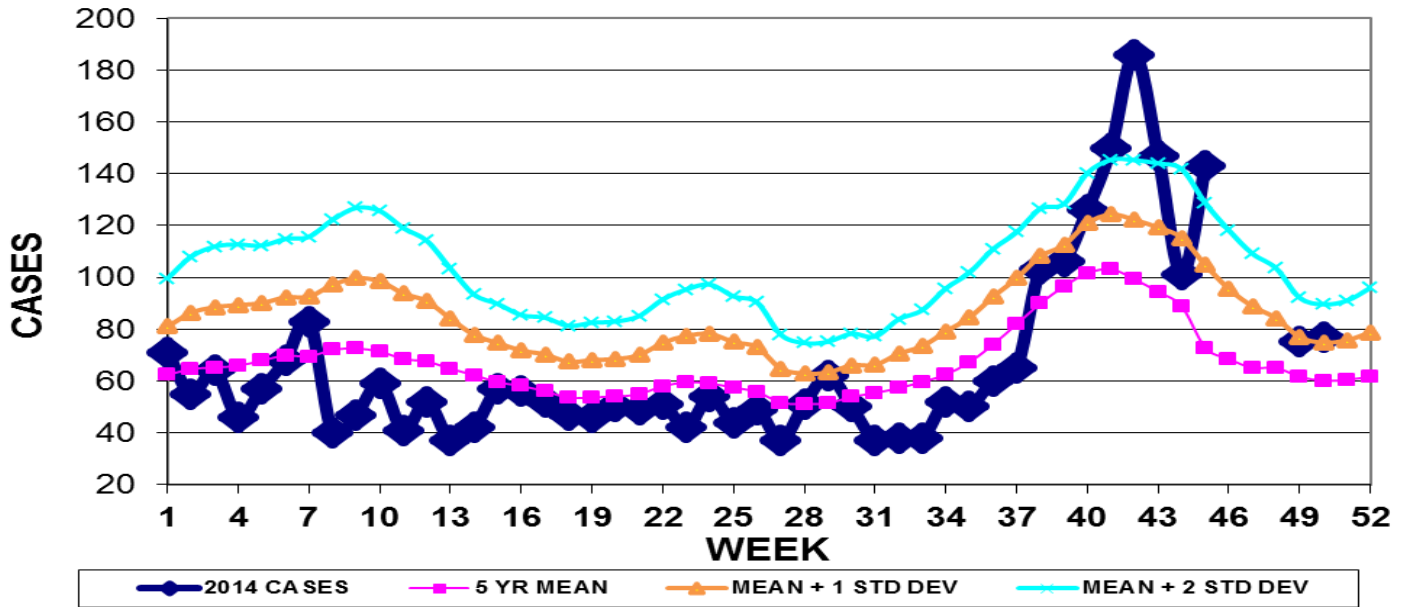


INFECTION CONTROL DEPARTMENT
 GUAM MEMORIAL HOSPITAL AUTHORITY
GUAM EPIDEMIOLOGY NEWSLETTER
 REPORT FOR WEEK ENDING: 12/13/2014 (Reporting week 2014-50)

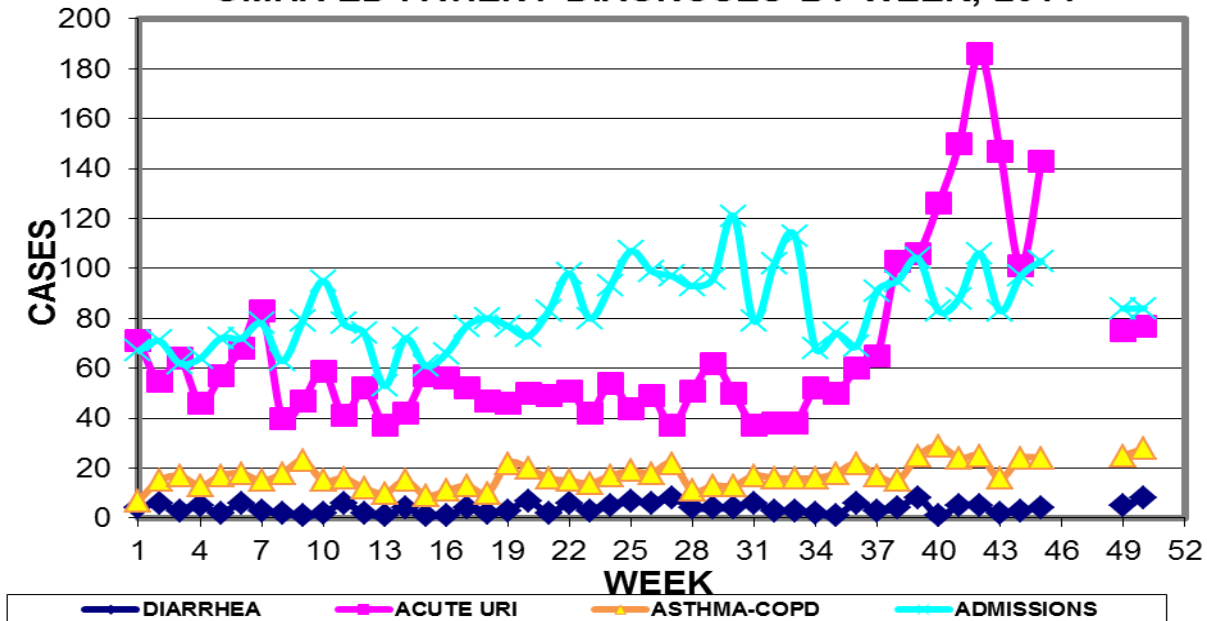
GUAM REPORTS

**GUAM ACUTE RESPIRATORY INFECTION SURVEILLANCE 2014;
 GMHA-EMERGENCY DEPARTMENT PATIENTS BY WEEK SEEN**

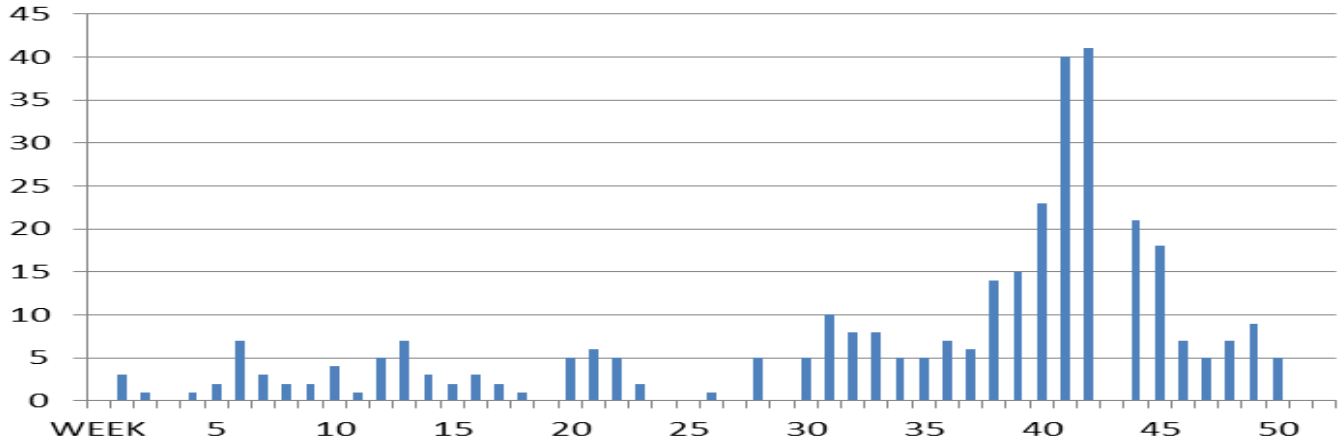


NOTE: GMHA-ED data not available for weeks 46, 47, and 48

**GUAM SYNDROMIC DISEASE SURVEILLANCE
 GMHA-ED PATIENT DIAGNOSES BY WEEK, 2014**



**NUMBER OF CASES OF INFLUENZA AND ILI REPORTED BY
SENTINEL PHYSICIANS BY WEEK REPORTED, 2014**



Bureau of Communicable Disease Control
Guam Department of Public Health & Social Services
H1N1 INFLUENZA SURVEILLANCE, WEEK 50, 2014
NO CASES OF H1N1 REPORTED FOR WEEK 50
Cumulative 2014: 0 civilian & 0 military cases

INFECTION CONTROL DEPARTMENT
GUAM MEMORIAL HOSPITAL AUTHORITY
**HOSPITALIZATIONS FOR INFLUENZA A BY AGE
AND MORBIDITY REPORTING WEEK**

AGE	40	41	42	43	44	45	46	47	48	49	50	TOTAL
0-4	1											2
5-18												
19-24												
25-49												
50-64	1											3
65+	2											2
TOTAL	4	0	0	0	0	0	0	0	0	0	0	7

Bureau of Communicable Disease Control
Guam Department of Public Health & Social Services
ISLAND-WIDE COMMUNICABLE DISEASE REPORT
REPORTS RECEIVED FOR THE WEEK ENDING 12/13/2014

(Includes private provider reports as well as
GMHA ED patients and hospital admissions)

<i>Acinetobacter pneumoniae</i> MDR	1
<i>E. coli</i> MDR	2
<i>E. coli</i> ESBL+	2
<i>E. coli</i> MDR, ESBL+	1
Hepatitis B	1
Hepatitis C	1
<i>Klebsiella pneumoniae</i> MDR	1
MRSA	14
RSV	5
Scabies	2
<i>Shigella flexneri</i>	1
Streptococcal sore throat	1
Streptococcal disease, other than SST	9
VRE	1

□

INFLUENZA/ILI ACTIVITY LEVEL (Week 50) - Widespread
(ACTIVITY LEVELS: No activity, Sporadic, Local, Regional, Widespread)

GUAM ANIMAL DISEASE (ZONOSSES) REPORTS

REPORTS RECEIVED FOR THE WEEK ENDING 12/13/2014

Anaplasmosis – 1 canine, Ehrlichiosis – 1 canine

INFECTION CONTROL DEPARTMENT
 GUAM MEMORIAL HOSPITAL AUTHORITY
**GMHA-EMERGENCY DEPARTMENT CLINICAL DIAGNOSES OF INFLUENZA OR
 FLU-SYNDROME BY WEEK AND PATIENT'S VILLAGE OF RESIDENCE, 2014**
 (Villages listed geographically from northern-most to southern-most)

WEEK

VILLAGE	41	42	43	44	45	46	47	48	49	50	TOTAL	2014 RATE
Yigo	8	12	10	4	9	NA	NA	NA	5	4	120	578.29
Dededo	20	24	22	16	21	NA	NA	NA	9	12	314	691.54
Tamuning	9	6	4	6	5	NA	NA	NA	2	3	121	608.41
Barrigada	1	4	7	3	4	NA	NA	NA	1	1	71	791.79
Mangilao	5	6	7	8	4	NA	NA	NA	3	3	115	749.28
Mongmong-T-M	4	4	1	7	2	NA	NA	NA	3	4	66	957.22
Hagatña	0	2	0	0	0	NA	NA	NA	0	0	15	1412.43
Agaña Heights	1	0	1	0	1	NA	NA	NA	0	0	9	233.95
Sinajana	2	1	2	1	4	NA	NA	NA	4	1	29	1107.29
Chalan Pago-Ordot	3	8	5	0	2	NA	NA	NA	1	2	42	609.40
Asan-Maina	0	6	0	1	0	NA	NA	NA	0	0	13	602.13
Piti	0	0	1	0	0	NA	NA	NA	0	0	4	272.29
Santa Rita	0	2	2	0	0	NA	NA	NA	0	0	12	195.22
Agat	3	4	1	0	2	NA	NA	NA	1	2	29	583.74
Yona	7	3	5	3	3	NA	NA	NA	0	0	60	916.45
Talofofo	4	2	2	1	0	NA	NA	NA	0	1	28	908.80
Inarajan	0	0	1	0	2	NA	NA	NA	0	0	18	783.97
Merizo	1	2	0	0	0	NA	NA	NA	0	1	13	695.56
Umatac	0	1	1	0	2	NA	NA	NA	0	0	9	1139.24
Tourist	0	2	1	0	0	NA	NA	NA	0	0	11	
Unknown	0			0	0	NA	NA	NA	0	0	3	
TOTAL	68	89	73	50	61	NA	NA	NA	29	34	1106	686.95

NOTE: Rate = cases per 100,000 population for the specified period.
 NA = Data not available

NOTE; An interactive map of current disease outbreaks in the Pacific prepared by the Secretariat of the Pacific Community (SPC) is available at <http://www.spc.int/phd/epidemics/>