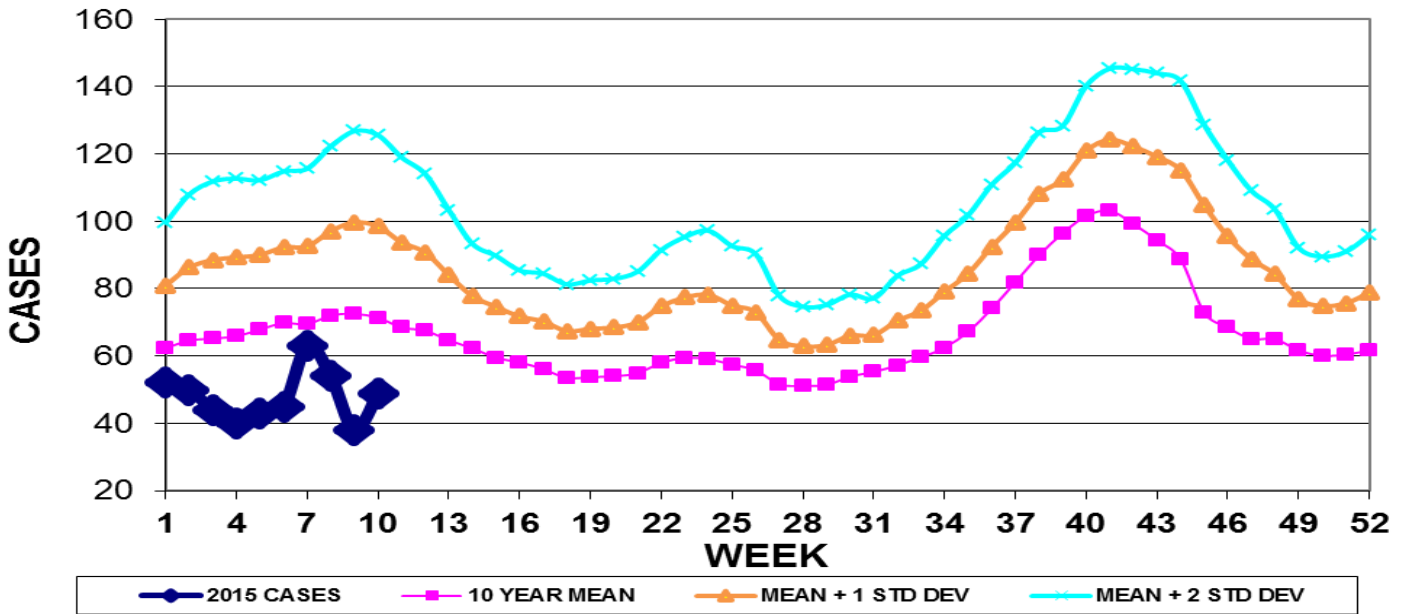


INFECTION CONTROL DEPARTMENT  
 GUAM MEMORIAL HOSPITAL AUTHORITY  
**GUAM EPIDEMIOLOGY NEWSLETTER**

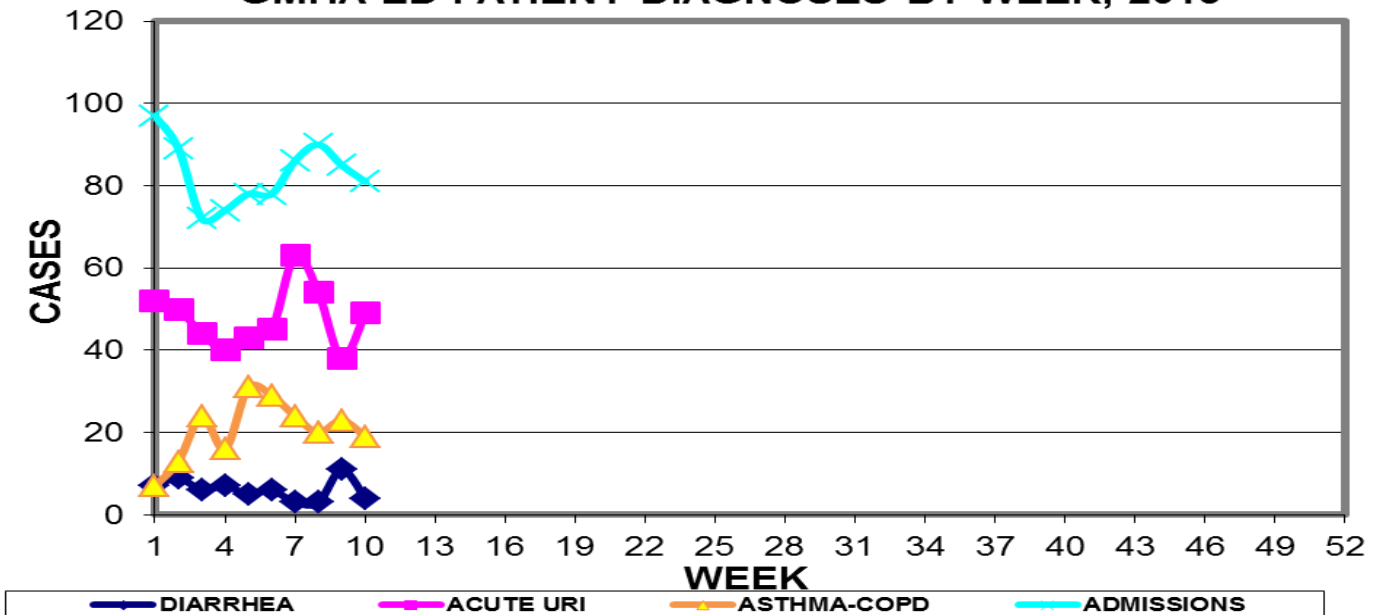
REPORT FOR WEEK ENDING: 3/14/2015 (Reporting week 2015-10)

**GUAM REPORTS**

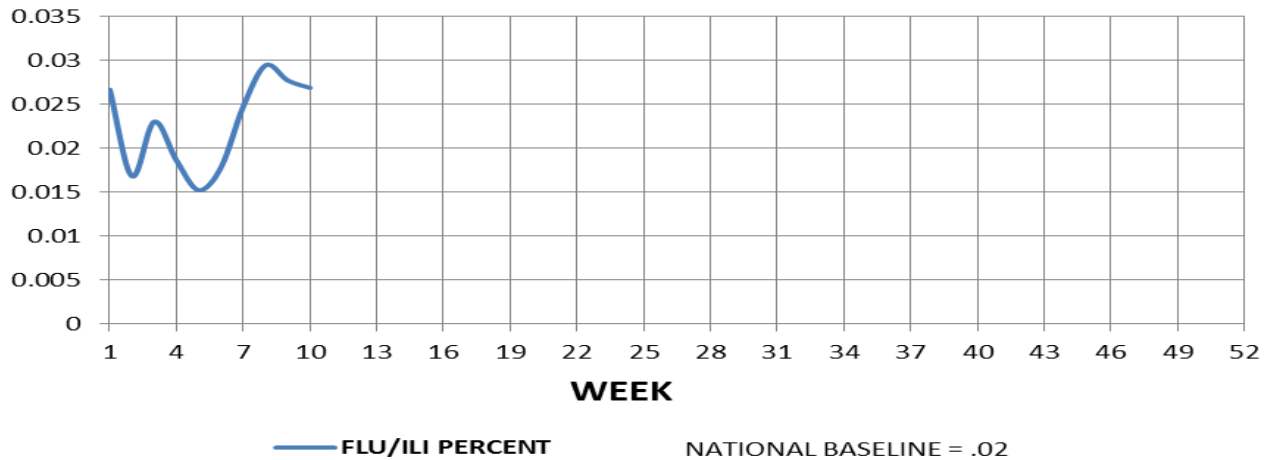
**GUAM ACUTE RESPIRATORY INFECTION SURVEILLANCE 2015;  
 GMHA-EMERGENCY DEPARTMENT PATIENTS BY WEEK SEEN**



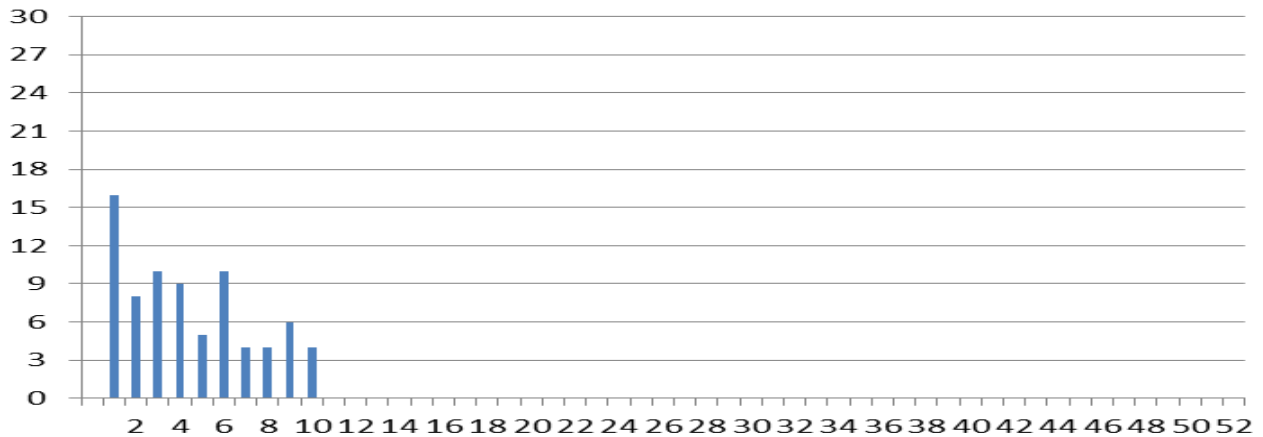
**GUAM SYNDROMIC DISEASE SURVEILLANCE  
 GMHA-ED PATIENT DIAGNOSES BY WEEK, 2015**



**FLU/ILI AS A PERCENT OF TOTAL PATIENTS SEEN, GMHA-ED, 2015  
(3-WEEK SMOOTHED)**



**NUMBER OF CASES OF INFLUENZA AND ILI REPORTED BY  
SENTINEL PHYSICIANS BY WEEK REPORTED, 2015**



**GUAM SENTINEL PHYSICIAN INFLUENZA SURVEILLANCE**  
 REPORTS OF INFLUENZA OR INFLUENZA-LIKE ILLNESSES  
 RECEIVED FOR THE WEEK ENDING 3/14/15  
 Four cases reported by sentinel physicians

Bureau of Communicable Disease Control  
**Guam Department of Public Health & Social Services**  
**H1N1 INFLUENZA SURVEILLANCE, WEEK 10**  
**NO CASES OF H1N1 REPORTED FOR WEEK 10**  
**Cumulative 2015: 0 civilian & 0 military cases**

INFECTION CONTROL DEPARTMENT  
 GUAM MEMORIAL HOSPITAL AUTHORITY  
**HOSPITALIZATIONS FOR INFLUENZA A BY AGE**  
**AND MORBIDITY REPORTING WEEK, 2015**

<b>AGE</b>	<b>1</b>	<b>2</b>	<b>3</b>	<b>4</b>	<b>5</b>	<b>6</b>	<b>7</b>	<b>8</b>	<b>9</b>	<b>10</b>	<b>TOTAL</b>
0-4											
5-18											
19-24											
25-49											
50-64											
65+											
<b>TOTAL</b>	<b>0</b>	<b>0</b>	<b>0</b>	<b>0</b>	<b>0</b>	<b>0</b>	<b>0</b>	<b>0</b>	<b>0</b>	<b>1</b>	

Bureau of Communicable Disease Control  
**Guam Department of Public Health & Social Services**  
**ISLAND-WIDE COMMUNICABLE DISEASE REPORT**

REPORTS RECEIVED DURING THE WEEK ENDING 3/14/2015

<i>Chlamydia trachomatis</i>	12
Conjunctivitis	1
Gonorrhea	2
<i>E. coli</i> MDR, ESBL+	3
Hepatitis B	1
Hepatitis C	1
Influenza	1
<i>Klebsiella pneumoniae</i> MDR	1
MRSA	4
Scabies	10
Streptococcal sore throat	3
Streptococcal disease, other	1
Tuberculosis, pulmonary	5
VRE	1

INFECTION CONTROL DEPARTMENT  
 GUAM MEMORIAL HOSPITAL AUTHORITY  
**GMHA-EMERGENCY DEPARTMENT CLINICAL DIAGNOSES OF INFLUENZA OR  
 FLU-SYNDROME BY WEEK AND PATIENT'S VILLAGE OF RESIDENCE, 2015**  
 (Villages listed geographically from northern-most to southern-most)

VILLAGE	WEEK										TOTAL	2015 RATE
	1	2	3	4	5	6	7	8	9	10		
Yigo	1	1	0	1	4	2	1	2	1	5	18	86.32
Dededo	3	1	4	1	1	4	6	3	3	4	30	65.75
Tamuning	2	1	1	0	0	0	1	3	1	2	11	55.04
Barrigada	0	1	1	0	0	1	1	0	2	0	6	66.59
Mangilao	0	1	0	2	0	1	1	0	0	2	7	45.39
Mongmong-T-M	2	0	3	0	0	1	1	1	1	0	9	129.89
Hagatña	0	0	0	0	0	0	1	0	0	0	1	93.72
Agaña Heights	0	0	0	0	0	0	0	0	0	0	0	0.00
Sinajana	0	0	0	0	0	0	1	0	0	1	2	76.02
Chalan Pago-Ordot	1	0	0	0	0	0	0	1	0	0	2	28.88
Asan-Maina	0	0	0	0	0	0	0	0	0	0	0	0.00
Piti	0	0	0	0	0	0	0	0	0	0	0	0.00
Santa Rita	1	2	0	0	0	0	0	1	0	0	4	64.76
Agat	1	1	0	1	0	1	1	0	0	0	5	100.16
Yona	1	1	0	0	0	0	0	1	0	0	3	45.60
Talofofo	0	0	0	0	0	0	0	0	1	0	1	32.30
Inarajan	1	0	0	0	0	0	1	1	0	0	3	129.98
Merizo	0	2	0	1	1	1	0	0	0	0	5	266.24
Umatac	0	0	0	0	0	0	0	0	0	0	0	0.00
Tourist	2	0	0	0	0	1	0	1	0	0	4	
Unknown	0	0	0	0	0	0	1	0	0	0	1	
<b>TOTAL</b>	15	11	9	6	6	12	16	14	9	14	112	69.23

NOTE: Rate = cases per 100,000 population for the year to date.

INFLUENZA/ILI ACTIVITY LEVEL - Regional (5 villages affected)  
 (ACTIVITY LEVELS: No activity, Sporadic, Local, Regional, Widespread)

**GUAM ANIMAL DISEASE (ZONOSSES) REPORTS**  
 REPORTS RECEIVED FOR THE WEEK ENDING 3/14/2015

Anaplasmosis – 1 canine, Ehrlichiosis – 2 canine

## Chikungunya virus infection outbreaks and circulation in the Pacific Island countries and territories, from February 2011 to 16 March 2015

Month of onset	Country/Territory	No of reported cases and deaths
February 2011	New Caledonia	First time chikungunya was ever reported in the region. 33 cases reported.
June 2012	Papua New Guinea	A major outbreak spread over PNG in 2013. Number of cases not reported.
January 2013	New Caledonia	31 cases reported.
August 2013	Yap, Federated States of Micronesia	1,711 suspected cases identified in Yap State. Circulation of CHIKV reconfirmed in 2014.
February 2014	Tonga	Over 10 000 suspected cases reported.
April 2014	New Caledonia	6 cases reported (3 autochthonous cases and 3 imported cases from Tonga).
June 2014	American Samoa	1,171 probable cases as of 04 December 2014, with 19 hospitalisations. No deaths reported.
July 2014	Tokelau	164 suspected cases reported as of 11 September 2014.
July 2014	Samoa	4,524 cases as of 9 March 2015. No deaths reported.
September 2014	French Polynesia	More than 69,000 people who sought initial care showing clinical signs (more than 25% of the population). 938 hospitalisations and 16 deaths.
October 2014	New Caledonia	58 confirmed cases (4 autochthonous cases and 54 imported cases from French Polynesia).
October 2014	Cook Islands	138 cases reported (of which 18 confirmed cases).
December 2014	Kiribati	12,068 suspected cases reported as of 5 March 2015.

Several sources of information were used to compile this table. They are available on request.

Many thanks again for the Pacific Island countries and territories and PPHSN partners for the continuous sharing of information and updates on Chikungunya and other epidemic and emerging diseases in the region.

Source: Secretariat of the Pacific Community <http://www.spc.int/>

See also: <http://www.eurosurveillance.org/ViewArticle.aspx?ArticleId=20929>