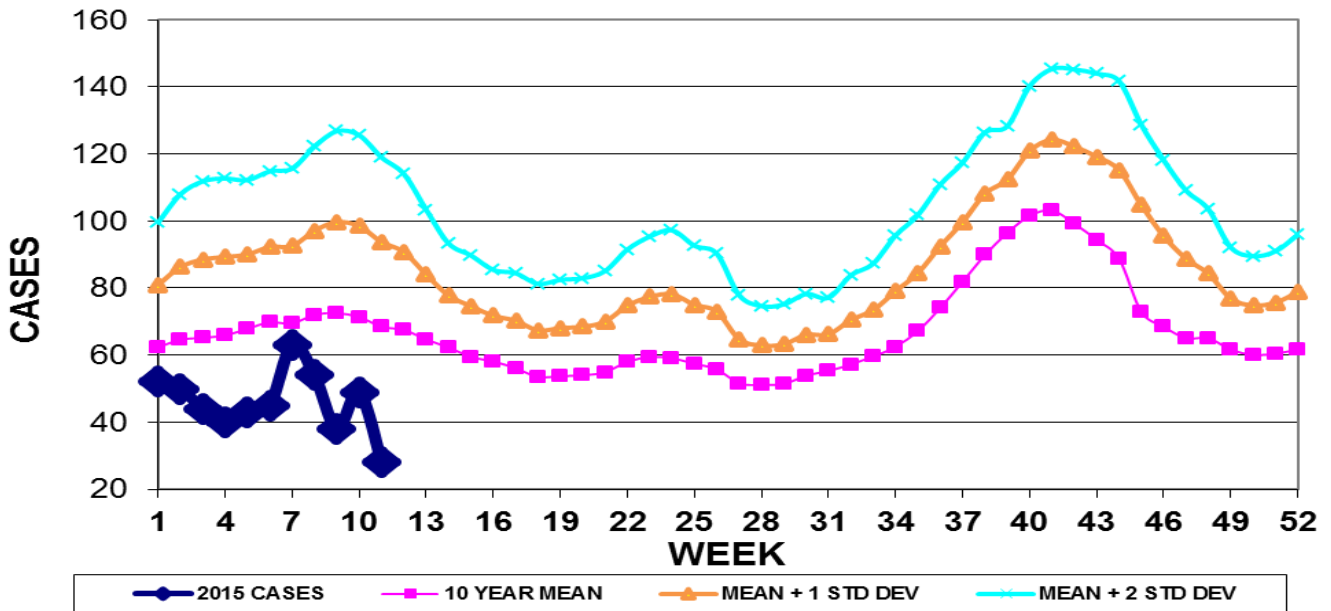


INFECTION CONTROL DEPARTMENT  
 GUAM MEMORIAL HOSPITAL AUTHORITY  
**GUAM EPIDEMIOLOGY NEWSLETTER**

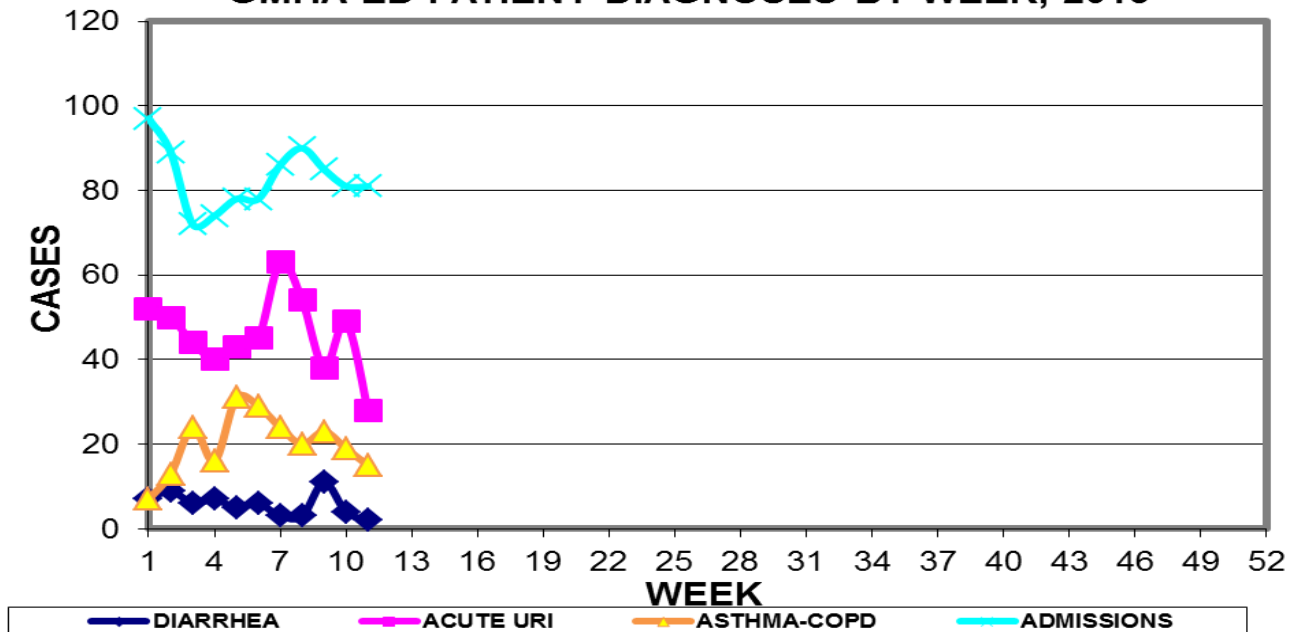
REPORT FOR WEEK ENDING: 3/21/2015 (Reporting week 2015-11)

**GUAM REPORTS**

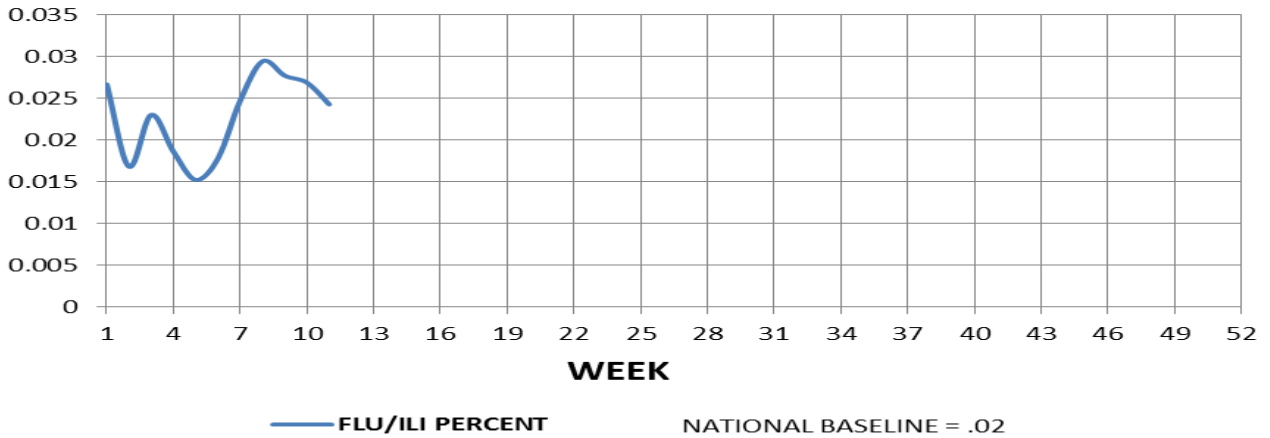
**GUAM ACUTE RESPIRATORY INFECTION SURVEILLANCE 2015;  
 GMHA-EMERGENCY DEPARTMENT PATIENTS BY WEEK SEEN**



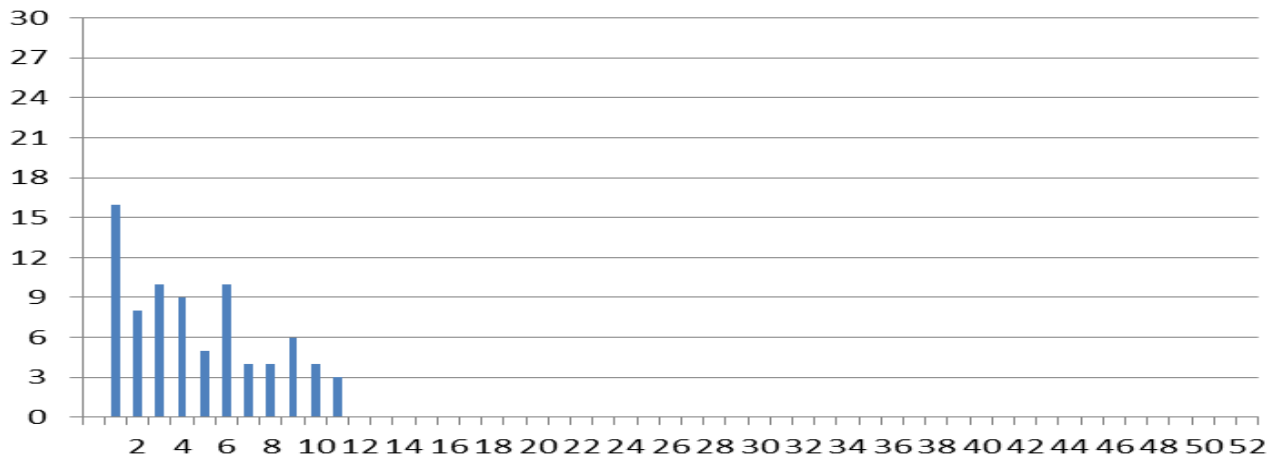
**GUAM SYNDROMIC DISEASE SURVEILLANCE  
 GMHA-ED PATIENT DIAGNOSES BY WEEK, 2015**



**FLU/ILI AS A PERCENT OF TOTAL PATIENTS SEEN, GMHA-ED, 2015  
(3-WEEK SMOOTHED)**



**NUMBER OF CASES OF INFLUENZA AND ILI REPORTED BY  
SENTINEL PHYSICIANS BY WEEK REPORTED, 2015**



**GUAM SENTINEL PHYSICIAN INFLUENZA SURVEILLANCE**

REPORTS OF INFLUENZA OR INFLUENZA-LIKE ILLNESSES  
RECEIVED FOR THE WEEK ENDING 3/21/15

Three cases reported by sentinel physicians

Bureau of Communicable Disease Control  
**Guam Department of Public Health & Social Services**  
**H1N1 INFLUENZA SURVEILLANCE, WEEK 11**  
**NO CASES OF H1N1 REPORTED FOR WEEK 11**  
**Cumulative 2015: 0 civilian & 0 military cases**

INFECTION CONTROL DEPARTMENT  
 GUAM MEMORIAL HOSPITAL AUTHORITY  
**HOSPITALIZATIONS FOR INFLUENZA A BY AGE**  
**AND MORBIDITY REPORTING WEEK, 2015**

AGE	1	2	3	4	5	6	7	8	9	10	11	TOTAL
0-4												
5-18												
19-24												
25-49												
50-64												
65+												
TOTAL	0	0	0	0	0	0	0	0	0	1	0	

Bureau of Communicable Disease Control  
**Guam Department of Public Health & Social Services**  
**ISLAND-WIDE COMMUNICABLE DISEASE REPORT**

REPORTS RECEIVED DURING THE WEEK ENDING 3/21/2015

Chickenpox	2
<i>Chlamydia trachomatis</i>	24
Conjunctivitis	7
Gonorrhea	1
<i>E. coli</i> MDR, ESBL+	3
Hepatitis A	2
Hepatitis B	8
Hepatitis C	5
Influenza	1
<i>Klebsiella pneumoniae</i> MDR	1
MRSA	10
Pertussis	2
Respiratory syncytial virus	1
Rubella	1
Scabies	10
Streptococcal sore throat	18
Streptococcal disease, other	19
Tuberculosis, pulmonary	2
VRE	1

□

INFECTION CONTROL DEPARTMENT  
 GUAM MEMORIAL HOSPITAL AUTHORITY  
**GMHA-EMERGENCY DEPARTMENT CLINICAL DIAGNOSES OF INFLUENZA OR  
 FLU-SYNDROME BY WEEK AND PATIENT'S VILLAGE OF RESIDENCE, 2015**  
 (Villages listed geographically from northern-most to southern-most)

VILLAGE	WEEK										TOTAL	2015 RATE
	2	3	4	5	6	7	8	9	10	11		
Yigo	1	0	1	4	2	1	2	1	5	1	19	91.12
Dededo	1	4	1	1	4	6	3	3	4	2	32	70.13
Tamuning	1	1	0	0	0	1	3	1	2	1	12	60.05
Barrigada	1	1	0	0	1	1	0	2	0	0	6	66.59
Mangilao	1	0	2	0	1	1	0	0	2	1	8	51.87
Mongmong-T-M	0	3	0	0	1	1	1	1	0	0	9	129.89
Hagatña	0	0	0	0	0	1	0	0	0	0	1	93.72
Agaña Heights	0	0	0	0	0	0	0	0	0	0	0	0.00
Sinajana	0	0	0	0	0	1	0	0	1	0	2	76.02
Chalan Pago-Ordot	0	0	0	0	0	0	1	0	0	1	3	43.32
Asan-Maina	0	0	0	0	0	0	0	0	0	0	0	0.00
Piti	0	0	0	0	0	0	0	0	0	0	0	0.00
Santa Rita	2	0	0	0	0	0	1	0	0	0	4	64.76
Agat	1	0	1	0	1	1	0	0	0	0	5	100.16
Yona	1	0	0	0	0	0	1	0	0	0	3	45.60
Talofof	0	0	0	0	0	0	0	1	0	0	1	32.30
Inarajan	0	0	0	0	0	1	1	0	0	1	4	173.31
Merizo	2	0	1	1	1	0	0	0	0	0	5	266.24
Umatac	0	0	0	0	0	0	0	0	0	0	0	0.00
Tourist	0	0	0	0	1	0	1	0	0	0	4	
Unknown	0	0	0	0	0	1	0	0	0	0	1	
<b>TOTAL</b>	<b>11</b>	<b>9</b>	<b>6</b>	<b>6</b>	<b>12</b>	<b>16</b>	<b>14</b>	<b>9</b>	<b>14</b>	<b>8</b>	<b>120</b>	<b>74.17</b>

NOTE: Rate = cases per 100,000 population for the year to date.

INFLUENZA/ILI ACTIVITY LEVEL - Regional (5 villages affected)  
 (ACTIVITY LEVELS: No activity, Sporadic, Local, Regional, Widespread)

**GUAM ANIMAL DISEASE (ZONOSSES) REPORTS**  
 REPORTS RECEIVED FOR THE WEEK ENDING 3/21/2015

Anaplasmosis – 1 canine, Babesiosis – 2 canine