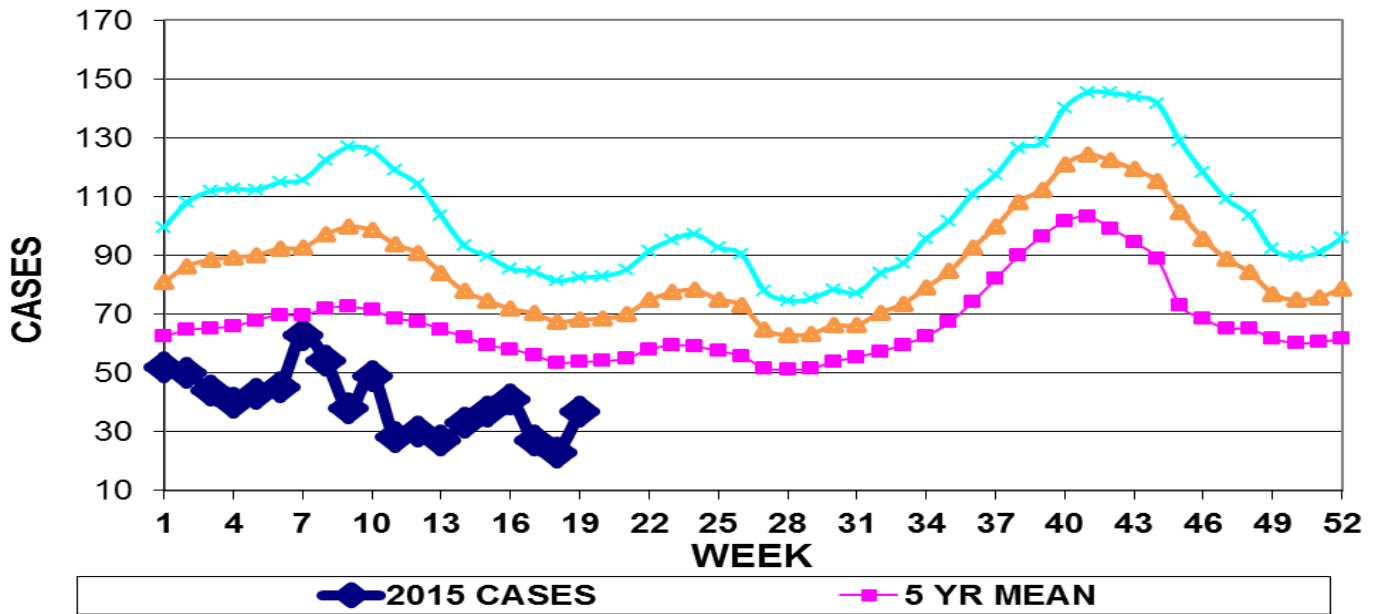


INFECTION CONTROL DEPARTMENT  
 GUAM MEMORIAL HOSPITAL AUTHORITY  
**GUAM EPIDEMIOLOGY NEWSLETTER**

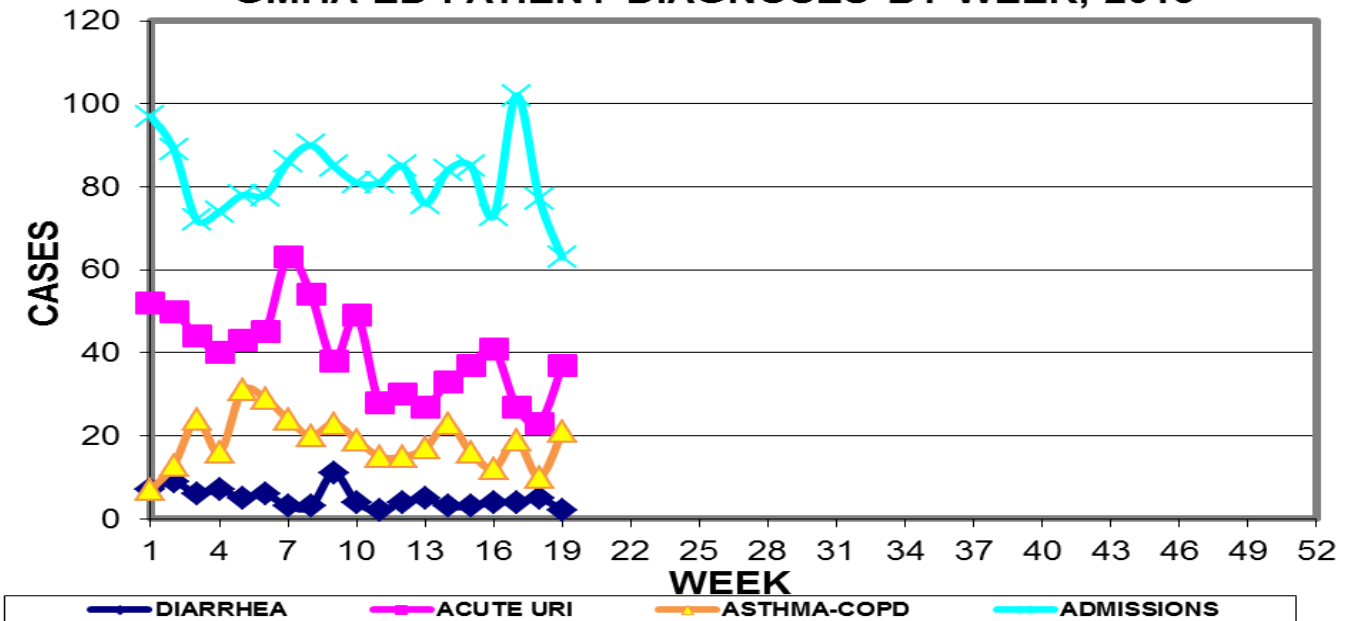
REPORT FOR WEEK ENDING: 5/16/2015 (Reporting week 2015-19)

**GUAM REPORTS**

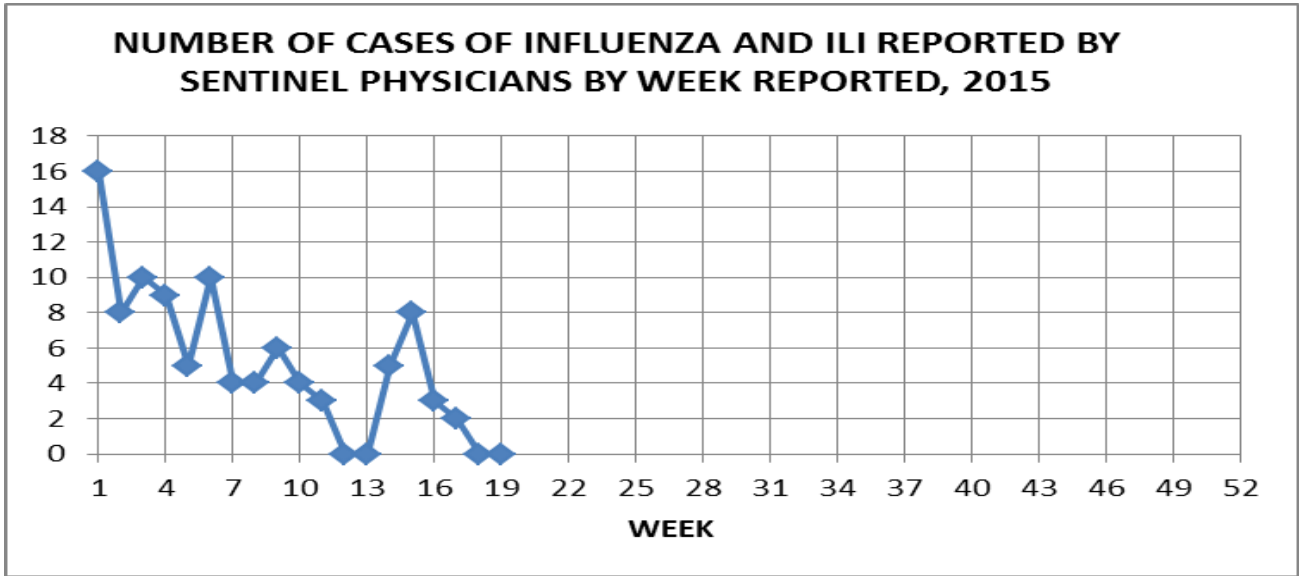
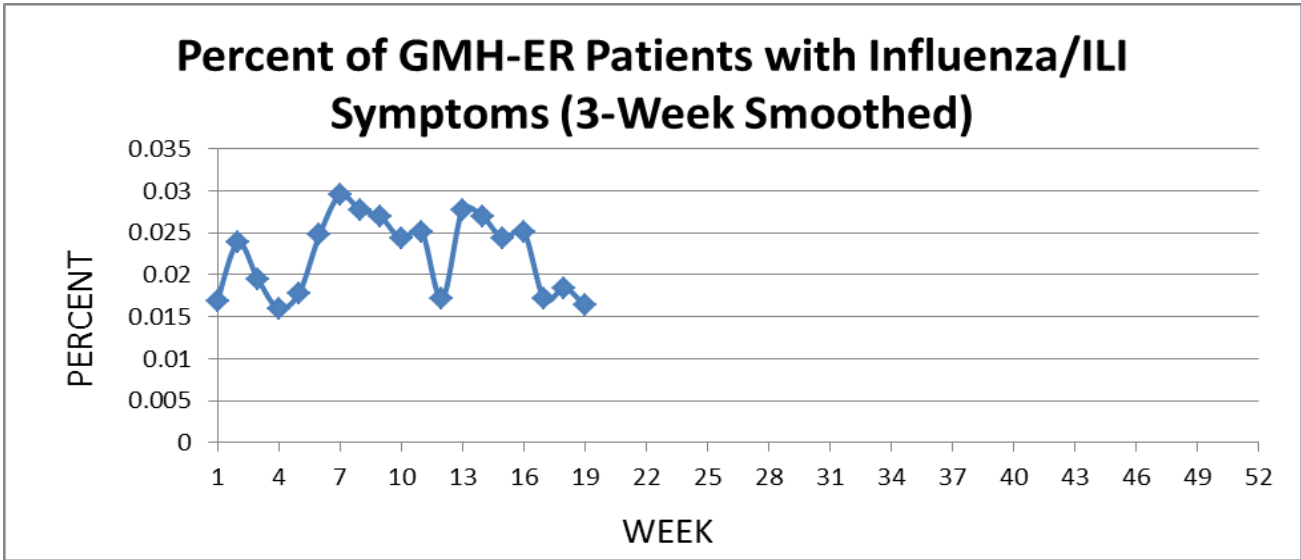
**GUAM ACUTE RESPIRATORY INFECTION SURVEILLANCE 2015;  
 GMHA-EMERGENCY DEPARTMENT PATIENTS BY WEEK SEEN**



**GUAM SYNDROMIC DISEASE SURVEILLANCE  
 GMHA-ED PATIENT DIAGNOSES BY WEEK, 2015**



NOTE: Hospital admissions restricted during week 19 due to passage of a typhoon and facility being used as a shelter for women with advanced pregnancies..



**GUAM SENTINEL PHYSICIAN INFLUENZA SURVEILLANCE**  
 REPORTS OF INFLUENZA OR INFLUENZA-LIKE ILLNESSES  
 RECEIVED FOR THE WEEK ENDING 5/16/15  
 No cases reported by sentinel physicians

Bureau of Communicable Disease Control  
**Guam Department of Public Health & Social Services**  
**H1N1 INFLUENZA SURVEILLANCE, WEEK 19**  
**NO CASES OF H1N1 REPORTED FOR WEEK 19**  
**Cumulative 2015: 0 civilian & 0 military cases**

INFECTION CONTROL DEPARTMENT  
 GUAM MEMORIAL HOSPITAL AUTHORITY  
**HOSPITALIZATIONS FOR INFLUENZA A BY AGE**  
**AND MORBIDITY REPORTING WEEK, 2015**

AGE	8	9	10	11	12	13	14	15	16	17	18	19	TOTAL
0-4			1										1
5-18													
19-24													
25-49													
50-64													
65+													
TOTAL	0	0	1	0	0	0	0	0	0	0	0	0	1

Bureau of Communicable Disease Control  
**Guam Department of Public Health & Social Services**  
**ISLAND-WIDE COMMUNICABLE DISEASE REPORT**

REPORTS RECEIVED DURING THE WEEK ENDING 5/16/2016

<i>Chlamydia trachomatis</i>	34
<i>Clostridium difficile</i>	1
Conjunctivitis	24
<i>E. coli</i> MDR	12
Gonorrhea	9
Hepatitis A*	
Hepatitis B*	2
Hepatitis C*	3
HPV	9
HSV 2	2
<i>Klebsiella pneumoniae</i> MDR	4
MRSA	14
Pertussis	1
Scabies	3
Scarlet fever	1
Streptococcal sore throat	23
Streptococcal disease, other	1
Tuberculosis	1

\*May represent chronic disease but not previously included in the Hepatitis Registry

□

INFECTION CONTROL DEPARTMENT  
 GUAM MEMORIAL HOSPITAL AUTHORITY  
**GMHA-EMERGENCY DEPARTMENT CLINICAL DIAGNOSES OF INFLUENZA OR  
 FLU-SYNDROME BY WEEK AND PATIENT'S VILLAGE OF RESIDENCE, 2015**  
 (Villages listed geographically from northern-most to southern-most)

VILLAGE	WEEK										TOTAL	2015 RATE
	10	11	12	13	14	15	16	17	18	19		
Yigo	5	1	1	0	1	1	0	1	1	1	25	119.89
Dededo	4	2	3	1	4	2	5	3	1	4	55	120.54
Tamuning	2	1	0	0	1	0	2	2	1	1	19	95.07
Barrigada	0	0	0	0	1	1	0	0	1	0	9	99.89
Mangilao	2	1	1	0	1	1	1	0	1	2	15	97.26
Mongmong-T-M	0	0	3	0	2	0	1	0	0	1	15	216.48
Hagatña	0	0	0	0	0	0	1	0	0	0	2	187.44
Agaña Heights	0	0	0	0	0	0	0	0	0	0	0	0.00
Sinajana	1	0	0	0	0	1	1	0	0	0	4	152.03
Chalan Pago-Ordot	0	1	0	0	0	0	0	1	0	0	4	57.75
Asan-Maina	0	0	0	0	0	0	0	0	0	0	0	0.00
Piti	0	0	0	0	0	0	0	0	0	0	0	0.00
Santa Rita	0	0	0	0	0	0	0	0	0	0	4	64.76
Agat	0	0	0	0	0	1	1	1	1	0	10	200.32
Yona	0	0	0	0	0	0	0	0	0	0	3	45.60
Talofof	0	0	0	0	0	1	0	0	0	0	2	64.60
Inarajan	0	1	0	0	0	0	0	1	0	0	5	216.64
Merizo	0	0	0	0	0	0	0	0	0	0	5	266.24
Umatac	0	0	0	0	0	0	0	0	0	0	0	0.00
Tourist	0	0	1	2	0	0	0	0	0	1	5	
Unknown	0	0	0	0	0	0	0	0	0	0	1	
<b>TOTAL</b>	<b>14</b>	<b>8</b>	<b>9</b>	<b>3</b>	<b>10</b>	<b>8</b>	<b>12</b>	<b>9</b>	<b>6</b>	<b>10</b>	<b>187</b>	<b>115.59</b>

NOTE: Rate = cases per 100,000 population for the year to date.

INFLUENZA/ILI ACTIVITY LEVEL - Regional (5 villages affected)  
 (ACTIVITY LEVELS: No activity, Sporadic, Local, Regional, Widespread)

**GUAM ANIMAL DISEASE (ZONOSSES) REPORTS**  
 REPORTS RECEIVED FOR THE WEEK ENDING 5/16/2015

None received