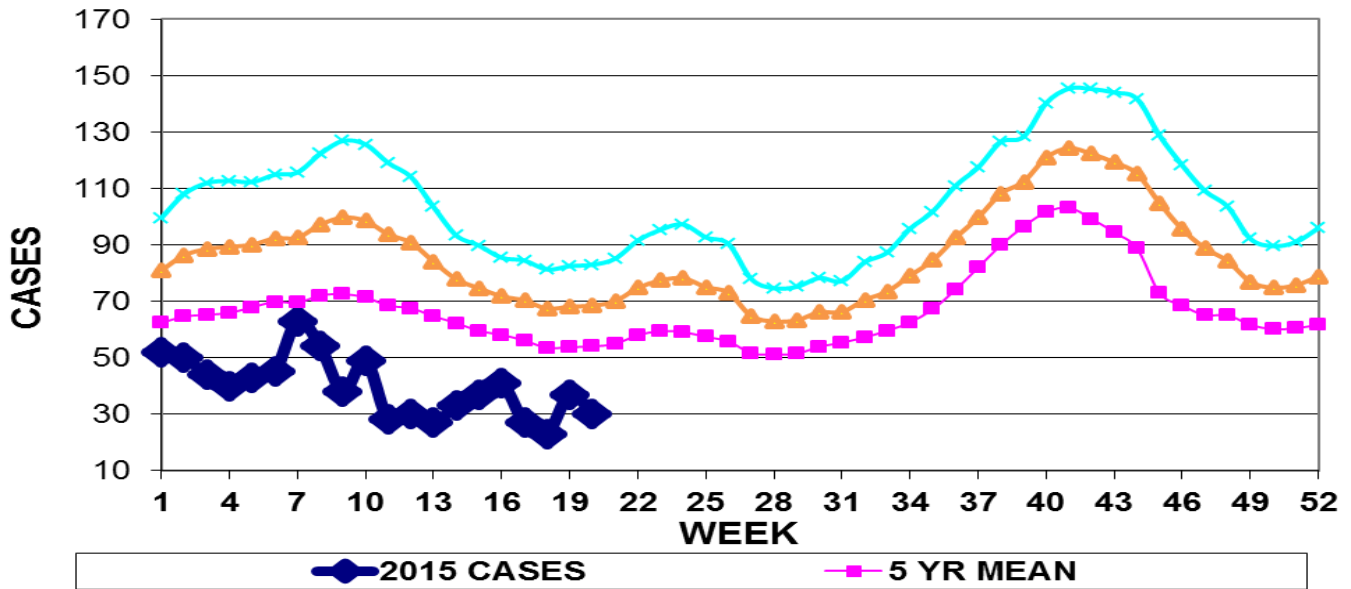


INFECTION CONTROL DEPARTMENT
 GUAM MEMORIAL HOSPITAL AUTHORITY
GUAM EPIDEMIOLOGY NEWSLETTER

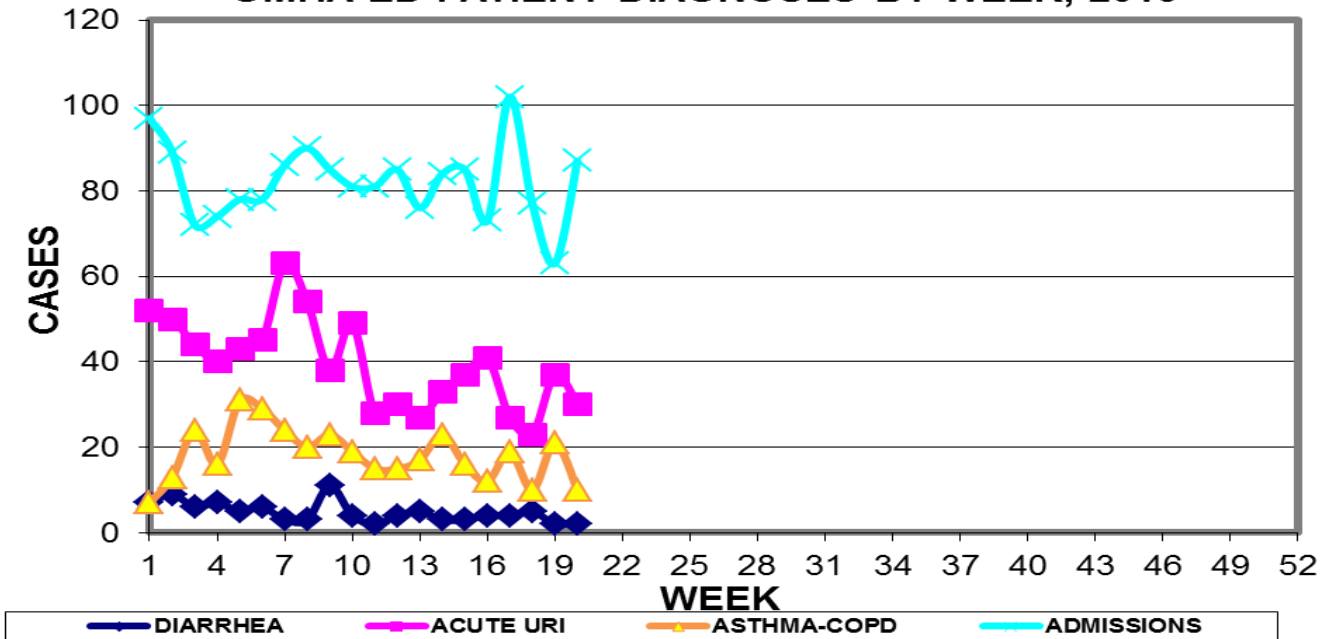
REPORT FOR WEEK ENDING: 5/23/2015 (Reporting week 2015-20)

GUAM REPORTS

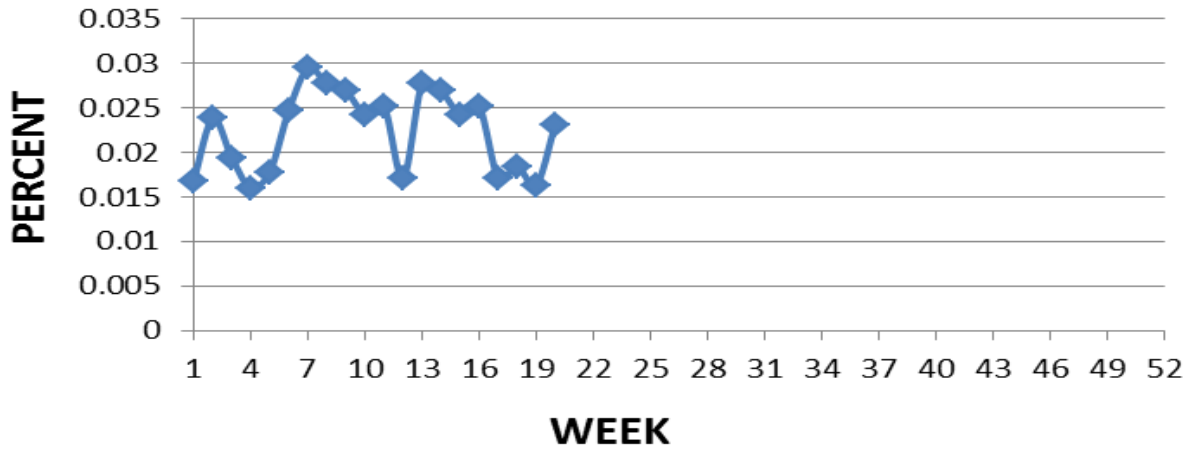
**GUAM ACUTE RESPIRATORY INFECTION SURVEILLANCE 2015;
 GMHA-EMERGENCY DEPARTMENT PATIENTS BY WEEK SEEN**



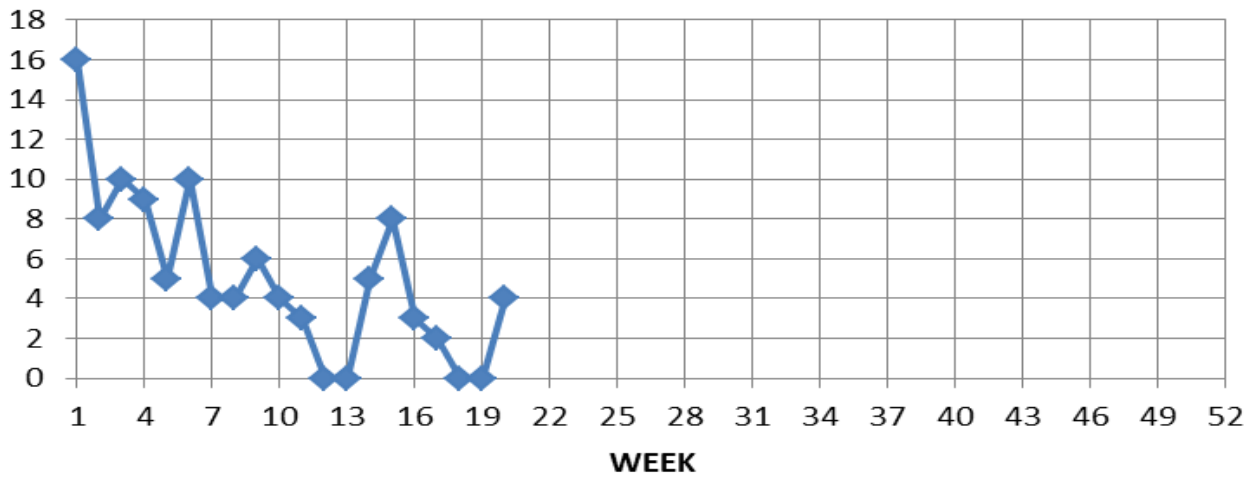
**GUAM SYNDROMIC DISEASE SURVEILLANCE
 GMHA-ED PATIENT DIAGNOSES BY WEEK, 2015**



Percent of total GMH-ER patients with Influenza/ILI symptoms (3-week smoothed)



NUMBER OF CASES OF INFLUENZA AND ILI REPORTED BY SENTINEL PHYSICIANS BY WEEK REPORTED, 2015



GUAM SENTINEL PHYSICIAN INFLUENZA SURVEILLANCE

REPORTS OF INFLUENZA OR INFLUENZA-LIKE ILLNESSES
RECEIVED FOR THE WEEK ENDING 5/23/15

Four cases reported by sentinel physicians

Bureau of Communicable Disease Control
Guam Department of Public Health & Social Services
H1N1 INFLUENZA SURVEILLANCE, WEEK 20
NO CASES OF H1N1 REPORTED FOR WEEK 20
Cumulative 2015: 0 civilian & 0 military cases

INFECTION CONTROL DEPARTMENT
 GUAM MEMORIAL HOSPITAL AUTHORITY
HOSPITALIZATIONS FOR INFLUENZA A BY AGE
AND MORBIDITY REPORTING WEEK, 2015

AGE	9	10	11	12	13	14	15	16	17	18	19	20	TOTAL
0-4		1											1
5-18													
19-24													
25-49													
50-64													
65+													
TOTAL	0	1	0	0	0	0	0	0	0	0	0	0	1

Bureau of Communicable Disease Control
Guam Department of Public Health & Social Services
ISLAND-WIDE COMMUNICABLE DISEASE REPORT

REPORTS RECEIVED DURING THE WEEK ENDING 5/16/2016

<i>Chlamydia trachomatis</i>	41
Conjunctivitis	8
<i>E. coli</i> MDR	6
Gonorrhea	10
Hepatitis A*	4
Hepatitis B*	4
Hepatitis C*	2
HPV	1
HSV 2	1
<i>Klebsiella pneumoniae</i> MDR	1
MRSA	8
Scabies	3
Streptococcal sore throat	3
Streptococcal disease, other	1
VRE	3

*May represent chronic disease but not previously included in the Hepatitis Registry

□

INFECTION CONTROL DEPARTMENT
 GUAM MEMORIAL HOSPITAL AUTHORITY
**GMHA-EMERGENCY DEPARTMENT CLINICAL DIAGNOSES OF INFLUENZA OR
 FLU-SYNDROME BY WEEK AND PATIENT'S VILLAGE OF RESIDENCE, 2015**
 (Villages listed geographically from northern-most to southern-most)

VILLAGE	WEEK										TOTAL	2015 RATE
	11	12	13	14	15	16	17	18	19	20		
Yigo	1	1	0	1	1	0	1	1	1	1	26	124.69
Dededo	2	3	1	4	2	5	3	1	4	2	57	124.93
Tamuning	1	0	0	1	0	2	2	1	1	0	19	95.07
Barrigada	0	0	0	1	1	0	0	1	0	1	10	110.99
Mangilao	1	1	0	1	1	1	0	1	2	4	15	97.26
Mongmong-T-M	0	3	0	2	0	1	0	0	1	0	15	216.48
Hagatña	0	0	0	0	0	1	0	0	0	0	2	187.44
Agaña Heights	0	0	0	0	0	0	0	0	0	0	0	0.00
Sinajana	0	0	0	0	1	1	0	0	0	0	4	152.03
Chalan Pago-Ordot	1	0	0	0	0	0	1	0	0	0	4	57.75
Asan-Maina	0	0	0	0	0	0	0	0	0	0	0	0.00
Piti	0	0	0	0	0	0	0	0	0	0	0	0.00
Santa Rita	0	0	0	0	0	0	0	0	0	1	5	80.95
Agat	0	0	0	0	1	1	1	1	0	0	10	200.32
Yona	0	0	0	0	0	0	0	0	0	0	3	45.60
Talofofo	0	0	0	0	1	0	0	0	0	0	2	64.60
Inarajan	1	0	0	0	0	0	1	0	0	0	5	216.64
Merizo	0	0	0	0	0	0	0	0	0	0	5	266.24
Umatac	0	0	0	0	0	0	0	0	0	0	0	0.00
Tourist	0	1	2	0	0	0	0	0	1	0	5	
Unknown	0	0	0	0	0	0	0	0	0	0	1	
TOTAL	8	9	3	10	8	12	9	6	10	9	196	121.15

NOTE: Rate = cases per 100,000 population for the year to date.

INFLUENZA/ILI ACTIVITY LEVEL - Regional (5 villages affected)
 (ACTIVITY LEVELS: No activity, Sporadic, Local, Regional, Widespread)

GUAM ANIMAL DISEASE (ZONOSSES) REPORTS
 REPORTS RECEIVED FOR THE WEEK ENDING 5/23/2015

Anaplasmosis – 2 canine