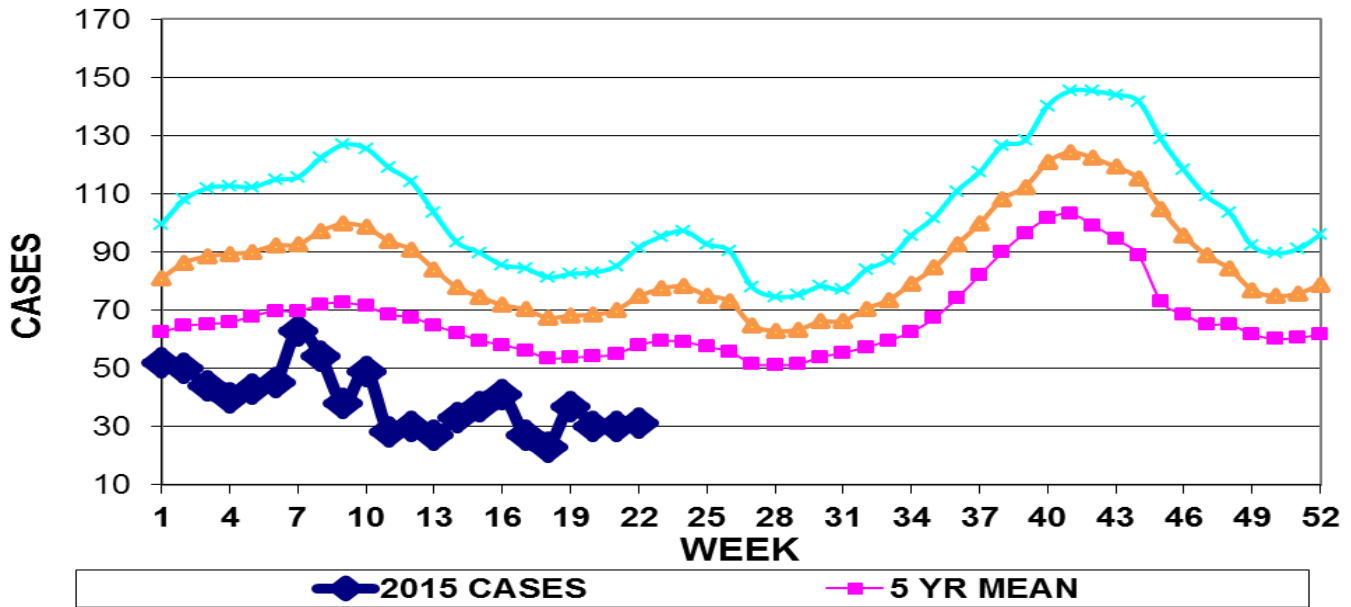


INFECTION CONTROL DEPARTMENT  
 GUAM MEMORIAL HOSPITAL AUTHORITY  
**GUAM EPIDEMIOLOGY NEWSLETTER**

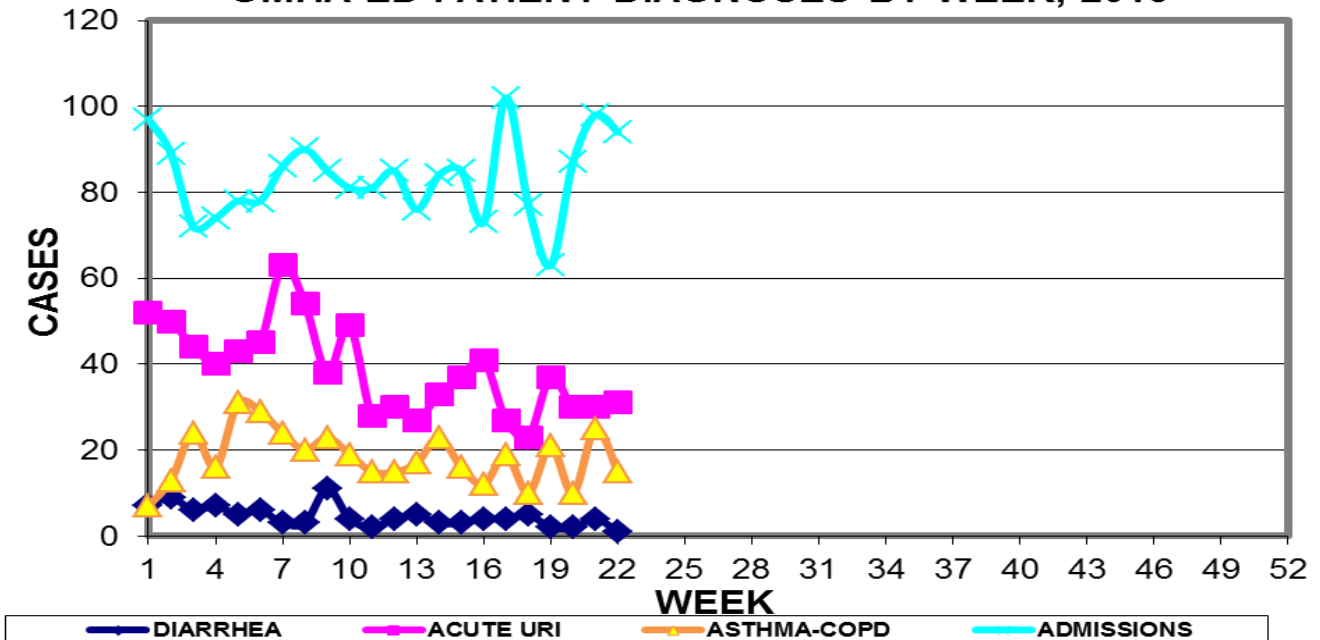
REPORT FOR WEEK ENDING: 6/6/2015 (Reporting week 2015-22)

**GUAM REPORTS**

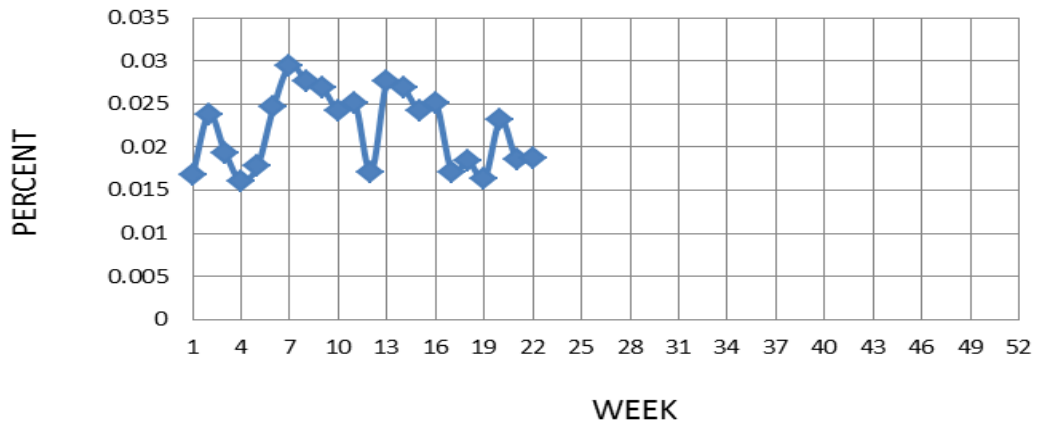
**GUAM ACUTE RESPIRATORY INFECTION SURVEILLANCE 2015;  
 GMHA-EMERGENCY DEPARTMENT PATIENTS BY WEEK SEEN**



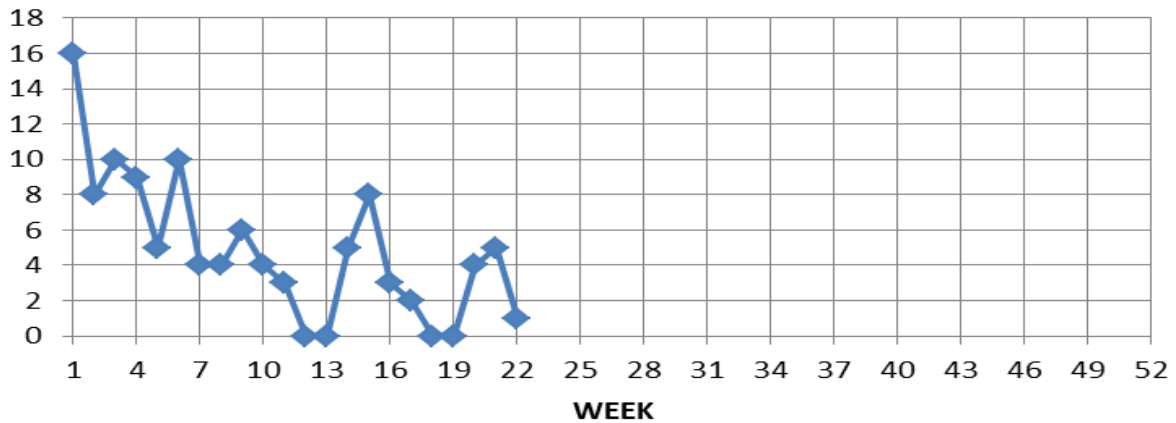
**GUAM SYNDROMIC DISEASE SURVEILLANCE  
 GMHA-ED PATIENT DIAGNOSES BY WEEK, 2015**



**Percent of total GMH-ER patients with Influenza/ILI symptoms (3-week smoothed)**



**NUMBER OF CASES OF INFLUENZA AND ILI REPORTED BY SENTINEL PHYSICIANS BY WEEK REPORTED, 2015**



**GUAM SENTINEL PHYSICIAN INFLUENZA SURVEILLANCE**

REPORTS OF INFLUENZA OR INFLUENZA-LIKE ILLNESSES  
RECEIVED FOR THE WEEK ENDING 6/6/15

One case reported by sentinel physicians

Bureau of Communicable Disease Control

Guam Department of Public Health & Social Services

**H1N1 INFLUENZA SURVEILLANCE, WEEK 22**

NO CASES OF H1N1 REPORTED FOR WEEK 22

**Cumulative 2015: 0 civilian & 0 military cases**

INFECTION CONTROL DEPARTMENT  
 GUAM MEMORIAL HOSPITAL AUTHORITY  
**HOSPITALIZATIONS FOR INFLUENZA A BY AGE  
 AND MORBIDITY REPORTING WEEK, 2015**

AGE	11	12	13	14	15	16	17	18	19	20	21	22	TOTAL
0-4													
5-18												1	1
19-24													
25-49													
50-64													
65+													1
TOTAL	0	0	0	0	0	0	0	0	0	0	0	1	2

Bureau of Communicable Disease Control  
**Guam Department of Public Health & Social Services**  
**ISLAND-WIDE COMMUNICABLE DISEASE REPORT**

REPORTS RECEIVED DURING THE WEEK ENDING 6/6/2015

Chickenpox	1
<i>Chlamydia trachomatis</i>	10
Conjunctivitis	6
Gonorrhea	1
Hepatitis A*	1
Hepatitis B*	2
HPV	1
HSV 2	1
Influenza	1
MRSA	11
Mumps	1
Pertussis	1
Scabies	11
Streptococcal sore throat	9
Streptococcal disease, other	1
Syphilis	1
Tuberculosis	4
VRE	1

\*May represent chronic disease but not previously included in the Hepatitis Registry

□

INFECTION CONTROL DEPARTMENT  
 GUAM MEMORIAL HOSPITAL AUTHORITY  
**GMHA-EMERGENCY DEPARTMENT CLINICAL DIAGNOSES OF INFLUENZA OR  
 FLU-SYNDROME BY WEEK AND PATIENT'S VILLAGE OF RESIDENCE, 2015**  
 (Villages listed geographically from northern-most to southern-most)

VILLAGE	WEEK										TOTAL	2015 RATE
	13	14	15	16	17	18	19	20	21	22		
Yigo	0	1	1	0	1	1	1	1	1	1	28	134.28
Dededo	1	4	2	5	3	1	4	2	4	1	62	135.85
Tamuning	0	1	0	2	2	1	1	0	0	1	20	100.08
Barrigada	0	1	1	0	0	1	0	1	0	0	10	110.99
Mangilao	0	1	1	1	0	1	2	4	0	1	20	129.68
Mongmong-T-M	0	2	0	1	0	0	1	0	2	0	18	259.78
Hagatña	0	0	0	1	0	0	0	0	0	1	3	281.16
Agaña Heights	0	0	0	0	0	0	0	0	0	0	0	0.00
Sinajana	0	0	1	1	0	0	0	0	0	0	4	152.03
Chalan Pago-Ordot	0	0	0	0	1	0	0	0	0	0	4	57.75
Asan-Maina	0	0	0	0	0	0	0	0	0	0	0	0.00
Piti	0	0	0	0	0	0	0	0	0	0	0	0.00
Santa Rita	0	0	0	0	0	0	0	1	0	0	5	80.95
Agat	0	0	1	1	1	1	0	0	1	0	11	220.35
Yona	0	0	0	0	0	0	0	0	0	1	4	60.80
Talofof	0	0	1	0	0	0	0	0	0	1	3	96.90
Inarajan	0	0	0	0	1	0	0	0	0	1	6	259.97
Merizo	0	0	0	0	0	0	0	0	0	0	5	266.24
Umatac	0	0	0	0	0	0	0	0	0	0	0	0.00
Tourist	2	0	0	0	0	0	1	0	0	0	5	
Unknown	0	0	0	0	0	0	0	0	0	1	2	
<b>TOTAL</b>	<b>3</b>	<b>10</b>	<b>8</b>	<b>12</b>	<b>9</b>	<b>6</b>	<b>10</b>	<b>9</b>	<b>8</b>	<b>9</b>	<b>213</b>	<b>131.66</b>

NOTE: Rate = cases per 100,000 population for the year to date.

INFLUENZA/ILI ACTIVITY LEVEL - Regional (9 villages affected)  
 (ACTIVITY LEVELS: No activity, Sporadic, Local, Regional, Widespread)

**GUAM ANIMAL DISEASE (ZONOSSES) REPORTS**  
 REPORTS RECEIVED FOR THE WEEK ENDING 6/6/2015

Ehrlichia canis – 1 canine