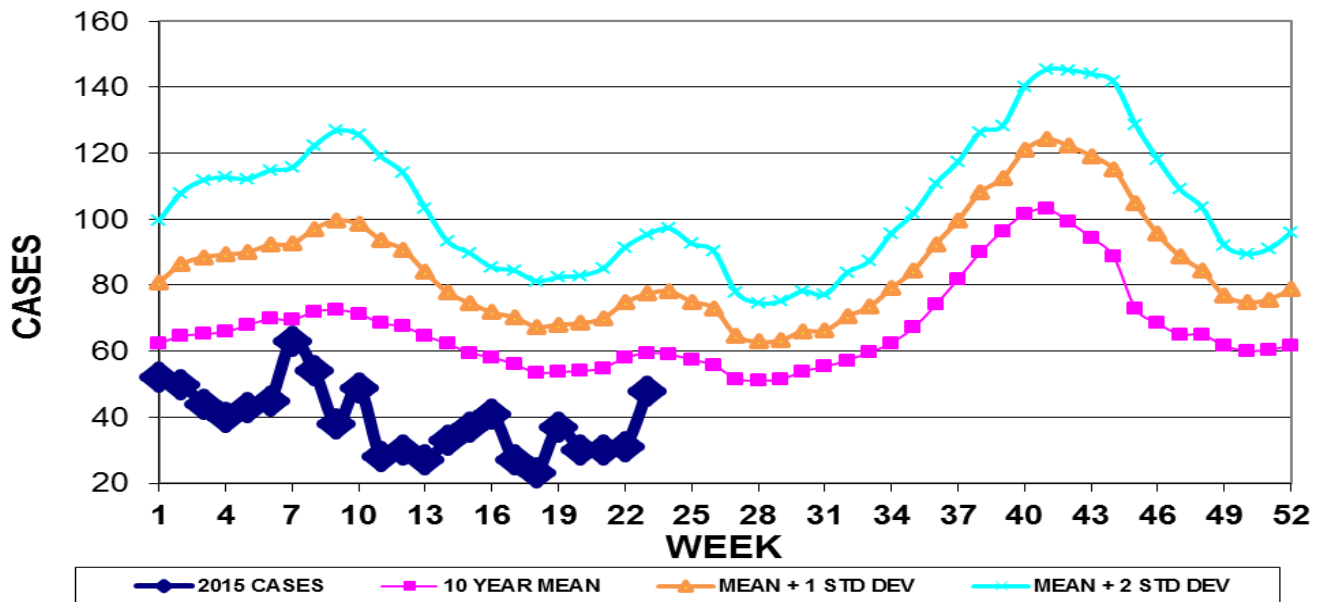


INFECTION CONTROL DEPARTMENT
 GUAM MEMORIAL HOSPITAL AUTHORITY
GUAM EPIDEMIOLOGY NEWSLETTER

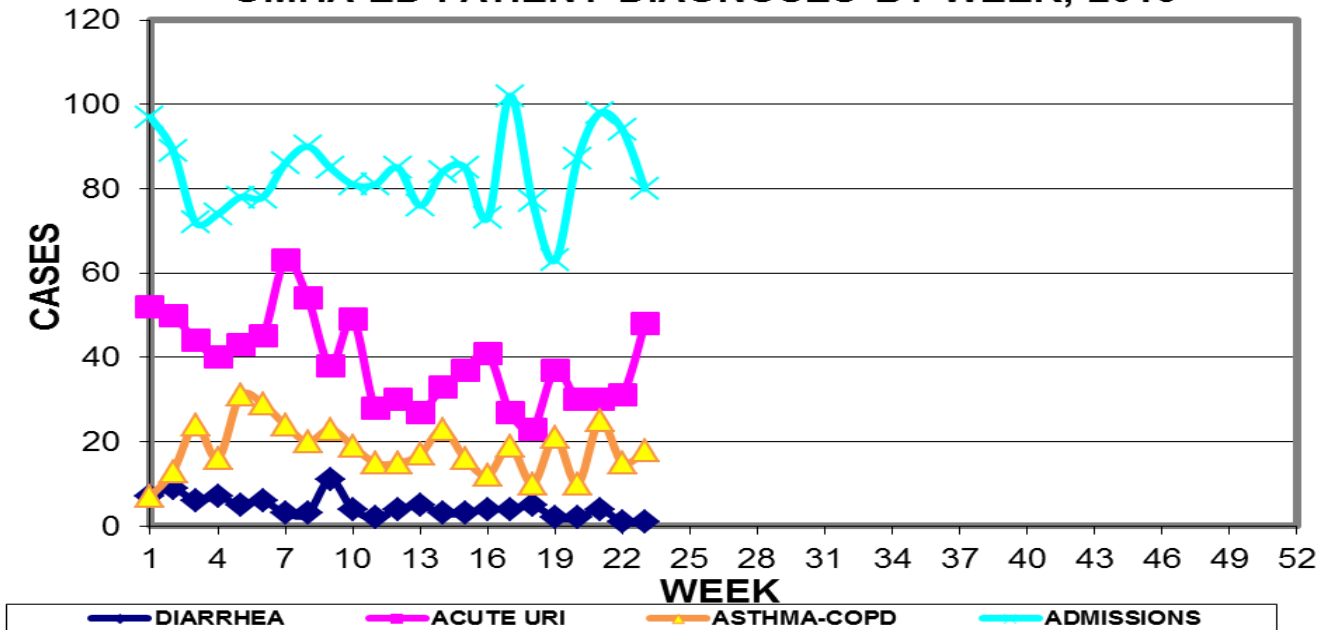
REPORT FOR WEEK ENDING: 6/13/2015 (Reporting week 2015-23)

GUAM REPORTS

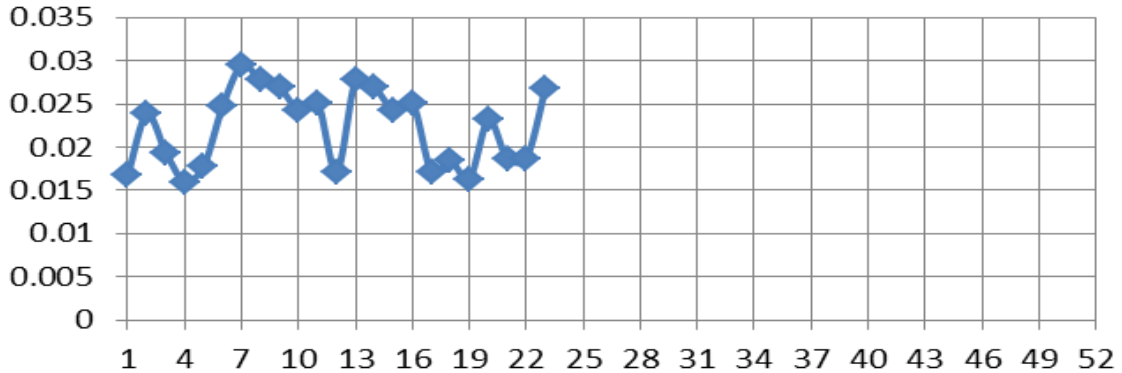
**GUAM ACUTE RESPIRATORY INFECTION SURVEILLANCE 2015;
 GMHA-EMERGENCY DEPARTMENT PATIENTS BY WEEK SEEN**



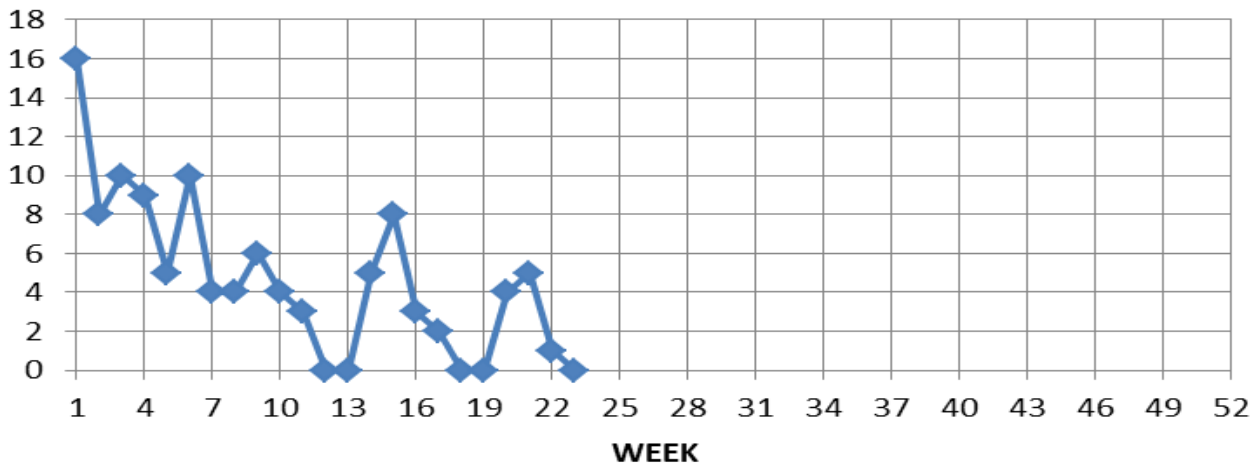
**GUAM SYNDROMIC DISEASE SURVEILLANCE
 GMHA-ED PATIENT DIAGNOSES BY WEEK, 2015**



**Percent of total GMH-ER patients with
Influenza/ILI symptoms (3-week smoothed)**



**NUMBER OF CASES OF INFLUENZA AND ILI REPORTED BY
SENTINEL PHYSICIANS BY WEEK REPORTED, 2015**



GUAM SENTINEL PHYSICIAN INFLUENZA SURVEILLANCE

REPORTS OF INFLUENZA OR INFLUENZA-LIKE ILLNESSES
RECEIVED FOR THE WEEK ENDING 6/6/15

One case reported by sentinel physicians

Bureau of Communicable Disease Control

Guam Department of Public Health & Social Services

H1N1 INFLUENZA SURVEILLANCE, WEEK 23

NO CASES OF H1N1 REPORTED FOR WEEK 23

Cumulative 2015: 0 civilian & 0 military cases

INFECTION CONTROL DEPARTMENT
 GUAM MEMORIAL HOSPITAL AUTHORITY
**HOSPITALIZATIONS FOR INFLUENZA A BY AGE
 AND MORBIDITY REPORTING WEEK, 2015**

AGE	12	13	14	15	16	17	18	19	20	21	22	23	TOTAL
0-4													
5-18											1		1
19-24													
25-49													
50-64													
65+													1
TOTAL	0	0	0	0	0	0	0	0	0	0	1	0	2

Bureau of Communicable Disease Control
Guam Department of Public Health & Social Services
ISLAND-WIDE COMMUNICABLE DISEASE REPORT

REPORTS RECEIVED DURING THE WEEK ENDING 6/13/2015

<i>Campylobacter jejuni</i>	1
Chickenpox	3
<i>Chlamydia trachomatis</i>	25
Conjunctivitis	10
Gonorrhea	9
Scabies	7
Streptococcal sore throat	4
Streptococcal disease, other	1

□

INFECTION CONTROL DEPARTMENT
 GUAM MEMORIAL HOSPITAL AUTHORITY
**GMHA-EMERGENCY DEPARTMENT CLINICAL DIAGNOSES OF INFLUENZA OR
 FLU-SYNDROME BY WEEK AND PATIENT'S VILLAGE OF RESIDENCE, 2015**
 (Villages listed geographically from northern-most to southern-most)

VILLAGE	WEEK										TOTAL	2015 RATE
	14	15	16	17	18	19	20	21	22	23		
Yigo	1	1	0	1	1	1	1	1	1	0	28	134.28
Dededo	4	2	5	3	1	4	2	4	1	5	67	146.84
Tamuning	1	0	2	2	1	1	0	0	1	1	21	105.08
Barrigada	1	1	0	0	1	0	1	0	0	1	11	122.09
Mangilao	1	1	1	0	1	2	4	0	1	1	21	136.17
Mongmong-T-M	2	0	1	0	0	1	0	2	0	1	19	274.21
Hagatña	0	0	1	0	0	0	0	0	1	1	4	374.88
Agaña Heights	0	0	0	0	0	0	0	0	0	0	0	0.00
Sinajana	0	1	1	0	0	0	0	0	0	0	4	152.03
Chalan Pago-Ordot	0	0	0	1	0	0	0	0	0	0	4	57.75
Asan-Maina	0	0	0	0	0	0	0	0	0	0	0	0.00
Piti	0	0	0	0	0	0	0	0	0	0	0	0.00
Santa Rita	0	0	0	0	0	0	1	0	0	1	6	97.13
Agat	0	1	1	1	1	0	0	1	0	0	11	220.35
Yona	0	0	0	0	0	0	0	0	1	0	4	60.80
Talofof	0	1	0	0	0	0	0	0	1	0	3	96.90
Inarajan	0	0	0	1	0	0	0	0	1	0	6	259.97
Merizo	0	0	0	0	0	0	0	0	0	0	5	266.24
Umatac	0	0	0	0	0	0	0	0	0	0	0	0.00
Tourist	0	0	0	0	0	1	0	0	0	0	5	
Unknown	0	0	0	0	0	0	0	0	1	0	2	
TOTAL	10	8	12	9	6	10	9	8	9	11	224	138.46

NOTE: Rate = cases per 100,000 population for the year to date.

INFLUENZA/ILI ACTIVITY LEVEL - Regional (9 villages affected)
 (ACTIVITY LEVELS: No activity, Sporadic, Local, Regional, Widespread)

GUAM ANIMAL DISEASE (ZOOSES) REPORTS
 REPORTS RECEIVED FOR THE WEEK ENDING 6/13/2015

None received