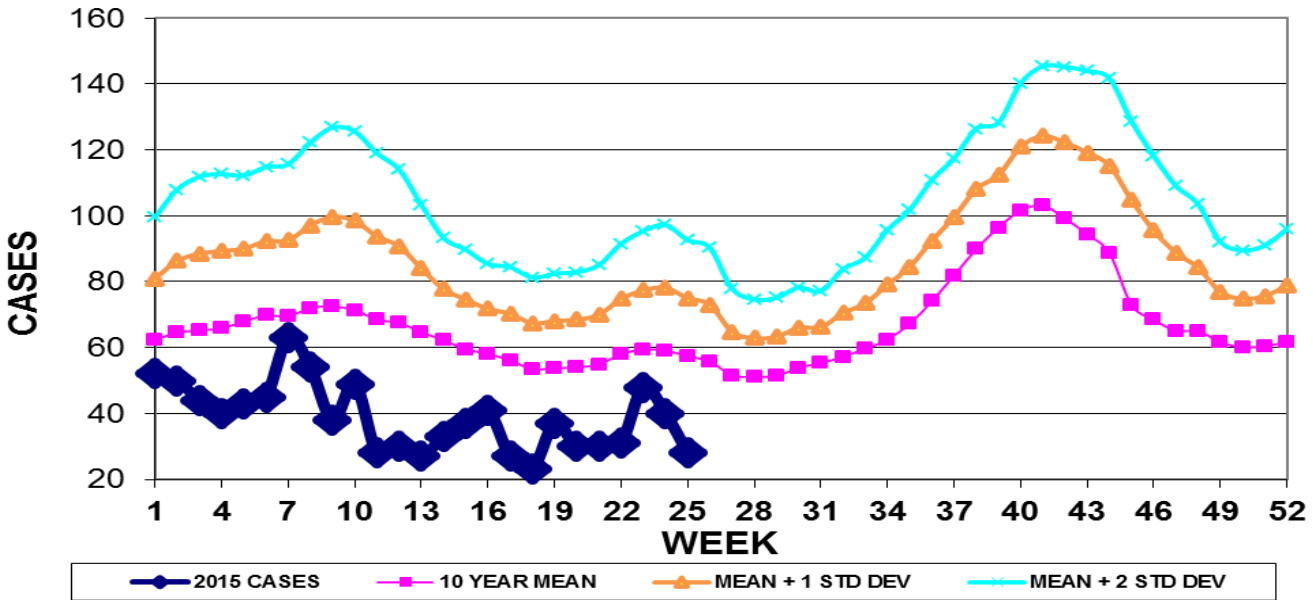


INFECTION CONTROL DEPARTMENT  
 GUAM MEMORIAL HOSPITAL AUTHORITY  
**GUAM EPIDEMIOLOGY NEWSLETTER**

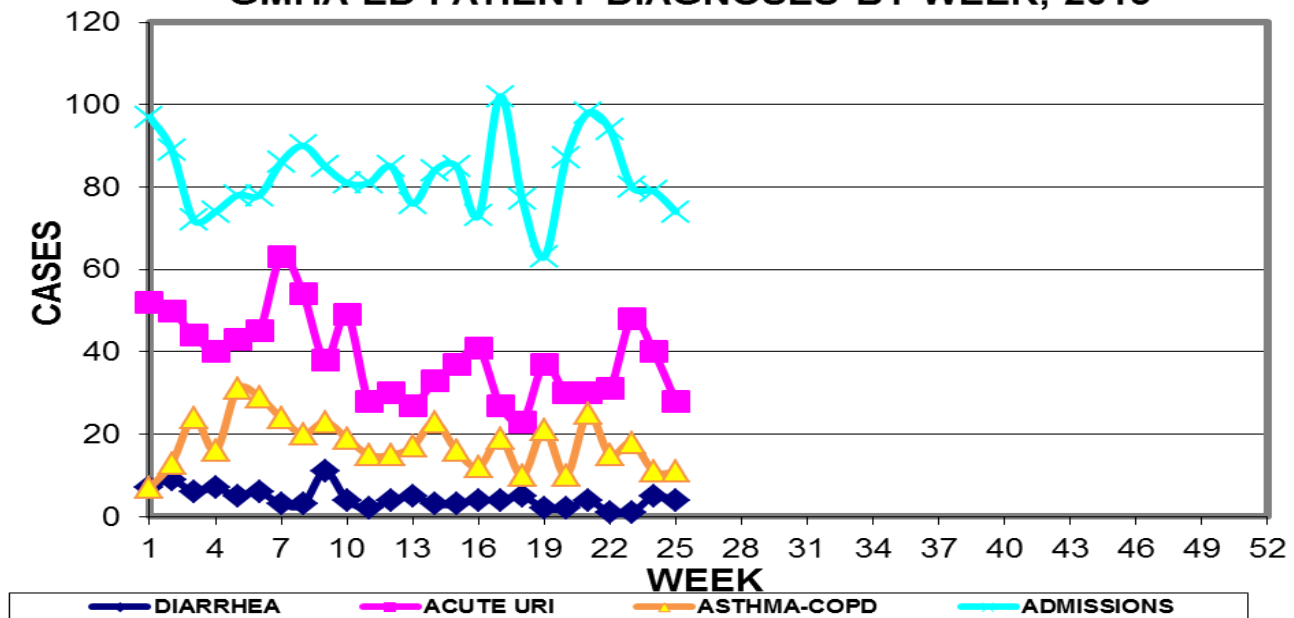
REPORT FOR WEEK ENDING: 6/27/2015 (Reporting week 2015-25)

**GUAM REPORTS**

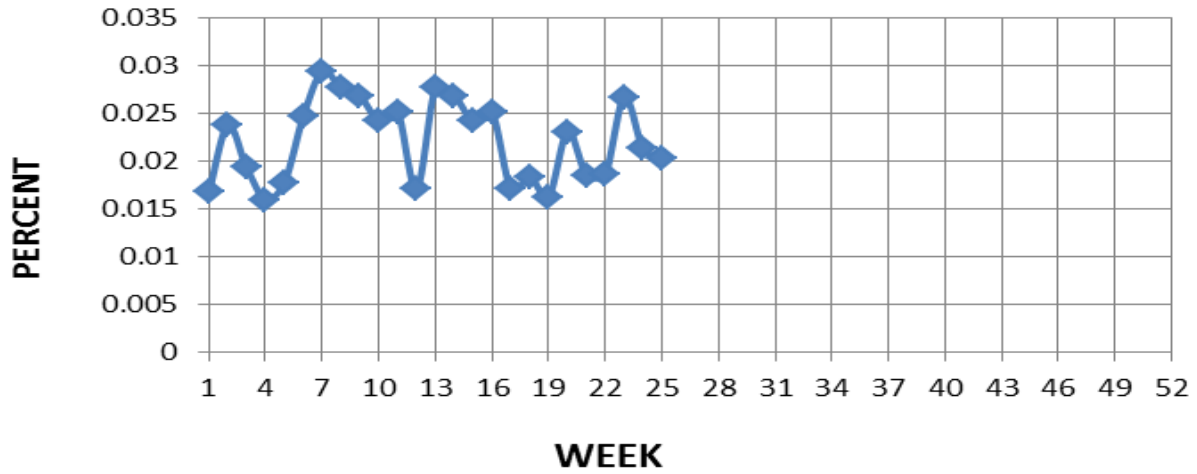
**GUAM ACUTE RESPIRATORY INFECTION SURVEILLANCE 2015;  
 GMHA-EMERGENCY DEPARTMENT PATIENTS BY WEEK SEEN**



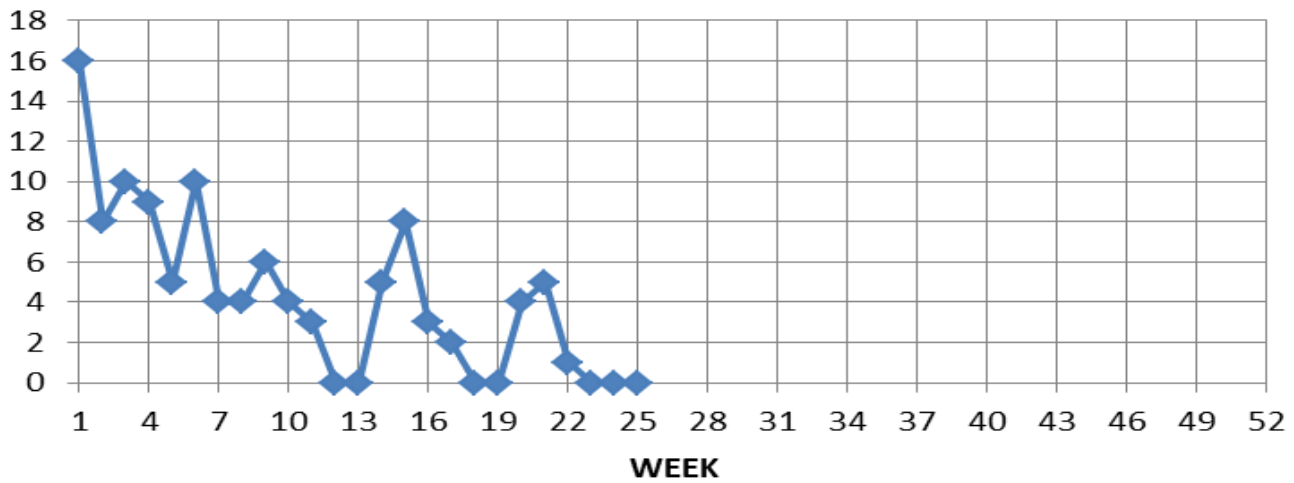
**GUAM SYNDROMIC DISEASE SURVEILLANCE  
 GMHA-ED PATIENT DIAGNOSES BY WEEK, 2015**



**Percent of total GMHA-ER patients with Influenza/ILI symptoms (3-week smoothed)**



**NUMBER OF CASES OF INFLUENZA AND ILI REPORTED BY SENTINEL PHYSICIANS BY WEEK REPORTED, 2015**



**GUAM SENTINEL PHYSICIAN INFLUENZA SURVEILLANCE**

REPORTS OF INFLUENZA OR INFLUENZA-LIKE ILLNESSES  
RECEIVED FOR THE WEEK ENDING 6/27/15

No cases reported by sentinel physicians

Bureau of Communicable Disease Control  
**Guam Department of Public Health & Social Services**  
**H1N1 INFLUENZA SURVEILLANCE, WEEK 25**  
**NO CASES OF H1N1 REPORTED FOR WEEK 25**  
**Cumulative 2015: 0 civilian & 0 military cases**

INFECTION CONTROL DEPARTMENT  
 GUAM MEMORIAL HOSPITAL AUTHORITY  
**HOSPITALIZATIONS FOR INFLUENZA A BY AGE**  
**AND MORBIDITY REPORTING WEEK, 2015**

AGE	14	15	16	17	18	19	20	21	22	23	24	25	TOTAL
0-4													
5-18									1				1
19-24													
25-49													
50-64													
65+													1
TOTAL	0	0	0	0	0	0	0	0	1	0	0	0	2

Bureau of Communicable Disease Control  
**Guam Department of Public Health & Social Services**  
**ISLAND-WIDE COMMUNICABLE DISEASE REPORT**

REPORTS RECEIVED DURING THE WEEK ENDING 6/27/2015

<i>Chlamydia trachomatis</i>	18
Conjunctivitis	3
<i>E. coli</i> MDR	3
Giardiasis	1
Hepatitis A	4
Hepatitis B	2
Hepatitis C	1
HPV	3
Mumps	1
MRSA	6
RSV	1
Scabies	2
Streptococcal sore throat	1
Streptococcal disease, other	3
Tuberculosis	3
VRE	1

INFECTION CONTROL DEPARTMENT  
 GUAM MEMORIAL HOSPITAL AUTHORITY  
**GMHA-EMERGENCY DEPARTMENT CLINICAL DIAGNOSES OF INFLUENZA OR  
 FLU-SYNDROME BY WEEK AND PATIENT'S VILLAGE OF RESIDENCE, 2015**  
 (Villages listed geographically from northern-most to southern-most)

VILLAGE	WEEK										TOTAL	2015 RATE
	16	17	18	19	20	21	22	23	24	25		
Yigo	0	1	1	1	1	1	1	0	1	1	30	143.87
Dededo	5	3	1	4	2	4	1	5	3	1	71	155.61
Tamuning	2	2	1	1	0	0	1	1	1	1	23	115.09
Barrigada	0	0	1	0	1	0	0	1	0	0	11	122.09
Mangilao	1	0	1	2	4	0	1	1	1	0	22	142.65
Mongmong-T-M	1	0	0	1	0	2	0	1	0	0	19	274.21
Hagatña	1	0	0	0	0	0	1	1	0	1	5	468.60
Agaña Heights	0	0	0	0	0	0	0	0	0	0	0	0.00
Sinajana	1	0	0	0	0	0	0	0	0	0	4	152.03
Chalan Pago-Ordot	0	1	0	0	0	0	0	0	0	0	4	57.75
Asan-Maina	0	0	0	0	0	0	0	0	0	0	0	0.00
Piti	0	0	0	0	0	0	0	0	0	0	0	0.00
Santa Rita	0	0	0	0	1	0	0	1	0	1	7	113.32
Agat	1	1	1	0	0	1	0	0	0	0	11	220.35
Yona	0	0	0	0	0	0	1	0	0	0	4	60.80
Talofofo	0	0	0	0	0	0	1	0	1	0	4	129.20
Inarajan	0	1	0	0	0	0	1	0	0	1	7	259.97
Merizo	0	0	0	0	0	0	0	0	0	0	5	266.24
Umatac	0	0	0	0	0	0	0	0	0	0	0	0.00
Tourist	0	0	0	1	0	0	0	0	0	0	5	
Unknown	0	0	0	0	0	0	1	0	0	1	3	
<b>TOTAL</b>	12	9	6	10	9	8	9	11	7	7	239	147.73

NOTE: Rate = cases per 100,000 population for the year to date.

INFLUENZA/ILI ACTIVITY LEVEL - Regional (7 villages affected)  
 (ACTIVITY LEVELS: No activity, Sporadic, Local, Regional, Widespread)

**GUAM ANIMAL DISEASE (ZONOSSES) REPORTS**  
 REPORTS RECEIVED FOR THE WEEK ENDING 6/27/2015

Anaplasmosis – 1 canine, Babesiosis – 1 canine, Ehrlichiosis – 1 canine