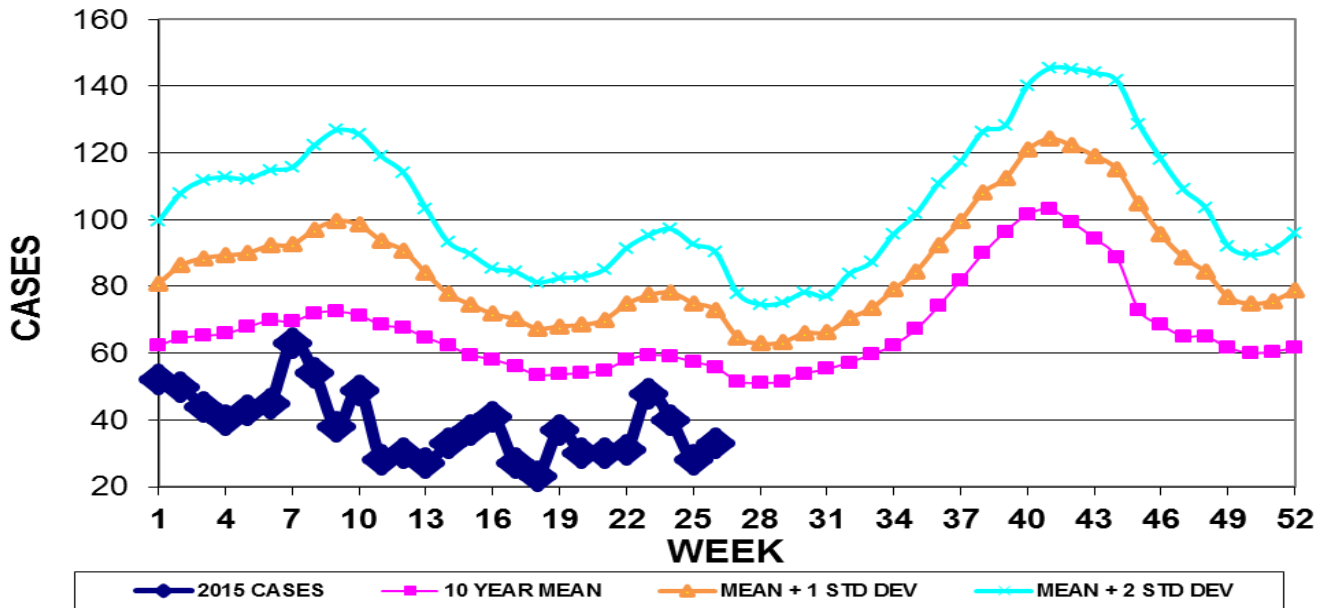


INFECTION CONTROL DEPARTMENT
 GUAM MEMORIAL HOSPITAL AUTHORITY
GUAM EPIDEMIOLOGY NEWSLETTER

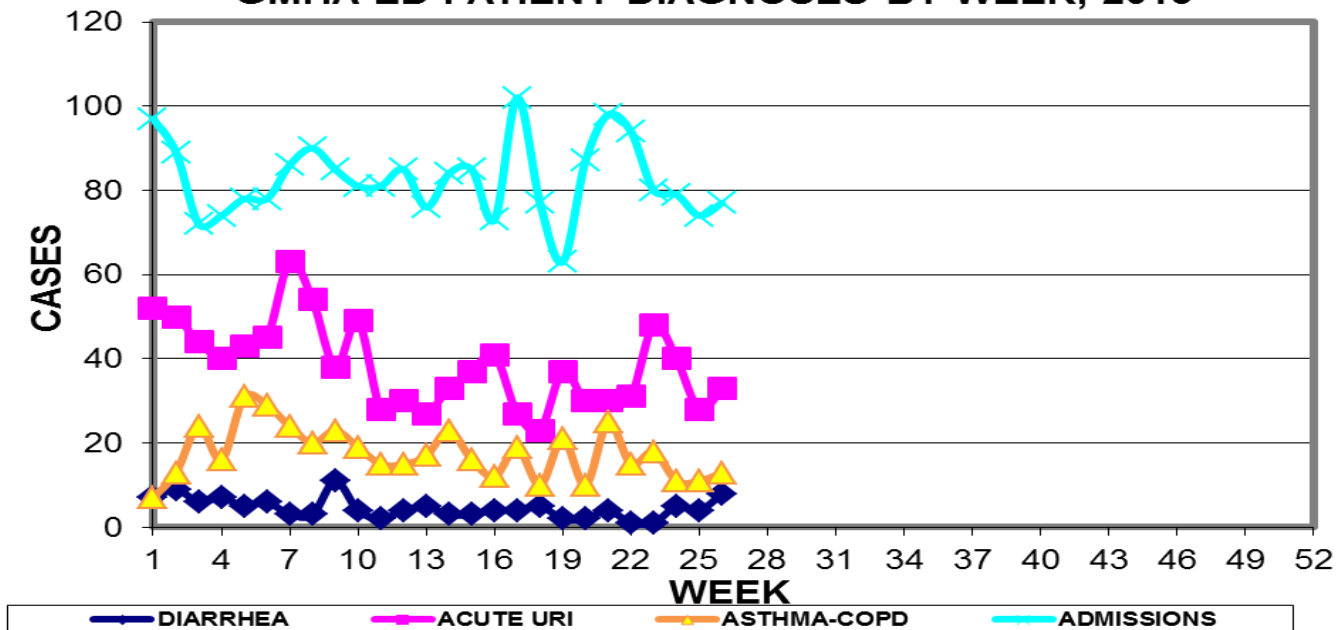
REPORT FOR WEEK ENDING: 7/4/2015 (Reporting week 2015-26)

GUAM REPORTS

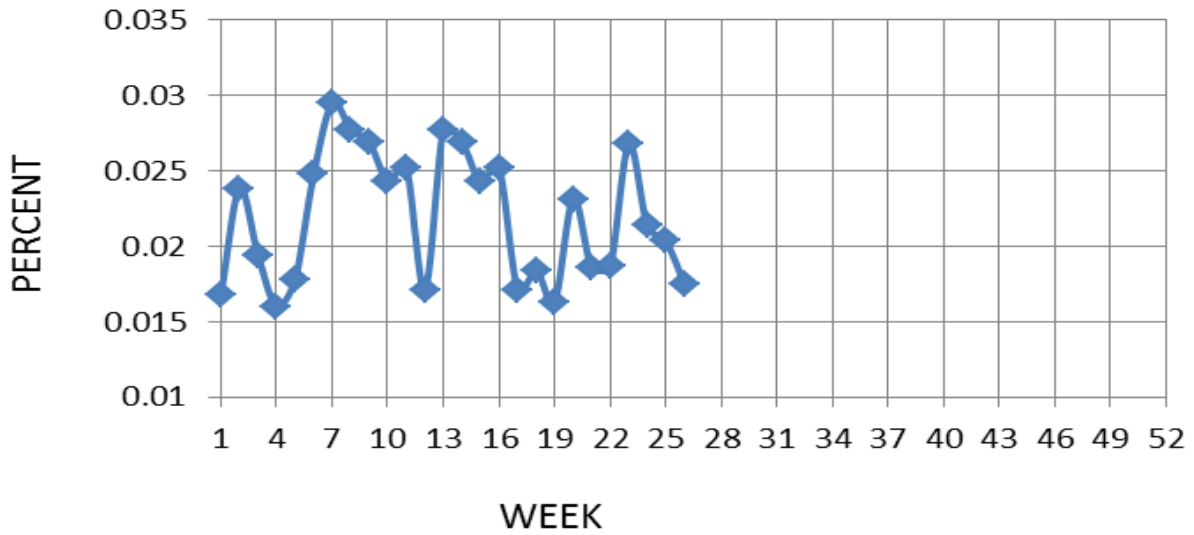
**GUAM ACUTE RESPIRATORY INFECTION SURVEILLANCE 2015;
 GMHA-EMERGENCY DEPARTMENT PATIENTS BY WEEK SEEN**



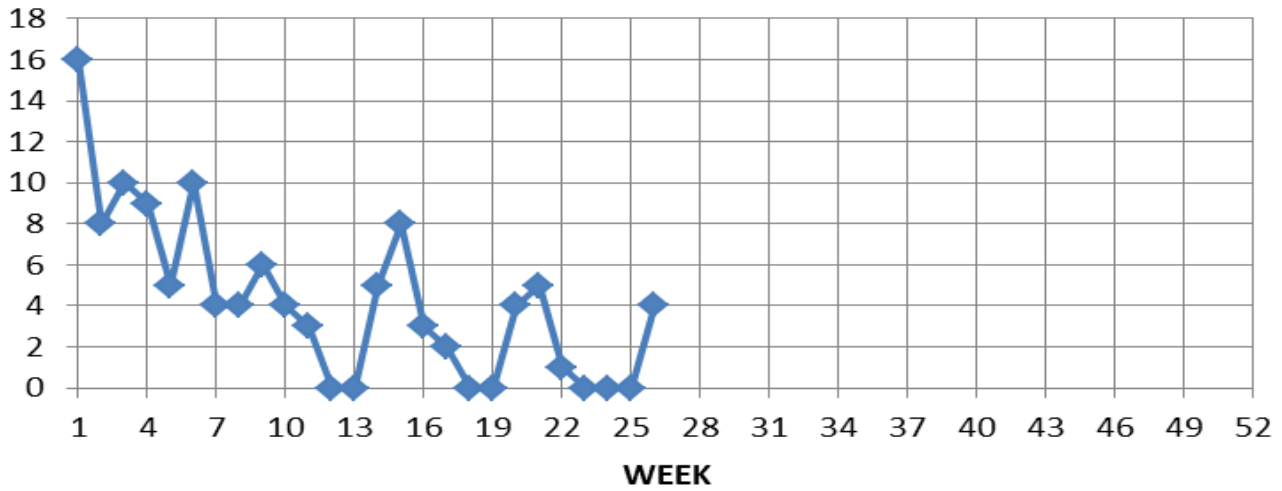
**GUAM SYNDROMIC DISEASE SURVEILLANCE
 GMHA-ED PATIENT DIAGNOSES BY WEEK, 2015**



Percent of total GMHA-ER patients with Influenza/ILI symptoms (3-week smoothed)



NUMBER OF CASES OF INFLUENZA AND ILI REPORTED BY SENTINEL PHYSICIANS BY WEEK REPORTED, 2015



GUAM SENTINEL PHYSICIAN INFLUENZA SURVEILLANCE

REPORTS OF INFLUENZA OR INFLUENZA-LIKE ILLNESSES

RECEIVED FOR THE WEEK ENDING 7/4/15

Four cases reported by sentinel physicians

Bureau of Communicable Disease Control
Guam Department of Public Health & Social Services
H1N1 INFLUENZA SURVEILLANCE, WEEK 26
NO CASES OF H1N1 REPORTED FOR WEEK 26
Cumulative 2015: 0 civilian & 0 military cases

INFECTION CONTROL DEPARTMENT
 GUAM MEMORIAL HOSPITAL AUTHORITY
HOSPITALIZATIONS FOR INFLUENZA A BY AGE
AND MORBIDITY REPORTING WEEK, 2015

AGE	15	16	17	18	19	20	21	22	23	24	25	26	TOTAL
0-4													
5-18								1					1
19-24													
25-49													
50-64													
65+													1
TOTAL	0	0	0	0	0	0	0	1	0	0	0	0	2

Bureau of Communicable Disease Control
Guam Department of Public Health & Social Services
ISLAND-WIDE COMMUNICABLE DISEASE REPORT

REPORTS RECEIVED DURING THE WEEK ENDING 7/4/2015

<i>Chlamydia trachomatis</i>	29
Gonorrhea	2
Hepatitis B	1
HSV 2	2
Influenza A	2
Influenza B	1
MRSA	11
Scabies	1
Streptococcal sore throat	40
Streptococcal disease, other	3
Tuberculosis	2

INFECTION CONTROL DEPARTMENT
 GUAM MEMORIAL HOSPITAL AUTHORITY
**GMHA-EMERGENCY DEPARTMENT CLINICAL DIAGNOSES OF INFLUENZA OR
 FLU-SYNDROME BY WEEK AND PATIENT'S VILLAGE OF RESIDENCE, 2015**
 (Villages listed geographically from northern-most to southern-most)

VILLAGE	WEEK										TOTAL	2015 RATE
	17	18	19	20	21	22	23	24	25	26		
Yigo	1	1	1	1	1	1	0	1	1	0	30	143.87
Dededo	3	1	4	2	4	1	5	3	1	2	73	159.99
Tamuning	2	1	1	0	0	1	1	1	1	2	25	125.09
Barrigada	0	1	0	1	0	0	1	0	0	0	11	122.09
Mangilao	0	1	2	4	0	1	1	1	0	0	22	142.65
Mongmong-T-M	0	0	1	0	2	0	1	0	0	0	19	274.21
Hagatña	0	0	0	0	0	1	1	0	1	1	6	562.32
Agaña Heights	0	0	0	0	0	0	0	0	0	0	0	0.00
Sinajana	0	0	0	0	0	0	0	0	0	0	4	152.03
Chalan Pago-Ordot	1	0	0	0	0	0	0	0	0	0	4	57.75
Asan-Maina	0	0	0	0	0	0	0	0	0	1	1	46.08
Piti	0	0	0	0	0	0	0	0	0	0	0	0.00
Santa Rita	0	0	0	1	0	0	1	0	1		7	113.32
Agat	1	1	0	0	1	0	0	0	0		11	220.35
Yona	0	0	0	0	0	1	0	0	0	1	5	76.00
Talofofo	0	0	0	0	0	1	0	1	0		4	129.20
Inarajan	1	0	0	0	0	1	0	0	1	1	8	346.62
Merizo	0	0	0	0	0	0	0	0	0		5	266.24
Umatac	0	0	0	0	0	0	0	0	0		0	0.00
Tourist	0	0	1	0	0	0	0	0	0		5	
Unknown	0	0	0	0	0	1	0	0	1		3	
TOTAL	9	6	10	9	8	9	11	7	7	8	247	152.67

NOTE: Rate = cases per 100,000 population for the year to date.

INFLUENZA/ILI ACTIVITY LEVEL - Regional (8 villages affected)
 (ACTIVITY LEVELS: No activity, Sporadic, Local, Regional, Widespread)

GUAM ANIMAL DISEASE (ZONOSSES) REPORTS
 REPORTS RECEIVED FOR THE WEEK ENDING 7/4/2015

None received

