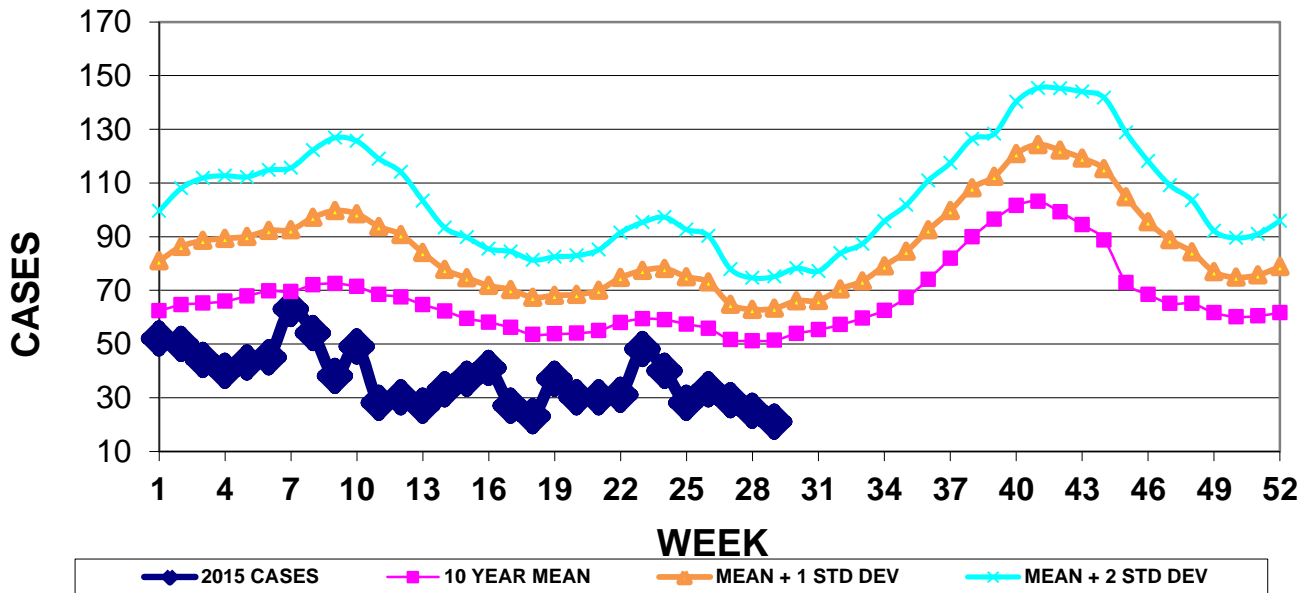


INFECTION CONTROL DEPARTMENT
 GUAM MEMORIAL HOSPITAL AUTHORITY
GUAM EPIDEMIOLOGY NEWSLETTER

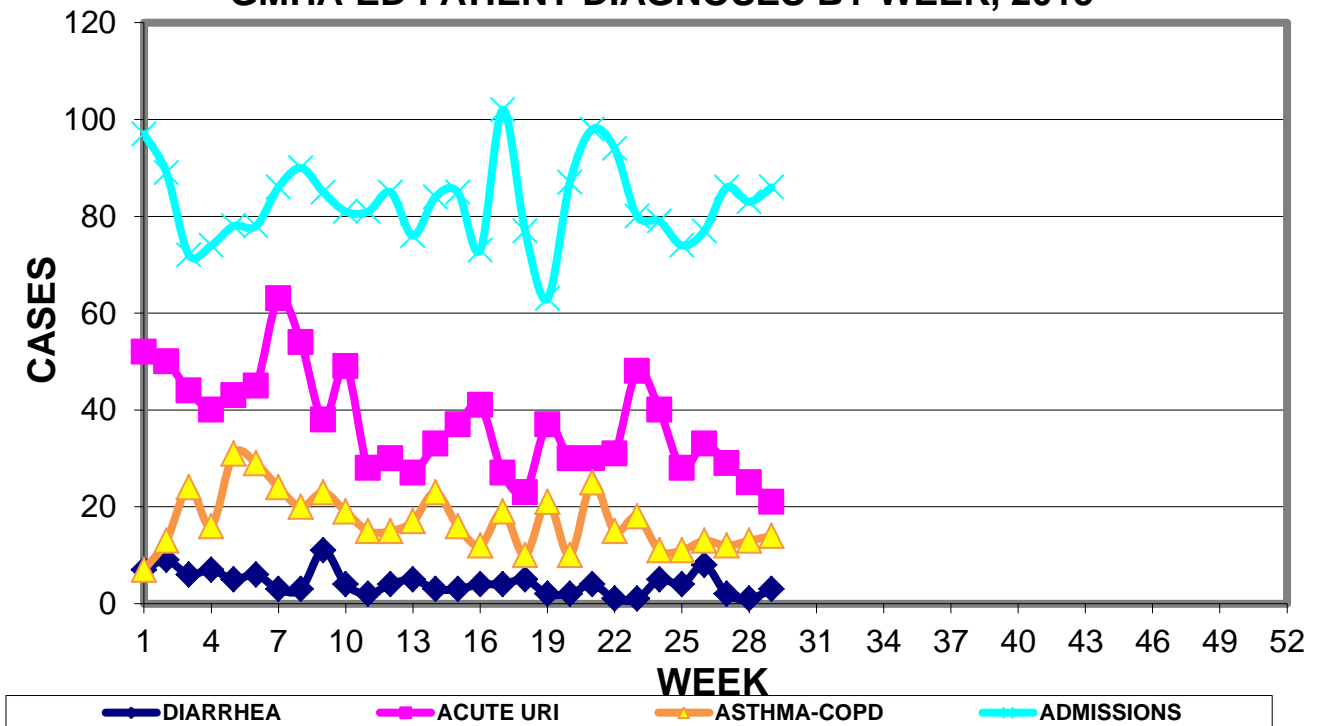
REPORT FOR WEEK ENDING: 7/25/2015 (Reporting week 2015-29)

GUAM REPORTS

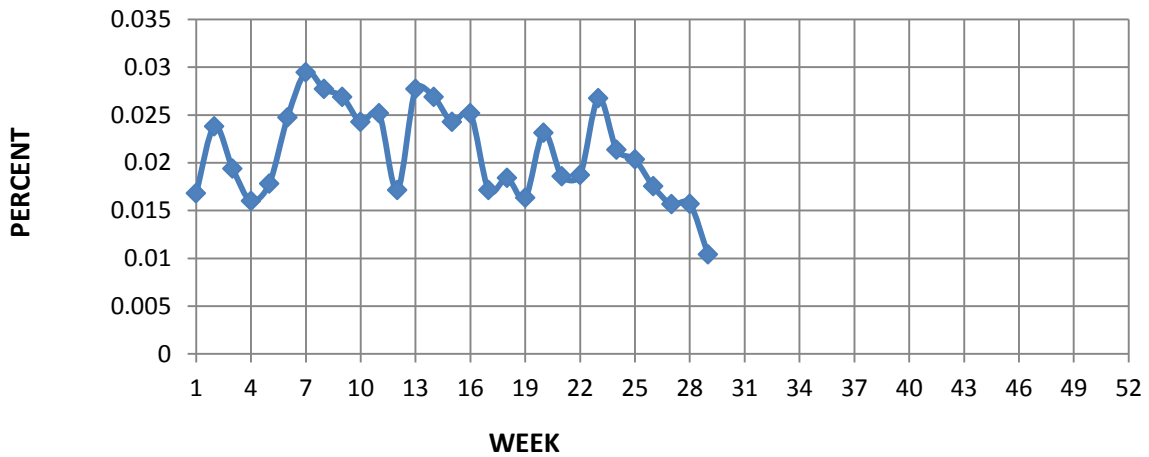
**GUAM ACUTE RESPIRATORY INFECTION SURVEILLANCE 2015;
 GMHA-EMERGENCY DEPARTMENT PATIENTS BY WEEK SEEN**



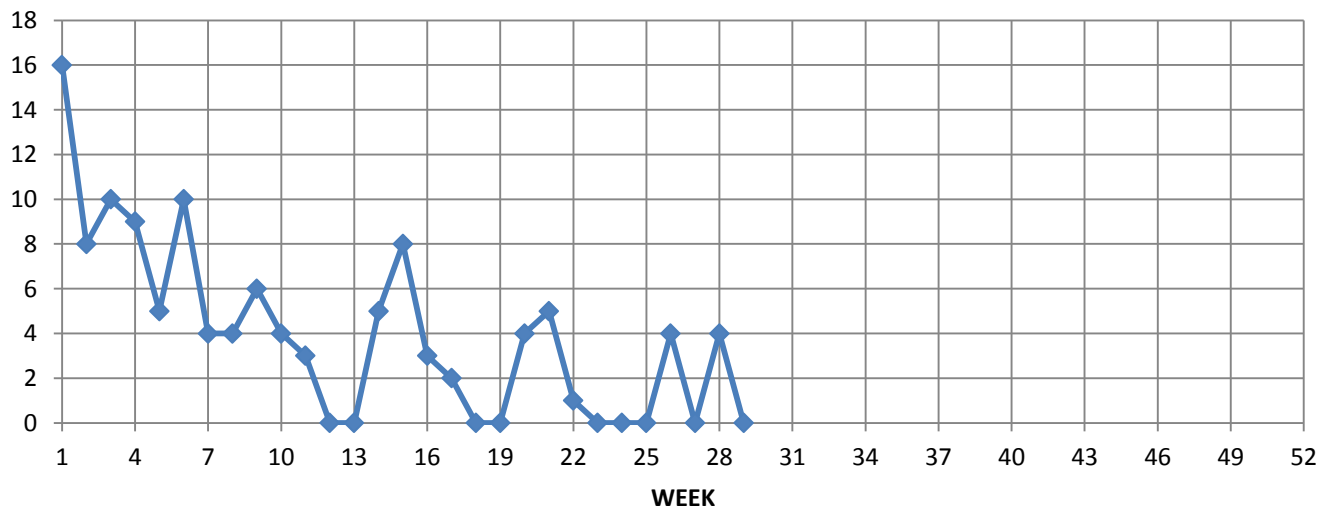
**GUAM SYNDROMIC DISEASE SURVEILLANCE
 GMHA-ED PATIENT DIAGNOSES BY WEEK, 2015**



Percent of total GMHA-ER patients with Influenza/ILI symptoms (3-week smoothed)



NUMBER OF CASES OF INFLUENZA AND ILI REPORTED BY SENTINEL PHYSICIANS BY WEEK REPORTED, 2015



GUAM SENTINEL PHYSICIAN INFLUENZA SURVEILLANCE

REPORTS OF INFLUENZA OR INFLUENZA-LIKE ILLNESSES
RECEIVED FOR THE WEEK ENDING 7/25/15

No cases reported by sentinel physicians

Bureau of Communicable Disease Control
Guam Department of Public Health & Social Services
H1N1 INFLUENZA SURVEILLANCE, WEEK 29
NO CASES OF H1N1 REPORTED FOR WEEK 29
Cumulative 2015: 0 civilian & 0 military cases

INFECTION CONTROL DEPARTMENT
 GUAM MEMORIAL HOSPITAL AUTHORITY
HOSPITALIZATIONS FOR INFLUENZA A BY AGE
AND MORBIDITY REPORTING WEEK, 2015

AGE	18	19	20	21	22	23	24	25	26	27	28	29	TOTAL
0-4													
5-18					1								1
19-24													
25-49													
50-64													
65+													1
TOTAL	0	0	0	0	1	0	0	0	0	0	0	0	2

Bureau of Communicable Disease Control
Guam Department of Public Health & Social Services
ISLAND-WIDE COMMUNICABLE DISEASE REPORT

REPORTS RECEIVED DURING THE WEEK ENDING 7/25/2015

<i>Achromobacter</i> MDR	1
<i>Acinetobacter</i> MDR	1
Chickenpox	5
<i>Chlamydia trachomatis</i>	17
Conjunctivitis	3
<i>E. coli</i> MDR	1
Gonorrhea	3
Hepatitis A	1
Hepatitis B	1
Hepatitis C	1
HPV	1
HSV 2	2
<i>Klebsiella meningitis</i>	1
MRSA	9
Pertussis	1
Scabies	6
Streptococcal sore throat	3
Streptococcal disease, other	1
VRE	2

INFECTION CONTROL DEPARTMENT
 GUAM MEMORIAL HOSPITAL AUTHORITY
**GMHA-EMERGENCY DEPARTMENT CLINICAL DIAGNOSES OF INFLUENZA OR
 FLU-SYNDROME BY WEEK AND PATIENT'S VILLAGE OF RESIDENCE, 2015**
 (Villages listed geographically from northern-most to southern-most)

VILLAGE	WEEK										TOTAL	2015 RATE
	20	21	22	23	24	25	26	27	28	29		
Yigo	1	1	1	0	1	1	0	0	2	0	32	153.46
Dededo	2	4	1	5	3	1	2	1	4	0	78	170.95
Tamuning	0	0	1	1	1	1	2	1	0	0	26	130.10
Barrigada	1	0	0	1	0	0	0	0	0	0	11	122.09
Mangilao	4	0	1	1	1	0	0	1	0	0	23	149.14
Mongmong-T-M	0	2	0	1	0	0	0	0	0	1	20	288.64
Hagatña	0	0	1	1	0	1	1	0	1	0	7	656.04
Agaña Heights	0	0	0	0	0	0	0	0	0	0	0	0.00
Sinajana	0	0	0	0	0	0	0	1	0	0	5	190.04
Chalan Pago-Ordot	0	0	0	0	0	0	0	0	0	0	4	57.75
Asan-Maina	0	0	0	0	0	0	1	0	0	0	1	46.08
Piti	0	0	0	0	0	0	0	0	0	0	0	0.00
Santa Rita	1	0	0	1	0	1	0	0	0	0	7	113.32
Agat	0	1	0	0	0	0	0	0	0	0	11	220.35
Yona	0	0	1	0	0	0	1	1	1	0	7	106.40
Talofof	0	0	1	0	1	0	0	0	0	0	4	129.20
Inarajan	0	0	1	0	0	1	1	0	0	0	8	346.62
Merizo	0	0	0	0	0	0	0	0	0	0	5	266.24
Umatac	0	0	0	0	0	0	0	0	0	0	0	0.00
Tourist	0	0	0	0	0	0	0	0	0	0	5	
Unknown	0	0	1	0	0	1	0	0	0	0	3	
TOTAL	9	8	9	11	7	7	8	5	8	1	260	160.71

NOTE: Rate = cases per 100,000 population for the year to date.

INFLUENZA/ILI ACTIVITY LEVEL - SPORADIC (1 village affected)
 (ACTIVITY LEVELS: No activity, Sporadic, Local, Regional, Widespread)

GUAM ANIMAL DISEASE (ZONOSSES) REPORTS

Anaplasmosis – 4 canine, Babesiosis – 1 canine