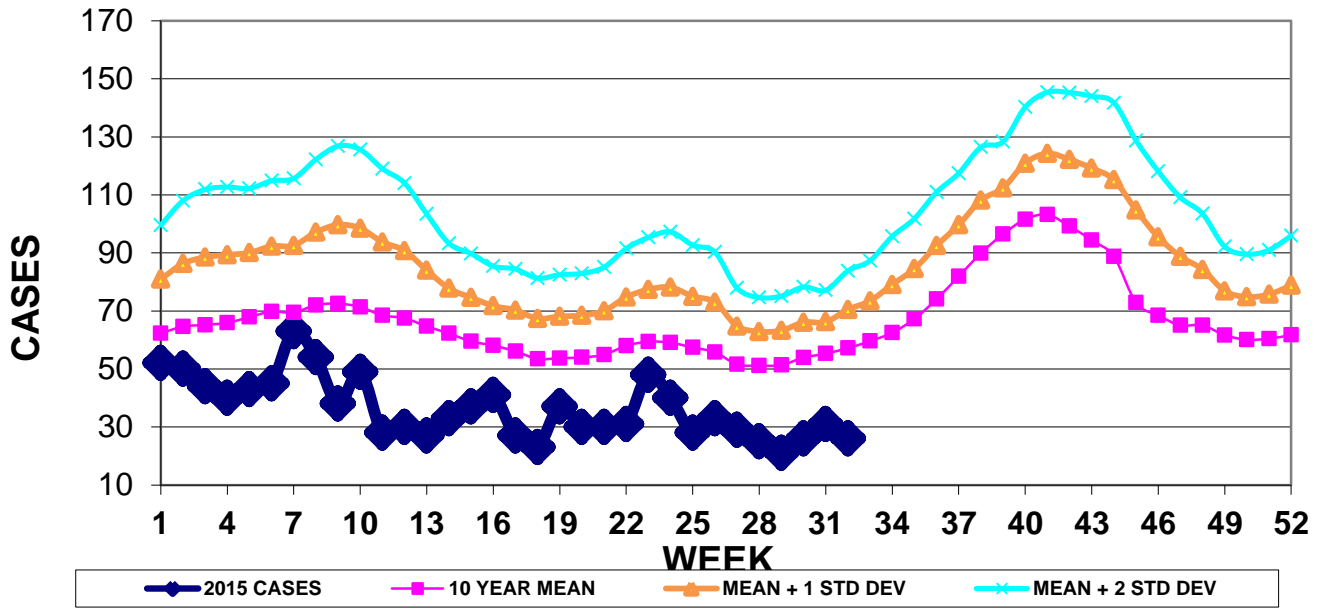


INFECTION CONTROL DEPARTMENT  
 GUAM MEMORIAL HOSPITAL AUTHORITY  
**GUAM EPIDEMIOLOGY NEWSLETTER**

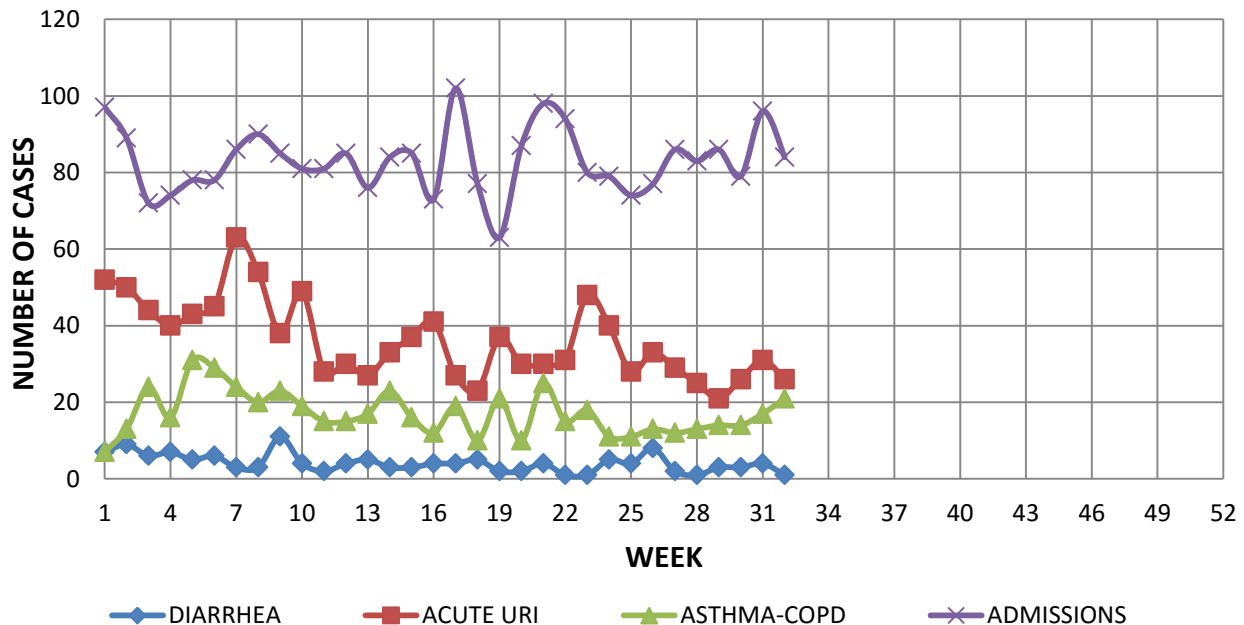
REPORT FOR WEEK ENDING: 8/15/2015 (Reporting week 2015-32)

**GUAM REPORTS**

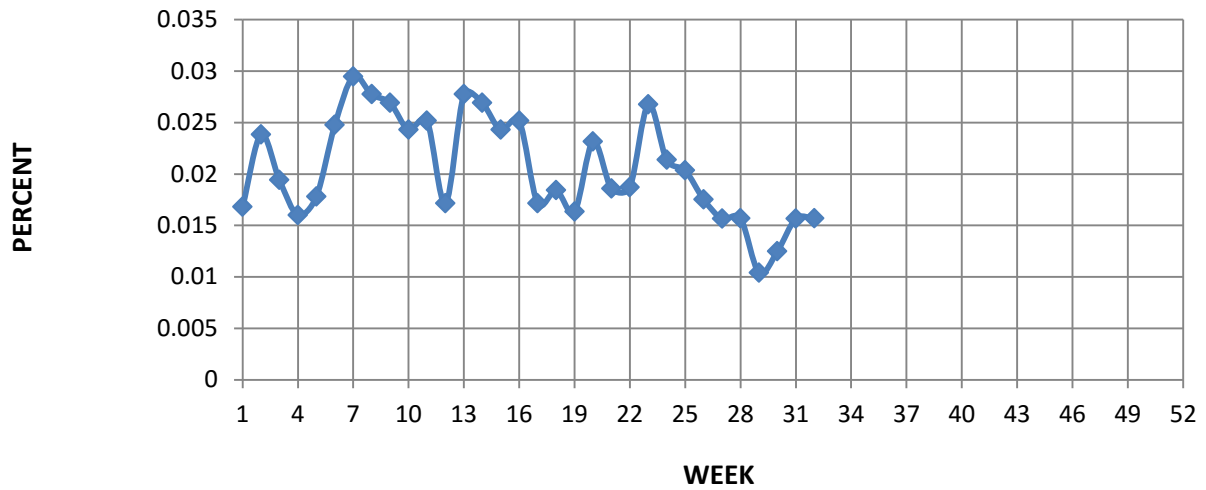
**GUAM ACUTE RESPIRATORY INFECTION SURVEILLANCE 2015;  
 GMHA-EMERGENCY DEPARTMENT PATIENTS BY WEEK SEEN**



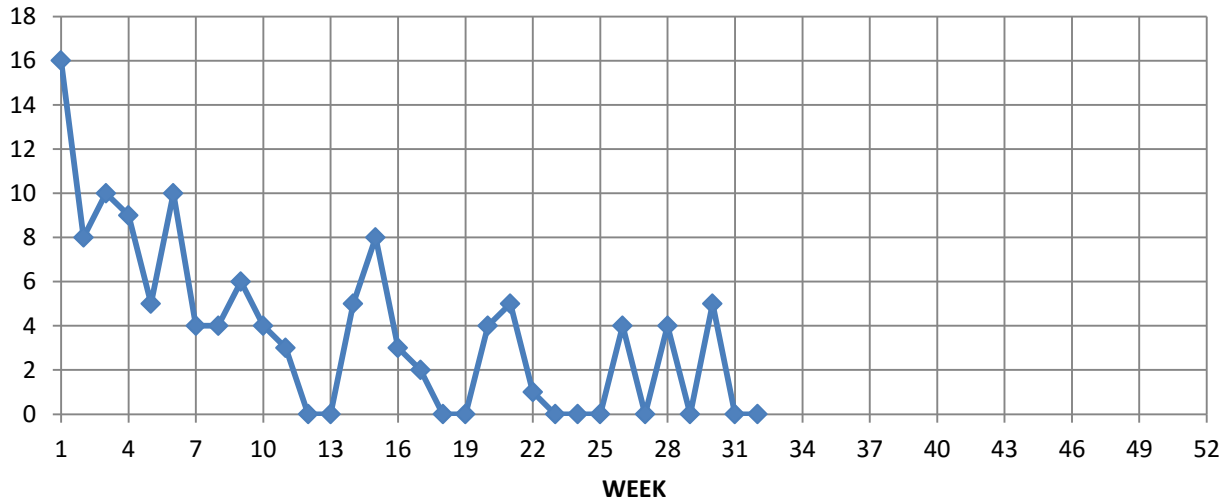
**GUAM SYNDROMIC DISEASE SURVEILLANCE;  
 GMHA-ED PATIENT DIAGNOSES BY WEEK SEEN-2015**



**Percent of GMHA-ER patients with  
Influenza/ILI symptoms (3-week smoothed)**



**NUMBER OF CASES OF INFLUENZA AND ILI REPORTED BY SENTINEL  
PHYSICIANS BY WEEK REPORTED, 2015**



**GUAM SENTINEL PHYSICIAN INFLUENZA SURVEILLANCE**  
 REPORTS OF INFLUENZA OR INFLUENZA-LIKE ILLNESSES  
 RECEIVED FOR THE WEEK ENDING 8/15/15  
 No cases reported by sentinel physicians

Bureau of Communicable Disease Control  
**Guam Department of Public Health & Social Services**  
**H1N1 INFLUENZA SURVEILLANCE, WEEK 32**  
**NO CASES OF H1N1 REPORTED FOR WEEK 32**  
**Cumulative 2015: 0 civilian & 0 military cases**

INFECTION CONTROL DEPARTMENT  
 GUAM MEMORIAL HOSPITAL AUTHORITY  
**HOSPITALIZATIONS FOR INFLUENZA A BY AGE**  
**AND MORBIDITY REPORTING WEEK, 2015**

AGE	21	22	23	24	25	26	27	28	29	30	31	32	TOTAL
0-4													
5-18		1											1
19-24													
25-49													
50-64													
65+													1
TOTAL	0	1	0	0	0	0	0	0	0	0	0	0	2

Bureau of Communicable Disease Control  
**Guam Department of Public Health & Social Services**  
**ISLAND-WIDE COMMUNICABLE DISEASE REPORT**

REPORTS RECEIVED DURING THE WEEK ENDING 8/15/2015

<i>Acinetobacter baumannii</i> MDR	1
<i>Chlamydia trachomatis</i>	22
<i>Clostridium difficile</i>	3
Conjunctivitis	2
<i>E. coli</i> MDR	2
Gonorrhea	6
Hepatitis A	1
<i>Klebsiella pneumoniae</i> MDR	5
MRSA	16
Salmonellosis	1
Scabies	1
Shigellosis	1
Streptococcal sore throat	1
Streptococcal disease, other	6
VRE	1

INFECTION CONTROL DEPARTMENT  
 GUAM MEMORIAL HOSPITAL AUTHORITY  
**GMHA-EMERGENCY DEPARTMENT CLINICAL DIAGNOSES OF INFLUENZA OR  
 FLU-SYNDROME BY WEEK AND PATIENT'S VILLAGE OF RESIDENCE, 2015**  
 (Villages listed geographically from northern-most to southern-most)

VILLAGE	WEEK										TOTAL	2015 RATE
	23	24	25	26	27	28	29	30	31	32		
Yigo	0	1	1	0	0	2	0	2	2	0	36	177.53
Dededo	5	3	1	2	1	4	0	0	3	2	83	181.91
Tamuning	1	1	1	2	1	0	0	1	0	1	28	140.11
Barrigada	1	0	0	0	0	0	0	0	0	0	11	122.09
Mangilao	1	1	0	0	1	0	0	0	0	0	23	149.14
Mongmong-T-M	1	0	0	0	0	0	1	0	0	1	21	303.09
Hagatña	1	0	1	1	0	1	0	0	0	0	7	656.04
Agaña Heights	0	0	0	0	0	0	0	0	0	0	0	0.00
Sinajana	0	0	0	0	1	0	0	0	0	0	5	190.04
Chalan Pago-Ordot	0	0	0	0	0	0	0	1	0	0	5	72.19
Asan-Maina	0	0	0	1	0	0	0	0	0	0	1	46.08
Piti	0	0	0	0	0	0	0	0	1	0	1	67.75
Santa Rita	1	0	1	0	0	0	0	0	0	0	7	113.32
Agat	0	0	0	0	0	0	0	2	0	1	14	280.45
Yona	0	0	0	1	1	1	0	1	0	0	8	121.60
Talofof	0	1	0	0	0	0	0	0	0	0	4	129.20
Inarajan	0	0	1	1	0	0	0	0	0	0	8	346.62
Merizo	0	0	0	0	0	0	0	0	0	0	5	266.24
Umatac	0	0	0	0	0	0	0	1	0	0	2	251.89
Tourist	0	0	0	0	0	0	0	0	0	0	5	
Unknown	0	0	1	0	0	0	0	0	0	0	3	
<b>TOTAL</b>	11	7	7	8	5	8	1	8	6	5	280	173.07

NOTE: Rate = cases per 100,000 population for the year to date.

INFLUENZA/ILI ACTIVITY LEVEL - REGIONAL (5 villages affected)  
 (ACTIVITY LEVELS: No activity, Sporadic, Local, Regional, Widespread)

## GUAM ANIMAL DISEASE (ZONOSSES) REPORTS

Anaplasmosis – 5 canine, Ehrlichiosis – 4 canine

# Pacific syndromic surveillance report (WHO)

Week ending 26 July, 2015

The following **syndromes** have been flagged:

- Influenza-like illness: Kiribati, New Zealand, Tokelau
- Prolonged Fever: Tonga

## Other updates

### Chikungunya

- Cook Islands have reported a total of 758 cases since October 2014, including 3 new cases in the week ending on July 26 2015. The weekly number of cases is decreasing.
- Marshall Islands reports 1,223 cases since early February 2015, including 22 new cases in the week ending 26 July 2015.

### Dengue

- Outbreaks are occurring in American Samoa (dengue serotype-3); in the Macuata Sub division of Fiji (dengue serotype-2) and Samoa (dengue serotype-3).
- American Samoa has reported four deaths and more than 150 suspected cases as the outbreak enters its ninth week. For further details click [Here](#)
- Samoa has reported 55 confirmed cases, 4 hospitalized cases but no deaths. For further details click [Here](#)

### Middle East respiratory syndrome coronavirus (MERS-CoV)

- As of 29 July 2015, a total of 186 confirmed cases and 36 deaths have been reported since the beginning of the outbreak on 20 May 2015. Of the cases; 185 are in the Republic of Korea (ROK) and 1 in China. This is the 23rd consecutive day with no new cases reported from the ROK (as of 28 July).

### Ebola Virus Disease (EVD)

- There were 7 confirmed cases of EVD reported in the week to 26 July: 4 in Guinea and 3 in Sierra Leone. Liberia reported no new cases. This was the lowest weekly total for over a year.
- There have been a total of 27,748 confirmed, reported or suspected cases (11279 deaths) of EVD in these three countries as of 26 July.

Source: [http://www.wpro.who.int/southpacific/programmes/communicable\\_diseases/disease\\_surveillance\\_response/PSS-26-July-2015/en/](http://www.wpro.who.int/southpacific/programmes/communicable_diseases/disease_surveillance_response/PSS-26-July-2015/en/)