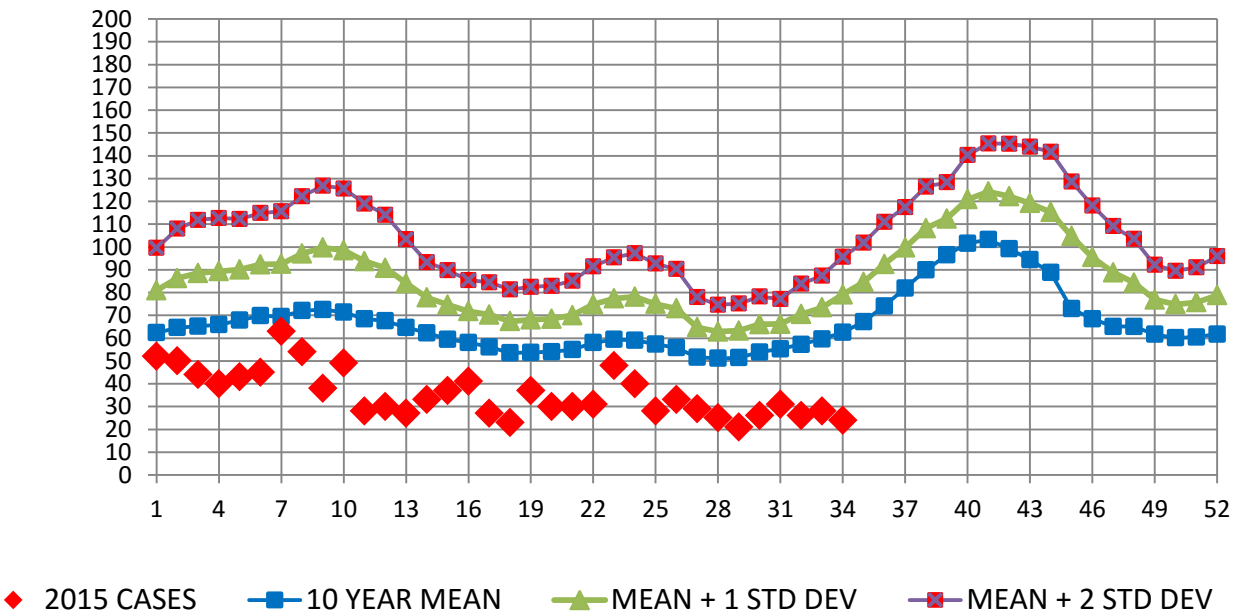


INFECTION CONTROL DEPARTMENT
 GUAM MEMORIAL HOSPITAL AUTHORITY
GUAM EPIDEMIOLOGY NEWSLETTER

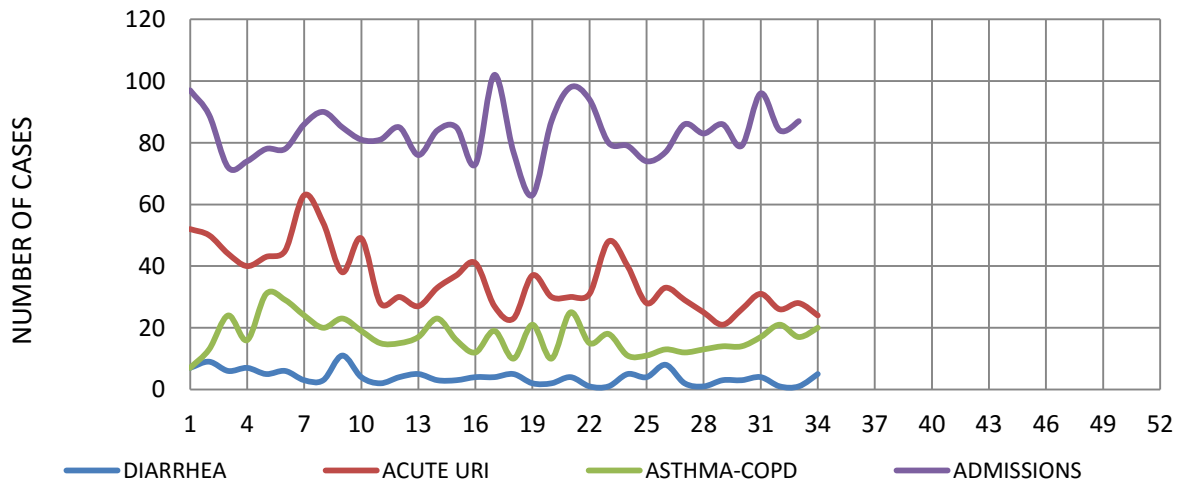
REPORT FOR WEEK ENDING: 8/29/2015 (Reporting week 2015-34)

GUAM REPORTS

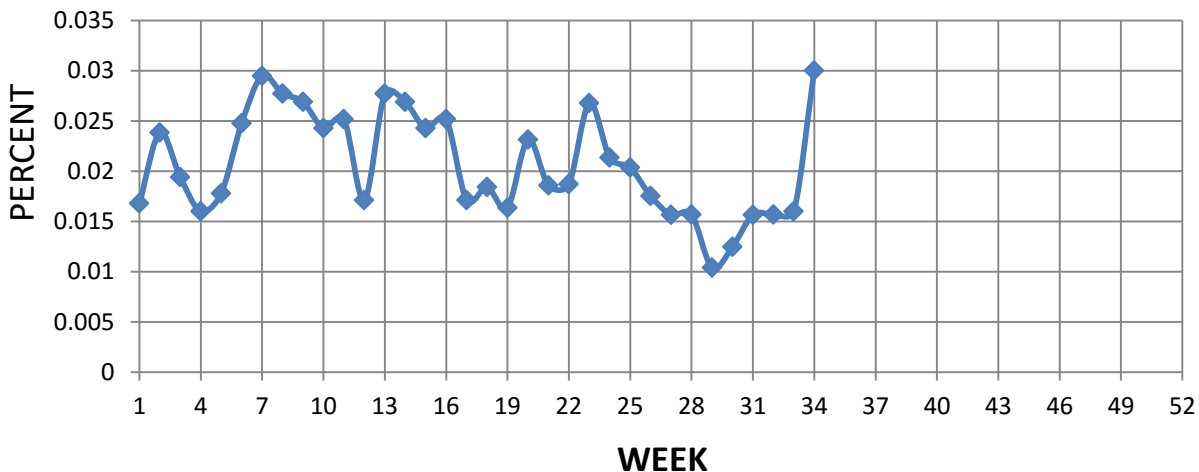
**GUAM ACUTE RESPIRATORY INFECTION SURVEILLANCE 2015;
 GMHA EMERGENCY DEPARTMENT PATIENTS BY WEEK SEEN**



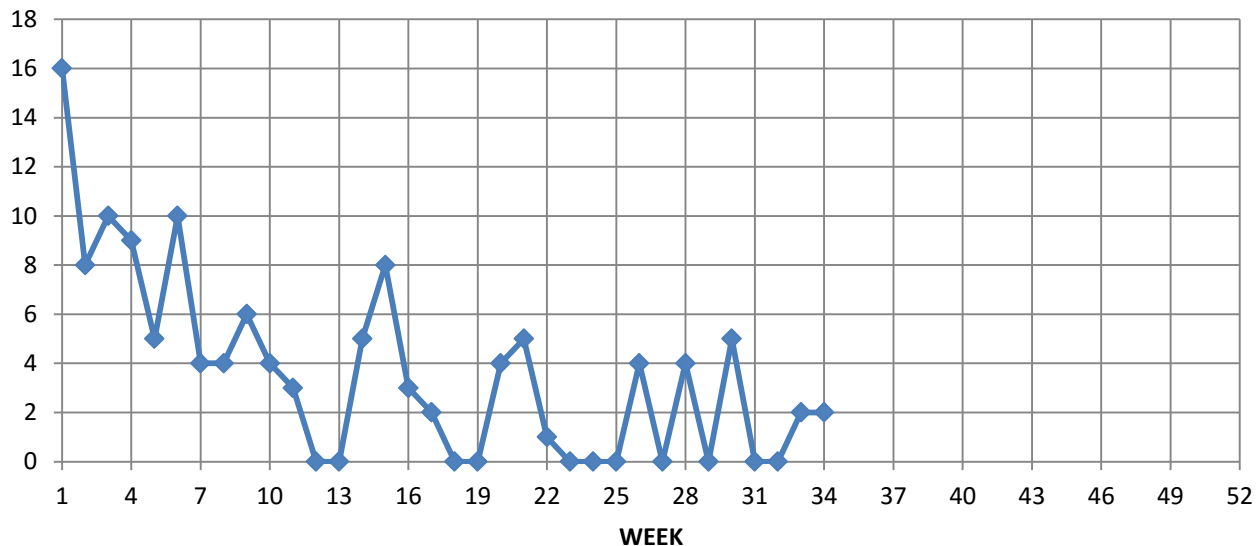
**GUAM SYNDROMIC DISEASE SURVEILLANCE;
 GMHA-ED PATIENT DIAGNOSES BY WEEK, 2015**



**Percent of total GMHA-ER patients with
Influenza/ILI symptoms (3-week smoothed)**



**NUMBER OF CASES OF INFLUENZA AND ILI REPORTED BY
SENTINEL PHYSICIANS BY WEEK REPORTED, 2015**



GUAM SENTINEL PHYSICIAN INFLUENZA SURVEILLANCE

REPORTS OF INFLUENZA OR INFLUENZA-LIKE ILLNESSES
RECEIVED FOR THE WEEK ENDING 8/29/15

Two cases reported by sentinel physicians

Bureau of Communicable Disease Control
Guam Department of Public Health & Social Services
H1N1 INFLUENZA SURVEILLANCE, WEEK 34
NO CASES OF H1N1 REPORTED FOR WEEK 34
Cumulative 2015: 0 civilian & 0 military cases

INFECTION CONTROL DEPARTMENT
 GUAM MEMORIAL HOSPITAL AUTHORITY
HOSPITALIZATIONS FOR INFLUENZA A BY AGE
AND MORBIDITY REPORTING WEEK, 2015

AGE	22	23	24	25	26	27	28	29	30	31	32	33	34	TOTAL
0-4														
5-18	1													1
19-24														
25-49														
50-64														
65+														1
TOTAL	1	0	0	0	0	0	0	0	0	0	0	0	0	2

Bureau of Communicable Disease Control
Guam Department of Public Health & Social Services
ISLAND-WIDE COMMUNICABLE DISEASE REPORT

REPORTS RECEIVED DURING THE WEEK ENDING 8/29/2015

<i>Acinetobacter baumannii</i> MDR	1
Carbapenem-resis. <i>Enterobacteriaceae</i>	3
Chickenpox	1
<i>Chlamydia trachomatis</i>	23
Conjunctivitis	2
<i>E. coli</i> MDR	4
Gonorrhea	1
Hepatitis B	4
Hepatitis C	5
<i>Klebsiella pneumoniae</i> MDR	4
Leptospirosis	1
MRSA	6
Scabies	5
Streptococcal sore throat	3
Streptococcal disease, other	3
VRE	1

INFECTION CONTROL DEPARTMENT
 GUAM MEMORIAL HOSPITAL AUTHORITY
**GMHA-EMERGENCY DEPARTMENT CLINICAL DIAGNOSES OF INFLUENZA OR
 FLU-SYNDROME BY WEEK AND PATIENT'S VILLAGE OF RESIDENCE, 2015**
 (Villages listed geographically from northern-most to southern-most)

VILLAGE	WEEK										TOTAL	2015 RATE
	25	26	27	28	29	30	31	32	33	34		
Yigo	1	0	0	2	0	2	2	0	2	1	39	187.03
Dededo	1	2	1	4	0	0	3	2	3	2	88	192.87
Tamuning	1	2	1	0	0	1	0	1	2	1	31	155.12
Barrigada	0	0	0	0	0	0	0	0	0	0	11	122.09
Mangilao	0	0	1	0	0	0	0	0	0	0	23	149.14
Mongmong-T-M	0	0	0	0	1	0	0	1	0	1	22	317.51
Hagatña	1	1	0	1	0	0	0	0	0	0	7	656.04
Agaña Heights	0	0	0	0	0	0	0	0	0	0	0	0.00
Sinajana	0	0	1	0	0	0	0	0	0	0	5	190.04
Chalan Pago-Ordot	0	0	0	0	0	1	0	0	0	1	5	72.19
Asan-Maina	0	1	0	0	0	0	0	0	0	0	1	46.08
Piti	0	0	0	0	0	0	1	0	0	0	1	67.75
Santa Rita	1	0	0	0	0	0	0	0	0	1	8	129.51
Agat	0	0	0	0	0	2	0	1	1	1	16	320.51
Yona	0	1	1	1	0	1	0	0	1	1	10	152.00
Talofof	0	0	0	0	0	0	0	0	0	0	4	129.20
Inarajan	1	1	0	0	0	0	0	0	0	0	8	346.62
Merizo	0	0	0	0	0	0	0	0	0	0	5	266.24
Umatac	0	0	0	0	0	1	0	0	0	0	2	251.89
Tourist	0	0	0	0	0	0	0	0	1	0	6	
Unknown	1	0	0	0	0	0	0	0	0	0	3	
TOTAL	7	8	5	8	1	8	6	5	10	9	299	184.81

NOTE: Rate = cases per 100,000 population for the year to date.

INFLUENZA/ILI ACTIVITY LEVEL - REGIONAL (5 villages affected)
 (ACTIVITY LEVELS: No activity, Sporadic, Local, Regional, Widespread)

GUAM ANIMAL DISEASE (ZONOSSES) REPORTS

Anaplasmosis – 1 canine, Ehrlichiosis – 2 canine