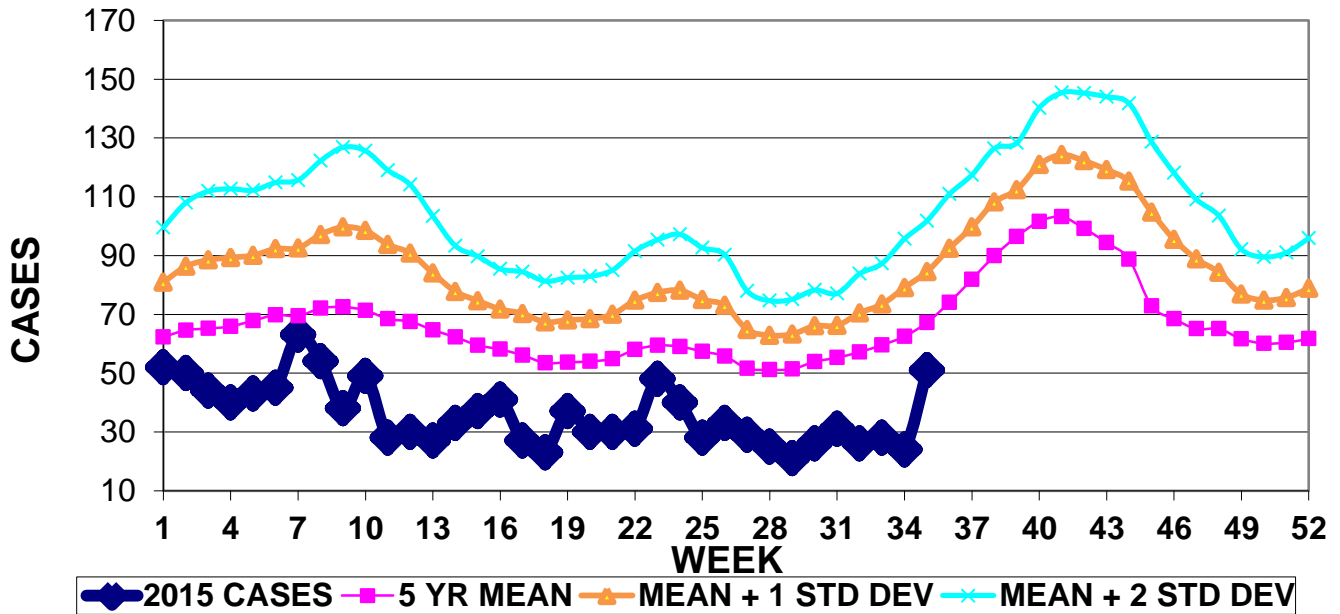


INFECTION CONTROL DEPARTMENT
 GUAM MEMORIAL HOSPITAL AUTHORITY
GUAM EPIDEMIOLOGY NEWSLETTER

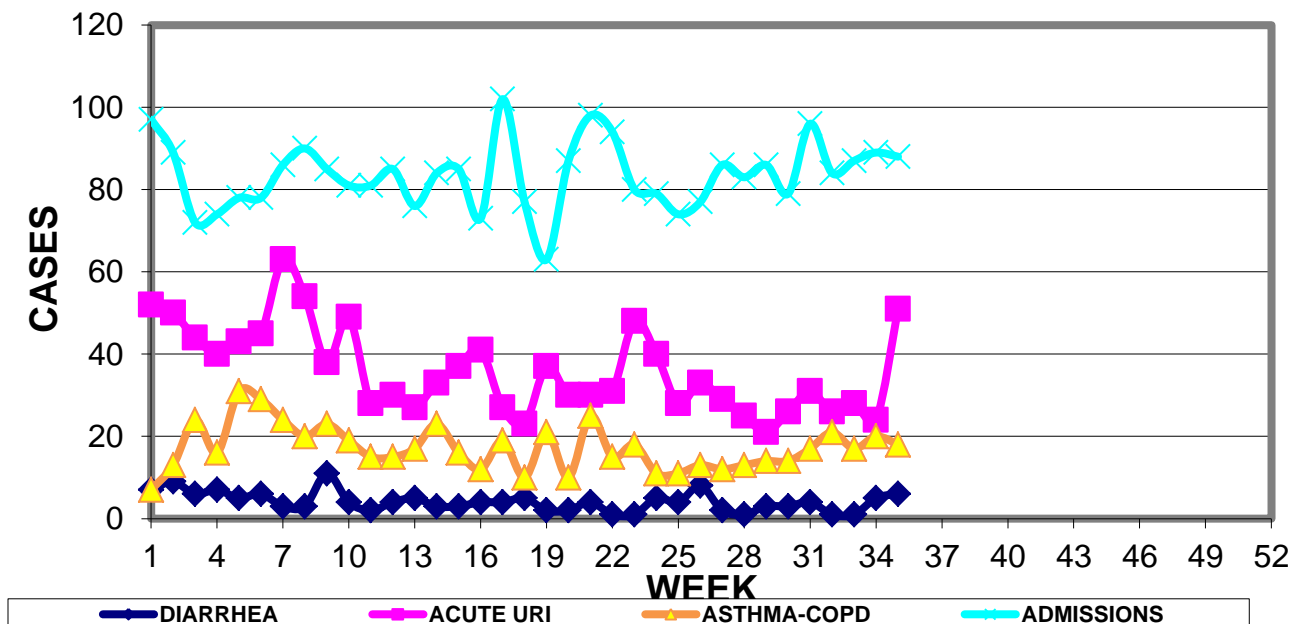
REPORT FOR WEEK ENDING: 9/5/2015 (Reporting week 2015-35)

GUAM REPORTS

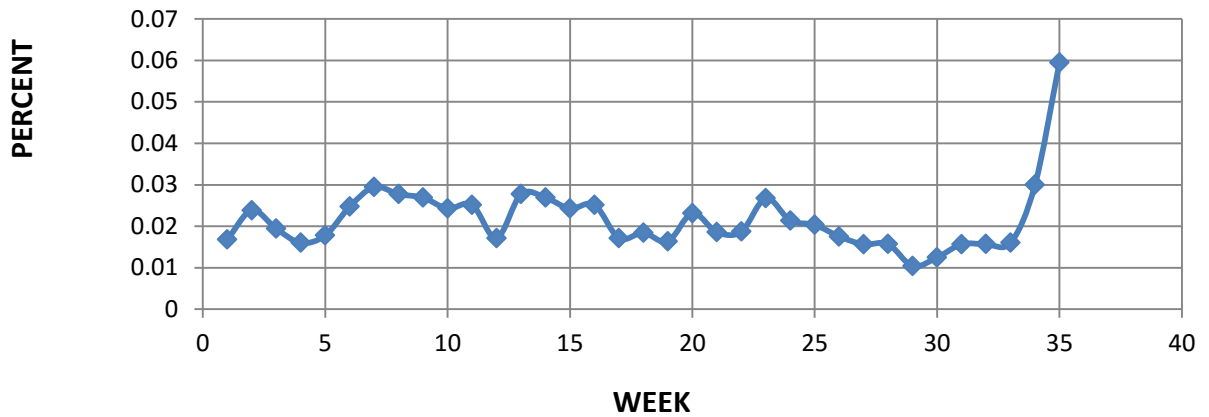
**GUAM ACUTE RESPIRATORY INFECTION SURVEILLANCE 2015;
 GMHA-EMERGENCY DEPARTMENT PATIENTS BY WEEK SEEN**



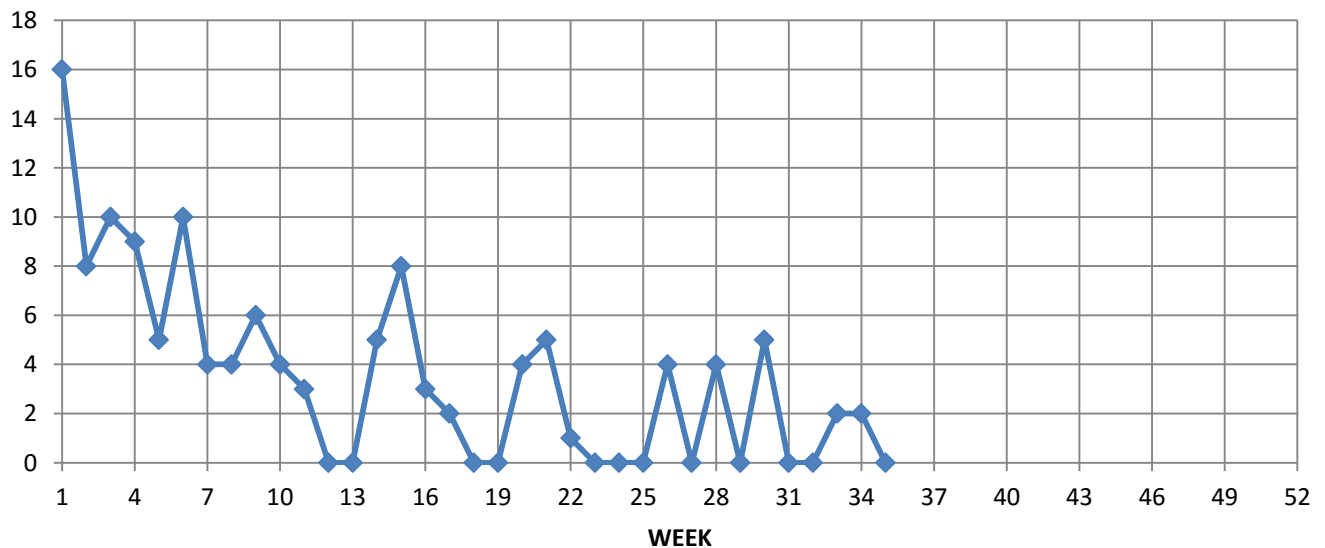
**GUAM SYNDROMIC DISEASE SURVEILLANCE
 GMHA-ED PATIENT DIAGNOSES BY WEEK, 2015**



Percent of total GMHA-ER patients with Influenza/ILI symptoms (3-week smoothed)



NUMBER OF CASES OF INFLUENZA AND ILI REPORTED BY SENTINEL PHYSICIANS BY WEEK REPORTED, 2015



GUAM SENTINEL PHYSICIAN INFLUENZA SURVEILLANCE

REPORTS OF INFLUENZA OR INFLUENZA-LIKE ILLNESSES
RECEIVED FOR THE WEEK ENDING 9/5/15

No cases reported by sentinel physicians

Bureau of Communicable Disease Control
Guam Department of Public Health & Social Services
H1N1 INFLUENZA SURVEILLANCE, WEEK 35
NO CASES OF H1N1 REPORTED FOR WEEK 35
Cumulative 2015: 0 civilian & 0 military cases

INFECTION CONTROL DEPARTMENT
 GUAM MEMORIAL HOSPITAL AUTHORITY
**HOSPITALIZATIONS FOR INFLUENZA A BY AGE
 AND MORBIDITY REPORTING WEEK, 2015**

AGE	23	24	25	26	27	28	29	30	31	32	33	34	35	TOTAL
0-4													1	1
5-18														1
19-24														
25-49														
50-64														
65+														1
TOTAL	0	0	0	0	0	0	0	0	0	0	0	0	1	3

Bureau of Communicable Disease Control
Guam Department of Public Health & Social Services
ISLAND-WIDE COMMUNICABLE DISEASE REPORT

REPORTS RECEIVED DURING THE WEEK ENDING 9/5/2015

<i>Acinetobacter baumannii</i> MDR	5
<i>Chlamydia trachomatis</i>	31
<i>Clostridium difficile</i>	3
Conjunctivitis	1
<i>E. coli</i> MDR	5
Gonorrhea	5
Hepatitis C	2
HIV	1
HPV	1
Influenza A	1
<i>Klebsiella pneumoniae</i> MDR	4
MRSA	18
Pertussis	1
Scabies	3
<i>Serratia marcescens</i> MDR	1
Streptococcal sore throat	5
Streptococcal disease, other	4
Tuberculosis	2
VRE	1

**GMHA-EMERGENCY DEPARTMENT CLINICAL DIAGNOSES OF INFLUENZA OR
FLU-SYNDROME BY WEEK AND PATIENT'S VILLAGE OF RESIDENCE, 2015**

(Villages listed geographically from northern-most to southern-most)

VILLAGE	WEEK										TOTAL	2015 RATE
	26	27	28	29	30	31	32	33	34	35		
Yigo	0	0	2	0	2	2	0	2	1	2	41	196.62
Dededo	2	1	4	0	0	3	2	3	2	6	94	206.02
Tamuning	2	1	0	0	1	0	1	2	1	0	31	155.12
Barrigada	0	0	0	0	0	0	0	0	0	0	11	122.09
Mangilao	0	1	0	0	0	0	0	0	0	3	26	168.59
Mongmong-T-M	0	0	0	1	0	0	1	0	1	0	22	317.51
Hagatña	1	0	1	0	0	0	0	0	0	1	8	749.77
Agaña Heights	0	0	0	0	0	0	0	0	0	0	0	0.00
Sinajana	0	1	0	0	0	0	0	0	0	0	5	190.04
Chalan Pago-Ordot	0	0	0	0	1	0	0	0	1	1	7	101.07
Asan-Maina	1	0	0	0	0	0	0	0	0	0	1	46.08
Piti	0	0	0	0	0	1	0	0	0	0	1	67.75
Santa Rita	0	0	0	0	0	0	0	0	1	0	8	129.51
Agat	0	0	0	0	2	0	1	1	1	0	16	320.51
Yona	1	1	1	0	1	0	0	1	1	4	14	212.80
Talofofo	0	0	0	0	0	0	0	0	0	0	4	129.20
Inarajan	1	0	0	0	0	0	0	0	0	2	10	433.28
Merizo	0	0	0	0	0	0	0	0	0	1	6	319.49
Umatac	0	0	0	0	1	0	0	0	0	0	2	251.89
Tourist	0	0	0	0	0	0	0	1	0	0	6	
Unknown	0	0	0	0	0	0	0	0	0	0	3	
TOTAL	8	5	8	1	8	6	5	10	9	20	319	197.18

NOTE: Rate = cases per 100,000 population for the year to date.

GMHA-ER INFLUENZA/ILI ACTIVITY LEVEL - REGIONAL (8 villages affected)

(ACTIVITY LEVELS: No activity, Sporadic, Local, Regional, Widespread)

GMHA-ER INFLUENZA/ILI ACTIVITY BY AGE

GENDER	Total	< 1	1 - 4	5 - 9	10-14	15-19	20-24	25-29	30-39	40-49	50-64	65+	UNK
MALE	15	7	7	0	1	0	0	0	0	0	0	0	0
FEMALE	5	0	4	0	0	0	0	0	0	1	0	0	0
TOTAL	20	7	11	0	1	0	0	0	0	1	0	0	0

GUAM ANIMAL DISEASE (ZONOSSES) REPORTS

Anaplasmosis – 1 canine, Ehrlichiosis – 2 canine