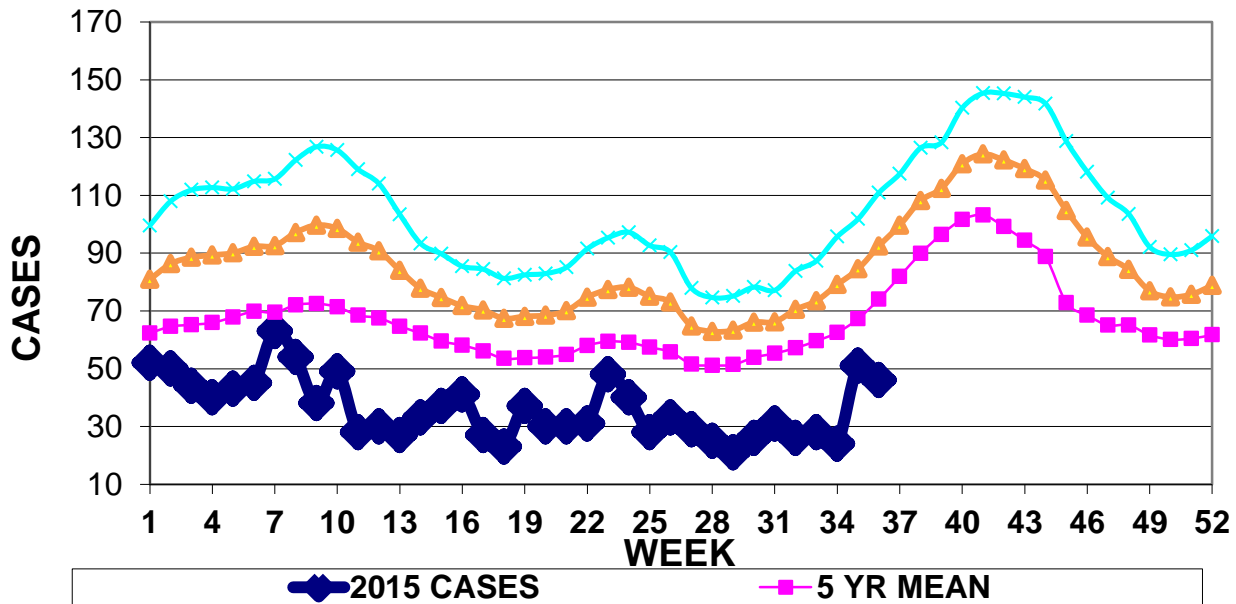


INFECTION CONTROL DEPARTMENT
 GUAM MEMORIAL HOSPITAL AUTHORITY
GUAM EPIDEMIOLOGY NEWSLETTER

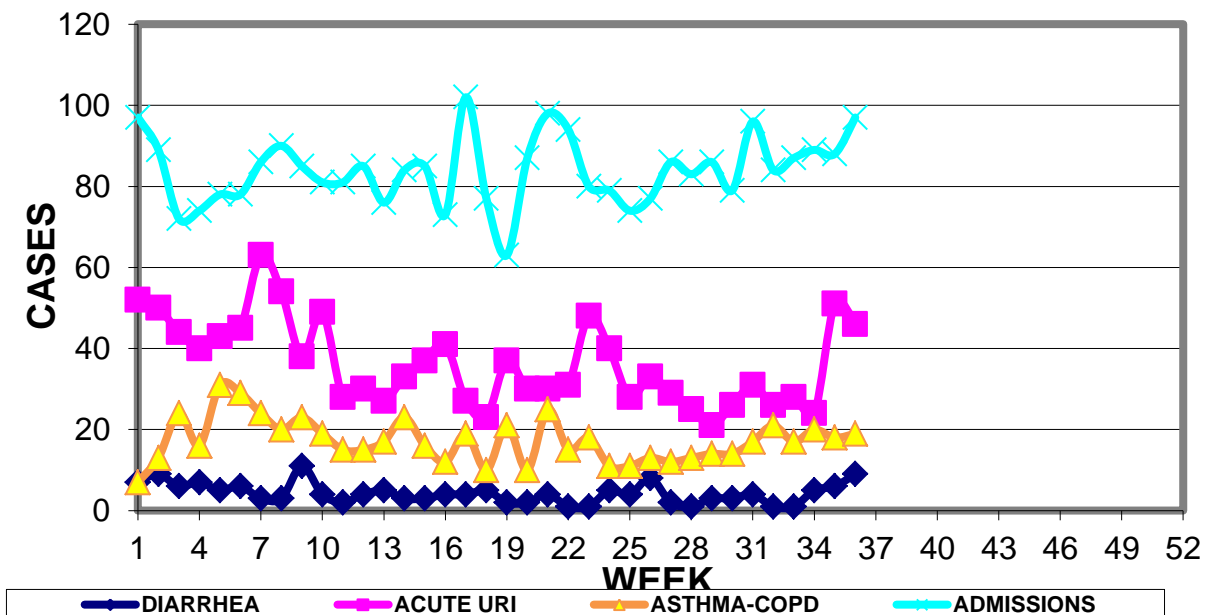
REPORT FOR WEEK ENDING: 9/12/2015 (Reporting week 2015-36)

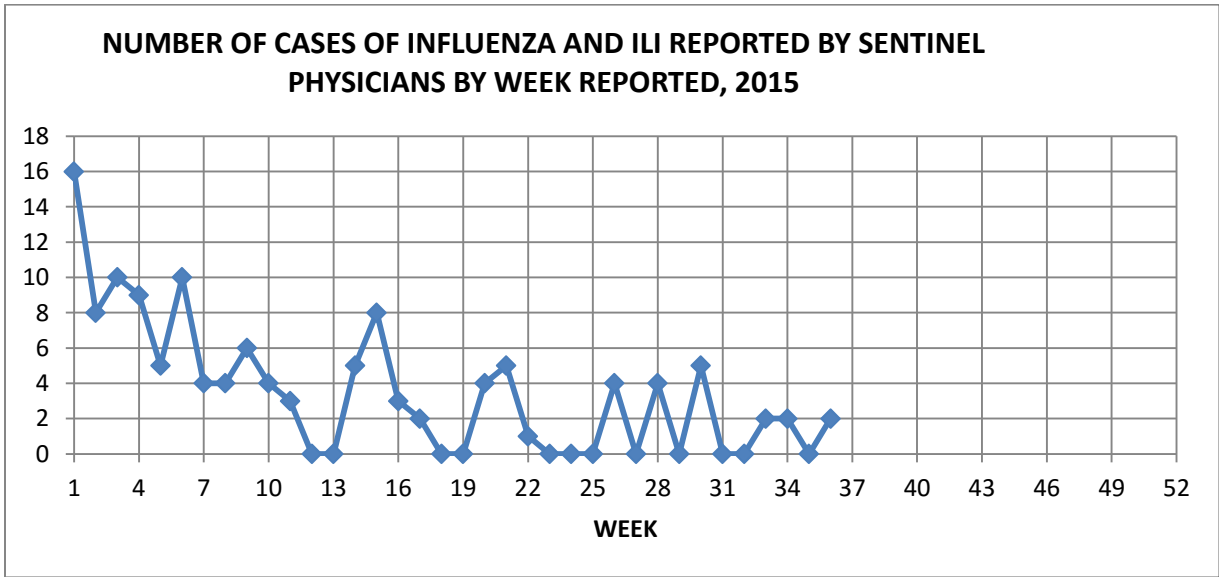
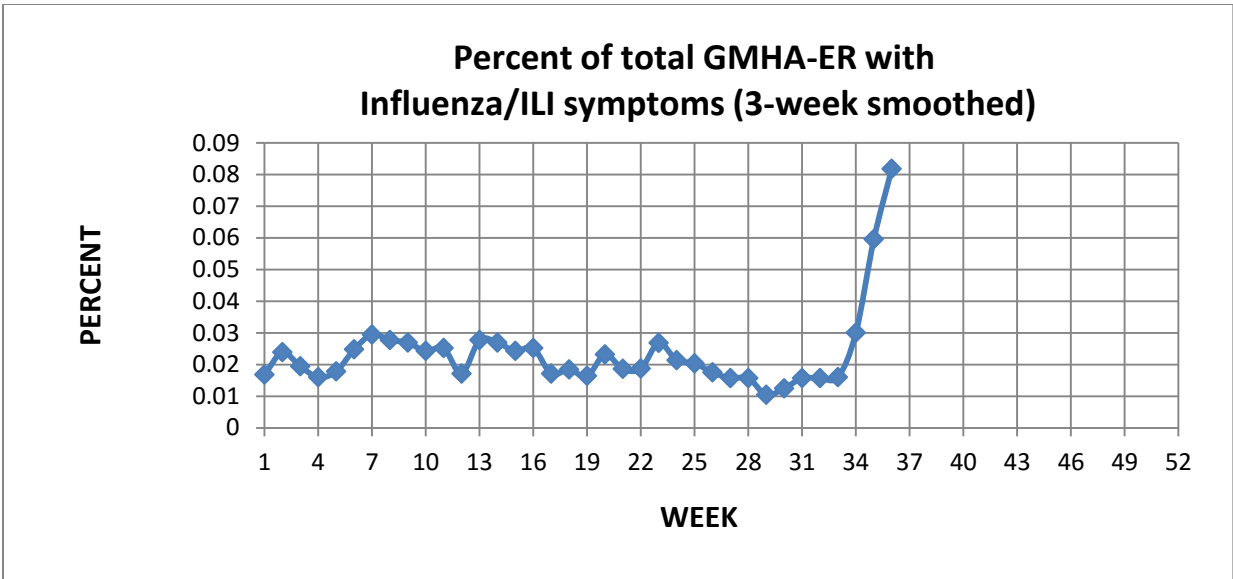
GUAM REPORTS

**GUAM ACUTE RESPIRATORY INFECTION SURVEILLANCE 2015;
 GMHA-EMERGENCY DEPARTMENT PATIENTS BY WEEK SEEN**



**GUAM SYNDROMIC DISEASE SURVEILLANCE
 GMHA-ED PATIENT DIAGNOSES BY WEEK, 2015**





GUAM SENTINEL PHYSICIAN INFLUENZA SURVEILLANCE

REPORTS OF INFLUENZA OR INFLUENZA-LIKE ILLNESSES
RECEIVED FOR THE WEEK ENDING 9/12/15

Two cases reported by sentinel physicians

Bureau of Communicable Disease Control
Guam Department of Public Health & Social Services
H1N1 INFLUENZA SURVEILLANCE, WEEK 36
NO CASES OF H1N1 REPORTED FOR WEEK 36
Cumulative 2015: 0 civilian & 0 military cases

INFECTION CONTROL DEPARTMENT
 GUAM MEMORIAL HOSPITAL AUTHORITY
**HOSPITALIZATIONS FOR INFLUENZA A BY AGE
 AND MORBIDITY REPORTING WEEK, 2015**

AGE	24	25	26	27	28	29	30	31	32	33	34	35	36	TOTAL
0-4												1	1	2
5-18														1
19-24														
25-49														
50-64														
65+														1
TOTAL	0	0	0	0	0	0	0	0	0	0	0	1	1	4

Bureau of Communicable Disease Control
Guam Department of Public Health & Social Services
ISLAND-WIDE COMMUNICABLE DISEASE REPORT

REPORTS RECEIVED DURING THE WEEK ENDING 9/12/2015

<i>Acinetobacter baumannii</i> MDR	5
Carbapenem-resis. <i>Enterobacteriaceae</i> (CRE)	1
<i>Chlamydia trachomatis</i>	36
Conjunctivitis	4
<i>E. coli</i> MDR	1
Gonorrhea	5
Hepatitis B	2
HSV 2	1
Influenza A	4
<i>Klebsiella pneumoniae</i> MDR	1
Meningitis, Group B Streptococcal	1
MRSA	44
Salmonellosis	2
Shigellosis	1
Scabies	7
Streptococcal sore throat	24
Streptococcal disease, other	2

**GMHA-EMERGENCY DEPARTMENT CLINICAL DIAGNOSES OF INFLUENZA OR
FLU-SYNDROME BY WEEK AND PATIENT'S VILLAGE OF RESIDENCE, 2015**

(Villages listed geographically from northern-most to southern-most)

WEEK

VILLAGE	27	28	29	30	31	32	33	34	35	36	TOTAL	2015 RATE
Yigo	0	2	0	2	2	0	2	1	2	7	48	230.19
Dededo	1	4	0	0	3	2	3	2	6	3	97	212.59
Tamuning	1	0	0	1	0	1	2	1	0	3	34	170.13
Barrigada	0	0	0	0	0	0	0	0	0	1	12	133.19
Mangilao	1	0	0	0	0	0	0	0	3	1	27	175.07
Mongmong-T-M	0	0	1	0	0	1	0	1	0	1	23	331.94
Hagatña	0	1	0	0	0	0	0	0	1	0	8	749.77
Agaña Heights	0	0	0	0	0	0	0	0	0	1	1	25.87
Sinajana	1	0	0	0	0	0	0	0	0	0	5	190.04
Chalan Pago-Ordot	0	0	0	1	0	0	0	1	1	0	7	101.07
Asan-Maina	0	0	0	0	0	0	0	0	0	0	1	46.08
Piti	0	0	0	0	1	0	0	0	0	0	1	67.75
Santa Rita	0	0	0	0	0	0	0	1	0	0	8	129.51
Agat	0	0	0	2	0	1	1	1	0	0	16	320.51
Yona	1	1	0	1	0	0	1	1	4	0	14	212.80
Talofofo	0	0	0	0	0	0	0	0	0	0	4	129.20
Inarajan	0	0	0	0	0	0	0	0	2	0	10	433.28
Merizo	0	0	0	0	0	0	0	0	1	0	6	319.49
Umatac	0	0	0	1	0	0	0	0	0	0	2	251.89
Tourist	0	0	0	0	0	0	1	0	0	0	6	
Unknown	0	0	0	0	0	0	0	0	0	0	3	
TOTAL	5	8	1	8	6	5	10	9	20	17	319	197.18

NOTE: Rate = cases per 100,000 population for the year to date.

GMHA-ER INFLUENZA/ILI ACTIVITY LEVEL - REGIONAL (7 villages affected)

(ACTIVITY LEVELS: No activity, Sporadic, Local, Regional, Widespread)

GMHA-ER INFLUENZA/ILI ACTIVITY BY AGE – WEEK 36

GENDER	Total	< 1	1 - 4	5 - 9	10-14	15-19	20-24	25-29	30-39	40-49	50-64	65+	UNK
MALE	11	3	5	0	0	0	1	0	0	0	2	0	0
FEMALE	6	1	4	0	1	0	0	0	0	0	0	0	0
TOTAL	17	4	9	0	1	0	1	0	0	0	2	0	0

GUAM ANIMAL DISEASE (ZONOSSES) REPORTS

Anaplasmosis – 2 canine, Babesiosis – 3 canine