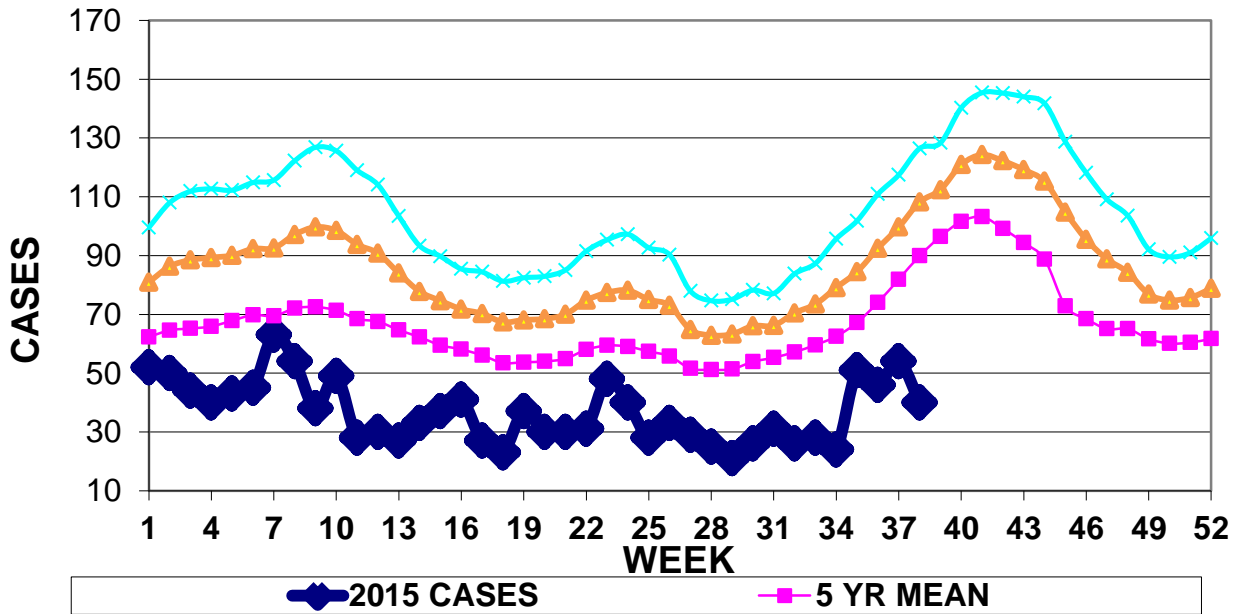


INFECTION CONTROL DEPARTMENT
 GUAM MEMORIAL HOSPITAL AUTHORITY
GUAM EPIDEMIOLOGY NEWSLETTER

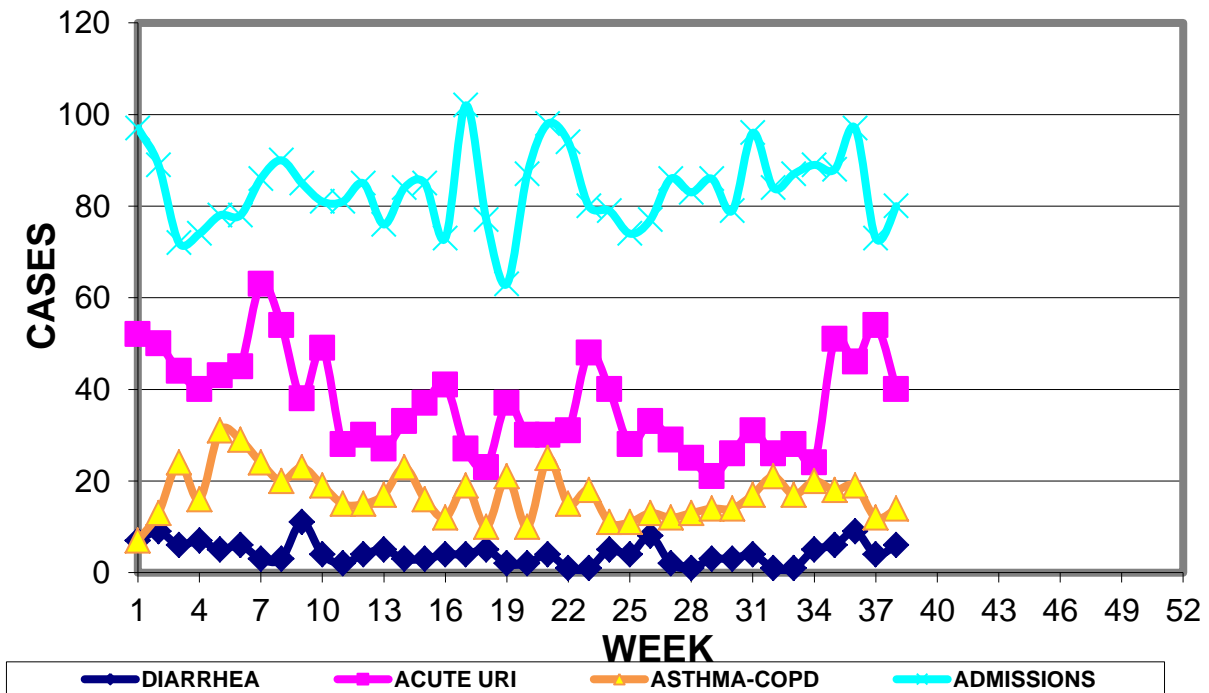
REPORT FOR WEEK ENDING: 9/26/2015 (Reporting week 2015-38)

GUAM REPORTS

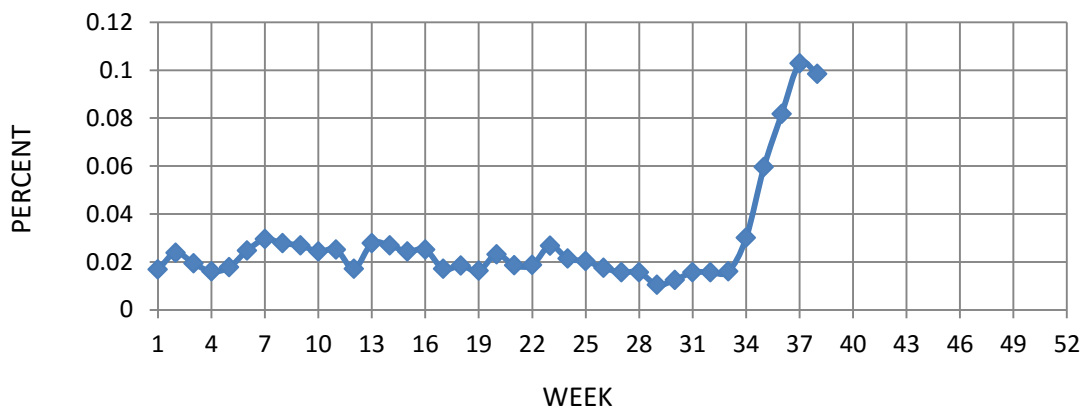
**GUAM ACUTE RESPIRATORY INFECTION SURVEILLANCE 2015;
 GMHA-EMERGENCY DEPARTMENT PATIENTS BY WEEK SEEN**



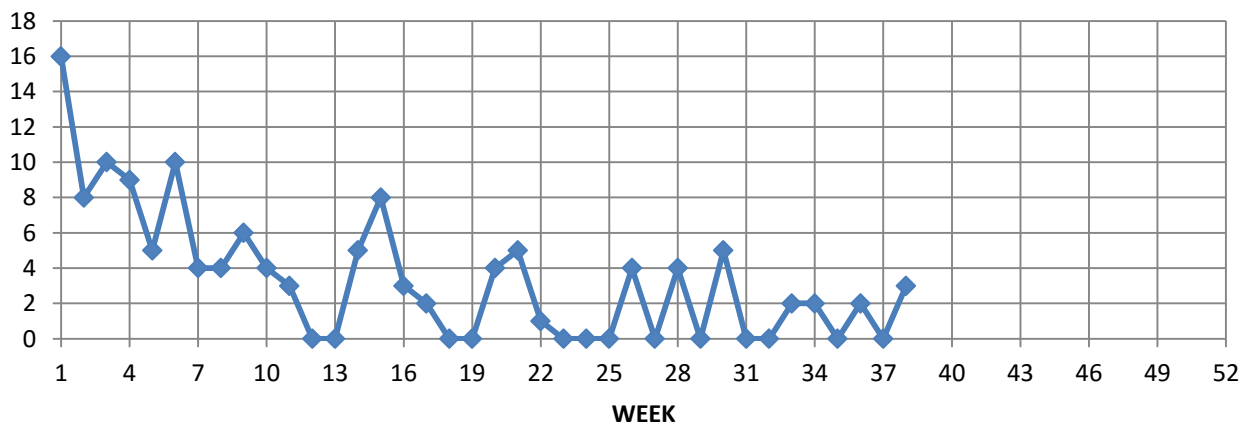
**GUAM SYNDROMIC DISEASE SURVEILLANCE
 GMHA-ED PATIENT DIAGNOSES BY WEEK, 2015**



Percent of total GMHA-ER patients with Influenza/ILI symptoms (3-week smoothed)



NUMBER OF CASES OF INFLUENZA AND ILI REPORTED BY SENTINEL PHYSICIANS BY WEEK REPORTED, 2015



GUAM SENTINEL PHYSICIAN INFLUENZA SURVEILLANCE

REPORTS OF INFLUENZA OR INFLUENZA-LIKE ILLNESSES
RECEIVED FOR THE WEEK ENDING 9/26/15

Three cases reported by sentinel physicians

Bureau of Communicable Disease Control
Guam Department of Public Health & Social Services
H1N1 INFLUENZA SURVEILLANCE, WEEK 38
NO CASES OF H1N1 REPORTED FOR WEEK 38
Cumulative 2015: 0 civilian & 0 military cases

INFECTION CONTROL DEPARTMENT
 GUAM MEMORIAL HOSPITAL AUTHORITY
**HOSPITALIZATIONS FOR INFLUENZA A BY AGE
 AND MORBIDITY REPORTING WEEK, 2015**

AGE	26	27	28	29	30	31	32	33	34	35	36	37	38	TOTAL
0-4										1	1	1		3
5-18														1
19-24														
25-49												1		1
50-64														
65+														1
TOTAL	0	0	0	0	0	0	0	0	0	1	1	2	0	6

Bureau of Communicable Disease Control
Guam Department of Public Health & Social Services
ISLAND-WIDE COMMUNICABLE DISEASE REPORT

REPORTS RECEIVED DURING THE WEEK ENDING 9/26/2015

<i>Acinetobacter baumannii</i> MDR	2
<i>Chlamydia trachomatis</i>	20
Conjunctivitis	18
<i>Clostridium difficile</i>	3
<i>E. coli</i> MDR	2
Gonorrhea	2
Hepatitis C	1
HSV 1	1
HSV 2	3
HPV	3
<i>Klebsiella pneumoniae</i> MDR	1
<i>Morganella morganii</i> meningitis	1
MRSA	7
Scabies	1
Shigellosis	1
Streptococcal sore throat	2
Streptococcal disease, other	2
Tuberculosis	4

Errata: Delete 2 cases of Pertussis reported for week 37

INFECTION CONTROL DEPARTMENT
GUAM MEMORIAL HOSPITAL AUTHORITY

**GMHA-EMERGENCY DEPARTMENT CLINICAL DIAGNOSES OF INFLUENZA OR
FLU-SYNDROME BY WEEK AND PATIENT'S VILLAGE OF RESIDENCE, 2015**

(Villages listed geographically from northern-most to southern-most)

VILLAGE	WEEK										TOTAL	2015 RATE
	29	30	31	32	33	34	35	36	37	38		
Yigo	0	2	2	0	2	1	2	7	1		49	234.99
Dededo	0	0	3	2	3	2	6	3	11	8	116	254.24
Tamuning	0	1	0	1	2	1	0	3	0	2	36	180.14
Barrigada	0	0	0	0	0	0	0	1	1	1	14	155.38
Mangilao	0	0	0	0	0	0	3	1	3	1	31	201.01
Mongmong-T-M	1	0	0	1	0	1	0	1	0	1	24	346.37
Hagatña	0	0	0	0	0	0	1	0	0		8	749.77
Agaña Heights	0	0	0	0	0	0	0	1	1		2	51.73
Sinajana	0	0	0	0	0	0	0	0	0		5	190.04
Chalan Pago-Ordot	0	1	0	0	0	1	1	0	2	1	10	144.38
Asan-Maina	0	0	0	0	0	0	0	0	0		1	46.08
Piti	0	0	1	0	0	0	0	0	0		1	67.75
Santa Rita	0	0	0	0	0	1	0	0	1		9	145.70
Agat	0	2	0	1	1	1	0	0	0		16	320.51
Yona	0	1	0	0	1	1	4	0	0	1	15	228.00
Talofofo	0	0	0	0	0	0	0	0	0		4	129.20
Inarajan	0	0	0	0	0	0	2	0	0	2	12	519.93
Merizo	0	0	0	0	0	0	1	0	0	1	7	372.74
Umatac	0	1	0	0	0	0	0	0	0		2	251.89
Tourist	0	0	0	0	1	0	0	0	0		6	
Unknown	0	0	0	0	0	0	0	0	0		3	
TOTAL	1	8	6	5	10	9	20	17	20	18	374	231.17

NOTE: Rate = cases per 100,000 population for the year to date.

GMHA-ER INFLUENZA/ILI ACTIVITY LEVEL - REGIONAL (9 villages affected)

(ACTIVITY LEVELS: No activity, Sporadic, Local, Regional, Widespread)

GMHA-ER INFLUENZA/ILI ACTIVITY BY AGE – WEEK 37

GENDER	Total	< 1	1 - 4	5 - 9	10-14	15-19	20-24	25-29	30-39	40-49	50-64	65+	UNK
MALE	14	2	7	2	0	0	0	0	0	0	1	2	0
FEMALE	6	2	0	2	0	0	0	0	1	0	1	0	0
TOTAL	20	4	7	4	0	0	0	0	1	0	2	2	0

GUAM ANIMAL DISEASE (ZONOSSES) REPORTS

Babesiosis – 1 canine