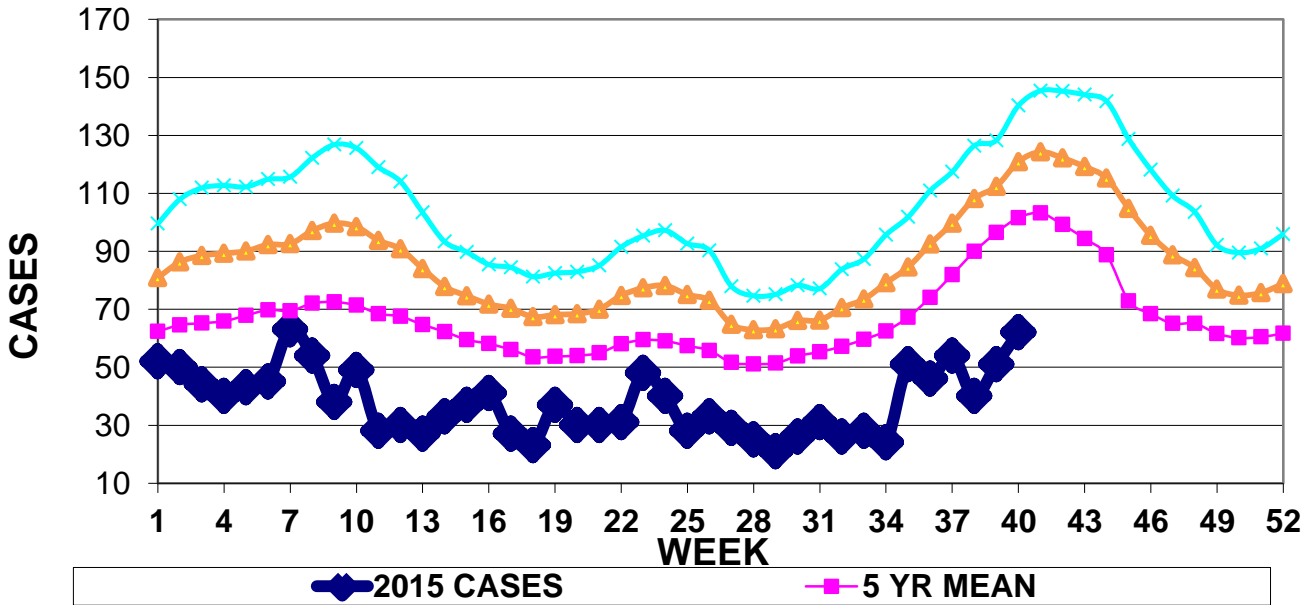


INFECTION CONTROL DEPARTMENT
 GUAM MEMORIAL HOSPITAL AUTHORITY
GUAM EPIDEMIOLOGY NEWSLETTER

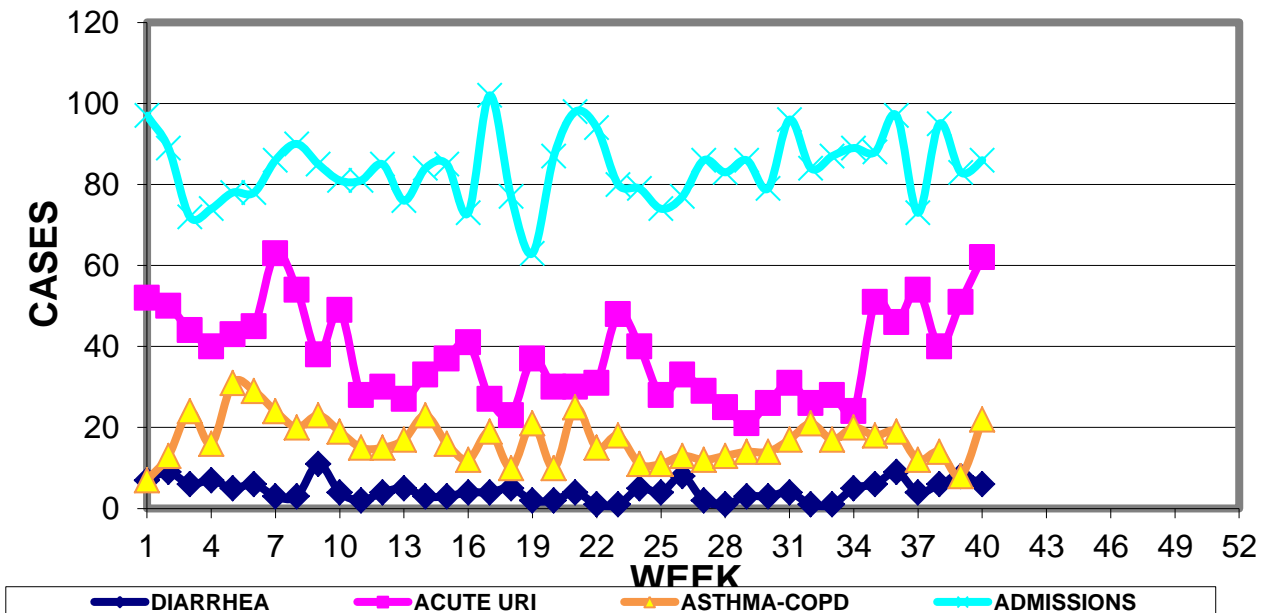
REPORT FOR WEEK ENDING: 10/10/2015 (Reporting week 2015-40)

GUAM REPORTS

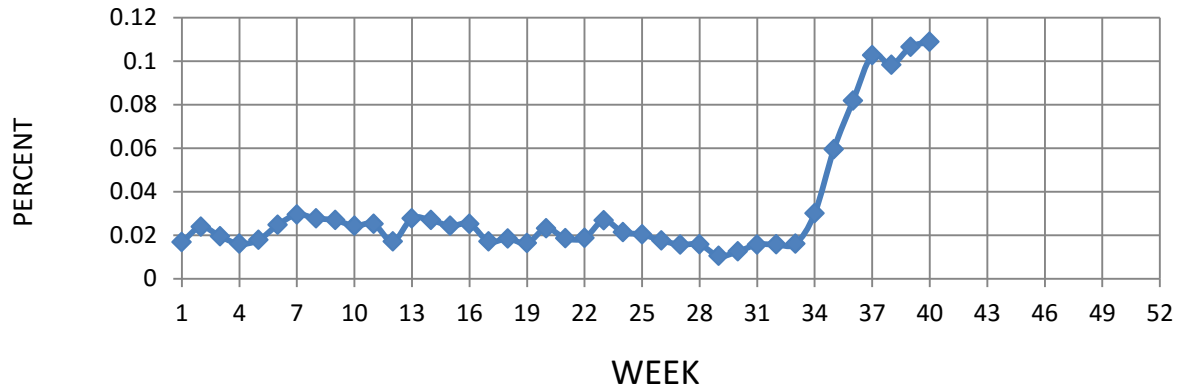
**GUAM ACUTE RESPIRATORY INFECTION SURVEILLANCE 2015;
 GMHA-EMERGENCY DEPARTMENT PATIENTS BY WEEK SEEN**



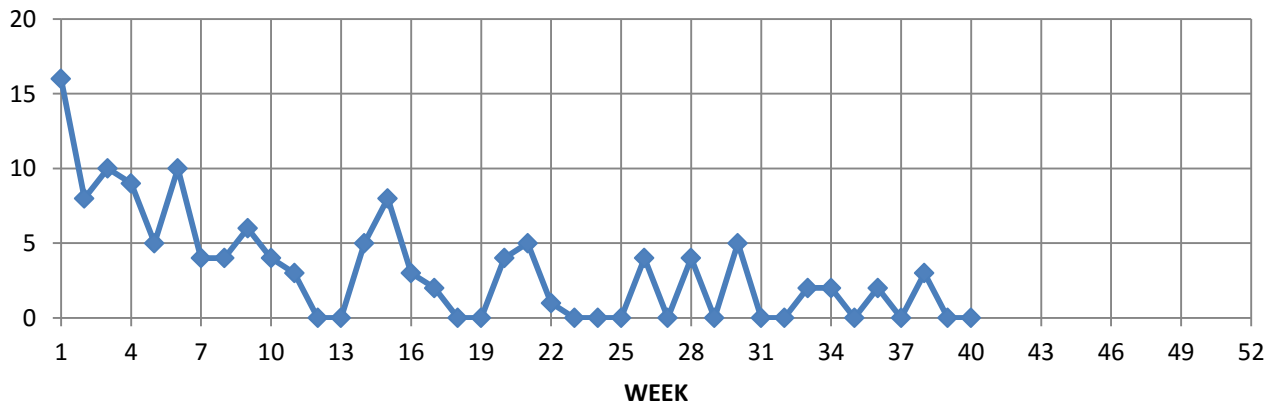
**GUAM SYNDROMIC DISEASE SURVEILLANCE
 GMHA-ED PATIENT DIAGNOSES BY WEEK, 2015**



**Percent of total GMHA-ER patients with
Influenza/ILI symptoms (3-week smoothed)**



**NUMBER OF CASES OF INFLUENZA AND ILI REPORTED BY SENTINEL
PHYSICIANS BY WEEK REPORTED, 2015**



GUAM SENTINEL PHYSICIAN INFLUENZA SURVEILLANCE

REPORTS OF INFLUENZA OR INFLUENZA-LIKE ILLNESSES
RECEIVED FOR THE WEEK ENDING 10/10/15

No cases reported by sentinel physicians

Bureau of Communicable Disease Control

Guam Department of Public Health & Social Services

H1N1 INFLUENZA SURVEILLANCE, WEEK 40

NO CASES OF H1N1 REPORTED FOR WEEK 40

Cumulative 2015: 0 civilian & 0 military cases

INFECTION CONTROL DEPARTMENT
 GUAM MEMORIAL HOSPITAL AUTHORITY
**HOSPITALIZATIONS FOR INFLUENZA A BY AGE
 AND MORBIDITY REPORTING WEEK, 2015**

AGE	28	29	30	31	32	33	34	35	36	37	38	39	40	TOTAL
0-4								1	1	1				3
5-18														1
19-24														
25-49										1				1
50-64														
65+														1
TOTAL	0	0	0	0	0	0	0	1	1	2	0	0	0	6

Bureau of Communicable Disease Control
Guam Department of Public Health & Social Services
ISLAND-WIDE COMMUNICABLE DISEASE REPORT

REPORTS RECEIVED DURING THE WEEK ENDING 10/10/2015

<i>Chlamydia trachomatis</i>	17
<i>Clostridium difficile</i>	2
Conjunctivitis	5
Gonorrhea	1
Hepatitis B	1
<i>Klebsiella pneumoniae</i> MDR	1
MRSA	11
Pertussis	1
Scabies	4
<i>Salmonella</i>	1
Syphilis, Late latent	2
Streptococcal disease, Other than SST	3

INFECTION CONTROL DEPARTMENT
GUAM MEMORIAL HOSPITAL AUTHORITY

**GMHA-EMERGENCY DEPARTMENT CLINICAL DIAGNOSES OF INFLUENZA OR
FLU-SYNDROME BY WEEK AND PATIENT'S VILLAGE OF RESIDENCE, 2015**

(Villages listed geographically from northern-most to southern-most)

VILLAGE	WEEK										TOTAL	2015 RATE
	31	32	33	34	35	36	37	38	39	40		
Yigo	2	0	2	1	2	7	1	0	0	1	50	239.78
Dededo	3	2	3	2	6	3	11	8	4	4	124	271.77
Tamuning	0	1	2	1	0	3	0	2	1	4	41	205.15
Barrigada	0	0	0	0	0	1	1	1	1	1	16	177.58
Mangilao	0	0	0	0	3	1	3	1	0	1	32	207.50
Mongmong-T-M	0	1	0	1	0	1	0	1	0	0	24	346.37
Hagatña	0	0	0	0	1	0	0	0	1	0	9	843.49
Agaña Heights	0	0	0	0	0	1	1	0	0	0	2	51.73
Sinajana	0	0	0	0	0	0	0	0	1	1	7	266.06
Chalan Pago-Ordot	0	0	0	1	1	0	2	1	0	1	11	158.82
Asan-Maina	0	0	0	0	0	0	0	0	1	0	2	92.17
Piti	1	0	0	0	0	0	0	0	0	0	1	67.75
Santa Rita	0	0	0	1	0	0	1	0	0	0	9	145.70
Agat	0	1	1	1	0	0	0	0	0	0	16	320.51
Yona	0	0	1	1	4	0	0	1	1	1	17	258.40
Talofof	0	0	0	0	0	0	0	0	0	1	5	161.50
Inarajan	0	0	0	0	2	0	0	2	2	1	15	649.91
Merizo	0	0	0	0	1	0	0	1	1	1	9	479.23
Umatac	0	0	0	0	0	0	0	0	0	0	2	251.89
Tourist	0	0	1	0	0	0	0	0	0	0	6	
Unknown	0	0	0	0	0	0	0	0	0	0	3	
TOTAL	6	5	10	9	20	17	20	18	13	17	404	249.71

NOTE: Rate = cases per 100,000 population for the year to date.

GMHA-ER INFLUENZA/ILI ACTIVITY LEVEL - WIDESPREAD (11 villages affected)

(ACTIVITY LEVELS: No activity, Sporadic, Local, Regional, Widespread)

GMHA-ER INFLUENZA/ILI ACTIVITY BY AGE – WEEK 40

GENDER	Total	< 1	1 - 4	5 - 9	10-14	15-19	20-24	25-29	30-39	40-49	50-64	65+	UNK
MALE	6	0	5	0	1	0	1	0	0	0	0	0	0
FEMALE	11	6	2	0	0	0	0	1	0	0	0	1	0
TOTAL	17	6	7	0	1	0	1	1	0	0	0	1	0

GUAM ANIMAL DISEASE (ZONOSSES) REPORTS

Ehrlichiosis – 1 canine, Babesiosis – 1 canine