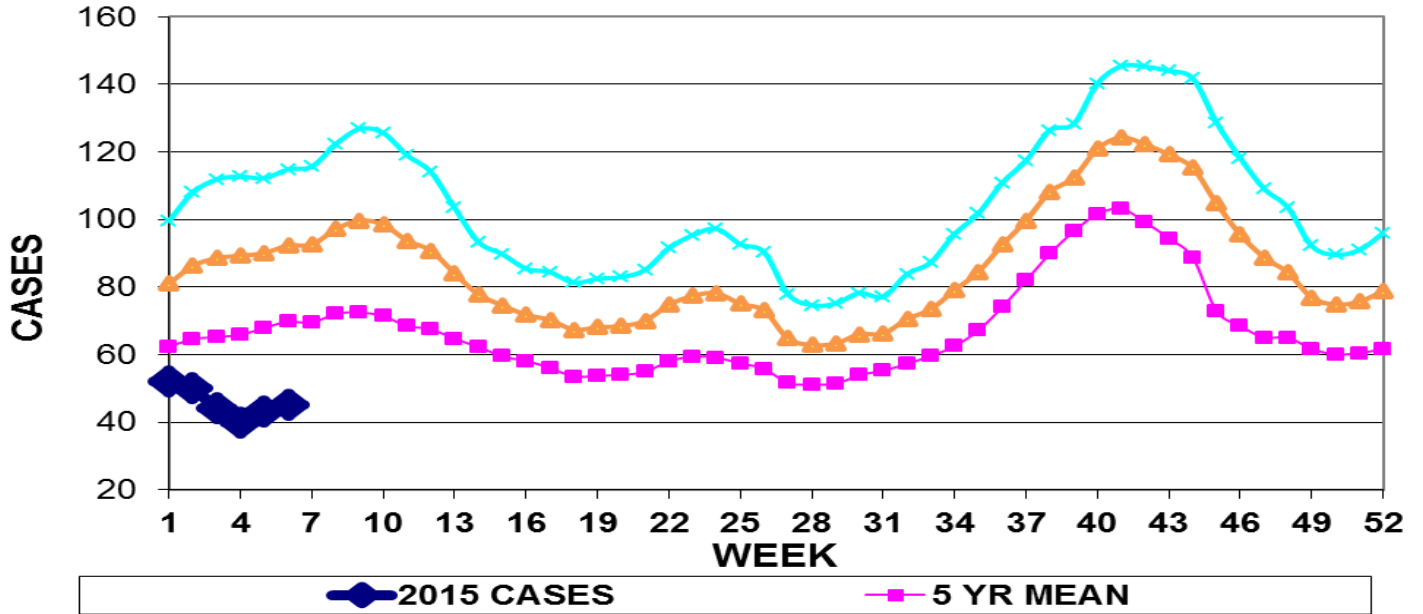


INFECTION CONTROL DEPARTMENT  
 GUAM MEMORIAL HOSPITAL AUTHORITY  
**GUAM EPIDEMIOLOGY NEWSLETTER**

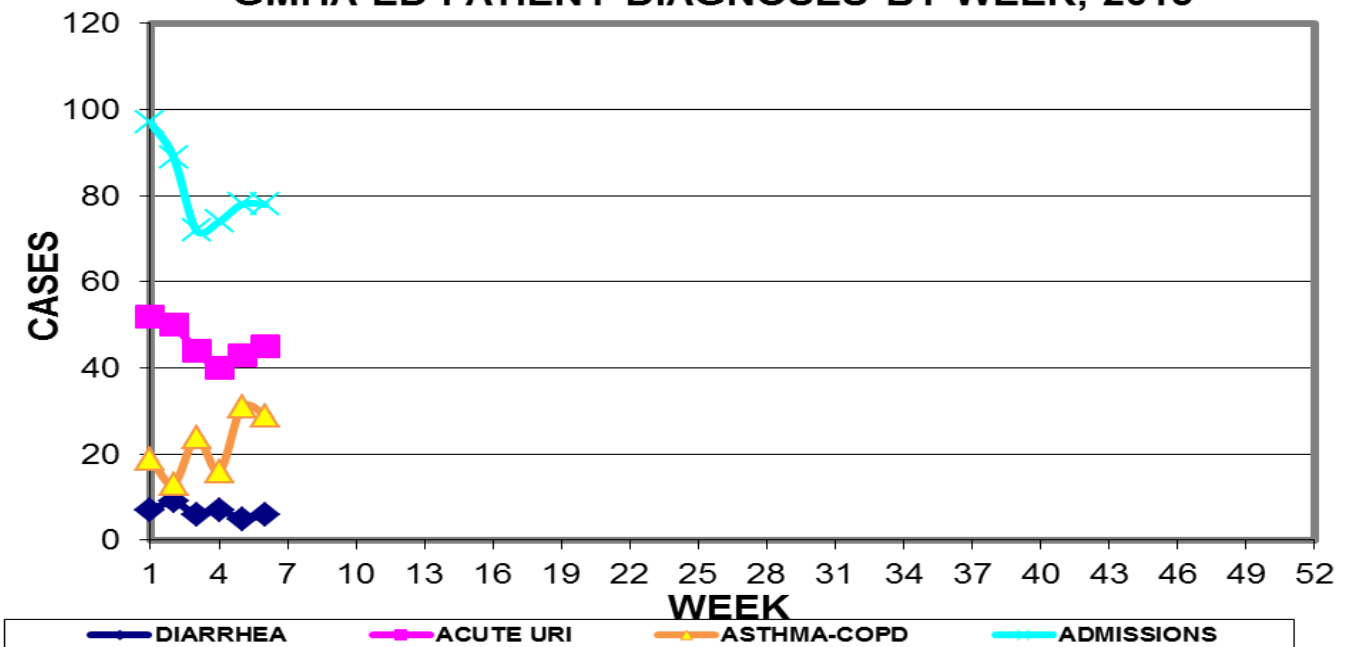
REPORT FOR WEEK ENDING: 2/14/2015 (Reporting week 2015-6)

**GUAM REPORTS**

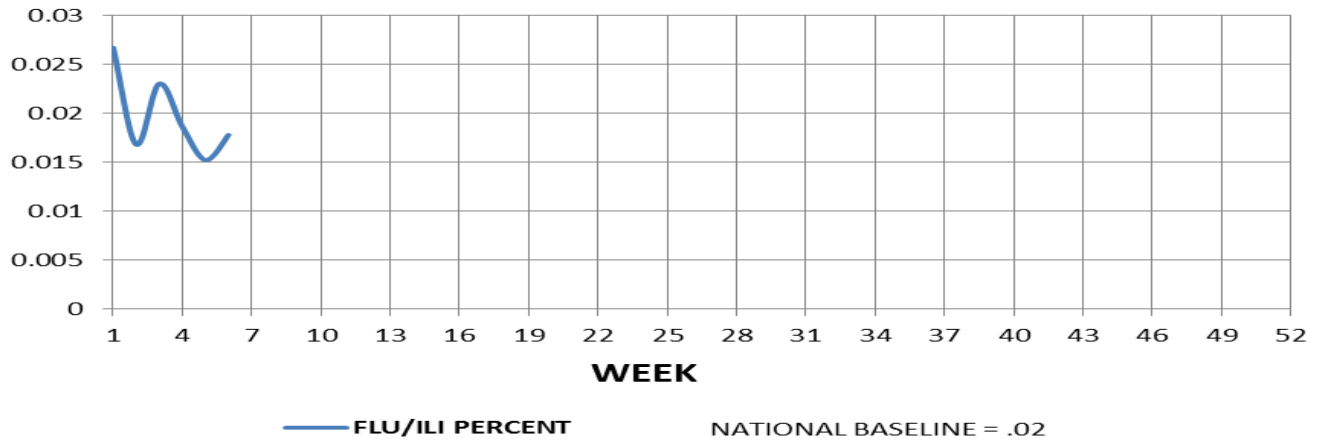
**GUAM ACUTE RESPIRATORY INFECTION SURVEILLANCE 2015;  
 GMHA-EMERGENCY DEPARTMENT PATIENTS BY WEEK SEEN**



**GUAM SYNDROMIC DISEASE SURVEILLANCE  
 GMHA-ED PATIENT DIAGNOSES BY WEEK, 2015**



**FLU/ILI AS A PERCENT OF TOTAL PATIENTS SEEN, GMHA-ED, 2015  
(3-WEEK SMOOTHED)**

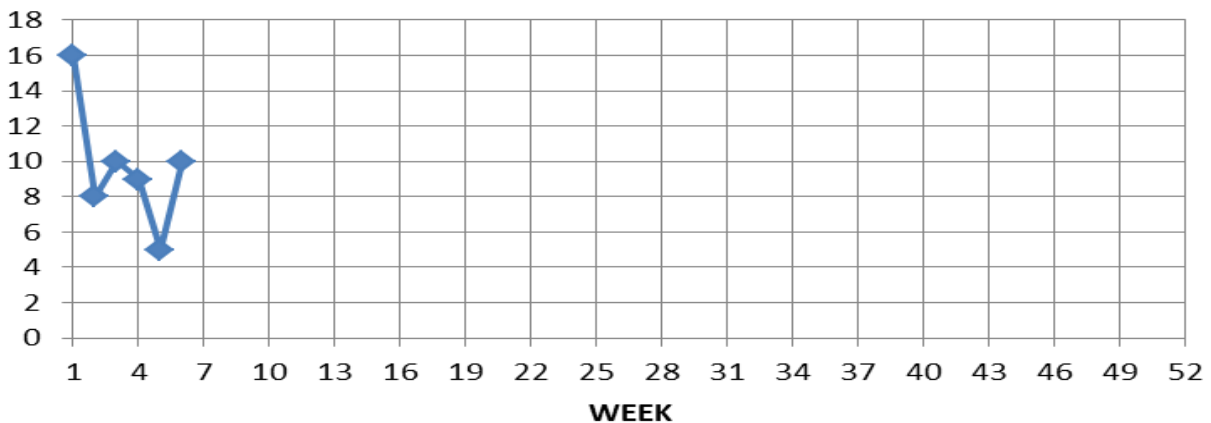


**GUAM SENTINEL PHYSICIAN INFLUENZA SURVEILLANCE**

REPORTS OF INFLUENZA OR INFLUENZA-LIKE ILLNESSES  
RECEIVED FOR THE WEEK ENDING 2.14.15

Ten cases reported by sentinel physicians

**NUMBER OF CASES OF INFLUENZA AND ILI REPORTED BY  
SENTINEL PHYSICIANS BY WEEK REPORTED, 2015**



Bureau of Communicable Disease Control  
Guam Department of Public Health & Social Services  
**H1N1 INFLUENZA SURVEILLANCE, WEEK 6**  
NO CASES OF H1N1 REPORTED FOR WEEK 6  
**Cumulative 2015: 0 civilian & 0 military cases**

INFECTION CONTROL DEPARTMENT  
 GUAM MEMORIAL HOSPITAL AUTHORITY  
**HOSPITALIZATIONS FOR INFLUENZA A BY AGE  
 AND MORBIDITY REPORTING WEEK, 2015**

<b>AGE</b>	<b>1</b>	<b>2</b>	<b>3</b>	<b>4</b>	<b>5</b>	<b>6</b>	<b>7</b>	<b>8</b>	<b>9</b>	<b>10</b>	<b>TOTAL</b>
0-4											
5-18											
19-24											
25-49											
50-64											
65+											
<b>TOTAL</b>	<b>0</b>	<b>0</b>	<b>0</b>	<b>0</b>	<b>0</b>	<b>0</b>					

Bureau of Communicable Disease Control  
**Guam Department of Public Health & Social Services**  
**ISLAND-WIDE COMMUNICABLE DISEASE REPORT**

REPORTS RECEIVED FOR THE WEEK ENDING 2/14/2015

AIDS	1
<i>Chlamydia trachomatis</i>	11
Conjunctivitis	9
Hepatitis B	1
Hepatitis C	3
MRSA	1
Rheumatic fever	1
Scabies	18
Scarlet fever	1
Streptococcal sore throat	1
Tuberculosis	4

□

INFECTION CONTROL DEPARTMENT  
 GUAM MEMORIAL HOSPITAL AUTHORITY  
**GMHA-EMERGENCY DEPARTMENT CLINICAL DIAGNOSES OF INFLUENZA OR  
 FLU-SYNDROME BY WEEK AND PATIENT'S VILLAGE OF RESIDENCE, 2015**  
 (Villages listed geographically from northern-most to southern-most)

VILLAGE	WEEK										TOTAL	2015 RATE
	1	2	3	4	5	6	7	8	9	10		
Yigo	1	1	4	1	4	2					13	62.34
Dededo	3	1	0	0	1	4					9	19.73
Tamuning	2	1	1	1	0	0					5	25.02
Barrigada	0	1	1	0	0	1					3	33.30
Mangilao	0	1	0	2	0	1					4	25.94
Mongmong-T-M	2	0	2	0	0	1					5	72.16
Hagatña	0	0	0	0	0	0					0	0.00
Agaña Heights	0	0	0	0	0	0					0	0.00
Sinajana	0	0	0	0	0	0					0	0.00
Chalan Pago-Ordot	1	0	0	0	0	0					1	14.44
Asan-Maina	0	0	0	0	0	0					0	0.00
Piti	0	0	0	0	0	0					0	0.00
Santa Rita	1	2	0	0	0	0					3	48.57
Agat	1	1	0	1	0	1					4	80.13
Yona	1	1	0	0	0	0					2	30.40
Talofofo	0	0	0	0	0	0					0	0.00
Inarajan	1	0	0	0	0	0					1	43.33
Merizo	0	2	0	1	1	1					5	266.24
Umatac	0	0	0	0	0	0					0	0.00
Tourist	2	0	0	0	0	1					3	
Unknown	0	0	0	0	0	0					0	
<b>TOTAL</b>	<b>15</b>	<b>11</b>	<b>8</b>	<b>6</b>	<b>6</b>	<b>12</b>					<b>58</b>	<b>35.85</b>

NOTE: Rate = cases per 100,000 population for the specified period.

INFLUENZA/ILI ACTIVITY LEVEL - Regional (5-9 villages affected)  
 (ACTIVITY LEVELS: No activity, Sporadic, Local, Regional, Widespread)

**GUAM ANIMAL DISEASE (ZONOSSES) REPORTS**  
 REPORTS RECEIVED FOR THE WEEK ENDING 2/14/2015

Babesiosis – 1 canine