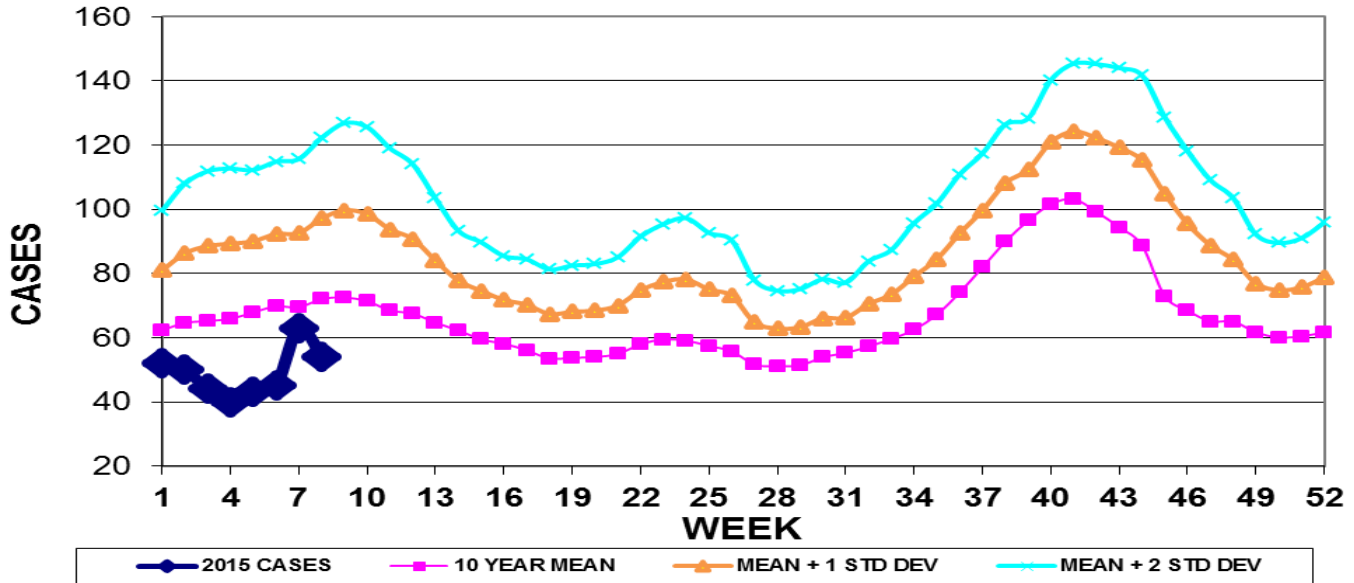


INFECTION CONTROL DEPARTMENT
 GUAM MEMORIAL HOSPITAL AUTHORITY
GUAM EPIDEMIOLOGY NEWSLETTER

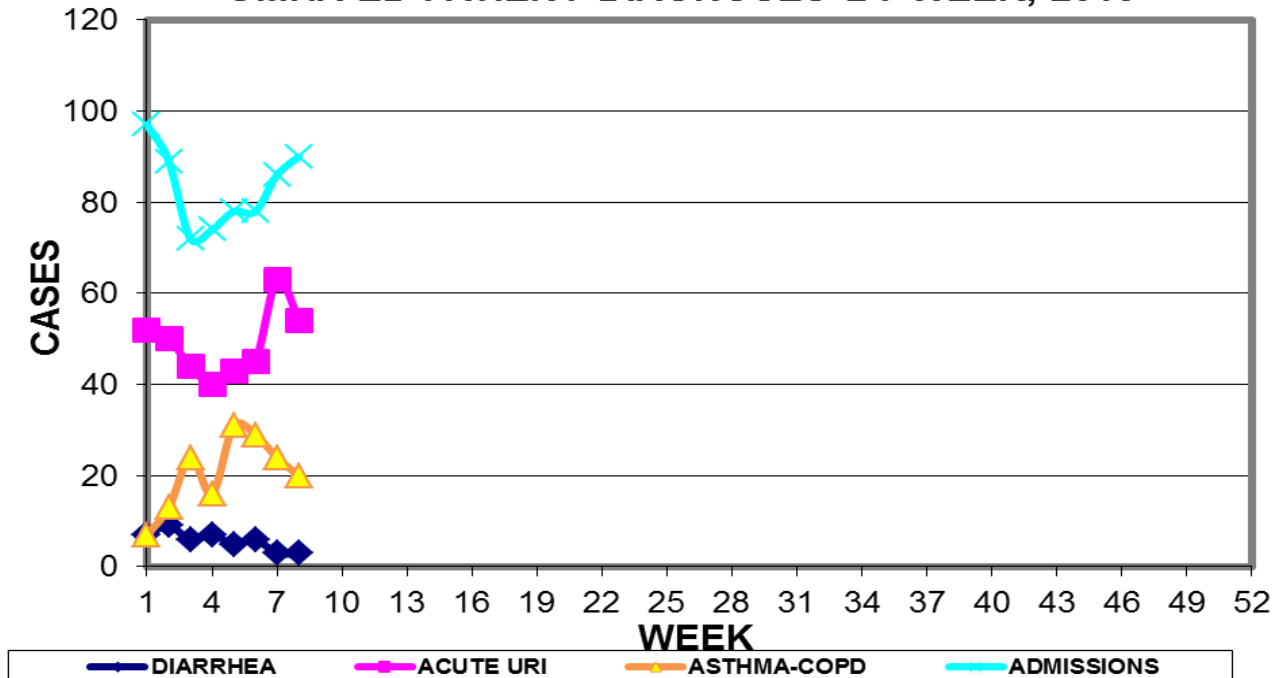
REPORT FOR WEEK ENDING: 2/28/2015 (Reporting week 2015-8)

GUAM REPORTS

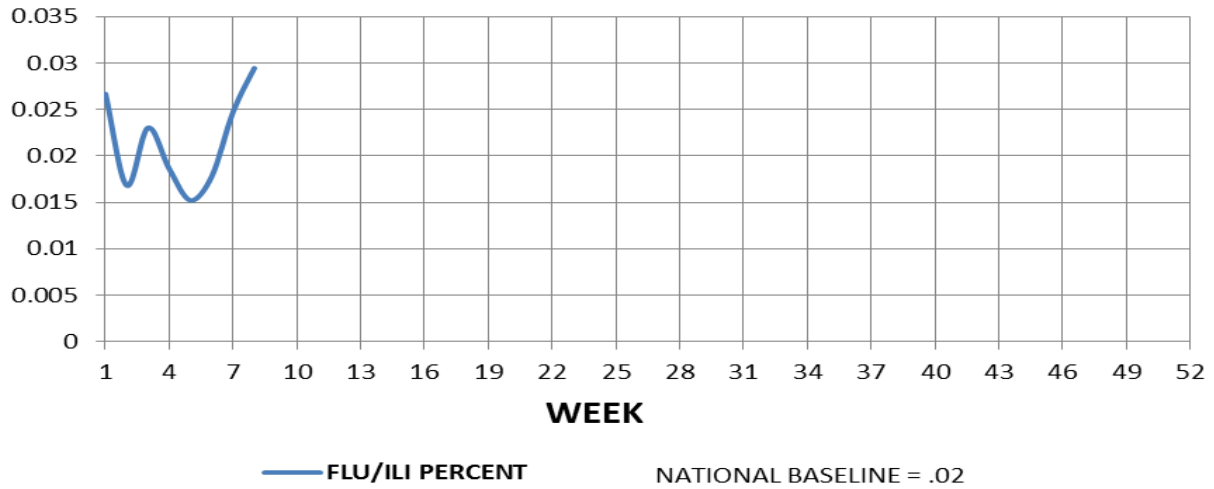
**GUAM ACUTE RESPIRATORY INFECTION SURVEILLANCE 2015;
 GMHA-EMERGENCY DEPARTMENT PATIENTS BY WEEK SEEN**



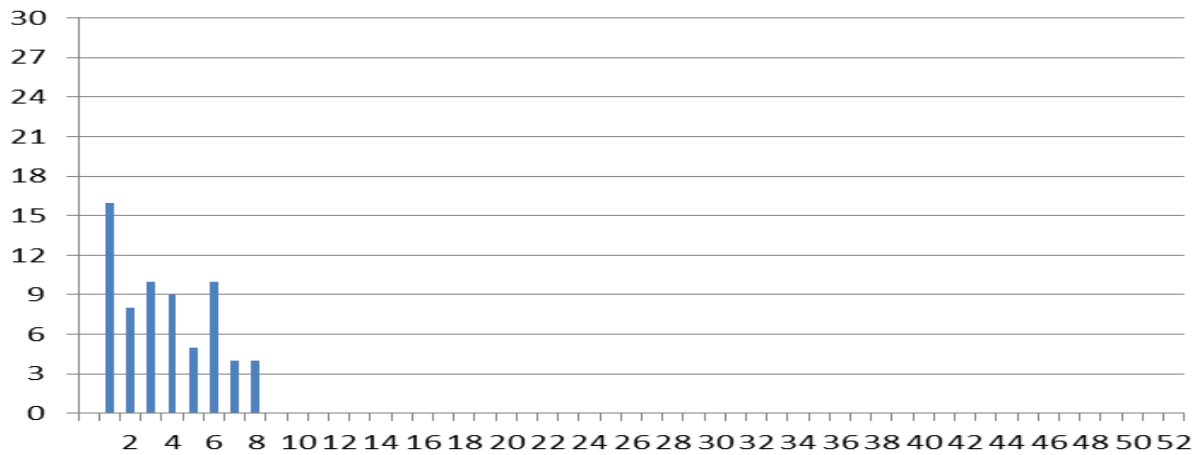
**GUAM SYNDROMIC DISEASE SURVEILLANCE
 GMHA-ED PATIENT DIAGNOSES BY WEEK, 2015**



**FLU/ILI AS A PERCENT OF TOTAL PATIENTS SEEN, GMHA-ED, 2015
(3-WEEK SMOOTHED)**



**NUMBER OF CASES OF INFLUENZA AND ILI REPORTED BY
SENTINEL PHYSICIANS BY WEEK REPORTED, 2015**



GUAM SENTINEL PHYSICIAN INFLUENZA SURVEILLANCE

REPORTS OF INFLUENZA OR INFLUENZA-LIKE ILLNESSES
RECEIVED FOR THE WEEK ENDING 2/28/15

Four cases reported by sentinel physicians

Bureau of Communicable Disease Control
Guam Department of Public Health & Social Services
H1N1 INFLUENZA SURVEILLANCE, WEEK 7
NO CASES OF H1N1 REPORTED FOR WEEK 8
Cumulative 2015: 0 civilian & 0 military cases

INFECTION CONTROL DEPARTMENT
 GUAM MEMORIAL HOSPITAL AUTHORITY
HOSPITALIZATIONS FOR INFLUENZA A BY AGE
AND MORBIDITY REPORTING WEEK, 2015

AGE	1	2	3	4	5	6	7	8	9	10	TOTAL
0-4											
5-18											
19-24											
25-49											
50-64											
65+											
TOTAL	0	0	0	0	0	0	0	0			

Bureau of Communicable Disease Control
Guam Department of Public Health & Social Services
ISLAND-WIDE COMMUNICABLE DISEASE REPORT

REPORTS RECEIVED DURING THE WEEK ENDING 2/28/2015

<i>Achromobacter</i>	1
<i>Chlamydia trachomatis</i>	12
Conjunctivitis	17
Gonorrhea	1
<i>E. coli</i> MDR, ESBL+	2
Hepatitis A	1
Influenza	6
HPV	2
HSV-1	1
<i>Klebsiella pneumoniae</i>	1
MRSA	6
Pertussis	6
Salmonellosis	1
Scabies	9
Scarlet fever	1
Streptococcal sore throat	17
Streptococcal disease, other	2
Syphilis	2
Varicella	7
VRE	1

□

INFECTION CONTROL DEPARTMENT
 GUAM MEMORIAL HOSPITAL AUTHORITY
**GMHA-EMERGENCY DEPARTMENT CLINICAL DIAGNOSES OF INFLUENZA OR
 FLU-SYNDROME BY WEEK AND PATIENT’S VILLAGE OF RESIDENCE, 2015**
 (Villages listed geographically from northern-most to southern-most)

VILLAGE	WEEK										TOTAL	2015 RATE
	1	2	3	4	5	6	7	8	9	10		
Yigo	1	1	0	1	4	2	1	2			12	57.55
Dededo	3	1	4	1	1	4	6	3			23	50.41
Tamuning	2	1	1	0	0	0	1	3			8	40.03
Barrigada	0	1	1	0	0	1	1	0			4	44.40
Mangilao	0	1	0	2	0	1	1	0			5	32.42
Mongmong-T-M	2	0	3	0	0	1	1	1			8	115.46
Hagatña	0	0	0	0	0	0	1	0			1	93.72
Agaña Heights	0	0	0	0	0	0	0	0			0	0.00
Sinajana	0	0	0	0	0	0	1	0			1	38.01
Chalan Pago-Ordot	1	0	0	0	0	0	0	1			2	28.88
Asan-Maina	0	0	0	0	0	0	0	0			0	0.00
Piti	0	0	0	0	0	0	0	0			0	0.00
Santa Rita	1	2	0	0	0	0	0	1			4	64.76
Agat	1	1	0	1	0	1	1	0			5	100.16
Yona	1	1	0	0	0	0	0	1			3	45.60
Talofofo	0	0	0	0	0	0	0	0			0	0.00
Inarajan	1	0	0	0	0	0	1	1			3	129.98
Merizo	0	2	0	1	1	1	0	0			5	266.24
Umatac	0	0	0	0	0	0	0	0			0	0.00
Tourist	2	0	0	0	0	1	0	1			4	
Unknown	0	0	0	0	0	0	1	0			1	
TOTAL	15	11	9	6	6	12	16	14			89	55.01

NOTE: Rate = cases per 100,000 population for the specified period.

INFLUENZA/ILI ACTIVITY LEVEL - Widespread (11 villages affected)
 (ACTIVITY LEVELS: No activity, Sporadic, Local, Regional, Widespread)

GUAM ANIMAL DISEASE (ZONOSSES) REPORTS
 REPORTS RECEIVED FOR THE WEEK ENDING 2/28/2015

Anaplasmosis – 1 canine