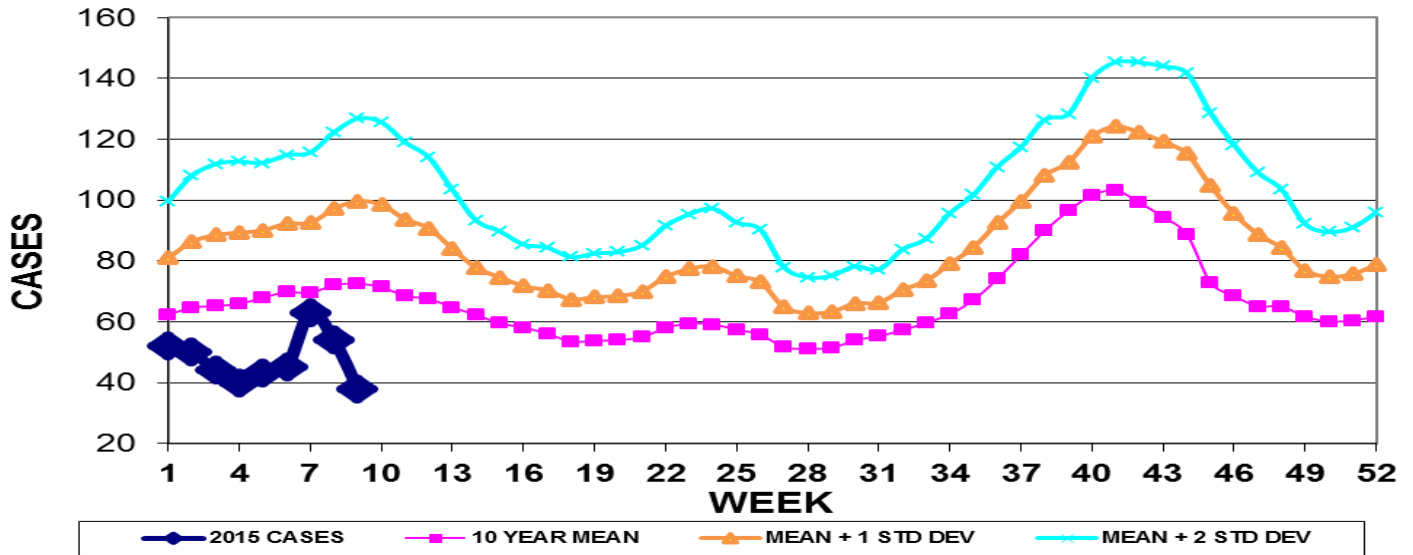


INFECTION CONTROL DEPARTMENT  
 GUAM MEMORIAL HOSPITAL AUTHORITY  
**GUAM EPIDEMIOLOGY NEWSLETTER**

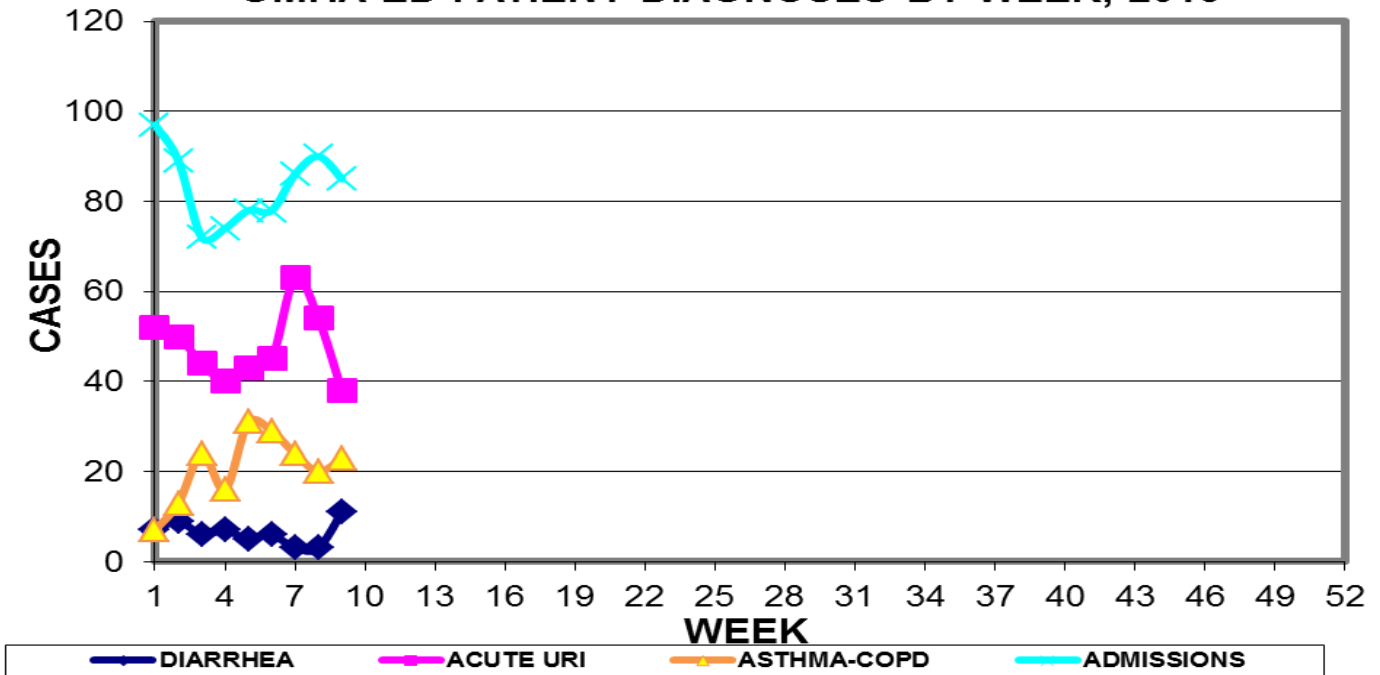
REPORT FOR WEEK ENDING: 3/7/2015 (Reporting week 2015-9)

**GUAM REPORTS**

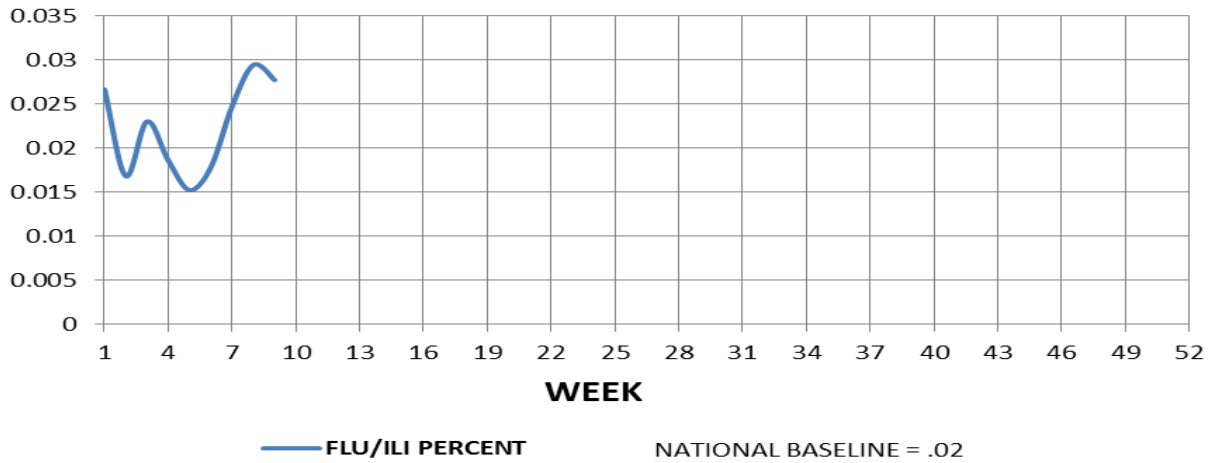
**GUAM ACUTE RESPIRATORY INFECTION SURVEILLANCE 2015;  
 GMHA-EMERGENCY DEPARTMENT PATIENTS BY WEEK SEEN**



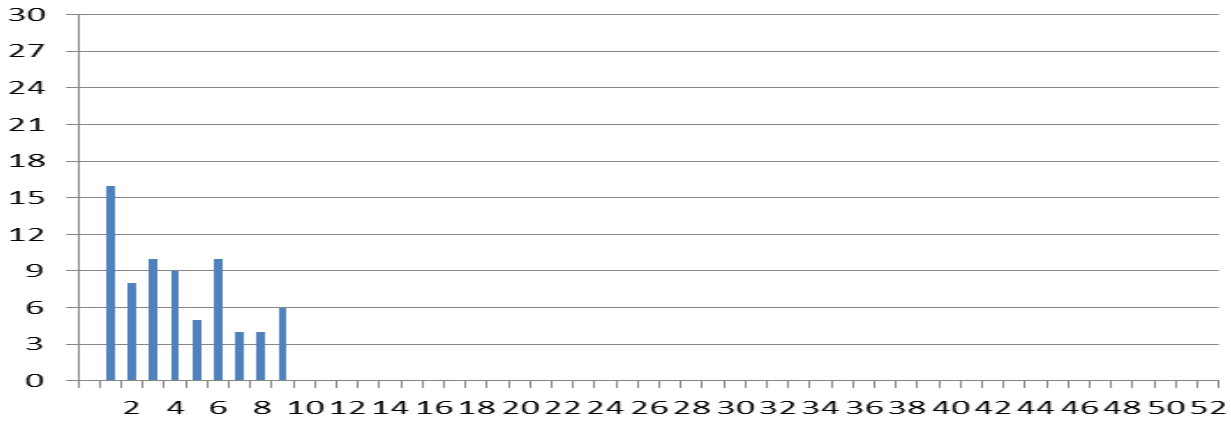
**GUAM SYNDROMIC DISEASE SURVEILLANCE  
 GMHA-ED PATIENT DIAGNOSES BY WEEK, 2015**



**FLU/ILI AS A PERCENT OF TOTAL PATIENTS SEEN, GMHA-ED, 2015  
(3-WEEK SMOOTHED)**



**NUMBER OF CASES OF INFLUENZA AND ILI REPORTED BY  
SENTINEL PHYSICIANS BY WEEK REPORTED, 2015**



**GUAM SENTINEL PHYSICIAN INFLUENZA SURVEILLANCE**

REPORTS OF INFLUENZA OR INFLUENZA-LIKE ILLNESSES  
RECEIVED FOR THE WEEK ENDING 3/7/15

Six cases reported by sentinel physicians

Bureau of Communicable Disease Control  
**Guam Department of Public Health & Social Services**  
**H1N1 INFLUENZA SURVEILLANCE, WEEK 9**  
**NO CASES OF H1N1 REPORTED FOR WEEK 9**  
**Cumulative 2015: 0 civilian & 0 military cases**

INFECTION CONTROL DEPARTMENT  
 GUAM MEMORIAL HOSPITAL AUTHORITY  
**HOSPITALIZATIONS FOR INFLUENZA A BY AGE**  
**AND MORBIDITY REPORTING WEEK, 2015**

<b>AGE</b>	<b>1</b>	<b>2</b>	<b>3</b>	<b>4</b>	<b>5</b>	<b>6</b>	<b>7</b>	<b>8</b>	<b>9</b>	<b>10</b>	<b>TOTAL</b>
0-4											
5-18											
19-24											
25-49											
50-64											
65+											
<b>TOTAL</b>	<b>0</b>	<b>0</b>	<b>0</b>	<b>0</b>	<b>0</b>	<b>0</b>	<b>0</b>	<b>0</b>	<b>0</b>		

Bureau of Communicable Disease Control  
**Guam Department of Public Health & Social Services**  
**ISLAND-WIDE COMMUNICABLE DISEASE REPORT**

REPORTS RECEIVED DURING THE WEEK ENDING 3/7/2015

<i>Chlamydia trachomatis</i>	22
<i>Clostridium difficile</i>	1
Conjunctivitis	9
Gonorrhea	5
<i>E. coli</i> MDR, ESBL+	4
Hepatitis C	1
Influenza	4
<i>Klebsiella pneumoniae</i>	1
MRSA	15
Respiratory syncytial virus	2
Scabies	8
Streptococcal sore throat	9
Streptococcal disease, other	1
Syphilis, neonatal	1
Varicella	2
VRE	1

INFECTION CONTROL DEPARTMENT  
 GUAM MEMORIAL HOSPITAL AUTHORITY  
**GMHA-EMERGENCY DEPARTMENT CLINICAL DIAGNOSES OF INFLUENZA OR  
 FLU-SYNDROME BY WEEK AND PATIENT'S VILLAGE OF RESIDENCE, 2015**  
 (Villages listed geographically from northern-most to southern-most)

VILLAGE	WEEK										TOTAL	2015 RATE
	1	2	3	4	5	6	7	8	9	10		
Yigo	1	1	0	1	4	2	1	2	1		13	62.34
Dededo	3	1	4	1	1	4	6	3	3		26	56.98
Tamuning	2	1	1	0	0	0	1	3	1		9	45.03
Barrigada	0	1	1	0	0	1	1	0	2		6	66.59
Mangilao	0	1	0	2	0	1	1	0	0		5	32.42
Mongmong-T-M	2	0	3	0	0	1	1	1	1		9	129.89
Hagatña	0	0	0	0	0	0	1	0	0		1	93.72
Agaña Heights	0	0	0	0	0	0	0	0	0		0	0.00
Sinajana	0	0	0	0	0	0	1	0	0		1	38.01
Chalan Pago-Ordot	1	0	0	0	0	0	0	1	0		2	28.88
Asan-Maina	0	0	0	0	0	0	0	0	0		0	0.00
Piti	0	0	0	0	0	0	0	0	0		0	0.00
Santa Rita	1	2	0	0	0	0	0	1	0		4	64.76
Agat	1	1	0	1	0	1	1	0	0		5	100.16
Yona	1	1	0	0	0	0	0	1	0		3	45.60
Talofofo	0	0	0	0	0	0	0	0	1		1	32.30
Inarajan	1	0	0	0	0	0	1	1	0		3	129.98
Merizo	0	2	0	1	1	1	0	0	0		5	266.24
Umatac	0	0	0	0	0	0	0	0	0		0	0.00
Tourist	2	0	0	0	0	1	0	1	0		4	
Unknown	0	0	0	0	0	0	1	0	0		1	
<b>TOTAL</b>	<b>15</b>	<b>11</b>	<b>9</b>	<b>6</b>	<b>6</b>	<b>12</b>	<b>16</b>	<b>14</b>	<b>9</b>		<b>98</b>	<b>60.57</b>

NOTE: Rate = cases per 100,000 population for the year to date.

INFLUENZA/ILI ACTIVITY LEVEL - Regional (9 villages affected)  
 (ACTIVITY LEVELS: No activity, Sporadic, Local, Regional, Widespread)

**GUAM ANIMAL DISEASE (ZONOSSES) REPORTS**  
 REPORTS RECEIVED FOR THE WEEK ENDING 3/7/2015

Babesiosis – 2 canine