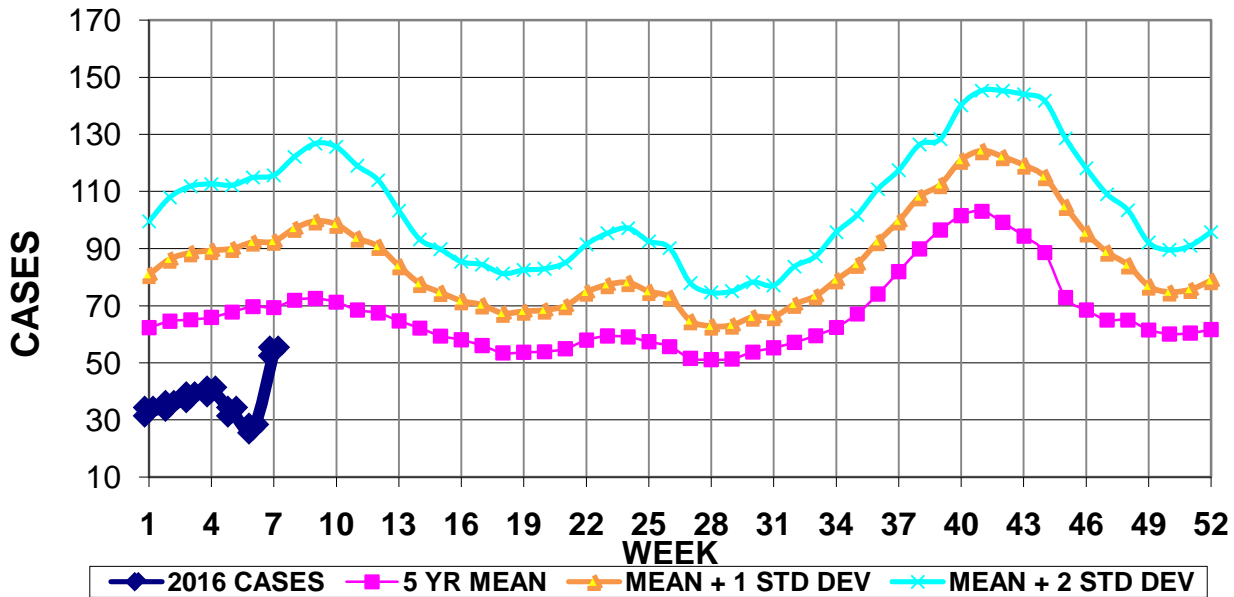


INFECTION CONTROL DEPARTMENT
 GUAM MEMORIAL HOSPITAL AUTHORITY
GUAM EPIDEMIOLOGY NEWSLETTER

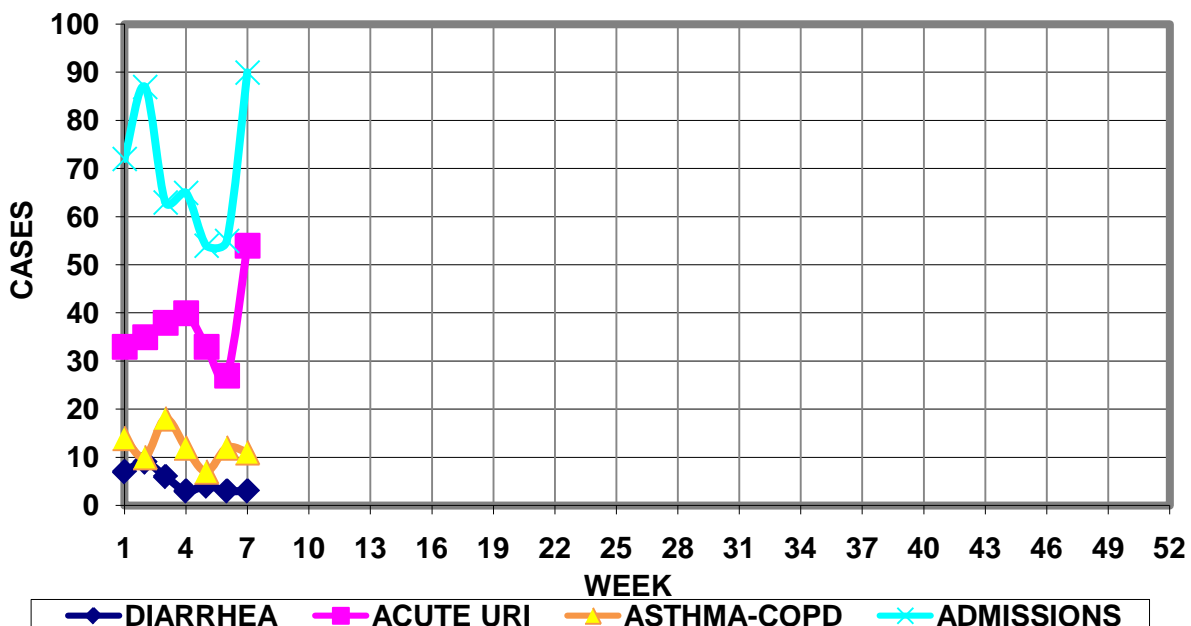
REPORT FOR WEEK ENDING: 2/20/2016 (Reporting week 2016-7)

GUAM REPORTS

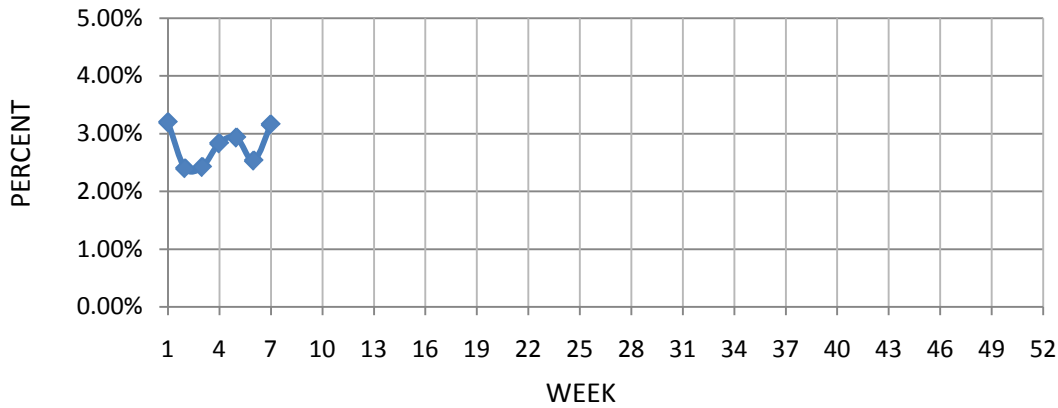
**GUAM ACUTE RESPIRATORY INFECTION SURVEILLANCE 2016;
 GMHA-EMERGENCY DEPARTMENT PATIENTS BY WEEK SEEN**



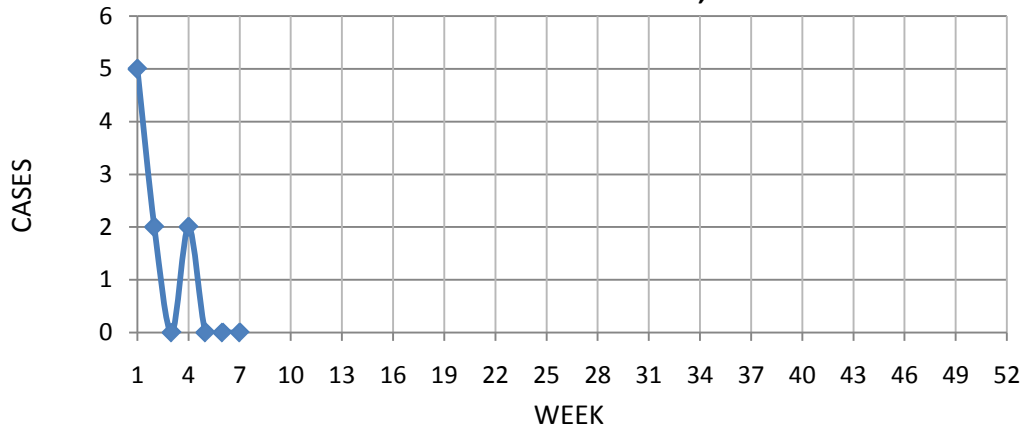
**GUAM SYNDROMIC DISEASE SURVEILLANCE
 GMHA-ED PATIENT DIAGNOSES BY WEEK, 2016**



PERCENT OF TOTAL PATIENTS SEEN IN THE GMHA-ER WITH A DIAGNOSIS OF FLU/ILI (3-WEEK SMOOTHED)



NUMBER OF CASES OF INFLUENZA AND ILI REPORTED BY SENTINEL PHYSICIANS BY WEEK REPORTED, 2016



GUAM SENTINEL PHYSICIAN INFLUENZA SURVEILLANCE

REPORTS OF INFLUENZA OR INFLUENZA-LIKE ILLNESSES
RECEIVED FOR THE WEEK ENDING 2/20/16

No cases reported by sentinel physicians

Bureau of Communicable Disease Control **Guam Department of Public Health & Social Services**

H1N1 INFLUENZA SURVEILLANCE, WEEK 7

NO CASES OF H1N1 REPORTED FOR 2016 WEEK 7

Cumulative 2016: 0 civilian & 0 military cases

INFECTION CONTROL DEPARTMENT
 GUAM MEMORIAL HOSPITAL AUTHORITY
HOSPITALIZATIONS FOR INFLUENZA A
BY AGE AND MORBIDITY REPORTING WEEK, 2016

AGE	1	2	3	4	5	6	7	8	9	10	TOTAL
0-4											
5-18											
19-24											
25-49											
50-64											
65+											
TOTAL	0	0	0	0	0	0	0				0

Bureau of Communicable Disease Control
Guam Department of Public Health & Social Services
ISLAND-WIDE COMMUNICABLE DISEASE REPORT

REPORTS RECEIVED DURING THE WEEK ENDING 2/20/2016

<i>Acinetobacterbaumannii</i> Pan-resistant	1
<i>Chlamydia trachomatis</i>	40
Chickenpox	1
Conjunctivitis	4
<i>E. coli</i> MDR, ESBL+	2
Gonorrhea	5
Hepatitis B	3
Hepatitis C	1
Influenza A	14
Influenza B	2
MRSA	5
<i>Pseudomonas aruginosa</i> MDR	1
Scabies	16
Scarletfever	1
Streptococcal sore throat	12
Streptococcal disease, other	2
Syphilis (stage not specified)	1

INFECTION CONTROL DEPARTMENT
GUAM MEMORIAL HOSPITAL AUTHORITY

**GMHA-EMERGENCY DEPARTMENT CLINICAL DIAGNOSES OF INFLUENZA OR
FLU-SYNDROME BY WEEK AND PATIENT'S VILLAGE OF RESIDENCE, 2016**

(Villages listed geographically from northern-most to southern-most)

VILLAGE	WEEK										TOTAL	2016RATE
	1	2	3	4	5	6	7	8	9	10		
Yigo	0	1	0	2	1	0	4				8	38.14
Dededo	1	4	3	3	1	1	3				16	34.86
Tamuning	0	0	0	1	1	0	1				3	14.92
Barrigada	0	2	0	0	0	1	2				3	33.10
Mangilao	0	1	1	1	1	0	3				7	45.12
Mongmong-T-M	1	0	1	1	1	0	3				7	100.43
Hagatña	0	0	0	0	0	0	0				0	0
Agaña Heights	0	0	0	1	0	0	1				2	51.43
Sinajana	1	0	0	0	0	0	0				1	37.78
Chalan Pago-Ordot	0	0	0	0	0	0	0				0	0
Asan-Maina	0	0	0	0	0	0	0				0	0
Piti	0	0	0	0	0	0	1				1	67.34
Santa Rita	1	0	0	0	1	0	0				2	32.19
Agat	2	0	0	0	1	1	2				6	119.50
Yona	0	0	3	1	0	2	0				6	90.66
Talofof	0	0	0	0	0	0	0				0	0
Inarajan	1	0	0	0	0	0	1				2	86.17
Merizo	0	0	0	0	1	0	0				1	52.94
Umatac	0	0	0	0	0	0	0				0	0
Tourist	0	1	1	1	0	0	1				4	
Unknown	0	0	0	0	0	0	0				0	
TOTAL	7	9	9	11	8	5	22				71	43.63

NOTE: Rate = cases per 100,000 population for the year to date.

GMHA-ER INFLUENZA/ILI ACTIVITY LEVEL – WIDESPREAD (10 of 19 villages affected)

(ACTIVITY LEVELS: No activity, Sporadic, Local, Regional, Widespread)

GMHA-ER INFLUENZA/ILI ACTIVITY BY AGE – WEEK 7

GENDER	Total	< 1	1 – 4	5 - 9	10-14	15-19	20-24	25-29	30-39	40-49	50-64	65+	UNK
MALE	15	3	4	3	0	1	0	0	2	1	1	0	0
FEMALE	7	2	3	0	0	0	0	0	1	1	0	0	0
TOTAL	22	5	7	3	0	1	0	0	3	2	1	0	0

GUAM ANIMAL DISEASE (ZOOSES) REPORTS

Babesiosis - 2 canine, Ehrlichiosis – 1 canine