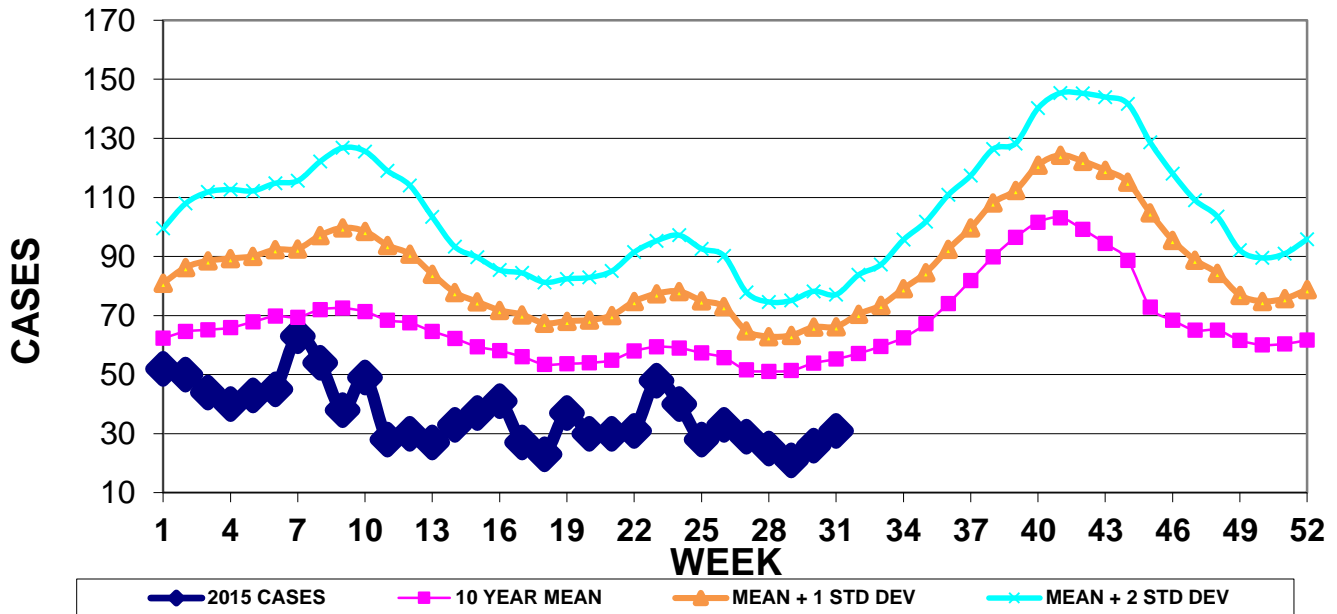


INFECTION CONTROL DEPARTMENT
 GUAM MEMORIAL HOSPITAL AUTHORITY
GUAM EPIDEMIOLOGY NEWSLETTER

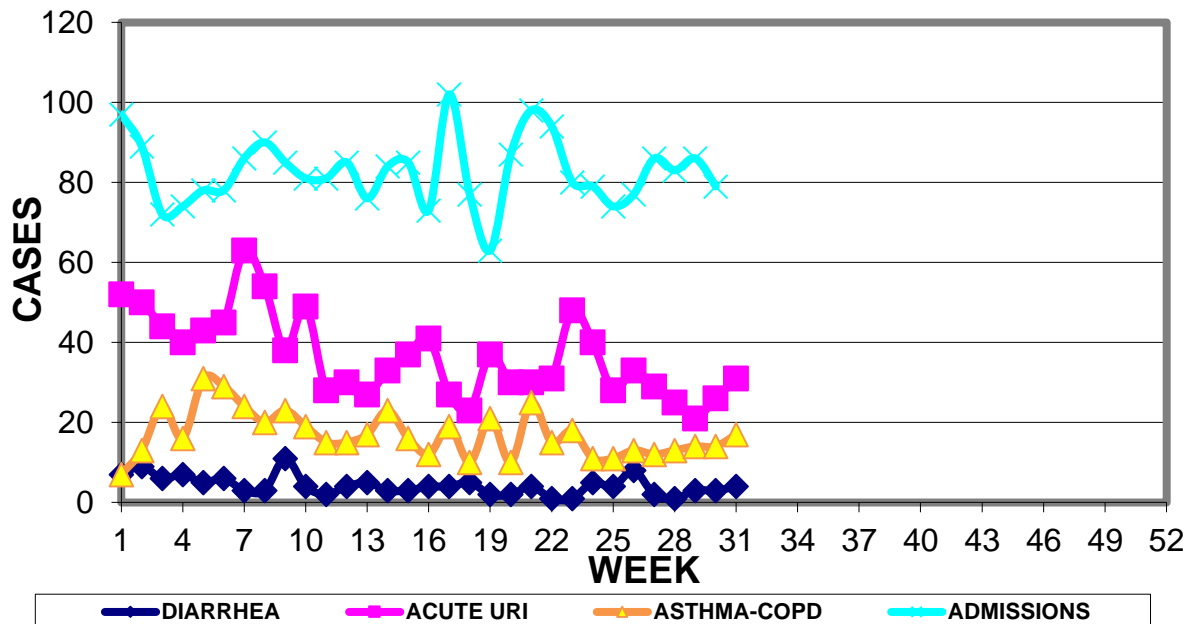
REPORT FOR WEEK ENDING: 8/8/2015 (Reporting week 2015-31)

GUAM REPORTS

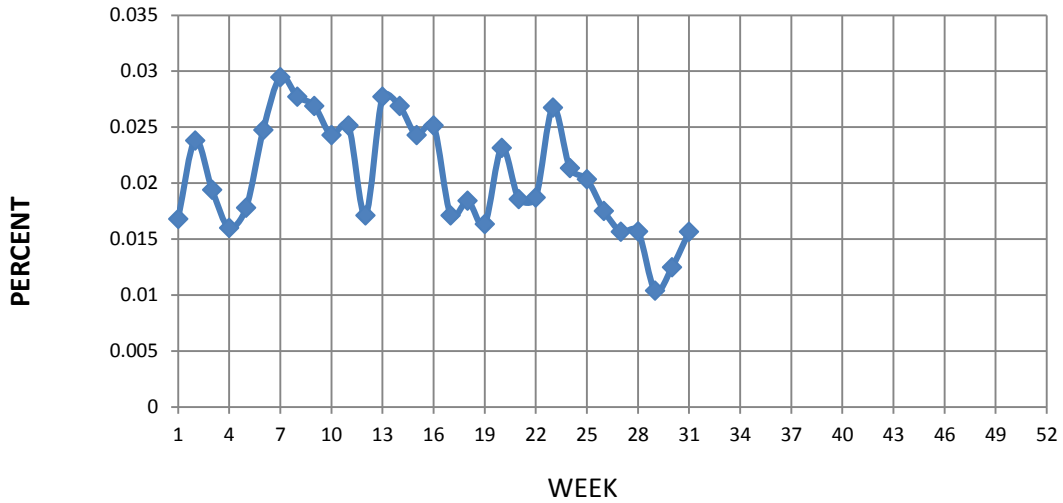
**GUAM ACUTE RESPIRATORY INFECTION SURVEILLANCE 2015;
 GMHA-EMERGENCY DEPARTMENT PATIENTS BY WEEK SEEN**



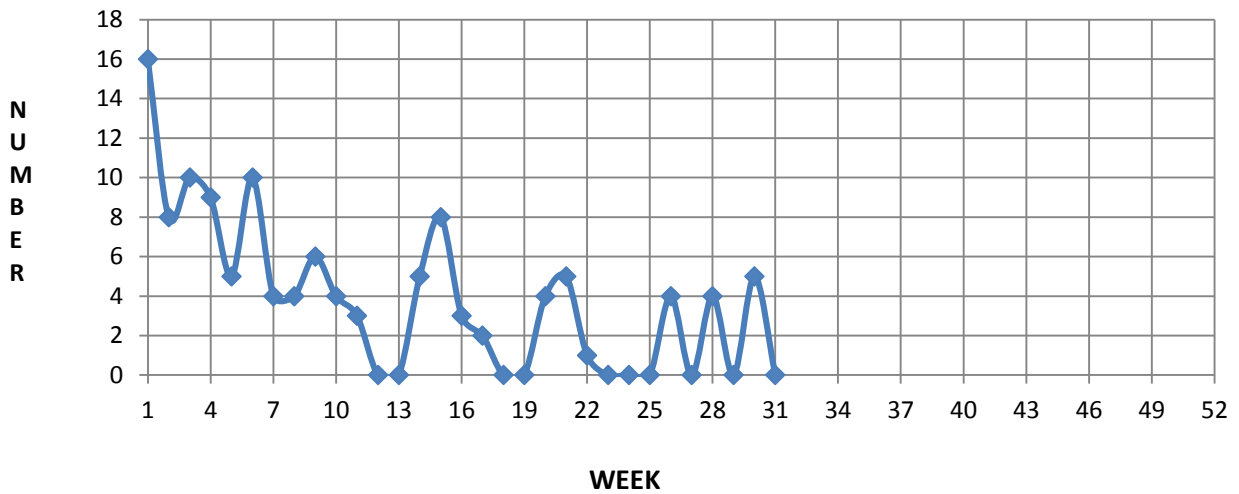
**GUAM SYNDROMIC DISEASE SURVEILLANCE
 GMHA-ED PATIENT DIAGNOSES BY WEEK, 2015**



PERCENT OF TOTAL GMHA-ER PATIENTS WITH INFLUENZA/ILI SYMPTOMS (3-week smoothed)



NUMBER OF CASES OF INFLUENZA AND ILI REPORTED BY SENTINEL PHYSICIANS BY WEEK REPORTED, 2015



GUAM SENTINEL PHYSICIAN INFLUENZA SURVEILLANCE

REPORTS OF INFLUENZA OR INFLUENZA-LIKE ILLNESSES RECEIVED FOR THE WEEK ENDING 8/8/15

No cases reported by sentinel physicians

Bureau of Communicable Disease Control
Guam Department of Public Health & Social Services
H1N1 INFLUENZA SURVEILLANCE, WEEK 31
NO CASES OF H1N1 REPORTED FOR WEEK 31
Cumulative 2015: 0 civilian & 0 military cases

INFECTION CONTROL DEPARTMENT
 GUAM MEMORIAL HOSPITAL AUTHORITY
HOSPITALIZATIONS FOR INFLUENZA A BY AGE
AND MORBIDITY REPORTING WEEK, 2015

AGE	20	21	22	23	24	25	26	27	28	29	30	31	TOTAL
0-4													
5-18			1										1
19-24													
25-49													
50-64													
65+													1
TOTAL	0	0	1	0	0	0	0	0	0	0	0	0	2

Bureau of Communicable Disease Control
Guam Department of Public Health & Social Services
ISLAND-WIDE COMMUNICABLE DISEASE REPORT

REPORTS RECEIVED DURING THE WEEK ENDING 8/8/2015

<i>Chlamydia trachomatis</i>	27
Conjunctivitis	13
Food poisoning	2
Gonorrhea	1
Hepatitis C	1
HIV	1
HPV	2
HSV 1	1
HSV 2	2
Influenza	4
MRSA	8
<i>Mycobacterium avium</i> complex	1
<i>Mycobacterium mageritense</i>	1
<i>Mycobacterium smegmatis</i>	1
Scabies	2
Scarlet fever	1
Streptococcal sore throat	3
Streptococcal disease, other	3
<i>Streptomyces</i> species	1

INFECTION CONTROL DEPARTMENT
 GUAM MEMORIAL HOSPITAL AUTHORITY
**GMHA-EMERGENCY DEPARTMENT CLINICAL DIAGNOSES OF INFLUENZA OR
 FLU-SYNDROME BY WEEK AND PATIENT'S VILLAGE OF RESIDENCE, 2015**
 (Villages listed geographically from northern-most to southern-most)

WEEK

VILLAGE	22	23	24	25	26	27	28	29	30	31	TOTAL	2015 RATE
Yigo	1	0	1	1	0	0	2	0	2	2	36	177.53
Dededo	1	5	3	1	2	1	4	0	0	3	81	177.53
Tamuning	1	1	1	1	2	1	0	0	1	0	27	135.10
Barrigada	0	1	0	0	0	0	0	0	0	0	11	122.09
Mangilao	1	1	1	0	0	1	0	0	0	0	23	149.14
Mongmong-T-M	0	1	0	0	0	0	0	1	0	0	20	288.64
Hagatña	1	1	0	1	1	0	1	0	0	0	7	656.04
Agaña Heights	0	0	0	0	0	0	0	0	0	0	0	0.00
Sinajana	0	0	0	0	0	1	0	0	0	0	5	190.04
Chalan Pago-Ordot	0	0	0	0	0	0	0	0	1	0	5	72.19
Asan-Maina	0	0	0	0	1	0	0	0	0	0	1	46.08
Piti	0	0	0	0	0	0	0	0	0	1	1	67.75
Santa Rita	0	1	0	1	0	0	0	0	0	0	7	113.32
Agat	0	0	0	0	0	0	0	0	2	0	13	260.42
Yona	1	0	0	0	1	1	1	0	1	0	8	121.60
Talofof	1	0	1	0	0	0	0	0	0	0	4	129.20
Inarajan	1	0	0	1	1	0	0	0	0	0	8	346.62
Merizo	0	0	0	0	0	0	0	0	0	0	5	266.24
Umatac	0	0	0	0	0	0	0	0	1	0	2	251.89
Tourist	0	0	0	0	0	0	0	0	0	0	5	
Unknown	1	0	0	1	0	0	0	0	0	0	3	
TOTAL	9	11	7	7	8	5	8	1	8	6	275	169.68

NOTE: Rate = cases per 100,000 population for the year to date.

INFLUENZA/ILI ACTIVITY LEVEL - REGIONAL (6 villages affected)
 (ACTIVITY LEVELS: No activity, Sporadic, Local, Regional, Widespread)

GUAM ANIMAL DISEASE (ZONOSSES) REPORTS

Anaplasmosis – 3 canine, Babesiosis – 3 canine, Ehrlichiosis – 1 canine