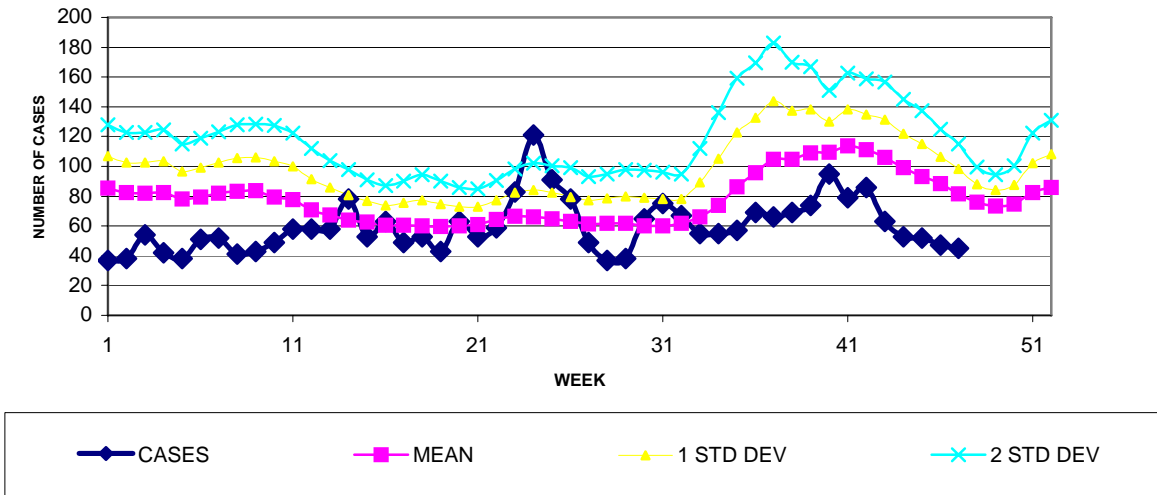


**GUAM EPIDEMIOLOGY NEWSLETTER**

REPORT FOR WEEK ENDING: 11/25/2006 (Reporting week 2006-47)

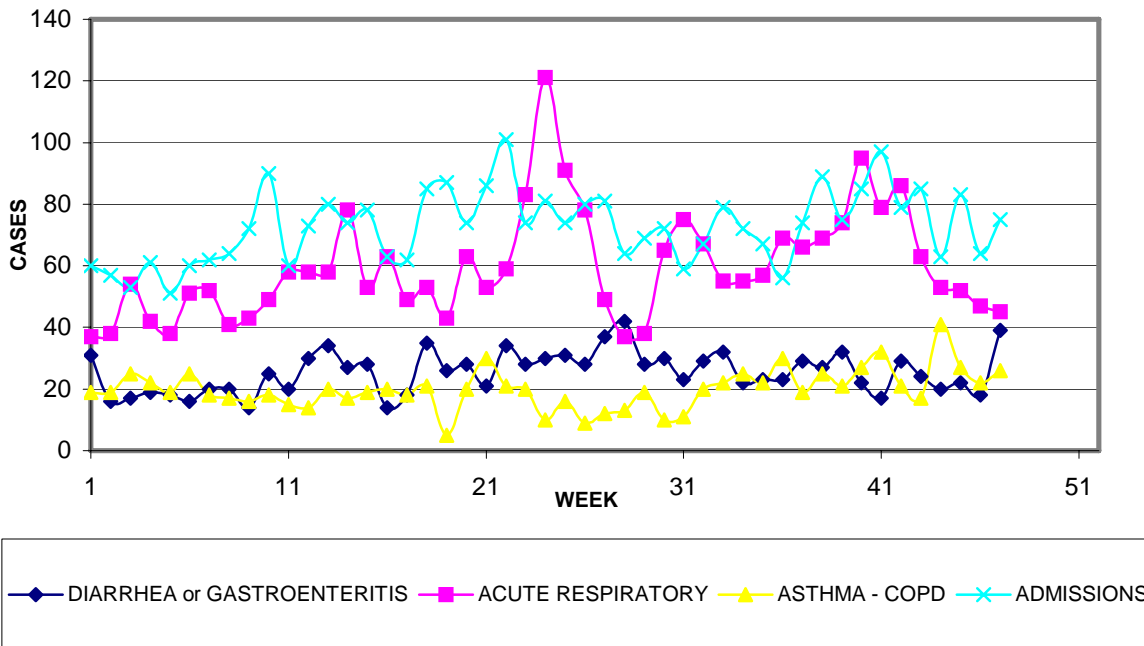
**GUAM REPORTS**

**GUAM ACUTE RESPIRATORY DISEASE SURVEILLANCE, 2006;  
 NUMBER OF PATIENTS SEEN IN THE GMHA-ED BY WEEK SEEN**



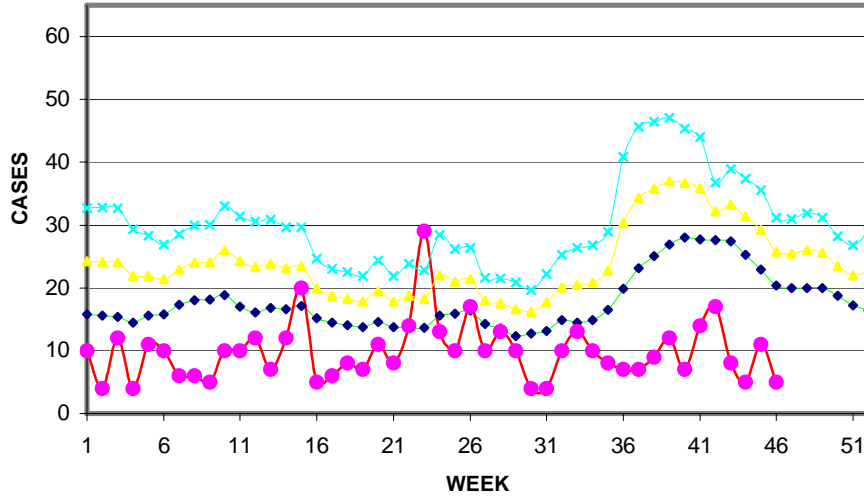
◆ CASES      ■ MEAN      ▲ 1 STD DEV      × 2 STD DEV

**GUAM SYNDROMIC DISEASE SURVEILLANCE  
 GMHA-ED PATIENT DIAGNOSES BY WEEK FOR CALENDAR YEAR 2006**



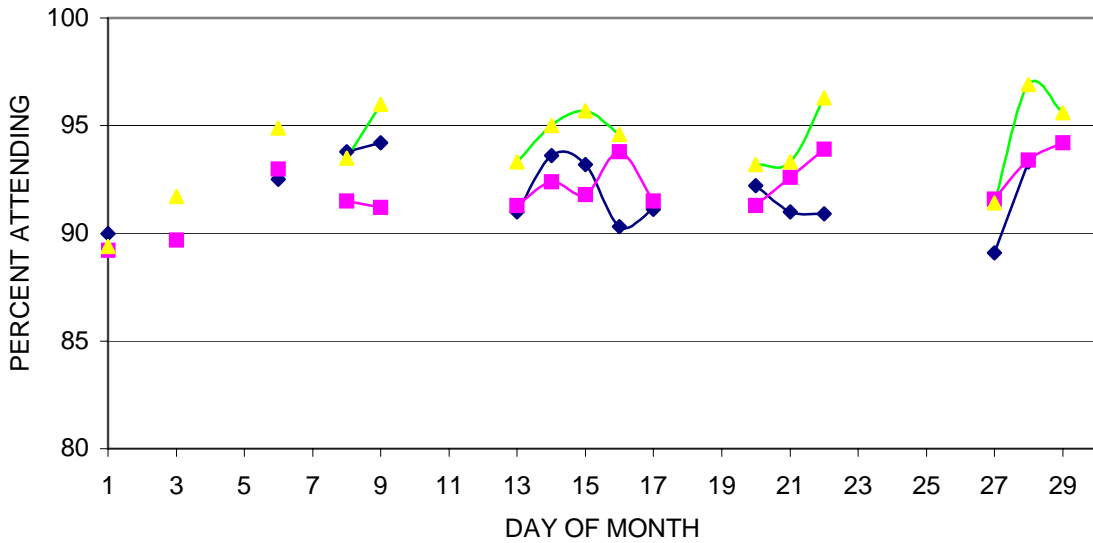
◆ DIARRHEA or GASTROENTERITIS      ■ ACUTE RESPIRATORY      ▲ ASTHMA - COPD      × ADMISSIONS

**MEDICAL RECORDS DEPARTMENT  
 GUAM MEMORIAL HOSPITAL AUTHORITY  
 HOSPITAL INPATIENT DISCHARGES WITH DIAGNOSIS OF PNEUMONIA  
 BY WEEK DISCHARGED, 2006**



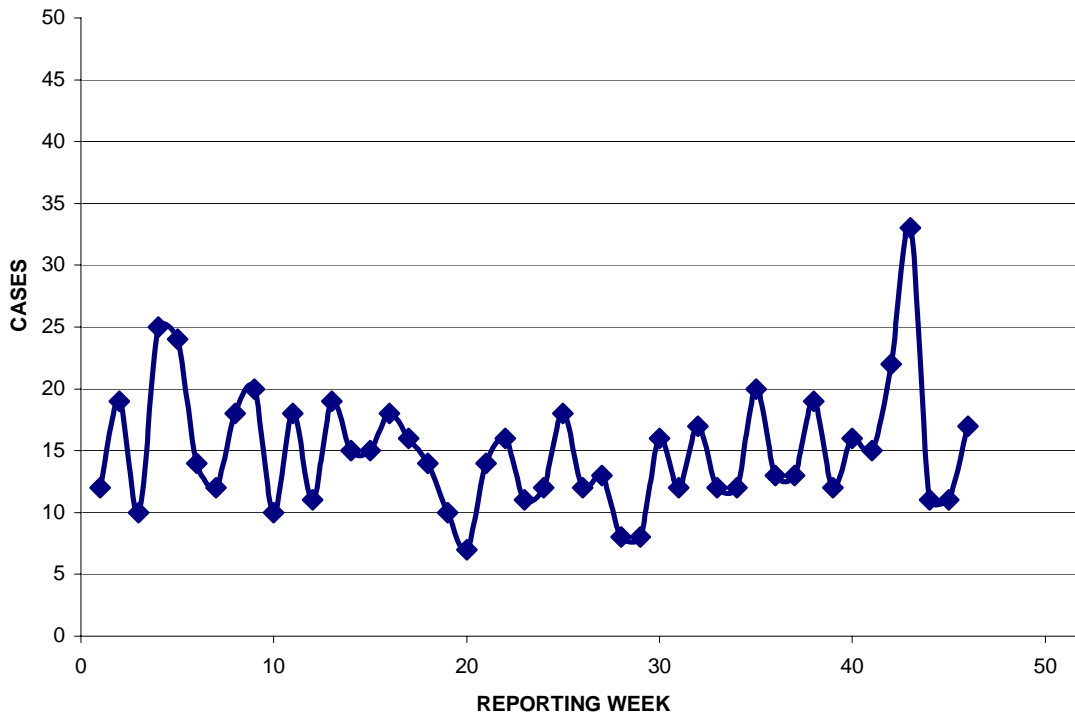
◆ 6-YEAR MEAN   
 ● 2006 CASES   
 ▲ MEAN + 1 STD   
 × MEAN + 2 STD

**GUAM PUBLIC SCHOOL ATTENDANCE BY REGION:  
 DAILY PERCENT ATTENDING , NOVEMBER 2006**



◆ NORTHERN   
 ■ CENTRAL   
 ▲ SOUTHERN

Preventive Medicine Department  
 US Naval Hospital Guam  
**PNEUMONIA REPORTED BY GUAM MILITARY TREATMENT FACILITIES  
 BY WEEK REPORTED, 2006**



**GUAM COMMUNICABLE DISEASE REPORT**

REPORTS ENTERED DURING THE **2 WEEK** PERIOD ENDING 11/25/2006

| DISEASE            | CASES |
|--------------------|-------|
| CAMPYLOBACTER      | 1     |
| CHICKENPOX         | 12    |
| CHLAMYDIA          | 3     |
| CONJUNCTIVITIS     | 4     |
| FOOD POISONING     | 4     |
| HAND, FOOT & MOUTH | 8     |
| IMPETIGO           | 1     |
| INFLUENZA AND FLU  | 12    |
| KAWASAKI SYNDROME  | 2     |
| MRSA               | 6     |
| SALMONELLOSIS      | 1     |
| SHIGELLOSIS        | 4     |
| STREP SORE THROAT  | 26    |
| VRE                | 1     |

NOTE: Cases of Hand, Foot and Mouth disease have been reported by 6 different physicians. Seven of the 8 cases attended 2 day care centers operated by the same firm; one of these centers has been permanently closed (not as a result of this outbreak), the other was closed for 2 days to permit a thorough sanitizing of the facility. Affected children were

excluded until cleared by their physician. No additional cases have been reported as of 11/29/2006. Although this disease is not on the Guam "Official List" of reportable communicable diseases, physicians are encouraged to report this and any other diseases that may represent outbreaks.

#### PERTUSSIS

As of November 29, 2006, the number of confirmed pertussis cases remains unchanged at 7 and the number of probable cases at 45. Twelve suspect cases remain under investigation, the most recent having cough onset on 11/11/06 .

#### TRAVEL NOTE

Those planning to travel to Saudi Arabia for the 2006-2007 annual Hajj may wish to review current strict vaccination requirements by visiting the following site:  
<[http://www.cdc.gov/travel/other/2006/recs\\_hajj\\_saudi\\_arabia.htm](http://www.cdc.gov/travel/other/2006/recs_hajj_saudi_arabia.htm)>.