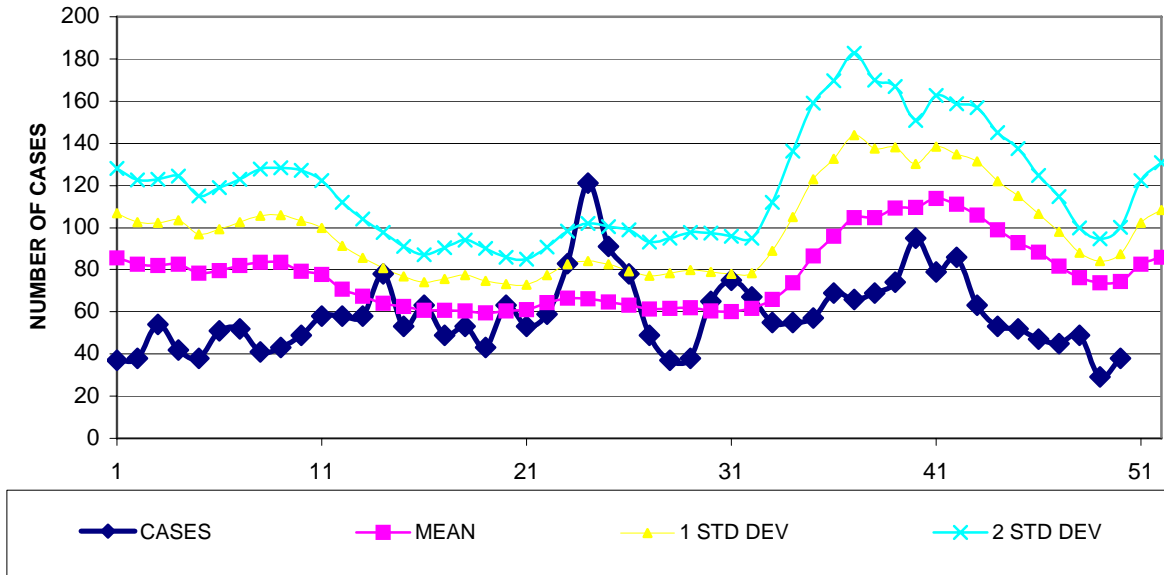


GUAM EPIDEMIOLOGY NEWSLETTER

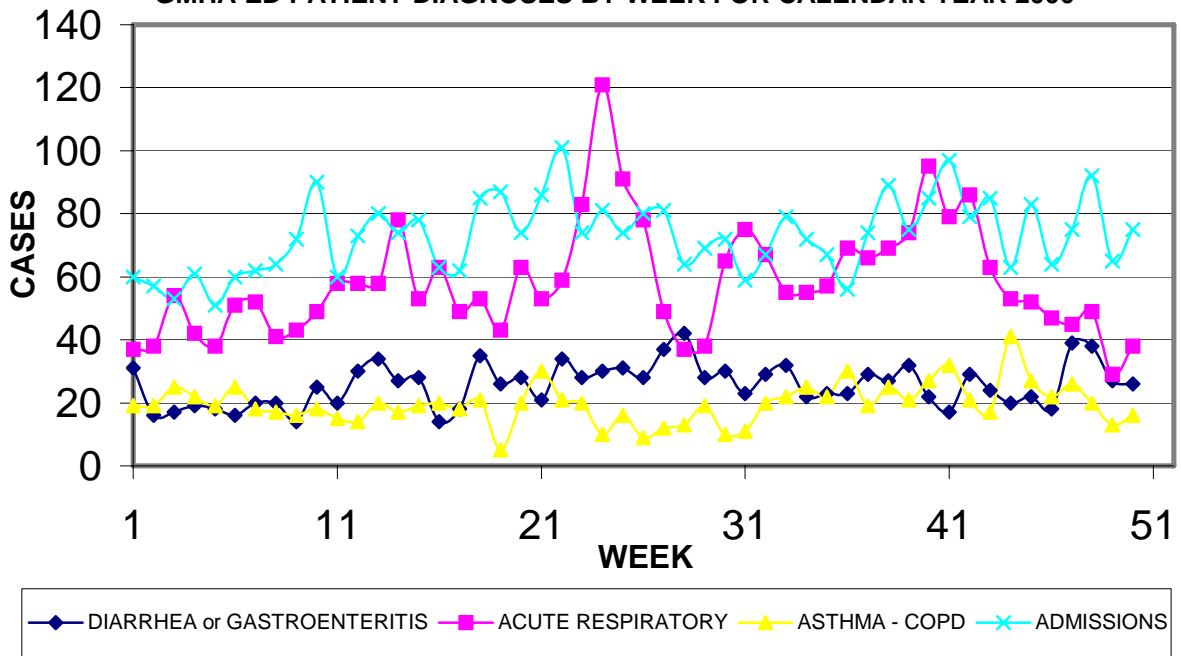
REPORT FOR WEEK ENDING: 12/16/2006 (Reporting week 2006-50)

GUAM REPORTS

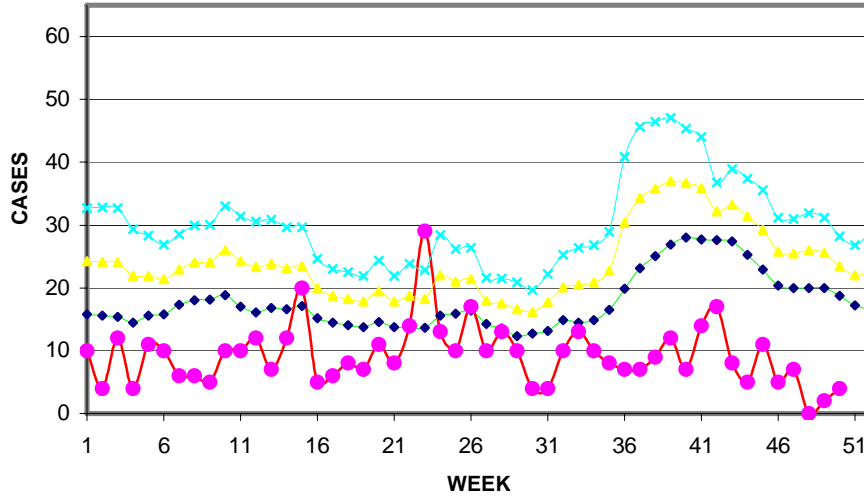
**GUAM ACUTE RESPIRATORY DISEASE SURVEILLANCE, 2006;
 NUMBER OF PATIENTS SEEN IN THE GMHA-ED BY WEEK SEEN**



**GUAM SYNDROMIC DISEASE SURVEILLANCE
 GMHA-ED PATIENT DIAGNOSES BY WEEK FOR CALENDAR YEAR 2006**

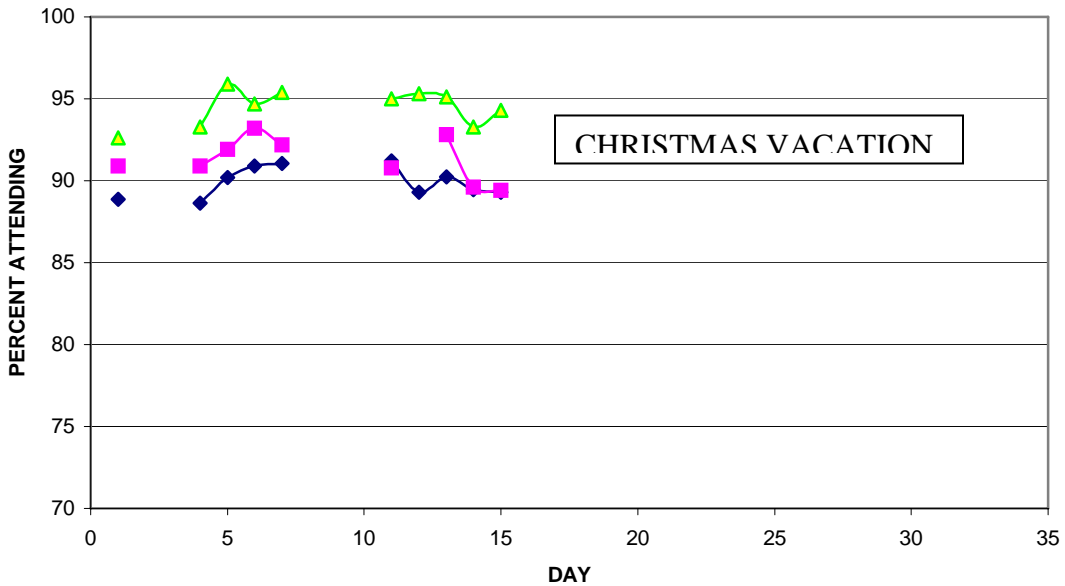


MEDICAL RECORDS DEPARTMENT
GUAM MEMORIAL HOSPITAL AUTHORITY
HOSPITAL INPATIENT DISCHARGES WITH DIAGNOSIS OF PNEUMONIA
BY WEEK DISCHARGED, 2006



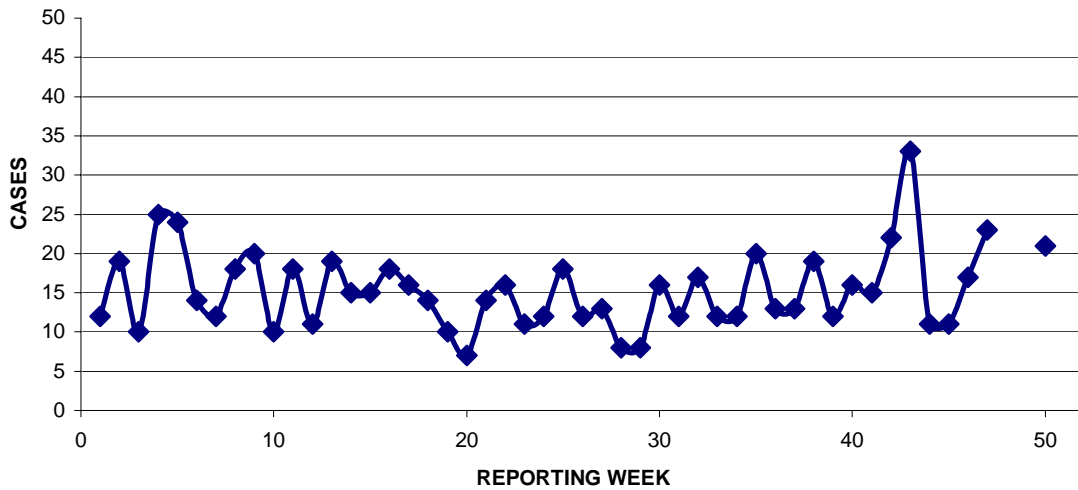
◆ 6-YEAR MEAN
● 2006 CASES
▲ MEAN + 1 STD
× MEAN + 2 STD

GUAM PUBLIC SCHOOL ATTENDANCE BY REGION:
DAILY PERCENT IN ATTENDANCE, DECEMBER, 2006



◆ NORTHERN
■ CENTRAL
▲ SOUTHERN

Preventive Medicine Department
 US Naval Hospital Guam
**PNEUMONIA REPORTED BY GUAM MILITARY TREATMENT FACILITIES
 BY WEEK REPORTED, 2006**



GUAM COMMUNICABLE DISEASE REPORT
 REPORTS ENTERED FOR THE WEEK ENDING 12/16/2006

DISEASE	CASES
C. DIFFICILE	3
CHICKENPOX	17
CHLAMYDIA	2
CONJUNCTIVITIS	1
FOOD POISONING	4
HAEMOPHILUS	4
HERPES ZOSTER	2
IMPETIGO	3
KAWASAKI SYNDROME	1
MRSA	8
SHIGELLOSIS	1
STREP SORE THROAT	1
SYPHILIS, LATENT	1

PERTUSSIS - GUAM

As of December 19, 2006, the number of confirmed pertussis cases remains unchanged at 7, the number of probable cases has been increased to 53, and 3 suspect cases remain under investigation. The onset of cough of the most recently reported confirmed, probable, or suspect case was 11/15/06.