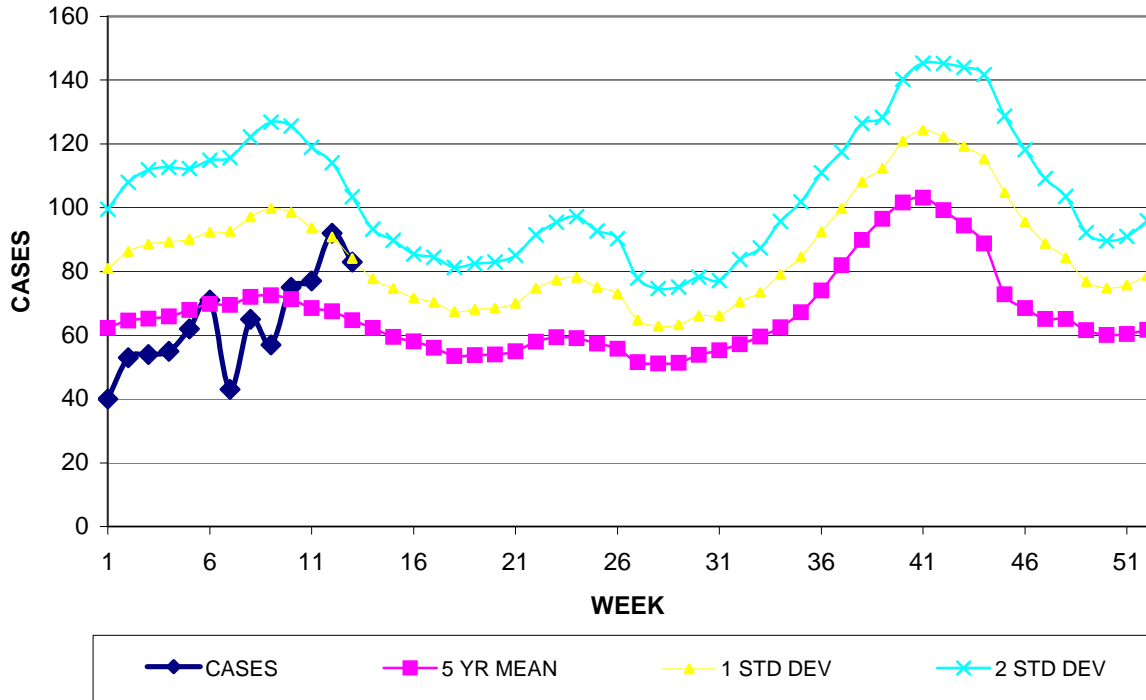


## GUAM EPIDEMIOLOGY NEWSLETTER

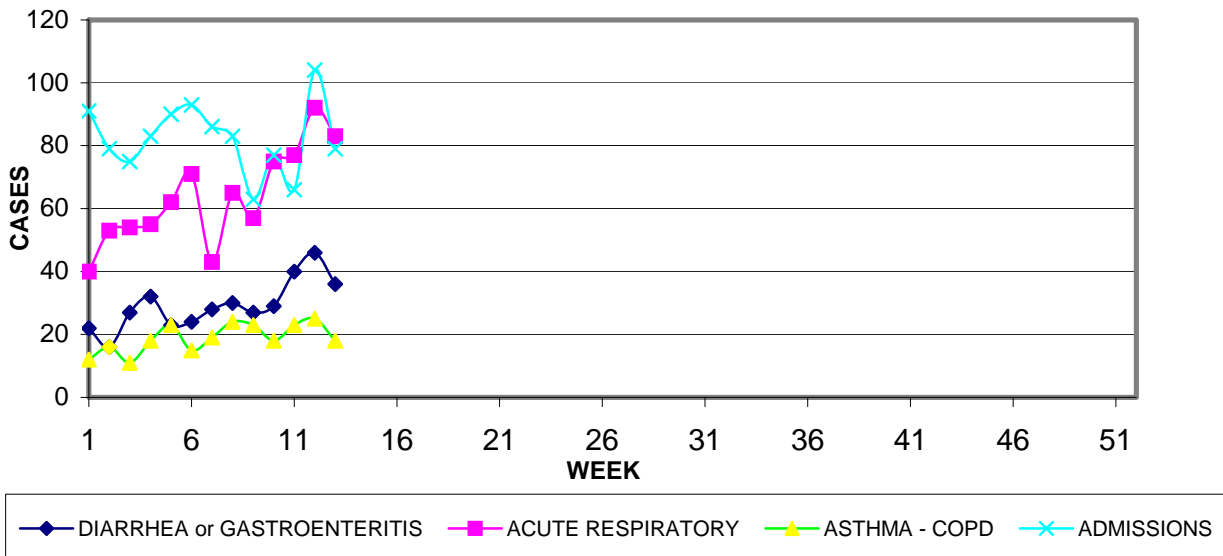
REPORT FOR WEEK ENDING: 3/31/2007 (Reporting week 2007-13)

### GUAM REPORTS

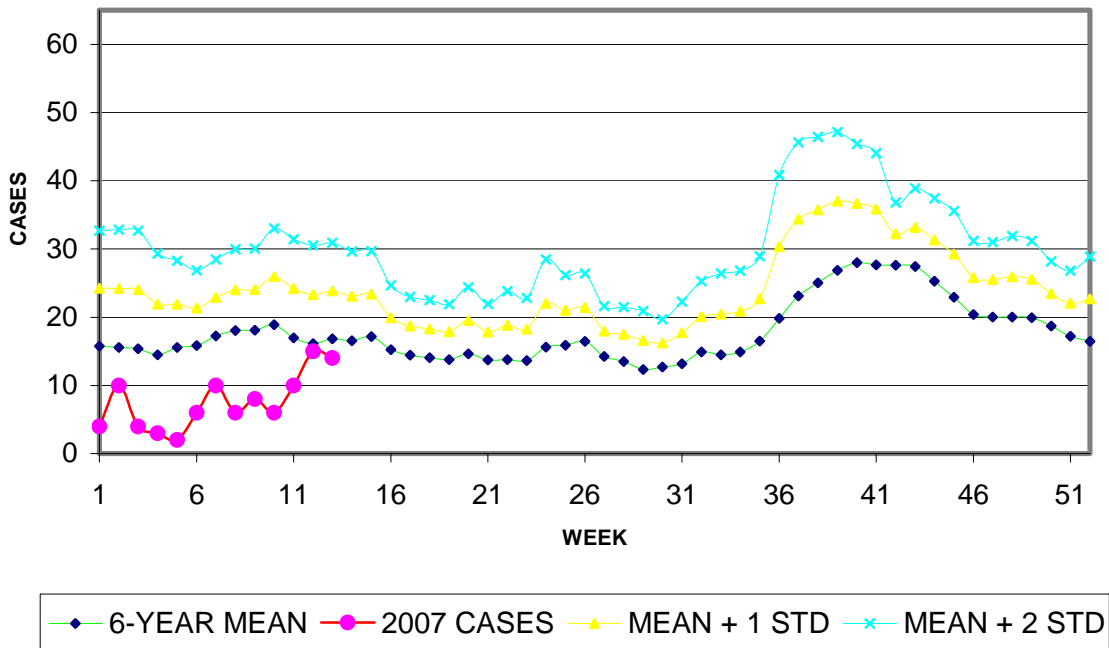
**GUAM ACUTE RESPIRATORY INFECTION SURVEILLANCE, 2007;  
 NUMBER OF PATIENTS SEEN IN THE GMHA-ED BY WEEK SEEN**



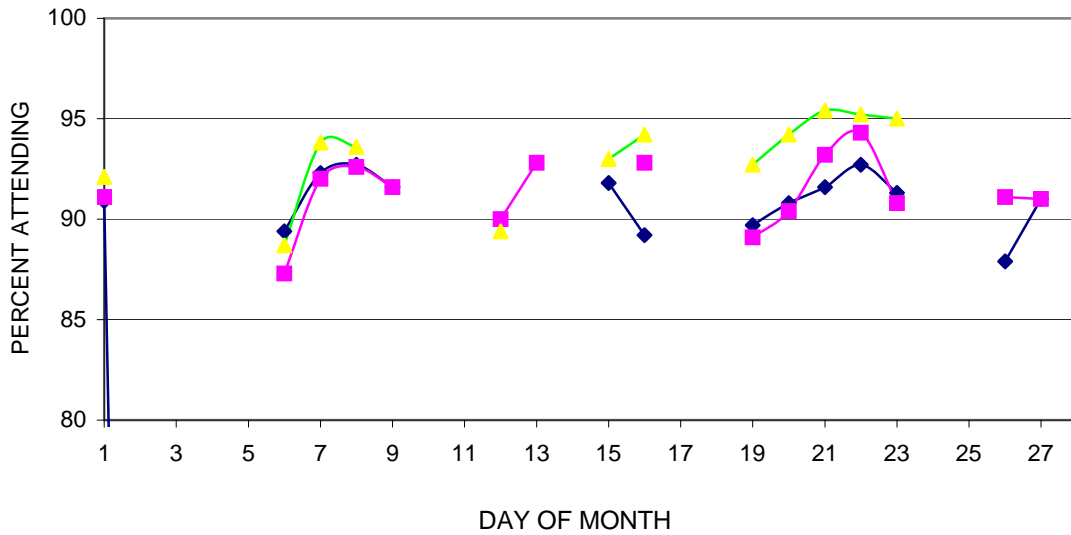
**GUAM SYNDROMIC DISEASE SURVEILLANCE  
 GMHA-ED PATIENT DIAGNOSES BY WEEK FOR CALENDAR YEAR 2007**



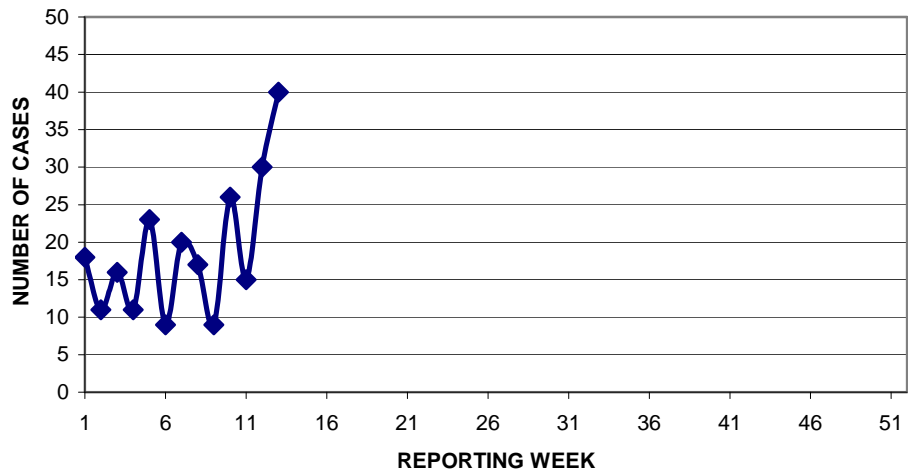
MEDICAL RECORDS DEPARTMENT  
 GUAM MEMORIAL HOSPITAL AUTHORITY  
**HOSPITAL INPATIENT DISCHARGES WITH DIAGNOSIS OF PNEUMONIA  
 BY WEEK DISCHARGED, 2007**



**GUAM PUBLIC SCHOOL ATTENDANCE BY REGION:  
 DAILY PERCENT ATTENDING , MARCH 2007**  
 Northern (blue), Central (pink), Southern (green)



**PNEUMONIA CASES SEEN IN GUAM MILITARY TREATMENT FACILITIES  
 BY WEEK REPORTED, 2007**



**GUAM COMMUNICABLE DISEASE REPORT**  
 REPORTS ENTERED FOR THE WEEK ENDING 3/31/2007  
 (REPORTS FROM ALL SOURCES, INCLUDING MILITARY CLINICS)

DISEASE	CASES
CHICKENPOX	4
CHLAMYDIA	4
CONJUNCTIVITIS	12
MENINGITIS, ASEPTIC	1
MRSA	9
SCARLET FEVER	2
SHIGELLOSIS	1
STREP SORE THROAT	23
SYPHILIS, CONGENITAL	1
SYPHILIS, SECONDARY	1

NOTE: An increase in the number of congenital syphilis cases over the past several years is of special concern because it suggests that some women are not receiving appropriate prenatal care. The problem is being investigated.

**GUAM INFLUENZA ACTIVITY LEVEL – No activity**