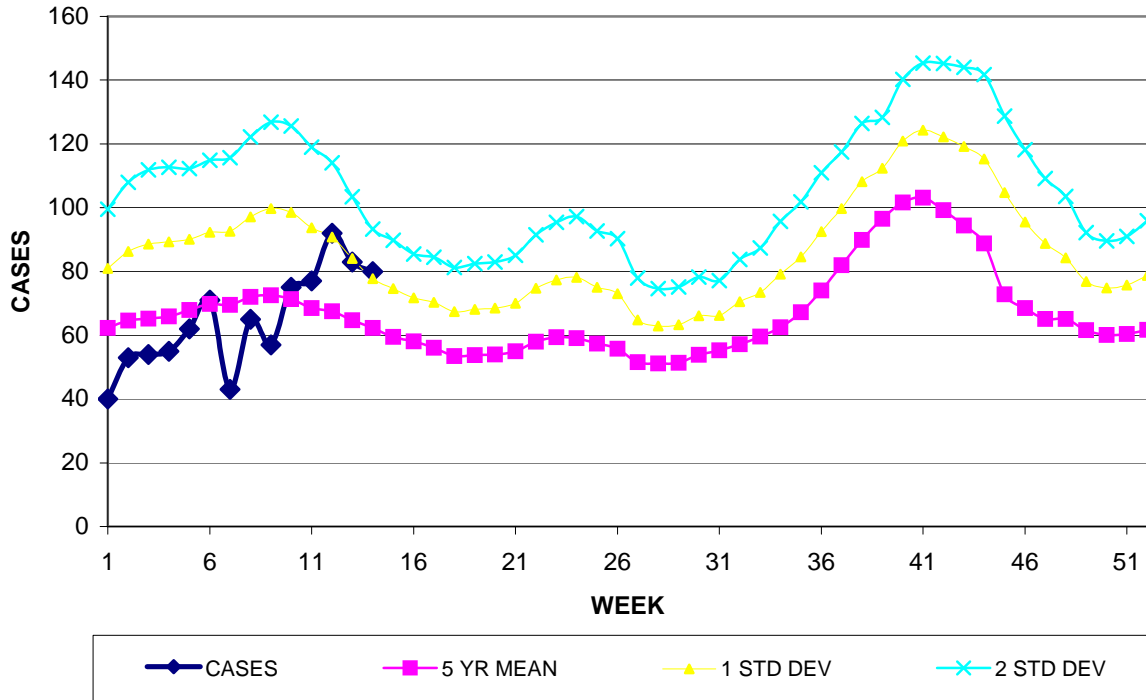


GUAM EPIDEMIOLOGY NEWSLETTER

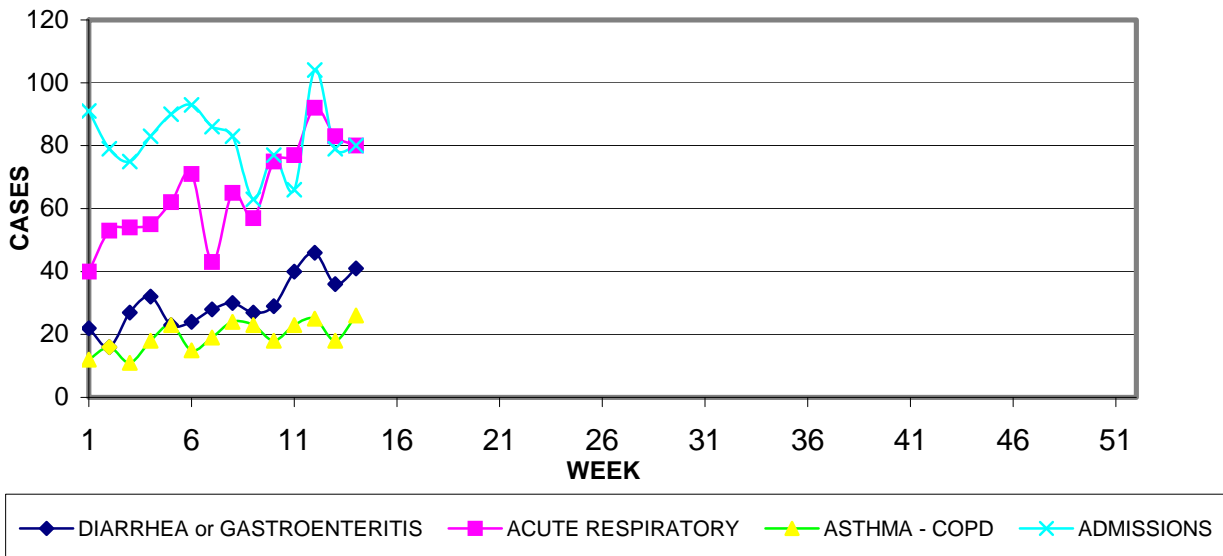
REPORT FOR WEEK ENDING: 4/7/2007 (Reporting week 2007-14)

GUAM REPORTS

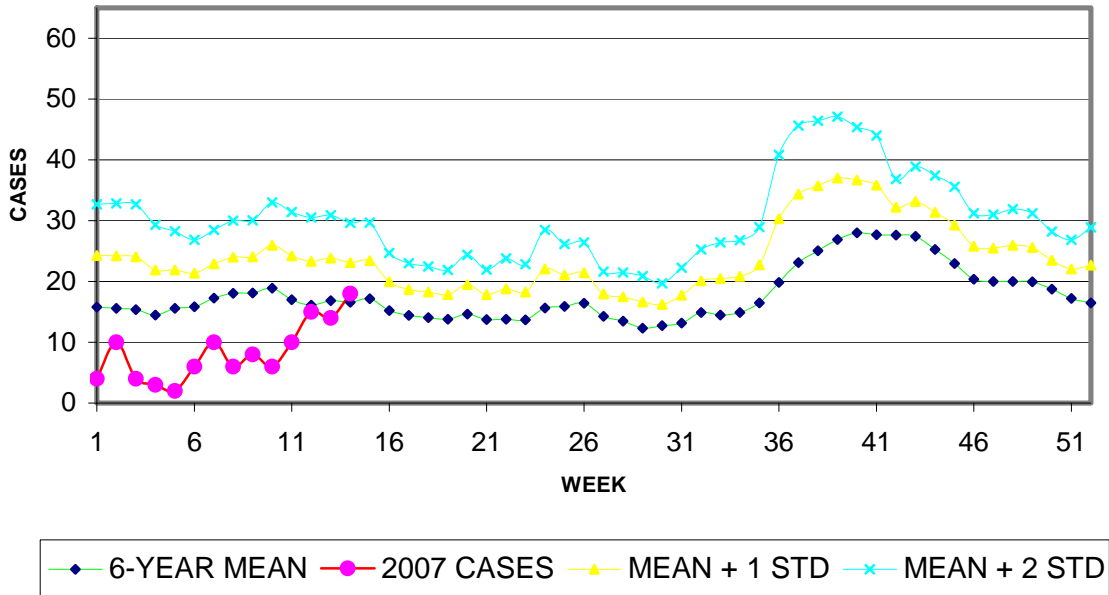
**GUAM ACUTE RESPIRATORY INFECTION SURVEILLANCE, 2007;
 NUMBER OF PATIENTS SEEN IN THE GMHA-ED BY WEEK SEEN**



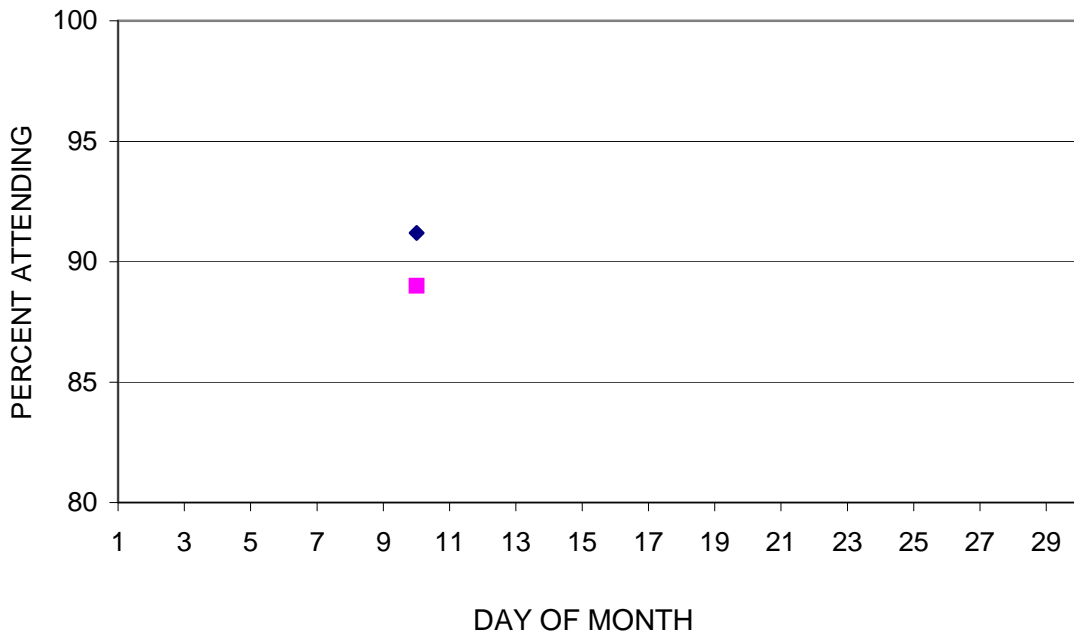
**GUAM SYNDROMIC DISEASE SURVEILLANCE
 GMHA-ED PATIENT DIAGNOSES BY WEEK FOR CALENDAR YEAR 2007**



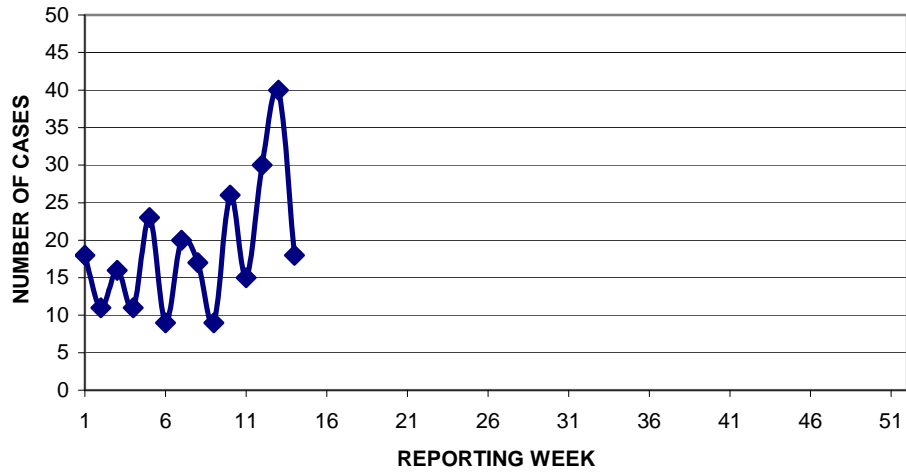
MEDICAL RECORDS DEPARTMENT
 GUAM MEMORIAL HOSPITAL AUTHORITY
**HOSPITAL INPATIENT DISCHARGES WITH DIAGNOSIS OF PNEUMONIA
 BY WEEK DISCHARGED, 2007**



**GUAM PUBLIC SCHOOL ATTENDANCE BY REGION:
 DAILY PERCENT ATTENDING , APRIL 2007**
 Northern (blue), Central (pink), Southern (green)



**PNEUMONIA CASES SEEN IN GUAM MILITARY TREATMENT FACILITIES
BY WEEK REPORTED, 2007**



GUAM COMMUNICABLE DISEASE REPORT
REPORTS ENTERED FOR THE WEEK ENDING 4/7/2007
(REPORTS FROM ALL SOURCES, INCLUDING MILITARY CLINICS)

DISEASE	CASES
C. DIFFICILE	1
CHICKENPOX	3
CHLAMYDIA	3
CONJUNCTIVITIS	1
INFLUENZA /FLU SYNDROME	1
MRSA	6
SCARLET FEVER	2
SHIGELLOSIS	1
STREP SORE THROAT	2

GUAM INFLUENZA ACTIVITY LEVEL – Isolated